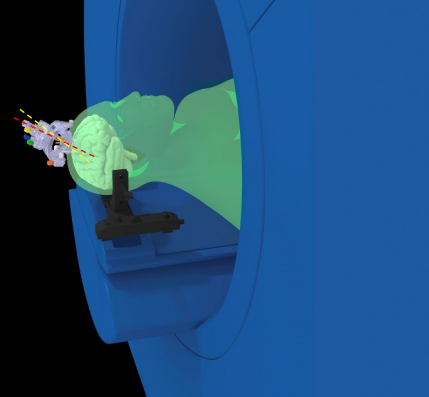




# CLEARPOINT<sup>®</sup> Neuro Navigation System

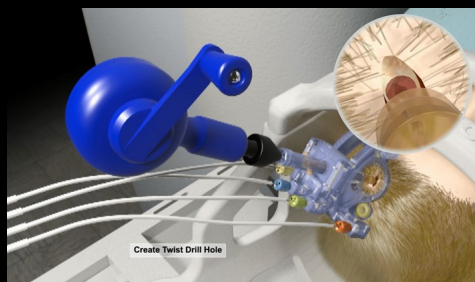


## Laser Ablation with ClearPoint<sup>®</sup> Neuro Navigation

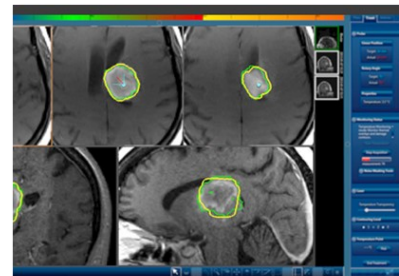


**Real-time MRI Visualization.** The MRI Interventions' ClearPoint platform allows for the accurate planning, targeting and placement of laser catheters to precise targets within the brain, while avoiding eloquent brain structures and large vessels.

**The ClearPoint MRI Neurological Draping System** provides a sterile barrier in any MRI scanner from start to finish reducing risks associated with patient transport<sup>1</sup>.



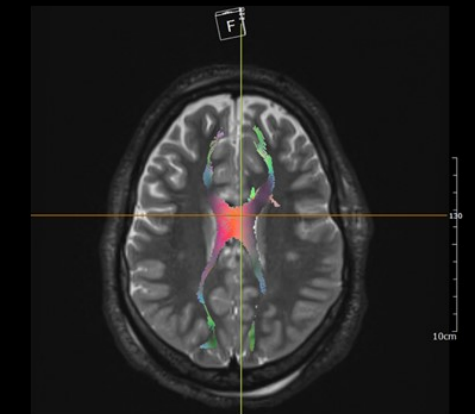
**Minimally Invasive.** The ClearPoint System enables minimally invasive, frameless procedures allowing for smaller incisions using a SMARTFrame<sup>®</sup> scalp mount base and SmartTwist<sup>®</sup> MRI compatible Hand Drill. Access can be achieved through a 3.4mm or 4.5mm twist drill entry.



**Accuracy from Entry Point to Target.** Precision is achieved through the SMARTFrame XG trajectory guide with exchangeable device guides. Four degrees of freedom, wide range of motion and short profile allow for sub-millimeter accuracy at target.

**Flexibility.** ClearPoint software and workstations utilize intra-procedural MR images and coordinates from the scanner allowing for planning, navigating and delivering multiple trajectories utilizing only one laser fiber.

**Streamlined Workflow.** The ClearPoint system eliminates the need to transport a patient from an Operating Room to the MRI. With the ClearPoint System, interventional neuro procedures can be done entirely within the MRI suite, resulting in a streamlined workflow, and the elimination of patient transport through the halls of the hospital.



### *Precise-Accurate-Frameless*

1. The MRI Neurosurgical Drape received 510(k) clearance intended "to provide a sterile, disposable covering of the MRI scanner during surgical procedures conducted under MRI imaging"