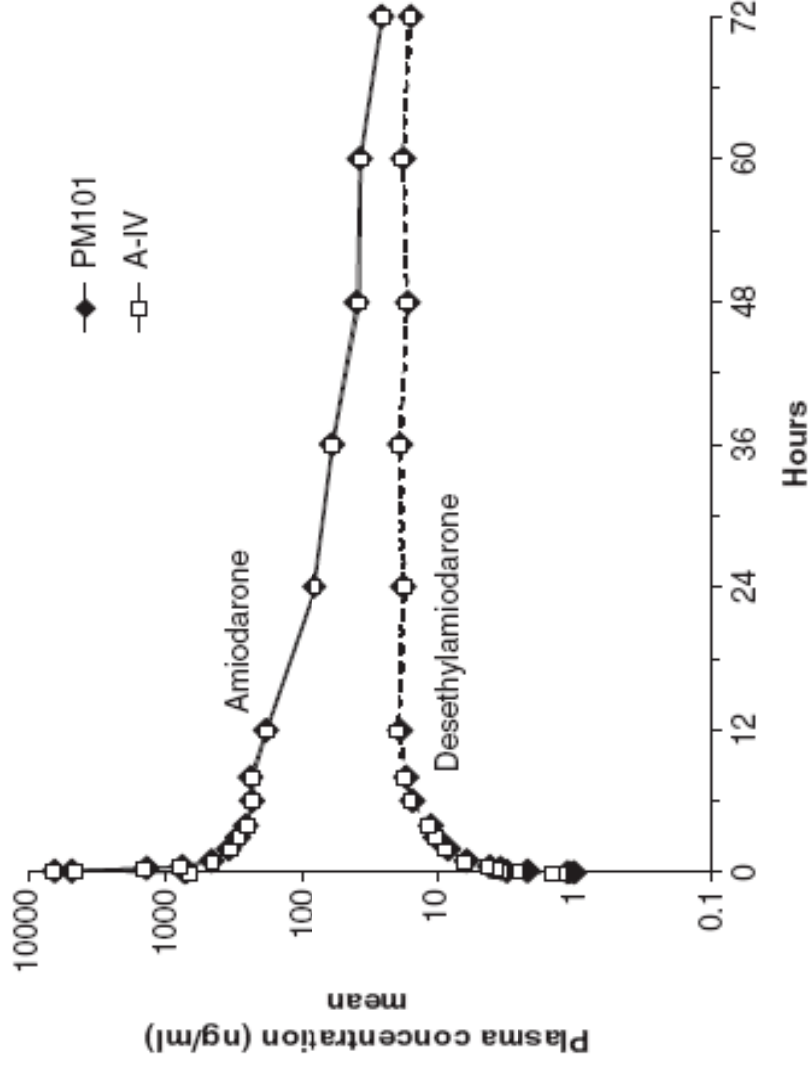


Amiodarone (PM101) IV Study

Product (50 mg/mL Amiodarone)	Captisol Dose
PM101	9.64 mg/kg, 67.5 mg/min, Total amount 675 mg
Cordarone	N/A

- double-blind
- double dummy
- single center
- two-period crossover
- single dose (150 mg)
- 10min infusion
- in healthy volunteers



DJ Cushing et al Journal of Clinical Pharmacology, 2009; 49:407-415