

 **air**connect global ku

Leading Connectivity Passenger Experience

Works with

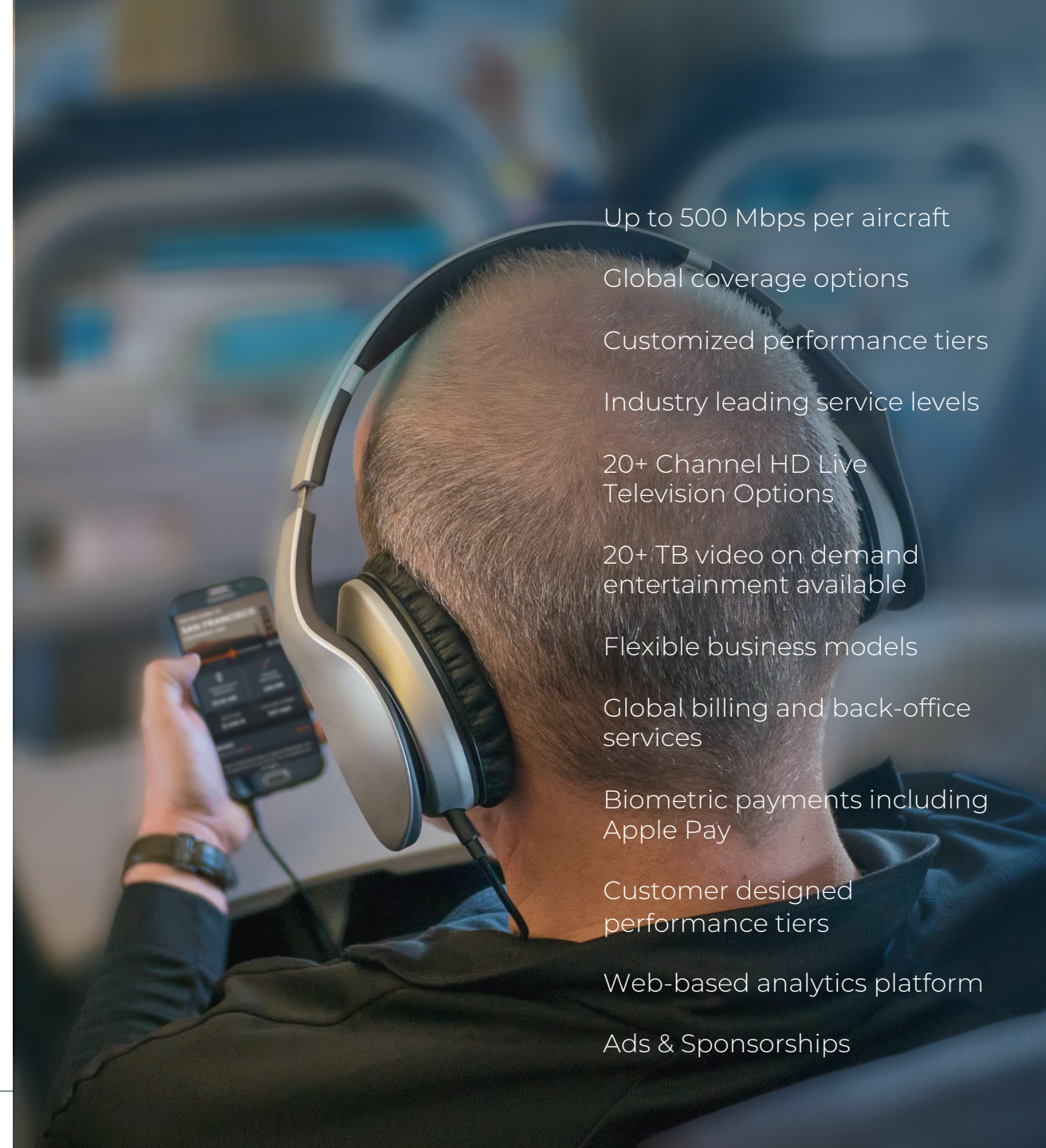
Airtime Portal and NRM



Satellite-based Connectivity and Entertainment experience

- High-speed internet and content streaming
- Consistent connected service with optimized network coverage
- Tiered payment configuration
- Ancillary revenue models
- Entertainment delivered as fully licensed and industry compliant
- Line-fit and retro-fit installation options
- No-touch software and content updates
- Flying onboard over 1,000+ aircraft

Direct to passenger's own device connectivity and entertainment inflight experience



Up to 500 Mbps per aircraft

Global coverage options

Customized performance tiers

Industry leading service levels

20+ Channel HD Live Television Options

20+ TB video on demand entertainment available

Flexible business models

Global billing and back-office services

Biometric payments including Apple Pay

Customer designed performance tiers

Web-based analytics platform

Ads & Sponsorships

- Affordable high-speed connectivity
- Customized networks for consistent service
- 1000+ aircraft proven tech
- Worldwide coverage
- Proven technology choice

Features for a seamless experience

- High performance and accuracy with reduced weight & components
- Leverages KU Band HTS (High Throughput Satellites) for Global and Consistent Coverage
- Gate-to-Gate connectivity maximizes passengers time connected
- No-Touch: Content and software updates delivered wirelessly via Satellite & 4G Cellular network
- Open architecture approach for future evolution
- Monetization of passenger through compelling Programmatic and Bespoke Advertising & Sponsorships

Internet

Cutting Edge Connectivity Network

Powered with high throughput satellites (HTS)

- Ku open network solution
- High performance global antenna
- Best in class network resource management
- High speed modems

Enhanced PaxEx

Accessing real-time engaging content

- Streaming class Internet access
- Stay connected to your personal cloud
- Private access for crew
- Flexible offerings to allow menu selection of services

Paid Access

Driving incremental revenue

- Flexible passenger packages, frequent flyer & class-based integration, complementary access
- Monetize passenger / crew interactions with engaging content
- Real-time credit / debit card transactions for reduced fraud risk
- Richer ad experiences with robust click through
- Maximize revenue through price sensitivity

Operational Efficiencies

Reducing costs and save time

- Automatic content updates
- Real-time data identifies issues fast
- Digital EFB access for aviation
- Separate WiFi SSIDs for Crew and Pilot

NRM

Customer controlled network management for an optimal passenger experience

- Granular control of bandwidth; full network control at an individual passenger level
- Usage intelligence on an application specific basis
- Agile satellite network, responsive to; capacity, user behavior, location and other business drivers
- Integrated video optimization for premium streaming experience
- Dynamic congestion management dramatically improves end-user performance during peak usage
- Custom application and traffic signatures are used to significantly improve even encrypted application performance

[Find out more →](#)

Airtime Portal

Award-winning user interface with an extensive, configurable feature set

Key features

- Live Television
- Movies & TV Series
- Music & Podcasts
- Newspapers & Magazines
- Games
- WiFi
- Destination Content
- Flight Map
- Messaging



[Find out more →](#)

Product features overview



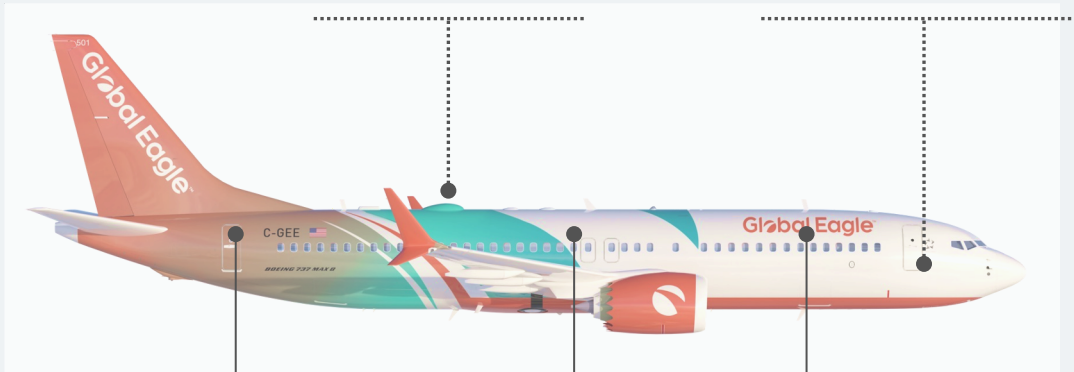
GSAA



MDU

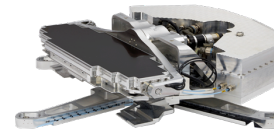


SMU



CWLNU

Specifications



Airconnect Antenna (GSAA)

- Performance and accuracy
- Higher efficiency
- Reduced weight, component count
- Future proof – LEO compatible



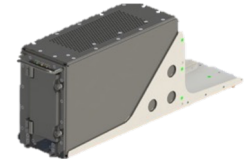
Intelligent Server/Router (SMU)

- Dual Core i7, 32 GB RAM
- Built-in dual 4G LTE modem
- Up to 12TB for media storage, containers for tech & flight ops



Cabin Wireless LAN (CWLNU)

- 802.11a/b/g/n/ac standards
- Simultaneous 5 GHz/2.4 GHz radios for streaming and intense apps
- Leverages modern smartphone and laptop capabilities



Modem Manager (MODMAN/MDU)

- 500 Mbps throughput
- Industrial Modem board design
- ARINC 791 Compliant
- Available mini-server

Want to know more, talk to a member of our team

Email:
customer@globaleagle.com

Tel: +1 (310) 437-6000