



DATA-CENTRIC INNOVATION SUMMIT

DRIVING NETWORK TRANSFORMATION

DAN RODRIGUEZ

VICE PRESIDENT DATA CENTER GROUP
GENERAL MANAGER COMMUNICATIONS INFRASTRUCTURE DIVISION

TRANSFORMING THE NETWORK



DATA IS EXPLODING – REQUIRES **HIGHER CAPACITY** AND **LOWER LATENCY**

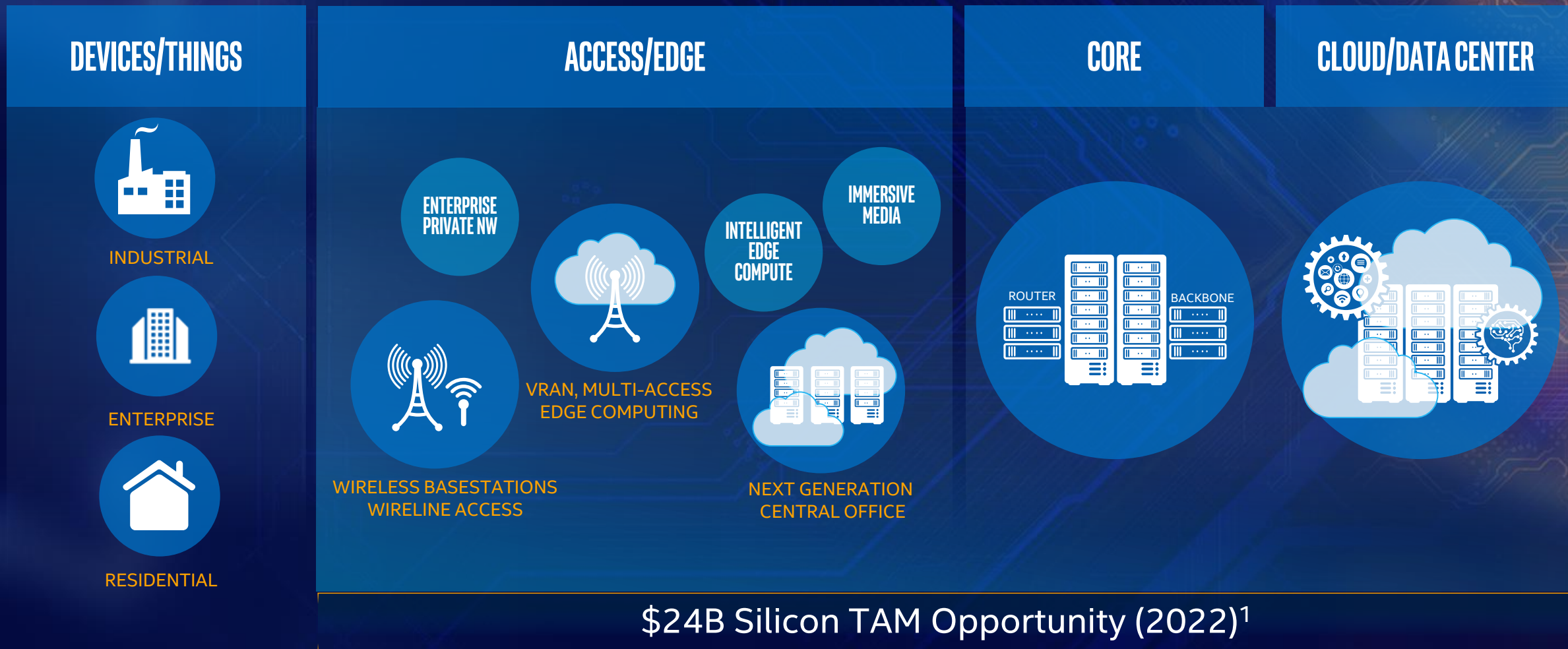


NETWORK NEEDS TO BE **SMARTER – FLEXIBLE, CLOUD-READY** AND **DISTRIBUTED**



INTEL IS **WINNING – PARTNERING** WITH OUR CUSTOMERS FOR **TRANSFORMATION**

NETWORK INFRASTRUCTURE OPPORTUNITY



INTEL NETWORK TRANSFORMATION STRATEGY

WORKLOAD CONVERGENCE

Intel® Architecture
Performance + Scale



APPLICATION



CONTROL



PACKET



SIGNAL



NFV / SDN

Cloud Ready Networks

VNFs

MANO

NFVi

IA

OS
VMM

Optimized
Ingredients

CUSTOMER & INDUSTRY COLLABORATION

Win Together



NOKIA

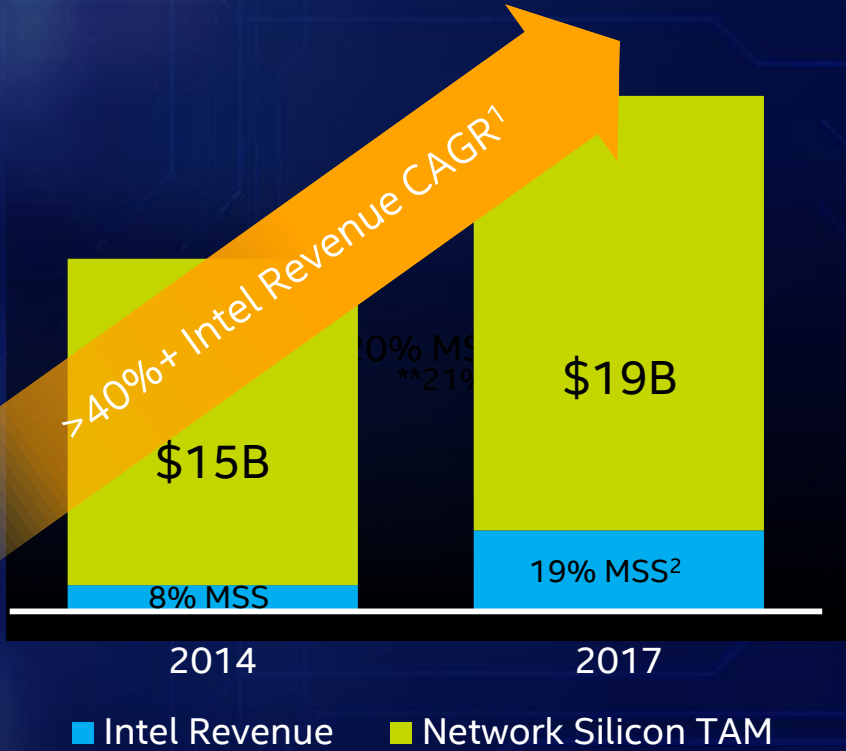


Telefonica

verizon



GROWING SHARE IN NETWORKING



INTEL COMMS SERVICE PROVIDER REVENUE

2014 - 2017 CAGR	1H'18 (VS 1H'17)
↑ 22%	↑ 31%
~14% of DCG Revenue ³	~21% of DCG Revenue ⁴

Intel Network Silicon Revenue Grew **5X** Market CAGR

¹ >35% CAGR without PSG revenue
² Intel MSS for 2017 would be 15% without PSG revenue

³ Percentage of DCG Revenue in 2014
⁴ Percentage of DCG Revenue 1H 2018



NETWORK VIRTUALIZATION IS HAPPENING NOW

NETWORK TAM CAGR (2018-2022)

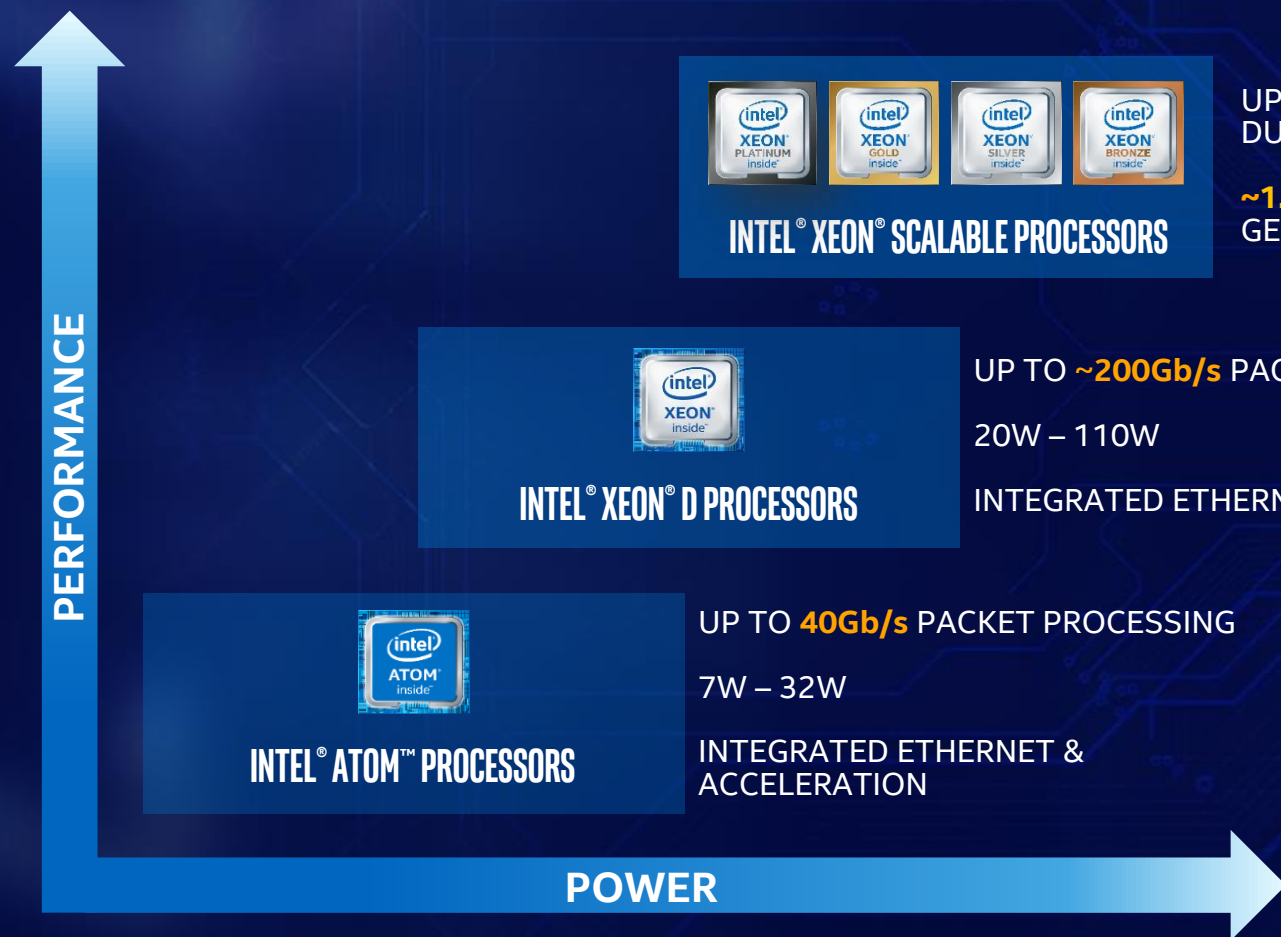
↑ 4%¹

Physical
Network Appliance

↑ 16%¹

Virtualized
Network Server

INNOVATE & INTEGRATE NETWORKING TECHNOLOGIES



INTEL® XEON® SCALABLE PROCESSORS

UP TO **~600Gb/s** PACKET PROCESSING ON A DUAL SOCKET PLATFORM

~1.7X IMPROVEMENT COMPARED TO PRIOR GENERATION



INTEL® XEON® D PROCESSORS

UP TO **~200Gb/s** PACKET PROCESSING

20W – 110W

INTEGRATED ETHERNET & ACCELERATION



INTEL® ATOM™ PROCESSORS

UP TO **40Gb/s** PACKET PROCESSING

7W – 32W

INTEGRATED ETHERNET & ACCELERATION

PLATFORM TECHNOLOGIES

- Intel® Silicon Photonics
- Intel® Ethernet Controller
- Intel® OPTANE™ DC SOLID STATE DRIVE
- Intel® OPTANE™ DC PERSISTENT MEMORY
- Intel® STRATIX™ 10 inside
- Intel® FPGA
- Intel® QuickAssist Technology

ENABLING NETWORK TRANSFORMATION

INVEST

OPEN SOURCE AND STANDARDS



ENABLING NETWORK TRANSFORMATION

INVEST

OPEN SOURCE AND STANDARDS



INDUSTRY COLLABORATION

INTEL® NETWORK BUILDERS

300+

Members

30+

Comms SPs

82+

POCs/Trials/Deployments
Based on Member Solutions

126+

Network Builder
University Program
Members

38+

Network Edge
Ecosystem Program
Members

ENABLING NETWORK TRANSFORMATION

INVEST

OPEN SOURCE AND STANDARDS



INDUSTRY COLLABORATION

INTEL® NETWORK BUILDERS

300+

Members

30+

Comms SPs

82+

POCs/Trials/Deployments
Based on Member Solutions

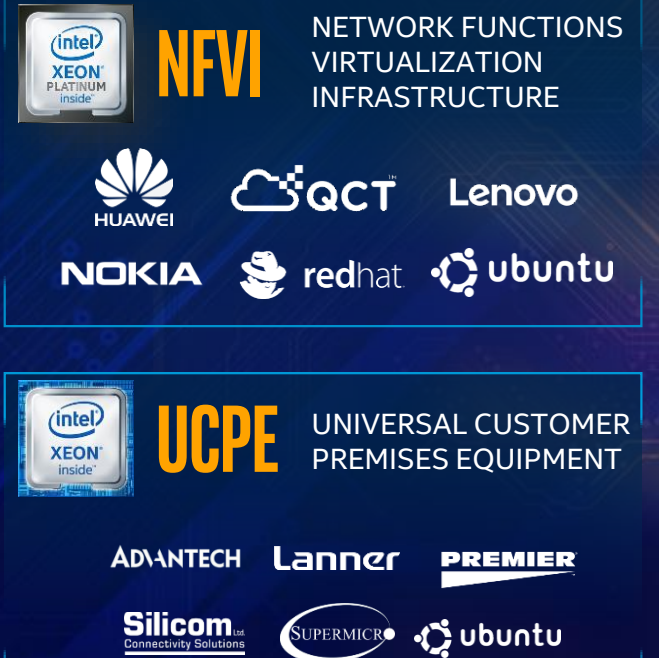
126+

Network Builder
University Program
Members

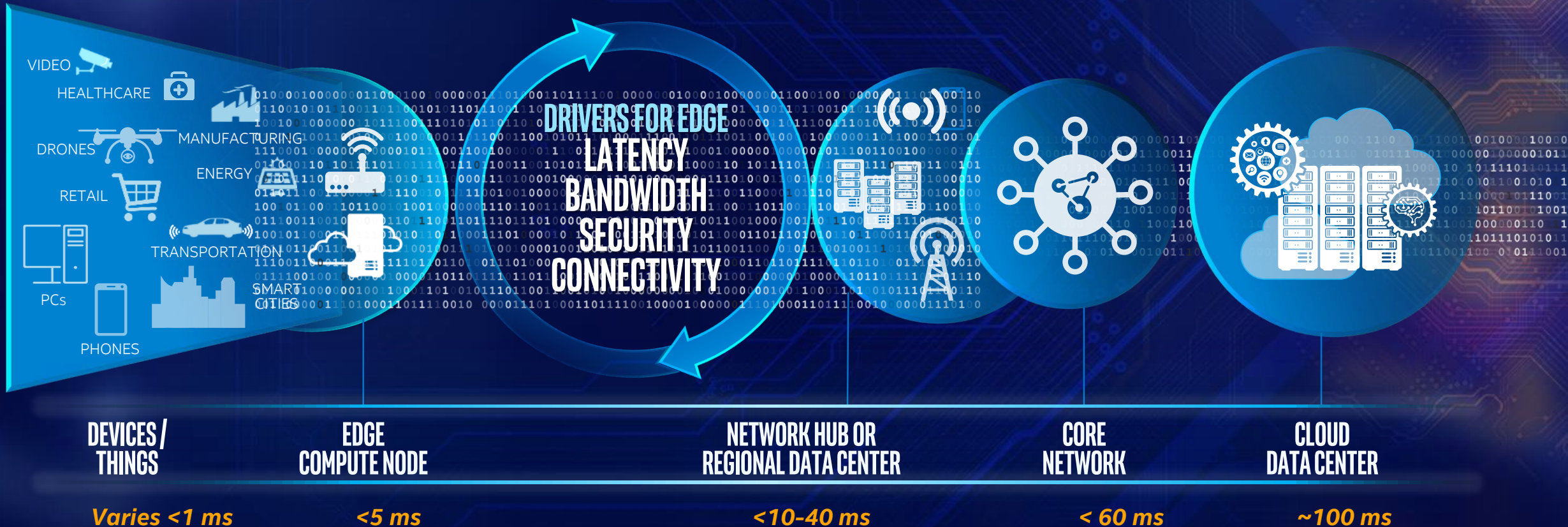
38+

Network Edge
Ecosystem Program
Members

intel select solution

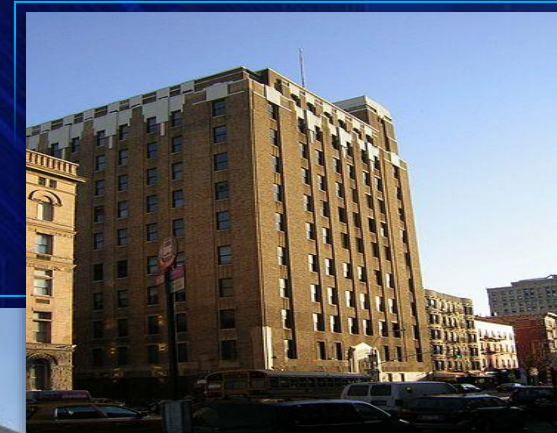
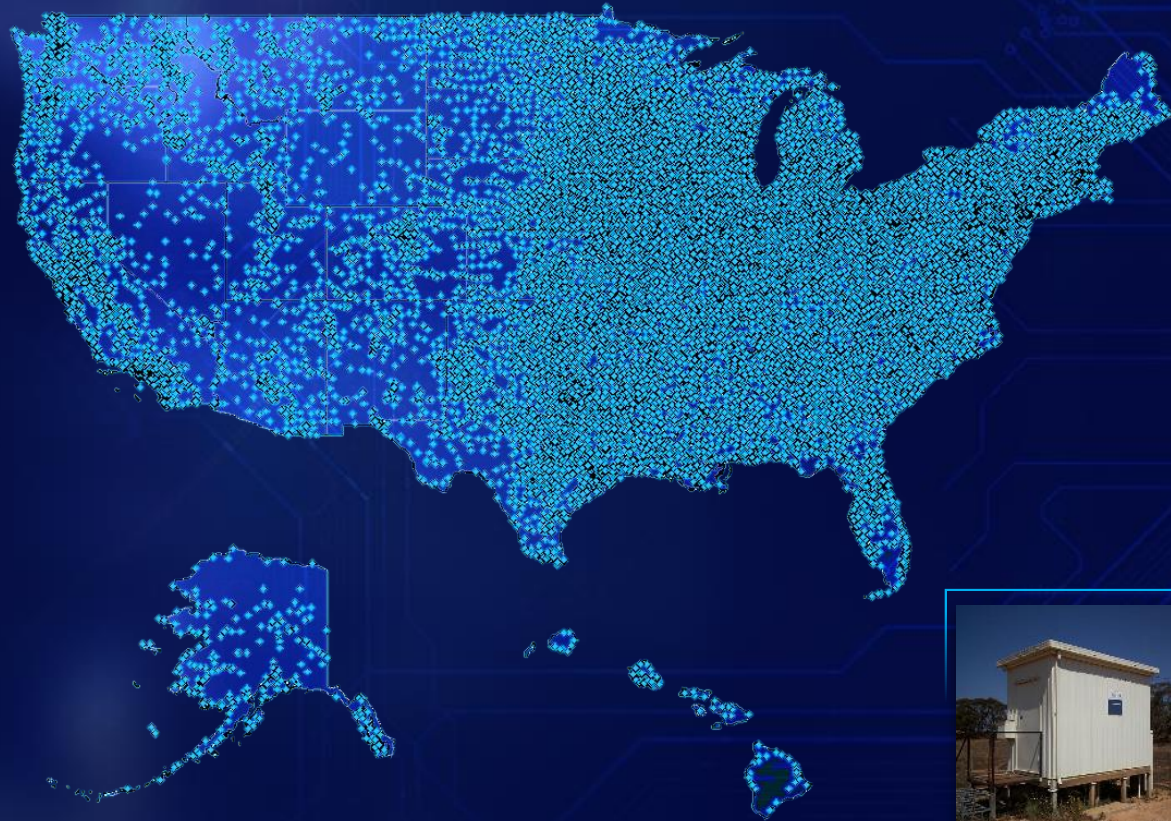


DATA DRIVES EDGE COMPUTING



GROWTH OPPORTUNITY AT THE EDGE

TODAY'S CENTRAL OFFICES (COs) = LEGACY EQUIPMENT



US: ~20,000 COs¹
China: ~70,000 COs¹

Transformation of the Central Office at the Edge

5G ACCELERATES NETWORK TRANSFORMATION

NEXT GENERATION OF WIRELESS NETWORKS

HIGHER SPEEDS, GREATER CAPACITY AND LOWER LATENCY

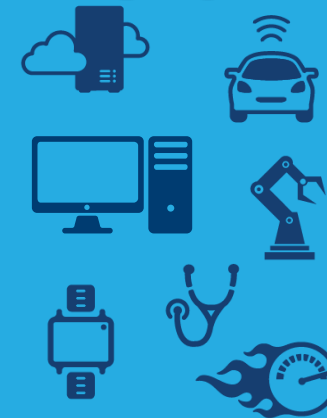
BILLIONS OF CONNECTED DEVICES AND THINGS

ENHANCED MOBILE
BROADBAND

ULTRA-RELIABLE
AND LOW LATENCY



MASSIVE MACHINE-
TO-MACHINE



2G

CELLULAR COMMS



3G

DATA AND THE
APP REVOLUTION



4G

FASTER DATA &
MORE USERS



Agility, Scalability and Intelligence Throughout the Network

NETWORK TRANSFORMATION IS FOUNDATIONAL TO 5G



Intel is **Leading 5G**

SUMMARY

NETWORK IS A **\$24B** OPPORTUNITY

NETWORK TRANSFORMATION IS **HAPPENING NOW**

EDGE & 5G ARE **ACCELERANTS** TO NETWORK TRANSFORMATION THAT IS UNDERWAY

INTEL IS **WINNING** WITH TECHNOLOGIES AND INDUSTRY PARTNERSHIPS

DISCLOSURES

Statements in this presentation that refer to business outlook, future plans and expectations are forward-looking statements that involve a number of risks and uncertainties. Words such as "anticipates," "expects," "intends," "goals," "plans," "believes," "seeks," "estimates," "continues," "may," "will," "would," "should," "could," and variations of such words and similar expressions are intended to identify such forward-looking statements. Statements that refer to or are based on projections, uncertain events or assumptions also identify forward-looking statements. Such statements are based on management's current expectations, unless an earlier date is indicated, and involve many risks and uncertainties that could cause actual results to differ materially from those expressed or implied in these forward-looking statements. Important factors that could cause actual results to differ materially from the company's expectations are set forth in Intel's earnings release dated July 26, 2018, which is included as an exhibit to Intel's Form 8-K furnished to the SEC on such date. Additional information regarding these and other factors that could affect Intel's results is included in Intel's SEC filings, including the company's most recent reports on Forms 10-K and 10-Q. Copies of Intel's Form 10-K, 10-Q and 8-K reports may be obtained by visiting our Investor Relations website at www.intc.com or the SEC's website at www.sec.gov.

All information in this presentation reflects management's views as of the date of this presentation, unless an earlier date is indicated. Intel does not undertake, and expressly disclaims any duty, to update any statement made in this presentation, whether as a result of new information, new developments or otherwise, except to the extent that disclosure may be required by law.

