

41 MOORES ROAD



187,653 RSF AVAILABLE (DIVISIBLE TO 62,551 RSF)



Three
Stories



4/1,000
Parking Ratio



LEED &
Energy Star Certified



Full-service
Cafeteria



Fitness
Center



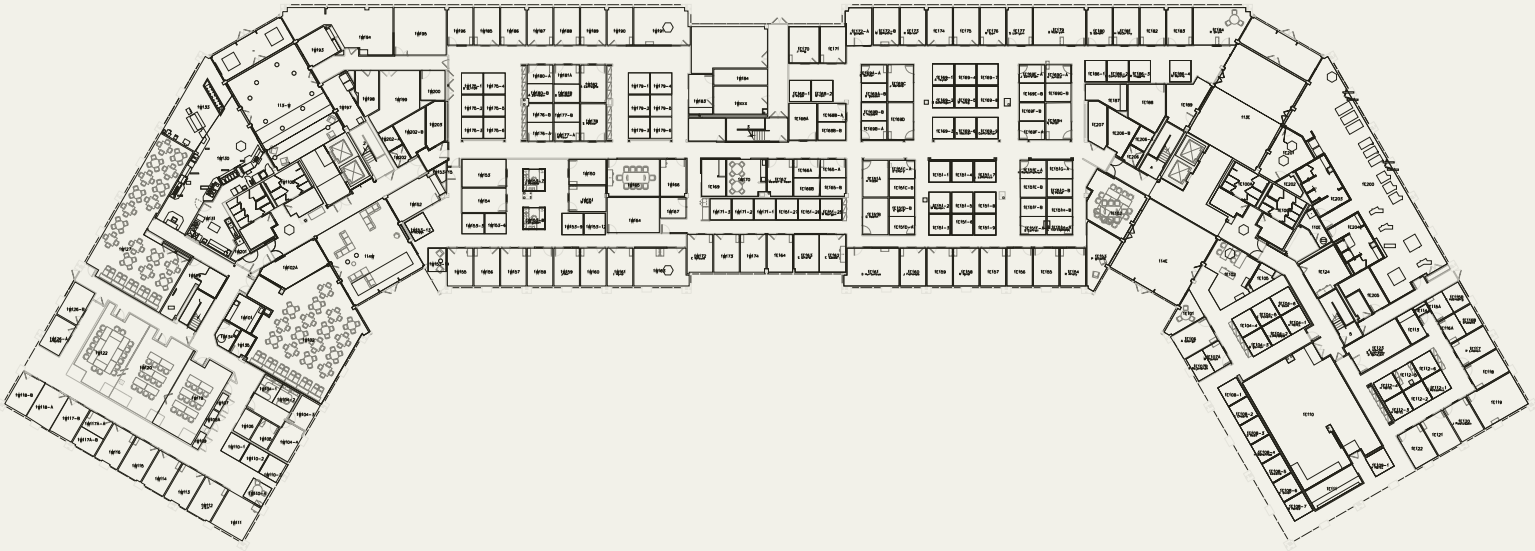
Conference
Facilities



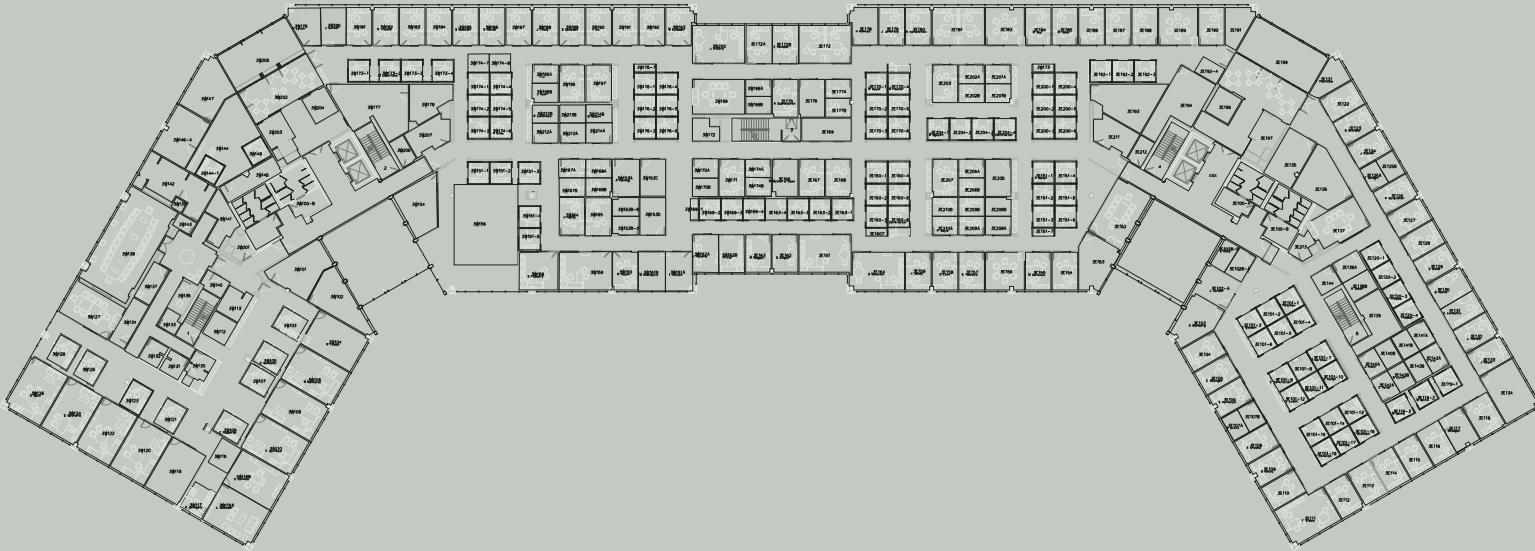
Monument &
Building Signage

NEWMARK

FLOOR ONE



FLOOR THREE



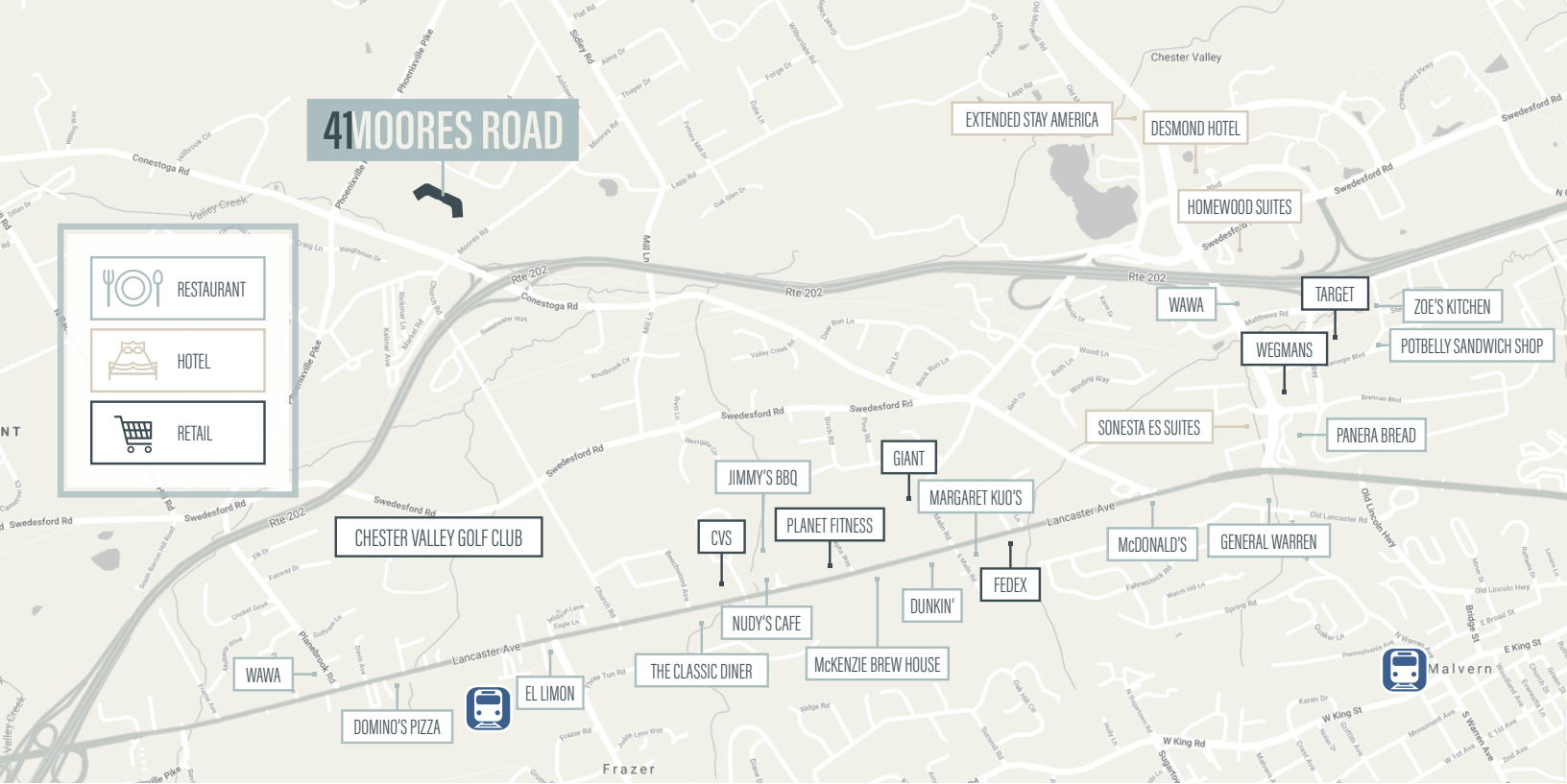
FLOOR TWO



PLANNED UPGRADES

Planned capital improvements to the lobby, restrooms, and common areas. New additions include a full service cafe/Fooda/Grab 'n' Go, fitness center and conference center.





LOCATION HIGHLIGHTS

- Located 0.5 miles to Route 202
- Proximity to I-76, I-276 and the Malvern Regional Rail Station and the Paoli Amtrak/Regional Rail Station
- Located within East Whiteland Township
- No Gross Receipts Tax

FOR MORE INFORMATION

PATRICK NOWLAN

Managing Director
t 610-755-6965
patrick.nowlan@nmrk.com

880 East Swedesford Road, Suite 100
Wayne, PA 19087
t 610-265-0600
nmrk.com

Licensed in Pennsylvania as Newmark Real Estate

NEWMARK

The information contained herein has been obtained from sources deemed reliable but has not been verified and no guarantee, warranty or representation, either express or implied, is made with respect to such information. Terms of sale or lease and availability are subject to change or withdrawal without notice.