



## CAP TABLE

SHARES OUTSTANDING, BASIC+ PRE-FUNDED WARRANTS	84.2M	WARRANTS, OPTIONS DSUs & RSUs	22.6M	SHARES OUTSTANDING FULLY DILUTED	106.8M	DEBT	NIL
--	-------	-------------------------------	-------	----------------------------------	--------	------	-----

## INVESTMENT HIGHLIGHTS: THE FUTURE OF FOOD SECURITY

### BRAZIL: FOOD SECURITY

**Critical Mineral Exposure:** Potash is essential to food security and recognized as a critical mineral

**Supply Chain Security:** ~52% of global potash comes from conflict-prone or sanctioned nations

**Strategic Asset:** Unique access to Brazil's \$169B agriculture economy

**Location:** Brazil is the world's second-largest consumer of potash after China — and the largest importer globally. With demand growing at four times the global average, Brazil remains the most significant and fastest-growing potash import market.

### THE AUTAZES PROJECT: DE-RISKED AND CONSTRUCTION-READY

**Shovel Ready:** Key approvals and permits secured

**Economics:** Brazil Potash will be the lowest cost-producer of potash to Brazilian farmers due to strategic in-country location

**Amazonas Potash Basin:** Autazes Project is perfectly located for supply chain security

**Infrastructure Advantage:** Proven logistics advantage with barge access via Madeira River for potash transportation

## BRAZIL POTASH GROWTH CATALYSTS



Additional BOOT Financing agreements for Infrastructure



Completion of FEED Engineering



Anchor Equity for Construction



**Financing Package:** Export Credit Agencies, Development Banks, Multilateral Agencies, Credit Funds

**ALREADY LICENSED FOR CONSTRUCTION**

## BRAZIL: CRITICAL FOR GLOBAL FOOD SECURITY

EXTRACT | NOURISH | FLOURISH

**Brazil's abundant land, freshwater and warm year round climate can boost global food security**

Brazil grows ~2.5x crops per year vs. 1x for most countries

~ 25% of Brazilian GDP generated by the agriculture sector<sup>1</sup>

Domestic, in-market source of potash secures agricultural output & mitigates risk of global food and supply shocks

USD 169<sup>6</sup> Brazil agricultural exports in 2025<sup>2</sup>

Brazil produces <1% of global potash supply while also being the largest importer (1 of 3 main fertilizers to grow food)

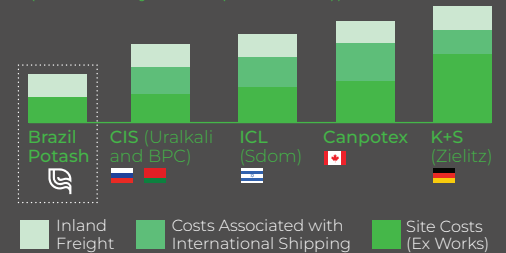
~22% of global import demand for Potash comes from Brazil

Brazil is >95% reliant on imports for supply of Potash

Brazil's Potash consumption CAGR 2023E-27E of 6.8% vs. 5.1% global

Brazil Potash will be the lowest-cost producer to Brazil due to its in-country location

**Comparison of CFR costs to Mato Grosso (Brasnorte), Brazil (in nominal \$/ton (2024 - major competitors<sup>3,4</sup>))**



Recent geopolitical events have highlighted Brazil's need for Potash supply security and **Brazil Potash Corp can be a key part of the Solution**

Sources: Company, CRU Group, FAO, Brazilian Secretariat of Foreign Trade, USDA. (1) According to

USDA Foreign Agricultural Service, "Brazilian Economic and Agricultural Overview"; (2) SECEX; (3) Represents comparison of delivered costs from Autazes and major incumbent exporters to Rondonopolis, Mato Grosso in nominal terms (2024); (4) Costs associated with shipping include cost to FOB, ocean freight costs, port charges, ad hoc handling expenses; (6) Inland freight to Brasnorte is reflective of either freight cost Paranaguá to Brasnorte (for imported product), or the inland road transportation from the Autazes Project to Brasnorte

# AUTAZES PROJECT: A DE-RISKED, SHOVEL-READY ASSET

The Autazes Project is a shovel-ready, large-scale potash development in Brazil's Tier-1 Amazonas Basin—potentially one of the world's largest potash regions. Permitted and in early construction, it offers a long-life resource with a strategic location near key farmland, enabling a cost advantage over imports. Led by the former CEO of Nutrien and Viterra bringing world-class expertise, the project targets over 17% of Brazil's potash market.

- 2.4M short-tons per annum (stpa)**  
Anticipated potash (KCl) production
- 23 years production with substantial upside**  
Estimated reserve project life
- Significant Brazilian government support**  
Project of National Importance & critical mineral
- Permitted for construction**  
~4 year mine buildout
- Lowest est. all-in-in-country delivered cost**  
Irreplicable logistics advantage

- Significant development Investment**  
Over ~\$295 million invested in drilling, technical and environmental/social studies + consultations
- Simplified logistics for development**  
Module pre-fabrication in Manaus - active intl. manufacturing, free trade zone - transported to site via the Amazon River
- Franco-Nevada: Strategic investment validation**  
\$10M equity investment at IPO & royalty option
- Potential Outsourced: Power Line port, steam plant, backup power**

## ILLUSTRATIVE NAMEPLATE PROJECTED FINANCIAL HIGHLIGHTS

- US\$~1 billion<sup>1</sup> EBITDA**
- ~75% EBITDA margin**  
over life of project
- US\$ ~2.5 billion<sup>2</sup> Pre-operating CAPEX**

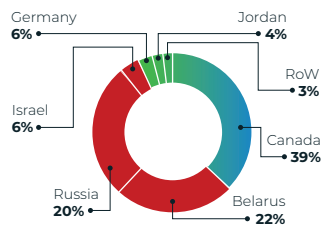
## GEOGRAPHICAL FOOTPRINT

- Fastest consumption growth occurring in Northern states<sup>3</sup>**
- Currently over 70% of MOP imports arrive in Southern states<sup>3</sup>**

Sources: Federation of Industries of the State of São Paulo & Institute for International Trade Negotiations – Outlook Brazil 2022 Agribusiness Projections; Technical Report (Update of the Autazes Potash Project – Pre-Feasibility Study) prepared by ERCOSPLAN Ingenieuresgesellschaft, Geotechnik und Bergbau mbH ("ERCOSPLAN"), dated October 14, 2022; Company materials; Notes: (1) Based on projected run-rate production from project years 4 to 20; (2) Post-tax Capital Expenditure; (3) Based on information from the Federation of Industries of the State of São Paulo & Institute for International Trade Negotiations – Outlook Brazil 2022 Agribusiness Projections

## POTASH: GROWING MKT, CONCENTRATED SUPPLY

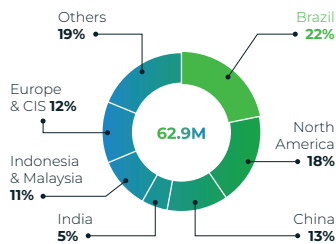
### Global Potash Supply Profile (% of Global KCl Exports)



~48% of world's current potash supply in conflict areas

- Brazil produces ~1% of global potash supply
- ~80% of supply is highly concentrated between 3 nations
- Russia & Belarus account for largest portion of exports, globally

### Global Demand: Imports by Country (2021)



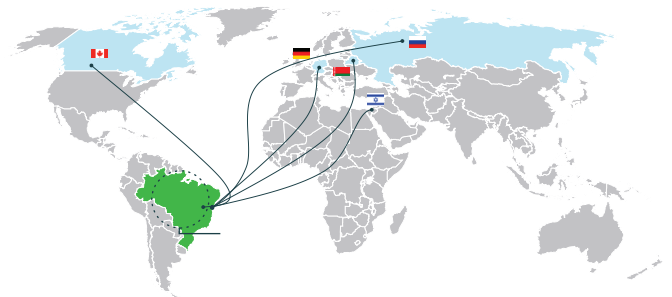
Brazil is the largest importer of potash in the world

- Brazil is responsible for majority of south American potash consumption
- >95% reliant on imports for supply of MOP - why Autazes is 1 of 8 Brazilian National Projects of importance/Critical Mineral

Sources: CRU Group – Potassium Chloride Market Outlook November 2022, ANDA, Company materials; Notes: (1) Based on information from CRU Group – Potassium Chloride Market Outlook November 2022

## ENABLING SHORTER SUPPLY CHAIN & SECURITY

A shorter supply chain means shorter delivery times  
The total transit time when purchased from Brazil Potash could be 20x shorter



Canpotex	
Purchase Order to Load Vessel	2.5 Days
Sea Freight to Brazil	47 Days
Demurrage Days	~55 Days
Inland Freight to Rondonopolis	2.0 Days
Total Canpotex	~107 Days

BPC	
Inland Freight to Rondonopolis	2.5 Days
Total Transit Time	2.5 Days

Δ ~104 Days from Purchase

## EXPERIENCED MANAGEMENT TEAM & SOPHISTICATED SHAREHOLDER BASE

### SELECT EXECUTIVE TEAM MEMBERS



- Mayo Schmidt**, Executive Chairman
- Former Chairman and CEO of Nutrien Ltd., world's largest fertilizer manufacturer
  - Former CEO of Hydro One and Viterra
  - Fortune 100 executive positions including General Mills and ConAgra



- Matt Simpson**, CEO & Director
- Former GM Rio Tinto's Iron Ore Company of Canada managing >\$300M/y spend, operations, maintenance & technical staff moving >70M stpa
  - Worked for Hatch, designing & constructing global metallurgical refineries

Source: Brazil Potash Not a named executive officer

Management Team With Previous Experience Across Major Commodity Companies:



- Sergio Leitte**, President
- 40+ years of executive experience delivering large-scale steel plants, mining and infrastructure projects
  - Former CEO of Companhia Siderúrgica do Pecém, Operational Director for Vale S.A. and CEO of Vale Oman



- Raphael Bloise**, Project Director
- Recognized as of the most experience mining professionals in South America with over 40 years experience.
  - Led the construction of multiple mining projects in Brazil with investments totalling over US\$15 billion



- Lúcio Rabello**, Head of Environmental & Licensing
- 20+ years experience licensing in Amazon State
  - Former president of the Amazonas State Environmental agency



- Marcos Pedrini**, VP Marketing
- 35+ years experience selling and arranging delivery of potash in Brazil
  - Former GM Agriculture Sales at Vale

DISCLAIMER

This factsheet is provided for informational purposes only and does not constitute an offer to sell or a solicitation of an offer to buy any securities of Brazil Potash Corp. (the "Company"). This is not an investment recommendation. This factsheet should be read in conjunction with the Company's filings with the U.S. Securities and Exchange Commission ("SEC").

This factsheet contains forward-looking statements, including projections regarding future production, financial performance, costs, market conditions, and development timelines. These statements are based on current expectations and assumptions and are subject to risks and uncertainties that could cause actual results to differ materially, including the need for significant capital resources, the cost, timing, and results of development and construction activities; the Company's ability to obtain, maintain, and renew permits and licenses; results of indigenous community consultations; fluctuations in potash prices and currency exchange rates; changes in governmental and regulatory policies; and geopolitical and economic conditions in Brazil and internationally. Readers should not rely upon forward-looking statements as predictions of future events. The Company undertakes no obligation to update any forward-looking statement, except as required by law. For a complete discussion of risk factors, please refer to the Company's SEC filings. All mineral resource and reserve estimates are prepared in accordance with SEC Mining Disclosure Rules and Regulation S-K 1300. Investors should not assume that mineral deposits classified as resources will be converted into reserves. EBITDA is a non-GAAP measure and should not be considered as an alternative to any measure derived in accordance with U.S. GAAP. Market and industry data are derived from third-party sources believed to be reliable but have not been independently verified. All information is as of the date shown and is subject to change without notice.

INVESTOR CONTACT:  
info@brazilpotash.com

www.brazilpotash.com

