

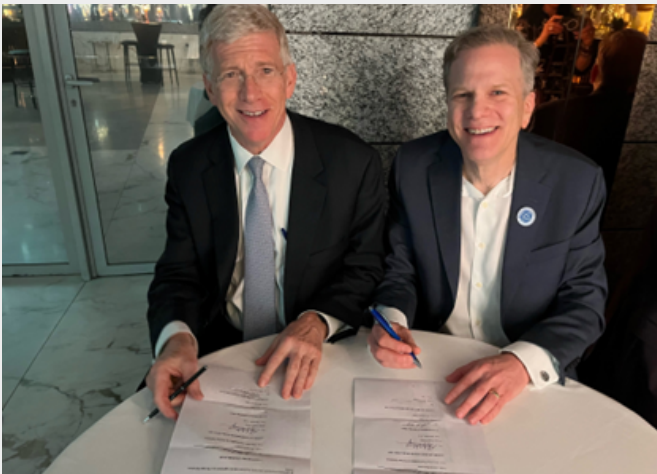
# SPECIAL EDITION:

Lightbridge



COP28  
UAE

## Nuclear News and Updates from Lightbridge



**Signing Ceremony on the sidelines of COP28**  
From left to right: Daniel B. Poneman, Centrus President & CEO, Seth Grae, President & CEO of Lightbridge

### Lightbridge & Centrus Energy to Conduct FEED Study for a new Lightbridge Pilot Fuel Fabrication Facility (LPFFF)

“This agreement with Centrus marks a landmark moment for Lightbridge as we take concrete steps towards establishing a pilot-scale facility to manufacture Lightbridge Fuel. This facility will be instrumental in paving the way for cleaner, safer, and more efficient nuclear energy by bringing HALEU to existing reactors as well as to new reactors, large and small,” said **Lightbridge CEO Seth Grae**.

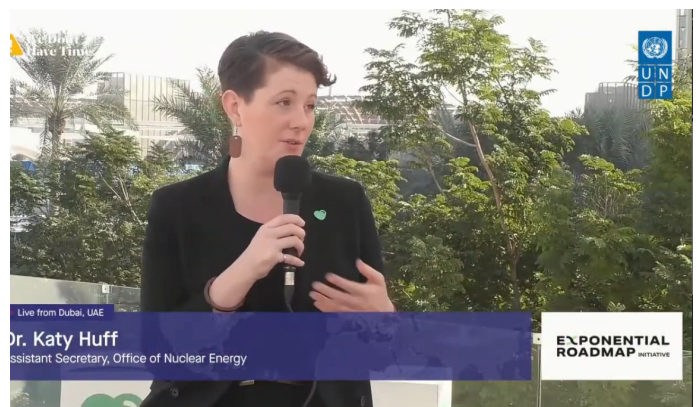
**[Read the Announcement](#)**

**[Read NEI Article on the Announcement](#)**

**Dr. Kathryn Huff, U.S. Assistant Secretary of Energy for Nuclear Energy:** “It’s an incredible announcement...They’re looking at what it looks like to fabricate that fuel, really start making it, and get it ready for those reactors.”

“We’re really excited to see this development, which turns those research investments into real fabrication of nuclear fuel. We’re looking forward to it.”

**[Watch the Interview](#)**



**Dr. Kathryn Huff, U.S. Assistant Secretary of Energy for Nuclear Energy, was interviewed at COP28 to discuss the recent FEED study agreement between Lightbridge and Centrus Energy.**

## Nuclear News and Updates from Lightbridge

### Lightbridge Participates in First Official Panel on a COP Stage on Nuclear Energy at COP28

The panel discussion focused on the critical contribution of nuclear energy to the transition towards sustainable energy sources, offering an in-depth exploration of the future prospects of nuclear power highlighting groundbreaking technologies and innovations with the potential to significantly transform the global energy paradigm.

[Read the Announcement](#)



### Nuclear Newswire: Nuclear energy has watershed moment at COP28

"The world is finally acting on what leading international organizations and climate experts have been saying for years—that expanding nuclear energy is an essential part of achieving our #climate goals." **Written by Lightbridge President & CEO Seth Grae**

[Read the Article](#)

### IAEA: Nuclear Power Finally Has its Moment at UN Climate Summit

"The landmark declaration invited the World Bank, regional development banks, and international financial institutions to include nuclear in their lending while underscoring the need for secure supply chains to ramp up deployment of the technology."

[Read the Article](#)





## Recent Lightbridge Media Appearances



Lightbridge President and CEO Seth Grae was interviewed on December 11, 2023 by Al Arabiya TV's Naser El Tibi at COP28, discussing the future role of nuclear power in addressing the world's climate and energy needs.

[Watch the Interview](#)



Mark Cojuangco, a member of Congress in the Philippines and Chair of the House Special Committee on Nuclear Energy, a long-time advocate for nuclear power, interviews Lightbridge President & CEO Seth Grae on the sidelines of COP28 on December 9, 2023.

[Watch the Interview](#)



Lightbridge President and CEO Seth Grae was interviewed by BNN Bloomberg TV on December 7, 2023 to discuss the U.S. joining with other countries in the pledge at COP28 to triple global nuclear power by 2050, along with Lightbridge's recent contract to conduct a front-end engineering and design (FEED) study to add a dedicated Lightbridge Pilot Fuel Fabrication Facility (LPFFF) at Centrus Energy's American Centrifuge Plant in Piketon, Ohio.

[Watch the Interview](#)

# Lightbridge

## Nuclear News and Updates from Lightbridge

### Lightbridge team visits Texas A&M University to kick off the recently awarded Nuclear Energy University Program (NEUP) project

In July, Texas A&M University was awarded approximately \$1,000,000 by the U.S. Department of Energy's Nuclear Energy University Program R&D Awards to study the deployment of advanced nuclear fuels in Small Modular Reactors. The study consists of a characterization of the performance of Lightbridge Fuel™ inside an SMR designed by NuScale Power.

[Read the Announcement](#)



Lightbridge's James Fornof, Vice President of Program Management (first from the left) and Dr. Scott Holcombe, Vice President of Engineering (fourth from the left) are joined by Prof. Yassin A. Hassan, Director of the Center for Advanced Small Modular and Micro Nuclear Reactors (CASMR) at Texas A&M University (third from the left)



### Atlantic Council: Sherri Goodman Live from COP28 on the energy transition and national security

Sherri Goodman, Lightbridge Independent Director and Secretary General of the International Military Council on Climate sits with Landon Derentz of the Atlantic Council's Global Energy Center at COP28's Global Decarbonization Accelerator to discuss the risks that climate change poses to national security and how the energy transition can provide opportunities for creating a more agile defense sector.

[Watch the Interview](#)

### Lightbridge Signs Net Zero Nuclear Industry Pledge

The Net Zero Nuclear Industry Pledge, endorsed by 120 companies, was launched in an event held as part of the COP28 Presidency Thematic Program, in Dubai. The pledge calls for a tripling of nuclear capacity by 2050.

[Read the Pledge](#)





## Other Nuclear News and Updates

### WNN: Ministerial declaration puts nuclear at heart of climate action

The heads of state, or senior officials, from Bulgaria, Canada, the Czech Republic, Finland, France, Ghana, Hungary, Japan, South Korea, Moldova, Mongolia, Morocco, the Netherlands, Poland, Romania, Slovakia, Slovenia, Sweden, Ukraine, the United Arab Emirates, the UK and the USA signed the declaration at the conference taking place in Dubai.

[Read the Article](#)



### Bank of America analysts are bullish on nuclear energy and say nuclear is “the cheapest scalable, clean energy source by far.”

“After a decade of underinvestment, a shortage is visible; our strategists forecast 20-40% upside. Global demand is also rising, with 60 new reactors being built & 100 more approved. Resource nationalism, energy security, war and inflation echo the nuclear build-out of the 1970s/80s.

[Read the Report](#)

ibit 11: Global reactor demand could more than double  
uclear plants at different stages of the construction process

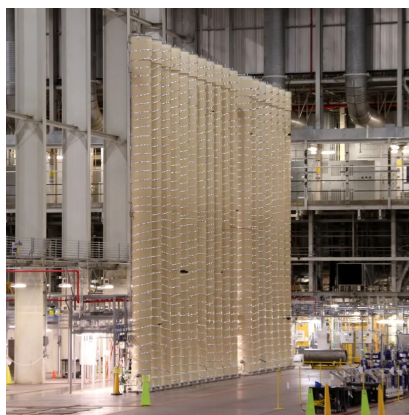


ce: BoFA Research Investment Committee, World Nuclear Organization  
BoFA GLOBAL RES

### IEEE Spectrum: Centrus Energy delivers first batch of uranium that’s critical for advanced reactors

Centrus Energy in Bethesda, Md., jump-started the first commercial domestic nuclear fuel production in the United States in 70 years by delivering the first load of high-assay, low-enriched uranium (HALEU) fuel made at its Piketon, Ohio, plant to the U.S. Department of Energy (DOE).

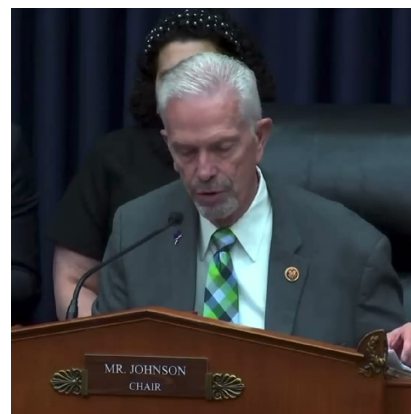
[Read the Article](#)



### The Review: Johnson reintroduces nuclear energy competitiveness act

U.S. Rep. Bill Johnson reintroduced legislation that he says will strengthen the nation’s nuclear energy competitiveness. The legislation would require the secretary of the U.S. Department of Energy to develop and submit a report to Congress on the nation’s nuclear commerce within 180 days of its passage.

[Read the Article](#)



## **About Lightbridge Corporation**

**Lightbridge Corporation (NASDAQ: LTBR) is focused on developing advanced nuclear fuel technology essential for delivering abundant, zero-emission, clean energy and providing energy security to the world. The Company is developing Lightbridge Fuel™, a proprietary next-generation nuclear fuel technology for existing light water reactors and pressurized heavy water reactors, significantly enhancing reactor safety, economics, and proliferation resistance. The Company is also developing Lightbridge Fuel for new small modular reactors (SMRs) to bring the same benefits plus load-following with renewables on a zero-carbon electric grid.**

**Lightbridge has entered into two long-term framework agreements with Battelle Energy Alliance, LLC, the United States Department of Energy's (DOE) operating contractor for Idaho National Laboratory (INL), the United States' lead nuclear energy research and development laboratory. DOE's Gateway for Accelerated Innovation in Nuclear (GAIN) program has twice awarded Lightbridge to support the development of Lightbridge Fuel over the past several years. Lightbridge is participating in two university-led studies through the DOE Nuclear Energy University Program at Massachusetts Institute of Technology and Texas A&M University. An extensive worldwide patent portfolio backs Lightbridge's innovative fuel technology. Lightbridge is included in the Russell Microcap® Index. For more information, please visit [www.ltbridge.com](http://www.ltbridge.com).**

**To receive Lightbridge Corporation updates via e-mail, subscribe at <https://www.ltbridge.com/investors/news-events/email-alerts>**

**Lightbridge is on Twitter. Sign up to follow [@LightbridgeCorp](https://twitter.com/LightbridgeCorp) at <http://twitter.com/lightbridgecorp>.**

**Lightbridge is on Threads [@lightbridgecorp](https://www.threads.net/@lightbridgecorp).**

**Lightbridge is on We Don't Have Time. Join the dialogue at <https://app.wedonthavetime.org/profile/Lightbridge>**

**For an introductory video on Lightbridge, please visit [www.ltbridge.com](http://www.ltbridge.com) or click [here](#) to watch the video.**

### **Investor Relations Contact:**

**Matthew Abenante, IRC**

**Director of Investor Relations**

**Tel: +1 (347) 947-2093**

**[ir@ltbridge.com](mailto:ir@ltbridge.com)**

### **Forward-Looking Statements**

With the exception of historical matters, the matters discussed herein are forward-looking statements, including statements regarding the anticipated benefits and results of the FEED study, the completion of the LPFFF, and Lightbridge Fuel's™ ability to utilize HALEU in existing and future reactors, including SMRs. These statements are based on current expectations on the date of this news release and involve a number of risks and uncertainties that may cause actual results to differ significantly from such estimates. The risks include, but are not limited to: Lightbridge's ability to commercialize its nuclear fuel technology; the degree of market adoption of Lightbridge's product and service offerings; Lightbridge's ability to fund general corporate overhead and outside research and development costs; market competition; our ability to attract and retain qualified employees; dependence on strategic partners; demand for fuel for nuclear reactors; Lightbridge's ability to manage its business effectively in a rapidly evolving market; the availability of nuclear test reactors and the risks associated with unexpected changes in Lightbridge's fuel development timeline; the increased costs associated with metallization of Lightbridge's nuclear fuel; public perception of nuclear energy generally; changes in the political environment; risks associated with war in Europe; changes in the laws, rules and regulations governing Lightbridge's business; development and utilization of, and challenges to, Lightbridge's intellectual property; risks associated with potential shareholder activism; potential and contingent liabilities; as well as other factors described in Lightbridge's filings with the Securities and Exchange Commission (the "SEC"). Lightbridge does not assume any obligation to update or revise any such forward-looking statements, whether as the result of new developments or otherwise, except as required by law. Readers are cautioned not to put undue reliance on forward-looking statements.

A further description of risks and uncertainties can be found in Lightbridge's Annual Report on Form 10-K for the fiscal year ended December 31, 2022, and in its other filings with the Securities and Exchange Commission, including in the sections thereof captioned "Risk Factors" and "Forward-Looking Statements", all of which are available at <http://www.sec.gov/> and [www.ltbridge.com](http://www.ltbridge.com).