

INCREASING SHAREHOLDER VALUE
ENHANCING SIZE AND SCALE
LOWERING BREAK-EVEN COSTS



RING ENERGY ACQUIRES STRONGHOLD ENERGY II
TRANSACTION SUMMARY
July 5, 2022

Forward-Looking Statements and Cautionary Notes

Forward –Looking Statements

This Presentation includes "forward-looking statements" within the meaning of the Private Securities Litigation Reform Act of 1995, Section 27A of the Securities Act of 1933, as amended, and Section 21E of the Securities Exchange Act of 1934, as amended. All statements, other than statements of strictly historical facts included in this Presentation constitute forward-looking statements and may often, but not always, be identified by the use of such words as "may," "will," "should," "could," "intends," "estimates," "expects," "anticipates," "plans," "project," "guidance," "target," "potential," "possible," "probably," and "believes" or the negative variations thereof or comparable terminology. The forward-looking statements include statements about the expected benefits of the acquisition of certain assets (the "Stronghold Acquisition") from Stronghold Energy II Operating LLC and Stronghold Royalties, LP (collectively "Stronghold") by Ring, the expected future reserves, production, financial position, business strategy, revenues, earnings, free cash flow, cost, capital expenditures and debt levels of Ring, and plans and objectives of Ring management for future operations. Forward-looking statements are subject to numerous assumptions, risks and uncertainties that may cause actual results to be materially different than any future results expressed or implied in those statements. However, whether actual results and developments will conform to expectations is subject to a number of material risks and uncertainties, including but not limited to: declines in oil, natural gas liquids or natural gas prices; the level of success in exploration, development and production activities; the timing of exploration and development expenditures; inaccuracies of reserve estimates or assumptions underlying them; revisions to reserve estimates as a result of changes in commodity prices or production history; impacts to financial statements as a result of impairment write-downs; risks related to level of indebtedness and periodic redeterminations of the borrowing base under the Company's credit facility; the impacts of hedging on results of operations; the Company's ability to replace oil and natural gas reserves; any loss of senior management or technical personnel; and the direct and indirect impact on most or all of the foregoing due to the COVID-19 pandemic. Some of the factors that could cause actual results to differ materially from expected results are described under "Risk Factors" in our 2021 annual report on Form 10-K filed with the U.S. Securities and Exchange Commission ("SEC") on March 16, 2022, and in our subsequent quarterly reports on Form 10-Q and current reports on Form 8-K. Although the Company believes that the assumptions upon which such forward-looking statements are based are reasonable, it can give no assurance that such assumptions will prove to be correct. All forward-looking statements in this Presentation are expressly qualified by the cautionary statements and by reference to the underlying assumptions that may prove to be incorrect. Material risks with respect to the Stronghold Acquisition include the risk that the acquisition may not close due to unforeseen circumstances and issues that may be discovered in the review of the assets proposed to be acquired, the inability of the Ring's lending banks or Ring to complete the expected amendment to Ring's revolving credit facility that is proposed to provide for a \$600 million borrowing base, failure to achieve the expected benefits of the acquisition to Ring and its stockholders, failure to complete the acquisition on a timetable in line with Ring management's expectations, and uncertainties regarding the expected future reserves, production, financial position, business strategy, revenues, earnings and cost levels of the combined company. Additional risks include completion of the acquisition on anticipated terms and timetable, the ability to integrate the operations of the combined entity successfully after the acquisition and achieve its anticipated benefits, the possibility that various closing conditions for the acquisition may not be satisfied or waived, risks related to any unforeseen liabilities of Ring or the assets proposed to be acquired, and risks related to the amounts of debt levels in periodic redeterminations of the borrowing base under Ring's credit agreement and risks involved in amending the credit agreement.

The Company undertakes no obligation to publicly revise these forward-looking statements to reflect events or circumstances that arise after the date hereof, except as required by applicable law. The financial and operating estimates contained in this presentation represent our reasonable estimates as of the date of this Presentation. Neither our independent auditors nor any other third party has examined, reviewed or compiled the projections and, accordingly, none of the foregoing expresses an opinion or other form of assurance with respect thereto. The assumptions upon which the projections are based are described in more detail herein. Some of these assumptions inevitably will not materialize, and unanticipated events may occur that could affect our results. Therefore, our actual results achieved during the periods covered by the estimates will vary from the projected results. Prospective investors are cautioned not to place undue reliance on the estimates included herein.

Cautionary Note regarding Hydrocarbon Disclosures

The SEC has generally permitted oil and natural gas companies, in their filings with the SEC, to disclose proved reserves, which are reserve estimates that geological and engineering data demonstrate with reasonable certainty to be recoverable in future years from known reservoirs under existing economic and operating conditions, and certain probable and possible reserves that meet the SEC's definitions for such terms. We use the terms "estimated ultimate recovery," or "EURs," "probable," "possible," and "non-proven" reserves, reserve "potential" or "upside" or other descriptions of volumes of reserves potentially recoverable through additional drilling or recovery techniques that the SEC's guidelines prohibit us from including in filings with the SEC. Reference to EURs of natural gas and oil includes amounts that are not yet classified as proved reserves under SEC definitions, but that we believe should ultimately be produced and are based on previous operating experience in a given area and publicly available information relating to the operations of producers who are conducting operations in these areas. These estimates are by their nature more speculative than estimates of proved reserves and accordingly are subject to substantially greater risk of being actually realized by us. Factors affecting the ultimate recovery of reserves that may be recovered include the scope of our drilling programs, which will be directly affected by capital availability, drilling and production costs, commodity prices, availability of services and equipment, permit expirations, transportation constraints, regulatory approvals and other factors, and actual drilling results, including geological and mechanical factors affecting recovery rates. Accordingly, actual quantities that may be recovered from our interests will differ from our estimates and could be significantly less than our targeted recovery rate. In addition, our estimates may change significantly as we receive additional data.

Supplemental Non-GAAP Financial Measures

This Presentation includes financial measures that are not in accordance with accounting principles generally accepted in the United States ("GAAP"), such as "Adjusted Net Income," "Adjusted EBITDA," "PV-10," "Free Cash Flow," or "FCF," and "Cash Flow from Operations." While management believes that such measures are useful for investors, they should not be used as a replacement for financial measures that are in accordance with GAAP. For definitions of such non-GAAP financial measures and their reconciliations to GAAP measures, please see the Appendix.

Transformational Transaction

Increases Free Cash Flow¹

Enhances Size & Scale

Strengthens Balance Sheet

**Accelerates Ability to Pay
Down Debt**

**Improves Low Break-even
Costs**

Immediately Accretive to:

- ✓ Cash flow/share¹
- ✓ FCF/share¹
- ✓ FCF yield¹
- ✓ Production/share¹
- ✓ Reserves²/share¹

Immediately Lowers:

- ✓ Leverage ratio < 1.5x³
- ✓ LOE/Boe¹
- ✓ GP&T/Boe¹
- ✓ G&A/Boe¹

Increases Inventory of High-ROR Projects

- ✓ Several hundred low-cost high-ROR recompletions
- ✓ Several hundred low-cost, high-ROR infill locations
- ✓ PROB, POSS – significant low-cost high ROR step outs

Q4 2022 Production²

Up **~100%**

Q4 2022E Adj. EBITDA^{1,2}

Up **>80%**

Q4 2022E FCF^{1,2}

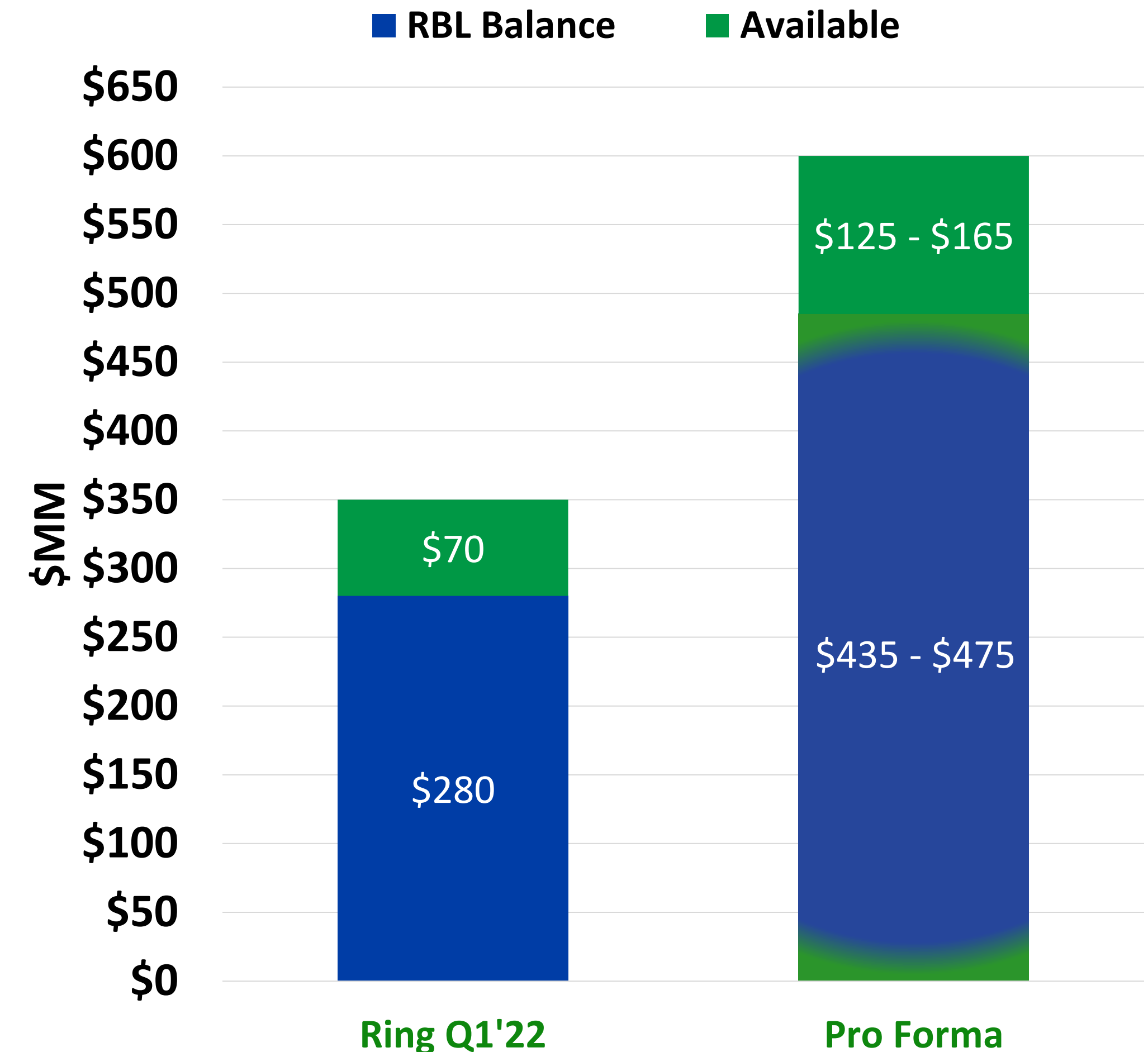
Up **>100%**

Purchase Price and Funding Overview

\$465 million in total consideration

- ✓ \$200 million cash at closing, subject to purchase price adjustments
- ✓ \$15 million deferred cash payment, 6 months after closing
- ✓ \$20 million existing Stronghold hedge liability
- ✓ \$230 million Ring Energy stock
 - \$76.8 million in common stock (~21.3 mm shares of common stock)
 - \$153.2 million in convertible preferred stock (which will be converted to ~42.5 mm shares of common stock upon stockholder approval of the conversion)
- ✓ 51% Cash, deferred payment & hedge liability; 49% Equity
- ✓ Pro forma equity ownership – Ring ~66%; Stronghold ~34%
- ✓ Effective date of the Transaction is June 1, 2022
- ✓ Anticipated closing date in the 3rd quarter 2022

\$1 billion underwritten credit facility with upgraded borrowing base to \$600 million, improves liquidity and lowers leverage ratio



Pro Forma Overview of Key Metrics

Operational and Financial Metrics increase by 50% to over 100%

Nearly doubles production, proved developed reserves, and free cash flow

- ✓ Establishes premier CBP and NWS operator positioned to drive consolidation & value creation
- ✓ Enhanced free cash flow profile accelerates debt repayment targeting YE'22 leverage ratio < 1.5x

	REI Standalone ⁴ Q4 2022	REI Pro Forma Q4 2022	% Change
Net Production (MBoe/d)	9.0-9.6 (~87% Oil)	18-19 (~70% oil)	~100%
Adjusted EBITDA ¹ (\$MM)	\$43-48	\$82-86	>80%
Free Cash Flow ¹ (\$MM)	\$3-4	\$16-\$20	100%+
PD Reserves ⁵ PV10 (\$MM)	\$1,020	\$1,739	70%
PD Reserves ⁵ (MMBoe)	45.8	87.0	90%
Acreage	~64,000	~101,000	56%
Capex (\$MM)	\$35-39	\$50-54	41%
Fully Diluted Shares Outstanding ⁶ (MM)	126.6	190.5	50%

Strategic and Accretive Transaction Leads to Transformational Scale

Significantly Accretive on ALL KEY Share Metrics



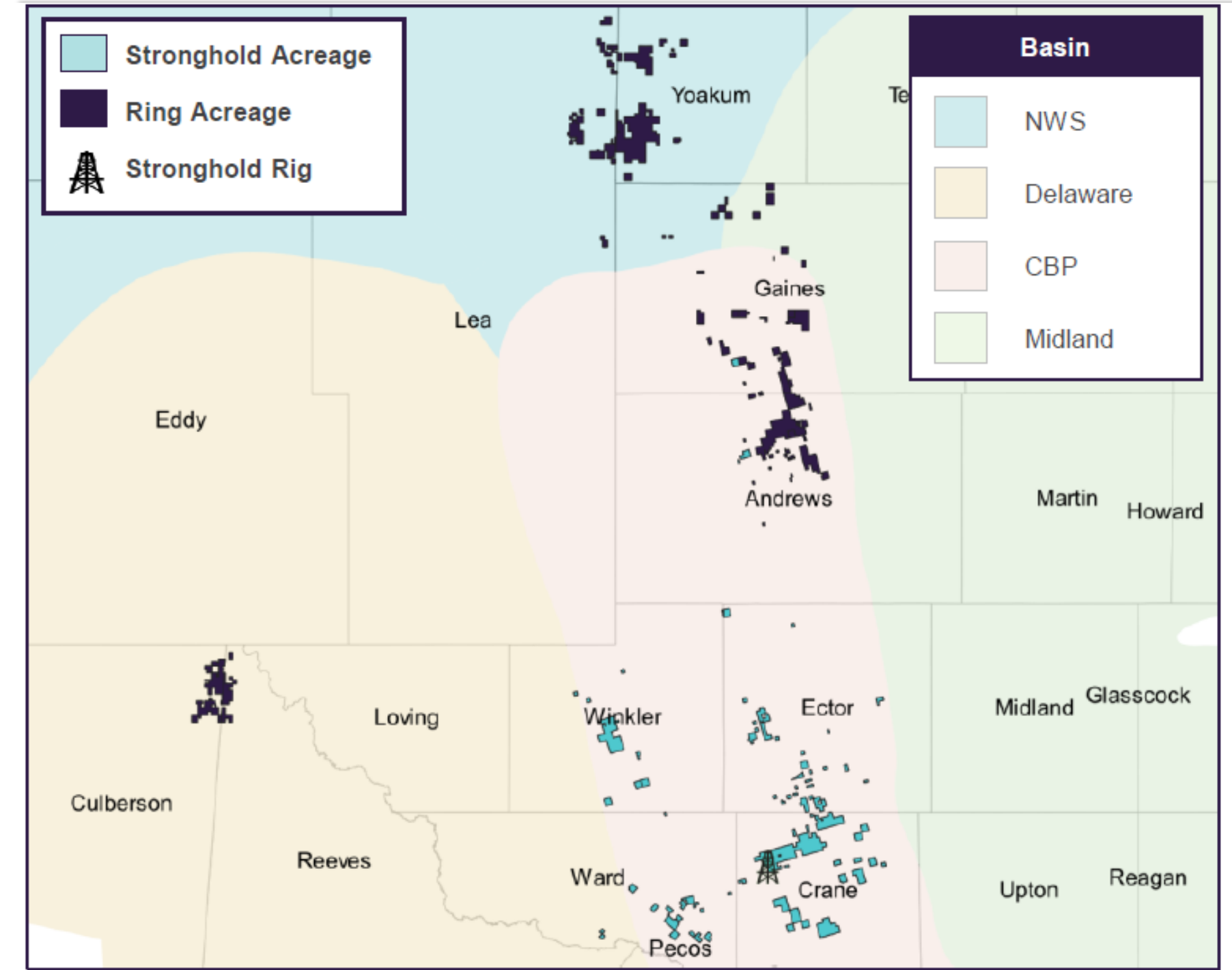
Stronghold Energy II Asset Overview

Acquisition Highlights

- ✓ Predictable PDP base with shallow declines & long-life Proved reserves
- ✓ Meaningful low-risk, high rate-of-return inventory
- ✓ Margin enhancing ownership with high NRI's,
- ✓ Stacked pay zones in most active CBP county
- ✓ Lower cost-structure significantly enhances free cash flow
- ✓ Accretive, capital efficient investment inventory enhances free cash flow through future capital program discipline and optimization

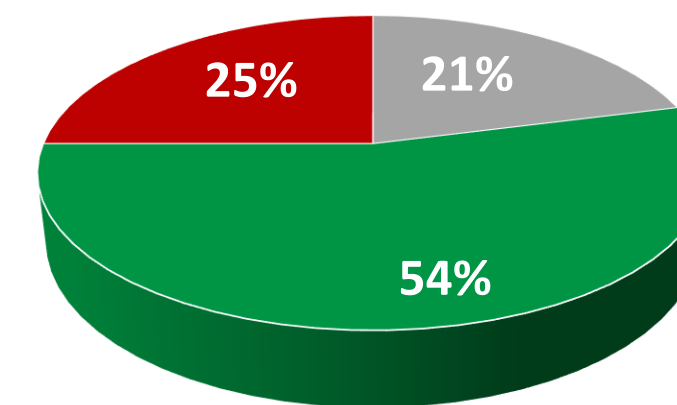
Asset Details

Current Production (Boe/d)	~9,100 Boe/d
PD Reserves⁵ MMBOE / PV-10¹ (\$MM)	41.2 / \$719
Proved Reserves⁵ MMBOE / PV-10¹ (\$MM)	66.6 / \$971.5
Total Net Acres	~37,000
% HBP / % Operated	99% / 99%
Producing Wells	~605
Avg WI/NRI	99% / ~88%oil & 96% gas



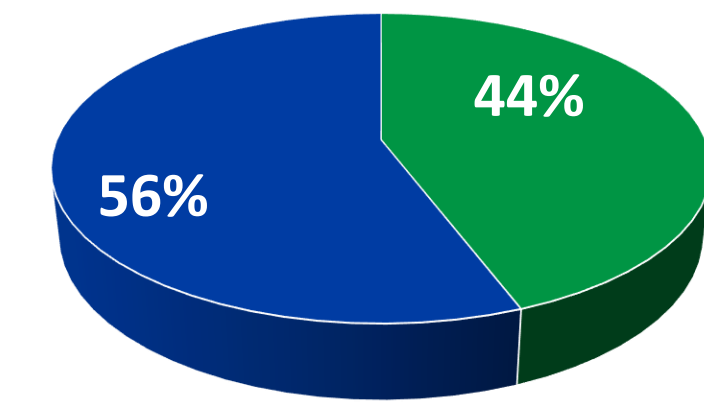
Net Production & Inventory by Category

Boe/d ~ 9,100



■ NGLs ■ Oil ■ Gas

Inventory 500+

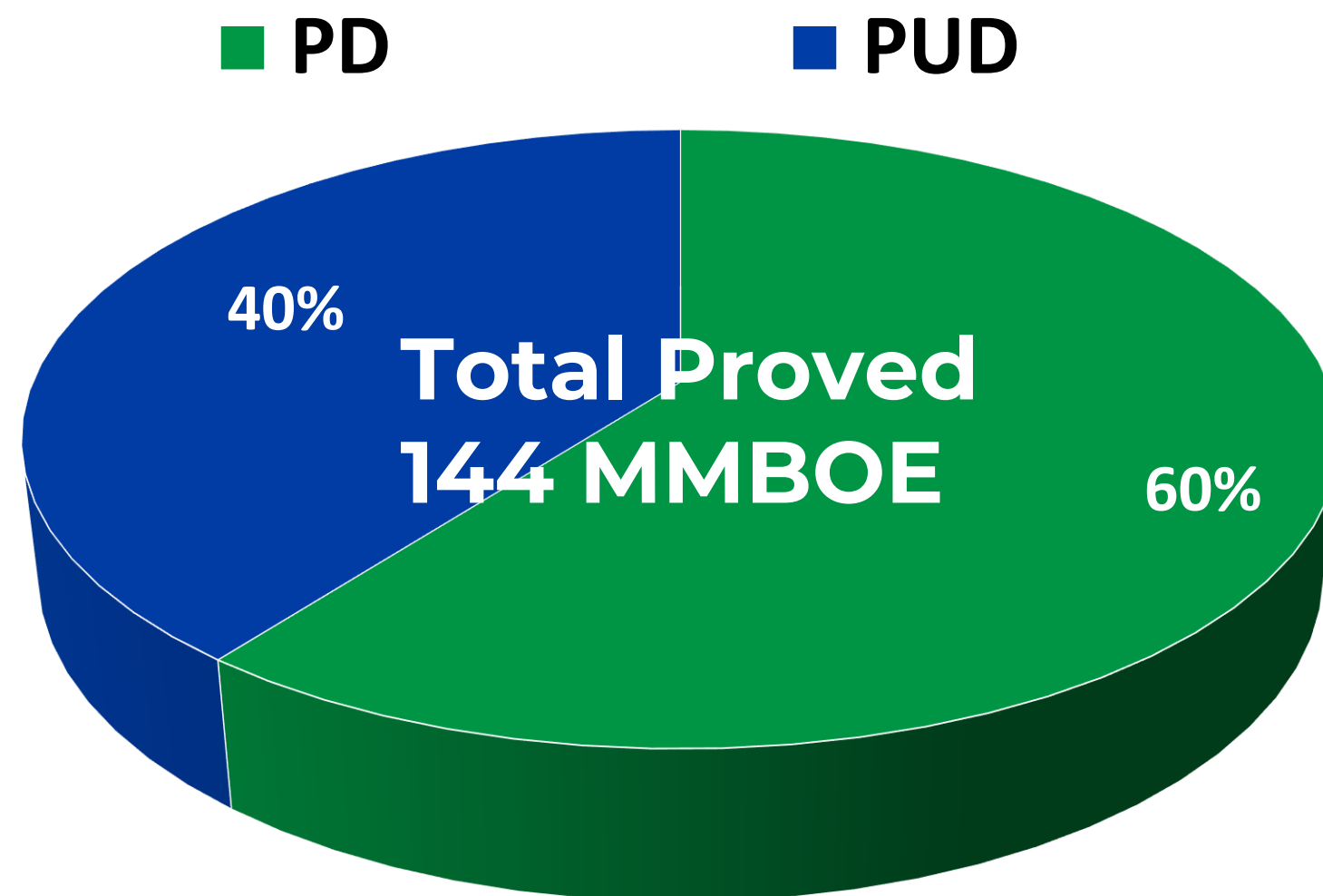


■ Recompletions
■ Vertical New Drill Locations

Step Change in Proved Reserve Value

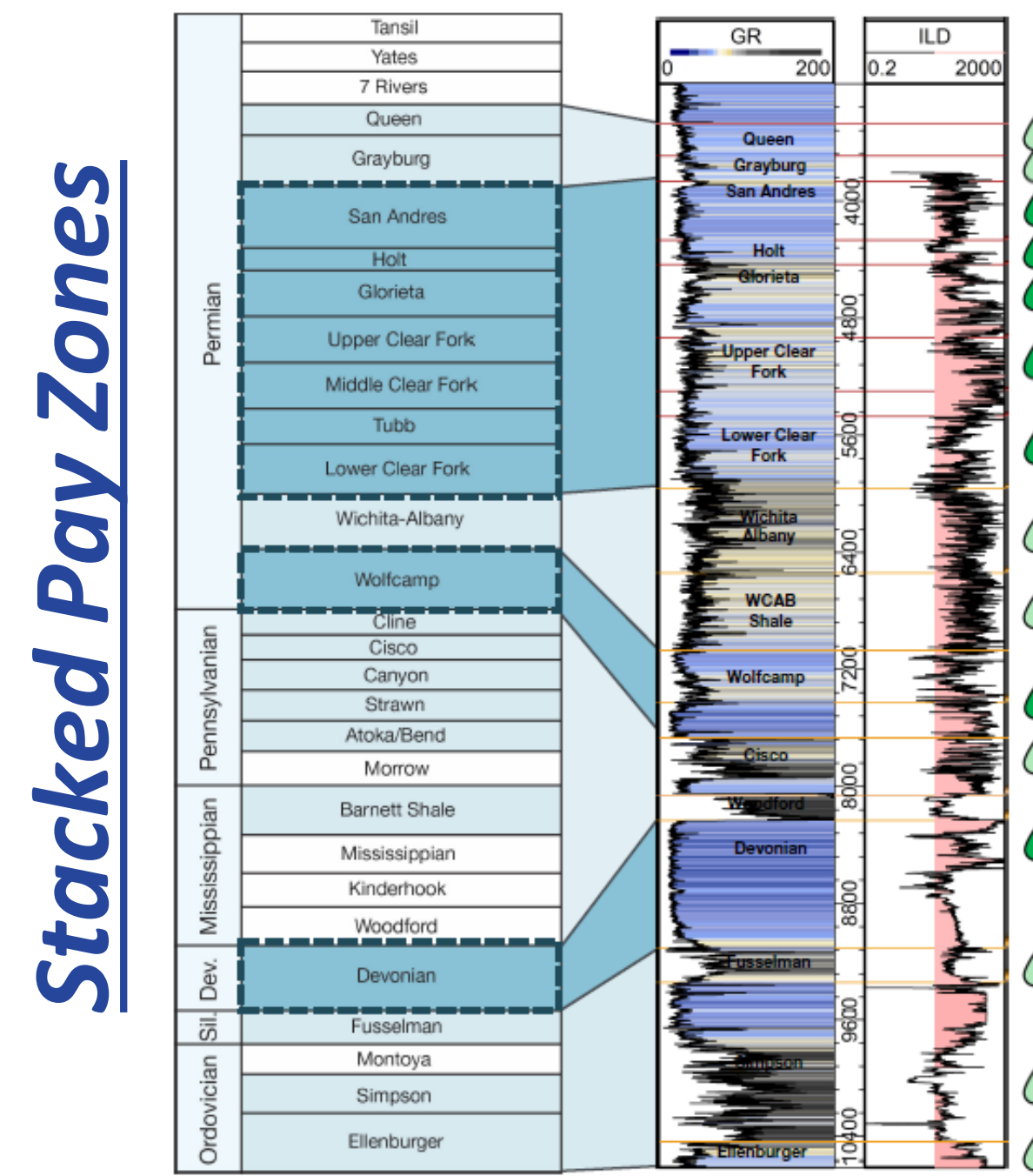
Pro Forma Proved Reserves⁵

1P Reserves	PV-10 ¹ \$MM
Proved Developed	\$1,739
Proved Undeveloped	\$906
Total Proved	\$2,645



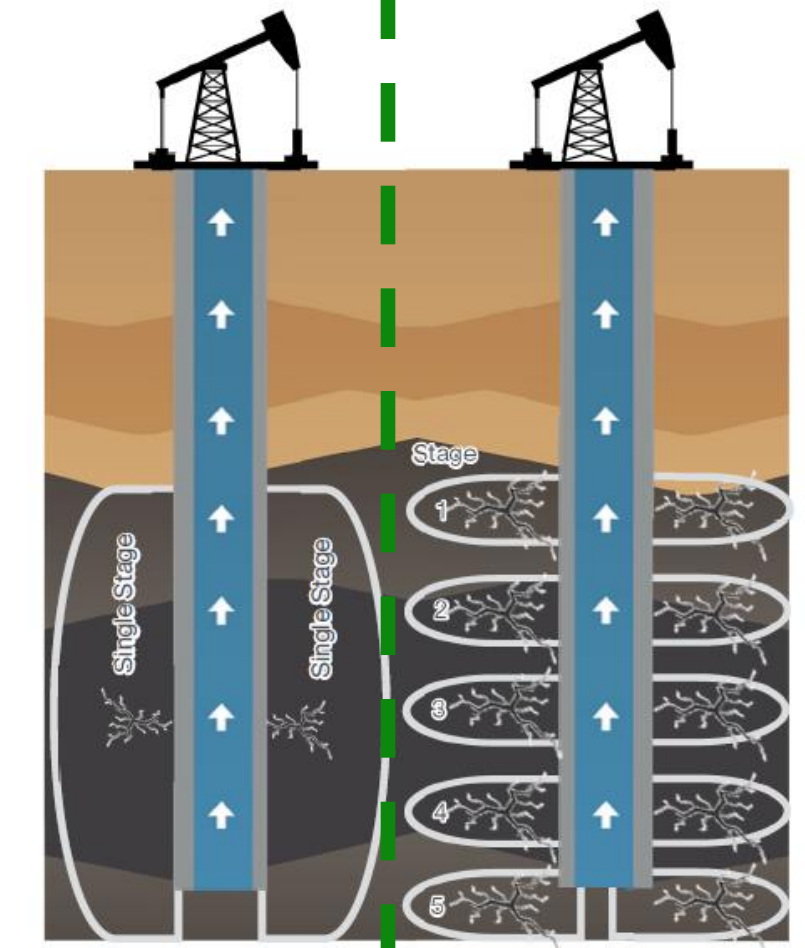
High Quality Conventional Asset

Stronghold Stratigraphic Drilling Opportunities



Modern Completion Methods

Legacy Simple Single Stage Completion Modern Multi-Stage Completion Technique



- ✓ Conventional “high quality rock” stacked pay formations targeted with today's modern multi-stage completion methods
- ✓ Years worth of inventory with low breakeven drilling economics of \$20-25 per Bbl

Other Transaction Details

Approvals and Timing

Unanimously approved by Ring Board of Directors

- ✓ Subject to customary closing conditions, including regulatory approvals
- ✓ Transaction effective date is June 1, 2022
- ✓ Anticipated closing in third quarter 2022
- ✓ Hold Special Stockholders Meeting to approve conversion of preferred stock to common stock

Leadership & Governance

Ring to expand existing board of directors

- ✓ Two additional Warburg directors to be appointed to existing Ring Board at closing
- ✓ Paul McKinney to remain Chairman & CEO
- ✓ Ring Management to remain in existing executive roles
- ✓ Company headquarters remains in The Woodlands, TX with increased Midland, TX presence for foreseeable future

**Transaction Effective Date
June 1, 2022**

**Anticipated Closing Date
in third quarter 2022**

**Two Additional Warburg
Directors Enhances REI Board**

**Existing REI Executive Team
Continues in Existing Roles**

**Company Headquarters Remains in
The Woodlands, Texas**

Transaction Enhances Shareholder Value



Significantly Increases Size and Scale

Nearly Doubles Production, Reserves and Projected Adjusted EBITDA¹



Enhances Free Cash Flow Generation and Cash Margins

Enhances Cash Flow and Lowers LOE/Boe, GP&T/Boe & G&A/Boe



Increases Proved Reserves & High IRR Inventory

Lowers Break-Even-Costs by Adding Hundreds Low-Cost drilling Locations & recompletions



Accelerates Ability to Pay Down Debt

Targeting Leverage Ratio³ of less than ~1.5x by Year-End 2022



Accretive on Key Financial Metrics

Immediately Accretive to CF/Share¹, FCF/share¹, FCF yield¹

COMPANY CONTACT

Al Petrie

(281) 975-2146
apetrie@ringenergy.com

Chris Delange

(281) 975-2146
cdelange@ringenergy.com

ANALYST COVERAGE

Alliance Global Partners (A.G.P.)

Jeff Campbell (203) 577-5427
jcampbell@alliancecg.com

Tuohy Brothers Investment

Noel Parks (215) 913-7320
nparks@tuohybrothers.com

ROTH Capital Partners

John M. White (949) 720-7115
jwhite@roth.com

Truist Financial

Neal Dingmann (713) 247-9000
neal.dingmann@truist.com

APPENDIX



Footnotes

- June 21, 2022 NYMEX Strip Pricing for WTI /HH used throughout the presentation: 2022:\$107.12 / \$7.10; 2023: \$92.89 / \$5.35; 2024: \$83.09 / \$4.76; 2025: \$76.31 / \$4.63; 2026+: \$71.68 / \$4.62
- Based on NYMEX strip pricing as of June 21, 2022. Expected impact on Ring's guidance is dependent upon the timing of closing, anticipated capital spending levels, and market conditions. Updated guidance will be provided after closing.

1. Represents a non-GAAP financial measure that should not be considered a substitute for any GAAP measure. See Non-GAAP Information.

2. Net production, Adjusted EBITDA & FCF are all unhedged projections at June 21, 2022 NYMEX Strip prices and compared to consensus

3. Defined as total debt divided by trailing twelve months ("TTM") Adjusted EBITDA

4. Source for REI standalone metrics for Q4 2022 is factset consensus +/-5%

5. Proved reserves for REI are management estimates as of June 1, 2022 and Stronghold estimates as of June 1, 2022 were prepared by CGA, both used
June 21, 2022 NYMEX Strip prices

6. The dilutive effect of restricted stock, stock options and warrants is calculated using the Treasury Stock method as of June 30, 2022

Non-GAAP Information

Certain financial information utilized by the Company are not measures of financial performance recognized by accounting principles generally accepted in the United States (“GAAP”).

The Company defines Adjusted EBITDA as net income (loss) plus net interest expense, unrealized loss (gain) on change in fair value of derivatives, ceiling test impairment, income tax (benefit) expense, depreciation, depletion and amortization, asset retirement obligation accretion and share-based compensation. Company management believes this presentation is relevant and useful because it helps investors understand the Company’s operating performance and makes it easier to compare its results with those of other companies that have different financing, capital and tax structures. Adjusted EBITDA should not be considered in isolation from or as a substitute for net income, as an indication of operating performance or cash flows from operating activities or as a measure of liquidity. Adjusted EBITDA, as the Company calculates it, may not be comparable to Adjusted EBITDA measures reported by other companies. In addition, Adjusted EBITDA does not represent funds available for discretionary use.

The Company defines Free Cash Flow as Adjusted EBITDA (defined above) less net interest expense (excluding amortization of deferred financing cost), capital expenditures and proceeds from divestiture of oil and natural gas properties. For this purpose, the Company’s definition of capital expenditures includes costs incurred related to oil and natural gas properties (such as drilling and infrastructure costs and the lease maintenance costs) and equipment, furniture and fixtures, but excludes acquisition costs of oil and gas properties from third parties that are not included in the Company’s capital expenditures guidance provided to investors. Company management believes that Free Cash Flow is an important financial performance measure for use in evaluating the performance and efficiency of its current operating activities after the impact of accrued capital expenditures and net interest expense and without being impacted by items such as changes associated with working capital, which can vary substantially from one period to another. There is no commonly accepted definition Free Cash Flow within the industry. Accordingly, Free Cash Flow, as defined and calculated by the Company, may not be comparable to Free Cash Flow or other similarly named non-GAAP measures reported by other companies. While the Company includes net interest expense in the calculation of Free Cash Flow, other mandatory debt service requirements of future payments of principal at maturity (if such debt is not refinanced) are excluded from the calculation of Free Cash Flow. These and other non-discretionary expenditures that are not deducted from Free Cash Flow would reduce cash available for other uses.

PV-10 is a non-GAAP measure that differs from a measure under GAAP known as “standardized measure of discounted future net cash flows” in that PV-10 is calculated without including future income taxes.