

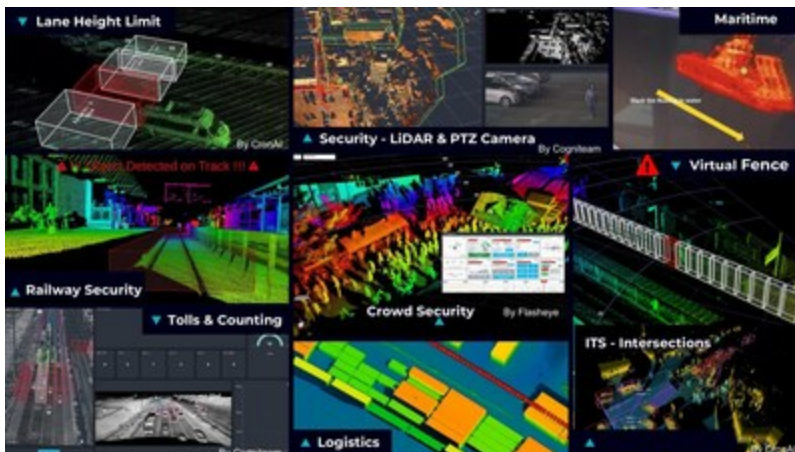
January 6, 2026



Introducing InnovizSMARTer: Combining Scalable, Cost-Effective LiDAR with Edge Compute Platform for Smart Infrastructure Powered by NVIDIA Jetson Orin Nano

- *One-Box Solution - simplifies sensor integration, streamlining packaging, faster deployment and cost saving*
- *Combining on-device processing with cloud-based AI applications to enable scalable wireless LiDAR deployments over constrained networks*
- *Unlocking new business growth potential with new addressable industries*
- *The solution will be demonstrated live at CES 2026, booth #7318*

TEL AVIV, Israel, Jan. 6, 2026 /PRNewswire/ -- [Innoviz Technologies](#) Ltd. (Nasdaq: INVZ), a leading supplier of high-performance LiDAR solutions, announced today the integration of its InnovizSMARTer LiDAR with [NVIDIA Jetson Orin Nano](#). The new solution delivers a complete far edge solution for real-time 3D perception, enabling wireless deployment of LiDAR sensors in bandwidth-constrained environments while significantly reducing the centralized processing cost.



The integration with NVIDIA Jetson Orin Nano addresses a major barrier in smart infrastructure. High-performing LiDAR sensors generate gigabits per second of raw data, which is impractical for wireless or cloud-based systems. The compact form factor and high GPU efficiency of NVIDIA Jetson Orin Nano makes it an ideal selection for edge-processing and real-time compression. InnovizSMARTer reduces data transmission requirements by 1 to 2 orders of magnitude, eliminating the requirement for costly fiber infrastructure and

enabling flexible, scalable deployments. The solution supports Wi-Fi, LTE, 5G, as well as other wireless networks, making high-performance 3D perception possible in multiple markets and use cases, including smart cities, mobility, perimeter security, and more.

With a cost-effective, cloud-connected solution, InnovizSMARTer, integrated with NVIDIA Jetson Orin Nano simplifies installations, allowing customers to deploy more sensors, faster, and in more locations. This is expected to dramatically shorten project timelines and lowers upfront investment, making advanced 3D perception accessible to a wider range of customers and use cases. The cloud-based architecture is designed to allow customers to monitor, manage, and scale their projects remotely, supporting rapid expansion across cities, campuses, and enterprises worldwide.

"This collaboration with NVIDIA demonstrates our commitment to making advanced LiDAR technology accessible and scalable," said Omer Keilaf, CEO and Founder of Innoviz Technologies. "By combining our LiDAR with NVIDIA AI infrastructure, we're expecting to open new opportunities for urban mobility, security, and intelligent infrastructure, while reducing deployment costs and complexity."

Customer Benefits:

- Real-time, high-resolution 3D sensing with edge compression - no need for high-power compute or fiber connectivity.
- Cloud-based for remote monitoring and digital twin applications.
- Wireless-first architecture for rapid, cost-effective deployments.
- Flexible, interoperable design for a wide range of infrastructure projects.

Live InnovizSMARTer Demonstration at CES 2026

Innoviz is participating in the Consumer Electronics Show (CES) 2026, taking place from January 6th – 9th in Las Vegas, Nevada. As part of the live demonstrations at the booth, visitors will be able to explore Innoviz's LiDAR solutions that are purpose-built for smart applications, integrating NVIDIA Jetson Orin Nano and showing real-time edge AI processing.

About Innoviz

Innoviz is a global leader in LiDAR technology, serving as a Tier 1 supplier to the world's leading automotive manufacturers and working towards a future with safe autonomous vehicles on the world's roads. As a Tier-1 supplier to leading automotive manufacturers, Innoviz has proven its technology in the most demanding environments. Through InnovizSMARTer, Innoviz now delivers this same performance in an off-the-shelf solution for security, intelligent traffic management, mobility, robotics, and aerial applications. Innoviz's LiDAR sensors provide industry-leading range, resolution, and reliability, delivering accurate 3D sensing in all weather conditions, day or night. Operating across the U.S., Europe, and Asia, Innoviz serves automotive OEMs, system integrators and commercial enterprises worldwide. For more information, visit [innoviz.tech](https://www.innoviz.tech).

Join the discussion: [Facebook](#), [LinkedIn](#), [YouTube](#), [X](#)

Media Contact

Media@innoviz-tech.com

Investor Contact

Investors@innoviz-tech.com

Forward Looking Statements

This announcement contains certain forward-looking statements within the meaning of the federal securities laws, including statements regarding the services offered by Innoviz, the anticipated technological capability of Innoviz's products, the markets in which Innoviz operates, Innoviz's projected future operational and financial results. These forward-looking statements generally are identified by the words "believe," "project," "expect," "anticipate," "estimate," "intend," "strategy," "future," "opportunity," "plan," "may," "should," "will," "would," "will be," "will continue," "will likely result," and similar expressions. Forward-looking statements are predictions, projections and other statements about future events that are based on current expectations and assumptions and, as a result, are subject to risks and uncertainties.

Many factors could cause actual future events, and in the case of our forward-looking revenues, actual orders or actual payments, to differ materially from the forward-looking statements in this announcement including but not limited to, the ability to implement business plans, forecasts, and other expectations, the ability to convert design wins into definitive orders and the magnitude of such orders, the ability to identify and realize additional opportunities, potential changes and developments in the highly competitive LiDAR technology and related industries, and our expectations regarding the impact of the evolving conflict in Israel to our ongoing operations. The foregoing list is not exhaustive. You should carefully consider such risk and the other risks and uncertainties described in Innoviz's annual report on Form 20-F for the year ended December 31, 2024, filed with the U.S. Securities and Exchange Commission ("SEC") on March 12, 2025 and in other documents filed by Innoviz from time to time with the SEC. These filings identify and address other important risks and uncertainties that could cause actual events and results to differ materially from those contained in the forward-looking statements. Forward-looking statements speak only as of the date they are made. Readers are cautioned not to put undue reliance on forward-looking statements, and Innoviz assumes no obligation and does not intend to update or revise these forward-looking statements, whether as a result of new information, future events, or otherwise. Innoviz gives no assurance that it will achieve its expectations.

Photo - <https://mma.prnewswire.com/media/2855349/InnovizSmart.jpg>

Logo - https://mma.prnewswire.com/media/2855348/Nvidia_Innoviz_Logo.jpg



View original content to download multimedia <https://www.prnewswire.com/news-releases/introducing-innovizsmarter-combining-scalable-cost-effective-lidar-with-edge-compute-platform-for-smart-infrastructure-powered-by-nvidia-jetson-orin-nano-302653680.html>

SOURCE Innoviz Technologies