



DiveVisionTracker

SmartVisionPlatform

The DiveVisionTracker is a ruggedized and waterproof subsea sensor comprising an ultra-low-light IR-sensitive camera and a precision motion sensor. Typically mounted on a diver's helmet or face mask as part of the DAVD Flex augmented reality system, it delivers excellent imagery in low-light conditions, while tracking the motion of the diver's head and providing a live feed to the compass displayed within the Head-Up Display. The DiveVisionTracker can also be vehicle-mounted, giving a clear RGB image of the scene ahead of the vehicle to complement any forward-looking sonar in use.

The DiveVisionTracker is part of the wider, highly configurable **DAVDflex** solution, and is designed to be integrated with industry-leading solutions without sacrificing performance, reliability or ease of use.

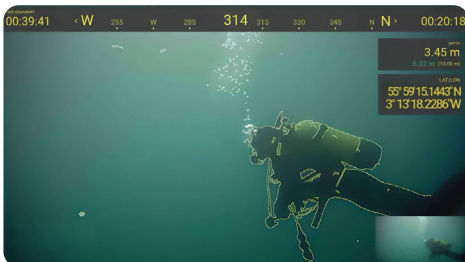
The **DAVDflex** integrates topside control, a Head-Up Display (HUD), and digital communications for divers, facilitating seamless real-time information exchange between divers and supervisors via augmented reality displays in the diver's helmet. Divers access critical technical data and support from surface teams to optimize mission outcomes and enhance underwater safety.



Vehicle and Diver Mounted, Ruggedized and Waterproof Subsea Sensor

Features

- Ruggedized and Waterproof
- Night Vision Supported
- Depth Rated to 100m (328ft)
- Integrated AHRS to provide Diver Heading Measurement



Footage Captured in DAVD*

Copyright©2026 Coda Octopus
The information in this publication was correct at the time of publishing however specifications may change without notice. Photos are included for illustrative purposes only and actual items may differ in appearance. Coda Octopus does not assume responsibility for typographical or photographic errors. Issue 1.2 (04.26).

Specifications

- 5 VDC Input

Video

- 2MP CMOS Sensor
- Full HD: 1920 x 1080 streaming at 30fps
- Electronic Rolling Shutter
- Minimum Illumination: 0.0005 Lux

Motion

- Roll/Pitch Performance: 0.2° RMS
- Heading Performance: 1° RMS

Physical

- Dimensions - 50mm x 50mm x 94mm approx.
(1.97 x 1.97 x 3.7 in approx)
- Weight - 197g (0.43 lbs) in air, 83g (0.18 lbs) in water (Approx)