



# Network Transformation Fuels Growth of 5G & the Edge

**Dan Rodriguez**

Corporate VP and GM, Network Platforms Group, Intel

# Industry Inflections Driving Growth

**5G Network**  
TRANSFORMATION



**AI**  
REVOLUTION



**EDGE**  
EXPLOSION



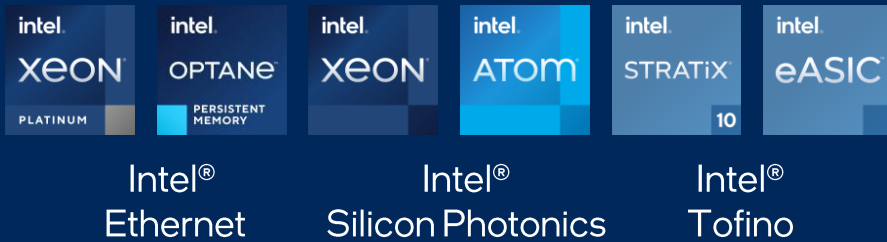
**CLOUDIFICATION**  
OF EVERYTHING



# Intel is Transforming the Network



## Workload Convergence Server-based networking



## Standards & Software Cloudification of the network



## Vast Ecosystem Innovation and collaboration

CoSPs, CSPs, OEMs, ODMs,  
TEMs, ISVs, OSVs, SIs

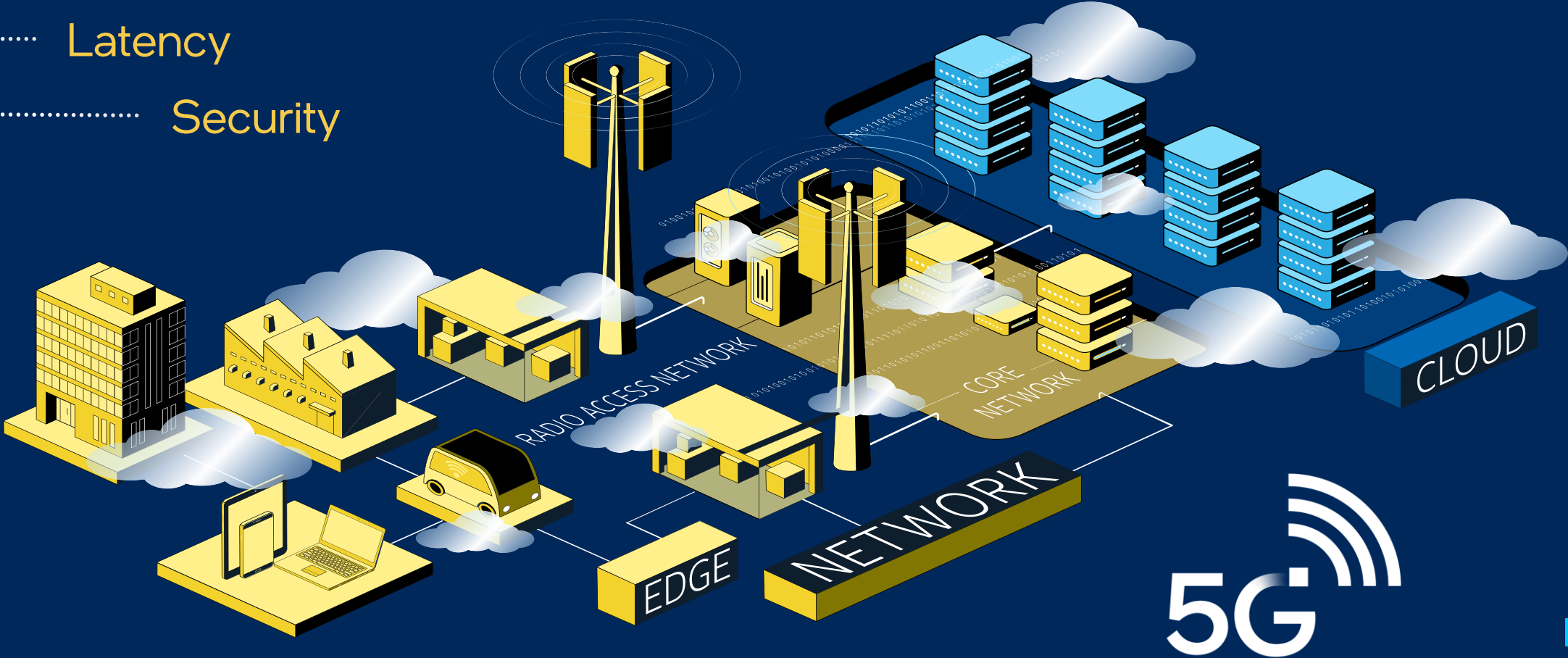
Intel® Network Builders

# Enabling Network Transformation in the 5G Era

Bandwidth

Latency

Security



# The Path to Edge

By 2025, **75 percent** of data will be created outside of central data centers.



# Summary

- **Our Opportunity**  
5G will transform industries
- **Industry Inflections**  
5G, AI, Intelligent Edge, Cloudification of everything
- **Ecosystem collaboration is critical**  
Intel delivering solutions through an unrivaled ecosystem

The Intel logo is centered on a dark blue background. It features the word "intel" in a white, lowercase, sans-serif font. A small, light blue square is positioned above the letter 'i'. To the right of the word is a registered trademark symbol (®). The background is decorated with a grid of small, light blue squares in the top-left corner and vertical dotted lines of small squares along the top and right edges.

intel®

# Notices and Disclaimers

Intel technologies may require enabled hardware, software or service activation.

No product or component can be absolutely secure.

Your costs and results may vary.

© Intel Corporation. Intel, the Intel logo, and other Intel marks are trademarks of Intel Corporation or its subsidiaries. Other names and brands may be claimed as the property of others.