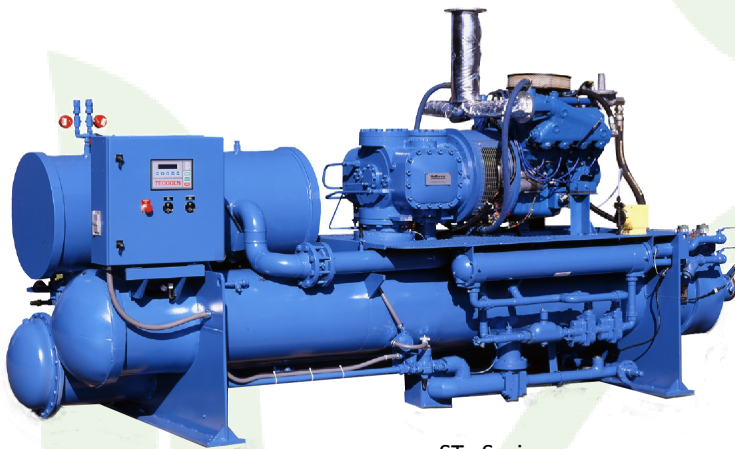




Natural Gas Engine-Driven Chillers Water-Cooled Stx / DTx Series



STx Series
150 & 200 Tons

Features & Benefits for Serious Growers

- Cut energy costs in **HALF** using cheap natural gas
- Free up as much as 300 kW of electrical capacity
- Reliable gas cooling keeps plants **SAFE** in a blackout
- Recycle ultra-clean exhaust gas for CO₂ enrichment
- Recover **FREE** engine heat for other facility uses
- Costs 30% to 60% less to run than an electric chiller
- Internet or cellular remote monitoring and control
- Nationwide Factory Service
- ETL listed, UL approved



DTx Series
300, 350 & 400 Tons



WATER-COOLED CHILLERS

| | |
|--|--|
| Full Load Rating [tons] | |
| IPLV COP ² | |
| Full Load COP ² | |
| COP with Total Heat Recovery | |
| Fuel Consumption [MBtu/hr @ HHV 1020 Btu/scf] | |
| Fuel Consumption [scfh] | |
| Fuel Pressure [in. wc, 27.703 in. wc = 1 psig] | |
| Available Total Heat Recovery [MBtu/hr] | |
| Maximum Supply Temperature [°F] | |

WATER SYSTEMS

| | |
|---|--|
| Chilled Water Flow [GPM] | |
| Chilled Water Pressure Drop @ Rated Flow [ft] | |
| Total Cooling Tower Flow [GPM] | |
| - Flow To Condenser Only [GPM] | |
| - Flow To Dump HX Only [GPM] | |
| Condenser Pressure Drop @ Rated Flow [ft] | |
| Cooling Tower Heat Rejection [MBtu/hr] | |

ELECTRICAL REQUIREMENT

| | |
|----------------------------------|--|
| Voltage Requirement | |
| Electrical Service | |
| Amperage Rating | |
| Parasitic Power Requirement [kW] | |

ACOUSTIC LEVELS [dBA @ 3 ft]

| | |
|---------------------|--|
| - with Enclosure | |
| - without Enclosure | |
| Refrigerant | |

DIMENSIONAL DATA

| | |
|--------|--|
| Length | |
| Width | |
| Height | |

WEIGHTS

| | |
|-------------------------|--|
| Rigging Weight [lb] | |
| Operational Weight [lb] | |

DRIVELINE

| | |
|------------|--|
| Engine | |
| Compressor | |

STx SERIES

| CH-150x | CH-200x |
|---------|---------|
| 150 | 200 |
| 2.6 | 2.6 |
| 1.7 | 1.6 |
| 2.2 | 2.1 |
| 1,032 | 1,526 |
| 1,012 | 1,496 |
| 7-28 | 13-28 |
| 516 | 730 |
| 214 | 229 |

| | |
|-------|-------|
| 360 | 480 |
| 9.1 | 16.2 |
| 490 | 640 |
| 450 | 600 |
| 40 | 40 |
| 13.0 | 23.1 |
| 2,418 | 3,473 |

| |
|---------------------------|
| 208-230, 50/60 Hz |
| Single Phase with Neutral |
| 30 |
| 2.2 |

| | |
|----------|----|
| 85 | 89 |
| 92 | 96 |
| HFC-134a | |

| |
|--------|
| 13'10" |
| 4'4" |
| 6'9" |

| |
|--------|
| 10,950 |
| 11,750 |

| |
|--------------------|
| TecoDrive 7400 |
| J&E Hall HS2024GED |

DTx SERIES

| CH-300x | CH-350x | CH-400x |
|---------|---------|---------|
| 300 | 350 | 400 |
| 2.6 | 2.6 | 2.6 |
| 1.7 | 1.7 | 1.6 |
| 2.1 | 2.1 | 2.1 |
| 2,157 | 2,529 | 3,052 |
| 2,115 | 2,479 | 2,992 |
| 7-28 | 13-28 | 13-28 |
| 1,032 | 1,210 | 1,460 |
| 214 | 220 | 229 |

| | | |
|-------|-------|-------|
| 720 | 840 | 960 |
| 7.2 | 9.6 | 12.6 |
| 980 | 1,130 | 1,280 |
| 900 | 1,050 | 1,200 |
| 80 | 80 | 80 |
| 12.9 | 14.1 | 18.1 |
| 5,376 | 6,136 | 6,946 |

| |
|---------------------------|
| 208-230, 50/60 Hz |
| Single Phase with Neutral |
| 40 |
| 2.7 |

| | | |
|----------|----|----|
| 88 | 89 | 92 |
| 95 | 96 | 99 |
| HFC-134a | | |

| |
|-------|
| 14'3" |
| 7'0" |
| 7'7" |

| |
|--------|
| 21,900 |
| 23,650 |

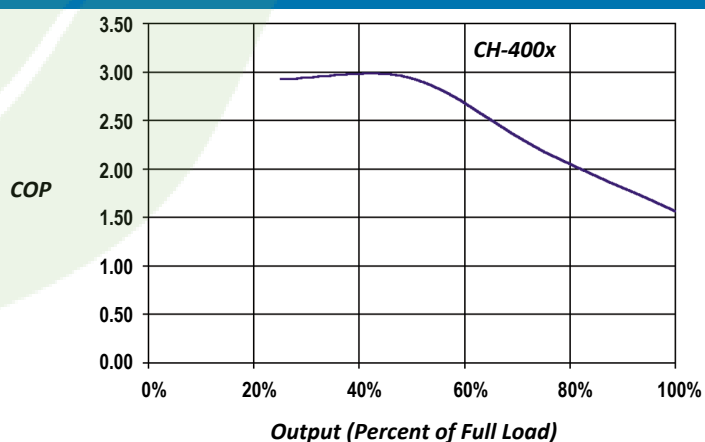
| |
|------------------------|
| TecoDrive 7400 (2) |
| J&E Hall HS2024GED (2) |


1. Specifications subject to change without notice, all specifications are $\pm 5\%$.
2. COP ratings are based upon Fuel Higher Heating Value (HHV) @ 1020 BTU/SCF

Outstanding TECOCHILL Features

- TecoDrive 7000™ natural gas engine
- Engine and exhaust heat recovery
- Single screw balance action compressor
- High efficiency flooded evaporator
- IPLV exceeding 2.5
- Footprint equivalent to electric chillers
- Variable engine speed operation for excellent part load performance and longer life
- TecoNET™ microprocessor-based control system with precise PID control for fully automatic operation, continuous system monitoring, digital display, fault diagnostics and tie-in to an energy management system
- Remote Monitoring Control System (RMCS) that permits remote real-time monitoring, data acquisition and system control by telephone or internet

TYPICAL TECOCHILL PART-LOAD PERFORMANCE



Tecogen 
Advanced Modular CHP Systems



Made In The USA

TECOGEN® TECOCHILL® and TecoDrive™ are trademarks of Tecogen