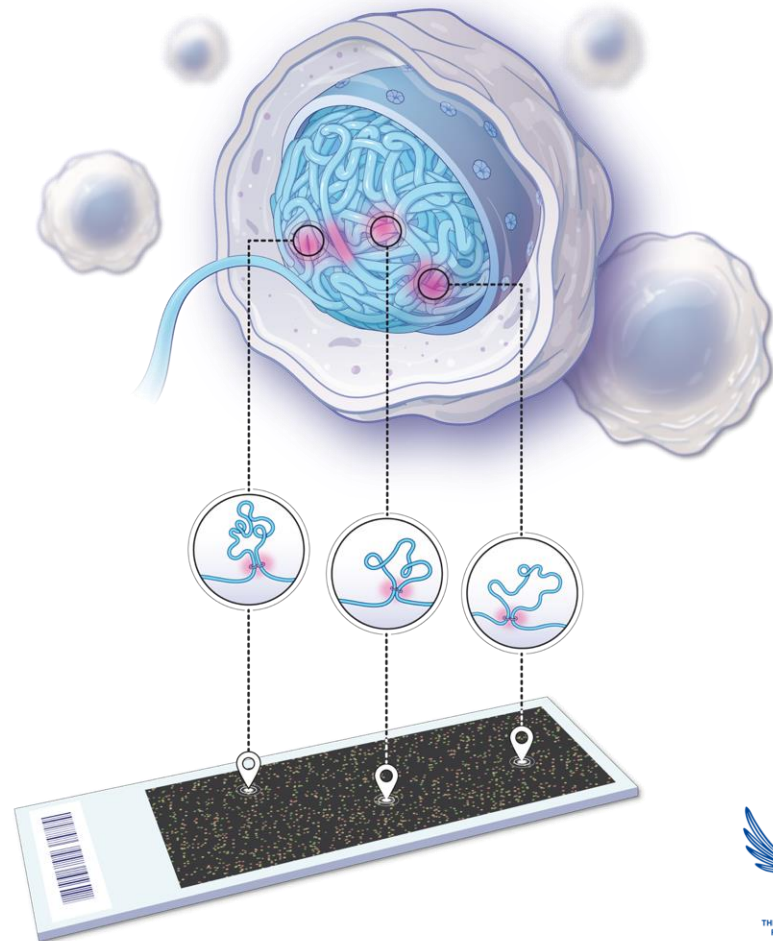




Commercializing 3D Gene Regulation for Precision Medicine with EpiSwitch®

August, 2023

www.myOBDX.com



Corporate Presentation Disclaimer

The information contained in these slides and this presentation is being supplied to you by Oxford Biodynamics plc (the "**Company**") solely for your information and may not be reproduced or redistributed in whole or in part to any other person. For the purposes of this document, the presentation that follows (the "**Presentation**") shall mean and include the slides that follow, the oral briefing provided by the Company in connection with the slides, the question-and-answer session that follows that oral presentation, hard copies of this document and any materials distributed at, or in connection with the Presentation, or any of them. The Presentation is strictly confidential, may not be distributed to the press or any other person, may not be copied or reproduced in any form and may not be published, in whole or in part, for any purpose. Failure to comply with this restriction may, inter alia, constitute a violation of applicable securities laws.

The Presentation does not constitute a recommendation regarding the ordinary shares of the Company ("**Ordinary Shares**"). This Presentation does not constitute, and the Company shall not be construed as giving investment, legal or tax advice to any recipient. Recipients of the Presentation should conduct their own investigation, evaluation and analysis of the business and data described therein. The Presentation does not constitute or form part of any offer for sale or subscription for any offer to buy or subscribe for any securities nor shall it or any part of it form the basis of or be relied upon in connection with any contract or commitment whatsoever. There shall not be any sale of any securities in any jurisdiction in which such offer, solicitation or sale would be unlawful prior to registration or qualification under the relevant securities laws of any such jurisdiction. The Presentation does not purport to be a prospectus, to be complete or to contain all of the information you may desire.

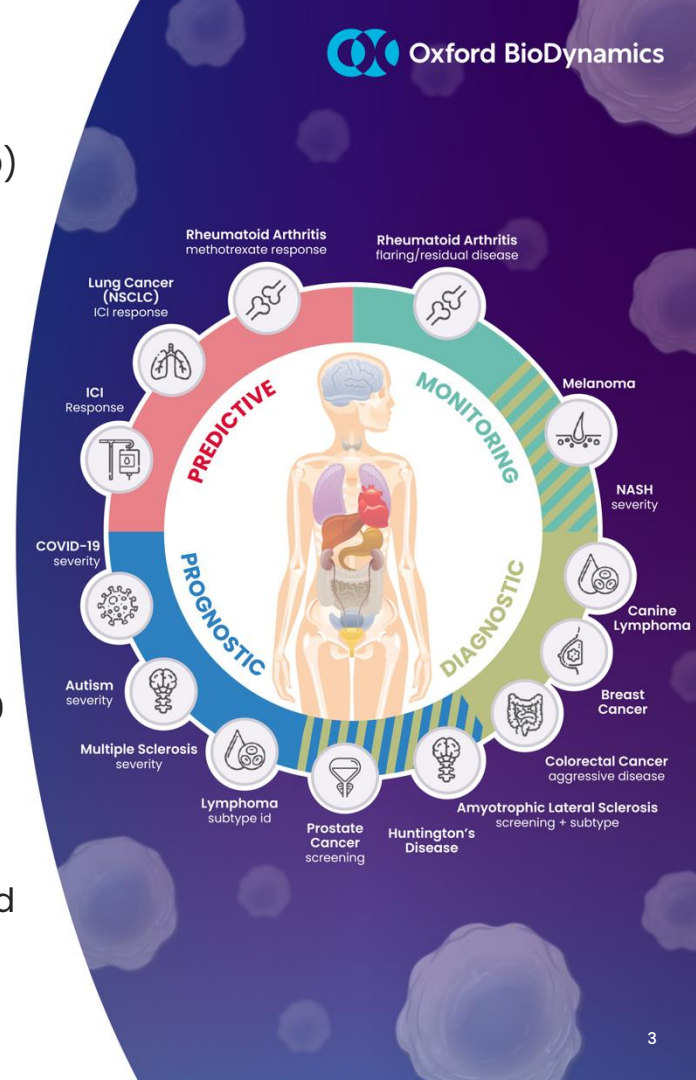
Whilst all reasonable care has been taken to ensure that the facts stated in the Presentation are accurate and that any forecasts, opinions and expectations contained therein are fair and reasonable, no reliance whatsoever should be placed on them. Accordingly, no representation or warranty express or implied is made as to the fairness, accuracy, completeness of the Presentation and each recipient of the Presentation must make its own investigation and assessment of the matters contained therein. No responsibility or liability whatsoever is accepted by any person for any loss howsoever arising from any use of, or in connection with, the Presentation or its contents or otherwise arising in connection therewith. In issuing this Presentation, the Company does not undertake any obligations to update or to correct any inaccuracies which may become apparent in these presentation materials. This Presentation is being supplied to you for your own information and may not be distributed, published, reproduced or otherwise made available to any other person, in whole or in part, for any purposes whatsoever. In particular, it should not be distributed to or otherwise made available to persons in any jurisdiction where such distribution or availability may lead to a breach of any law or regulatory requirements. This Presentation has not been approved for any legislative, regulatory or other purpose (and in particular have not been approved by an authorised person pursuant to section 21 of the United Kingdom's Financial Services and Markets Act 2000 or any analogous regulation in any other jurisdiction). The Presentation is being distributed only to and is only directed at persons to whom it may be lawfully distributed (all such persons together being referred to as "**Relevant Persons**"). Any person who is not a Relevant Person should not act or rely on the Presentation or any of its contents. By accepting this Presentation and not immediately returning it, the recipient is deemed to represent and warrant that: (i) they are a Relevant Person entitled to receive the Presentation; and (ii) they have read, agree and will comply with the contents of this notice.

This Presentation may contain forward-looking statements that reflect the Company's current expectations regarding future events. These statements may include the words "believe", "expect", "anticipate", "intend", "plan", "estimate", "project", "will", "may", "targeting" and similar expressions as well as statements other than statements of historical facts including, without limitation, the Company's liquidity and results of operations as well as the Company's working capital requirements and future capital raising activities. Forward-looking statements involve risks and uncertainties. Actual events could differ materially and adversely from expectations embodied in forward-looking statement and depend on a number of factors, some of which may be beyond the Company's control. Such forward-looking statements have not been independently verified. Given these uncertainties, one should not place undue reliance on these forward-looking statements. The forward-looking statements in this Presentation speak only as of the date of this Presentation and the Company does not assume any obligation to update or revise any forward-looking statements, whether as a result of new information or future events or otherwise, unless it is required to do so by law.

The disclaimer will not exclude any liability for, or remedy in respect of, fraudulent misrepresentation. By accepting this Presentation and not immediately returning it you agree to be bound by and accept these terms.

Snapshot of OBD and Where We are Today

- **Founded** in 2007 out of University of Oxford, listed in 2016 (AIM:OBD)
- **A global leader** in 3D genomics with proprietary automated fast-turnaround blood testing technology platform developed over 16 years
- **Large addressable markets:** can impact outcomes in many diseases
- ✓ **Commercial progress** in 2022 with the launch of current flagship product: Checkpoint inhibitor Response Test (CiRT™)
- ✓ **Early adopter traction** in 2022 (peer-to-peer sales approach)
- ✓ **Unique CPT/PLA code** received in record time, coded by Oct1
- ✓ **Reimbursement** achieved at expected levels – ASP \$2000 – \$2500
- ✓ **Large sales growth** in Q1 and Q2 sales 2023
- ✓ **Record monthly sales** recorded in March, April, May and June
- ✓ **Prostate Screening EpiSwitch** (PSE test) commercial launch by end of year



Oxford BioDynamics (AIM:OBD)

3D Genomics Experts

- Advancing personalized healthcare by developing and commercializing precision medicine blood tests for life-changing diseases
- Deep pipeline of deployable molecular diagnostic tests
- Patent estate of 18 patent families
- Member of Foundation of NIH Biomarker Steering Committees
 - **Oncology, Immunology & Inflammation, Neuroscience and Metabolics**
- Awarded 2 PACT Grants to bring EpiSwitch® platform as the industry standard for 3D genomics
 - **2021 Analysis of primary and acquired resistance to ICI therapy**
 - **2023 IO-triggered Hyper-Progressive Disease (HPD)**



Genentech



EMD
SERONO



Mitsubishi Tanabe Pharma

Biogen.



MAYO CLINIC



MASSACHUSETTS
GENERAL HOSPITAL

Global Offices & Facilities



UK | Corporate HQ, Tech Centre
Oxford, UK

USA | Oxford BioDynamics, Inc.
Gaithersburg, MD USA
Commercial Team

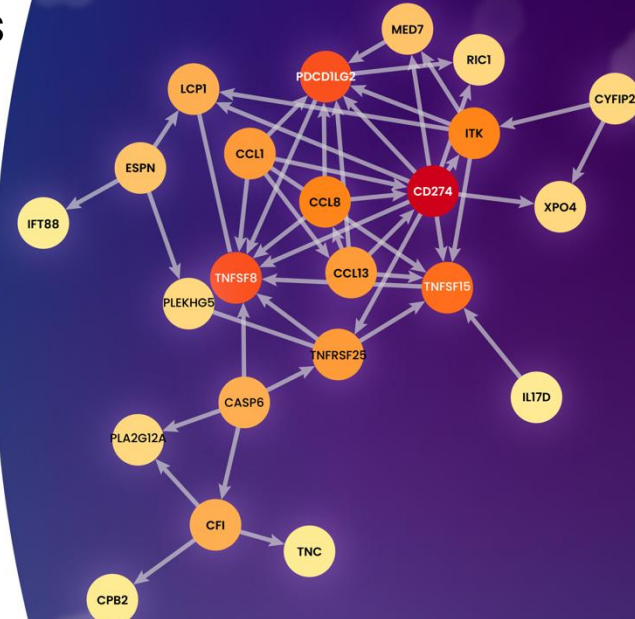
USA | Oxford BioDynamics, Inc.
Frederick, MD USA
Clinical Testing Lab

Asia | Reference lab
Penang, Malaysia

Oxford BioDynamics (AIM:OBD)

World Leading 3D Genomics Technology

- Focus on 3D Genomics links to clinical outcomes
- EpiSwitch KnowledgeBase™
 - Largest curated 3D genomics database
 - 15,000+ samples, 30+ diseases, 800 million datapoints
- Proprietary bioinformatic tools for 3D genomic analyses
 - ✓ 3D Genomic EpiSwitch® blood-based biomarkers
 - ✓ Checkpoint Inhibitor Response Test (CiRT)
 - ✓ Prostate Screening EpiSwitch (PSE) Test
 - ✓ Future pipeline includes Colorectal/Bowel Cancer
 - ✓ and Veterinary Medicine Products in Development



Bringing a New Dimension to the Genomics Space & Precision Medicine

1

We have mapped the 3D genome – 1.2 million critical regulatory anchor points

2

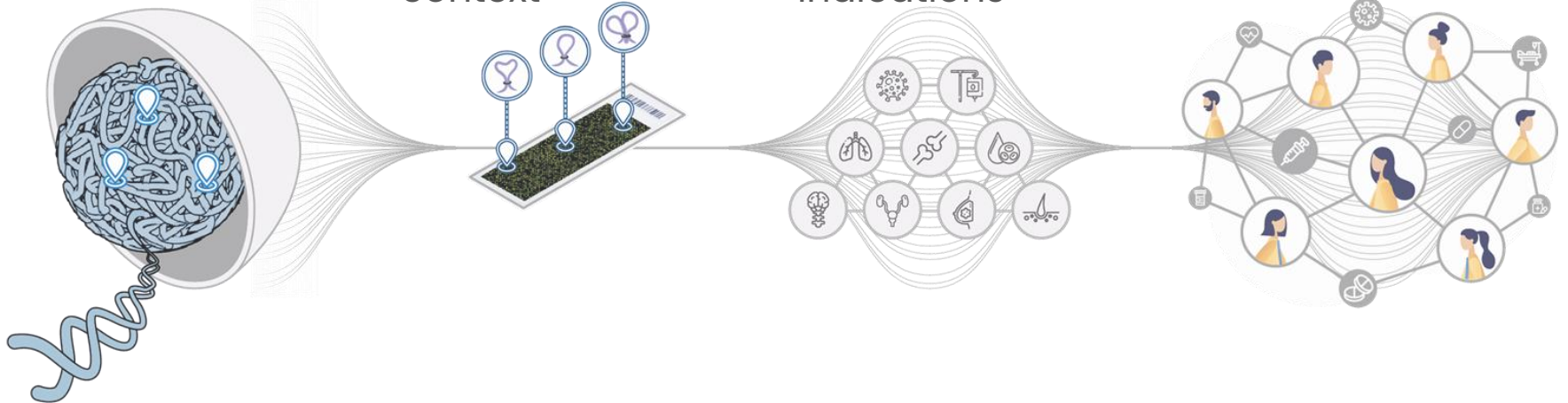
EpiSwitch® array enables profiling of the 3D human genome in a clinically relevant context

3

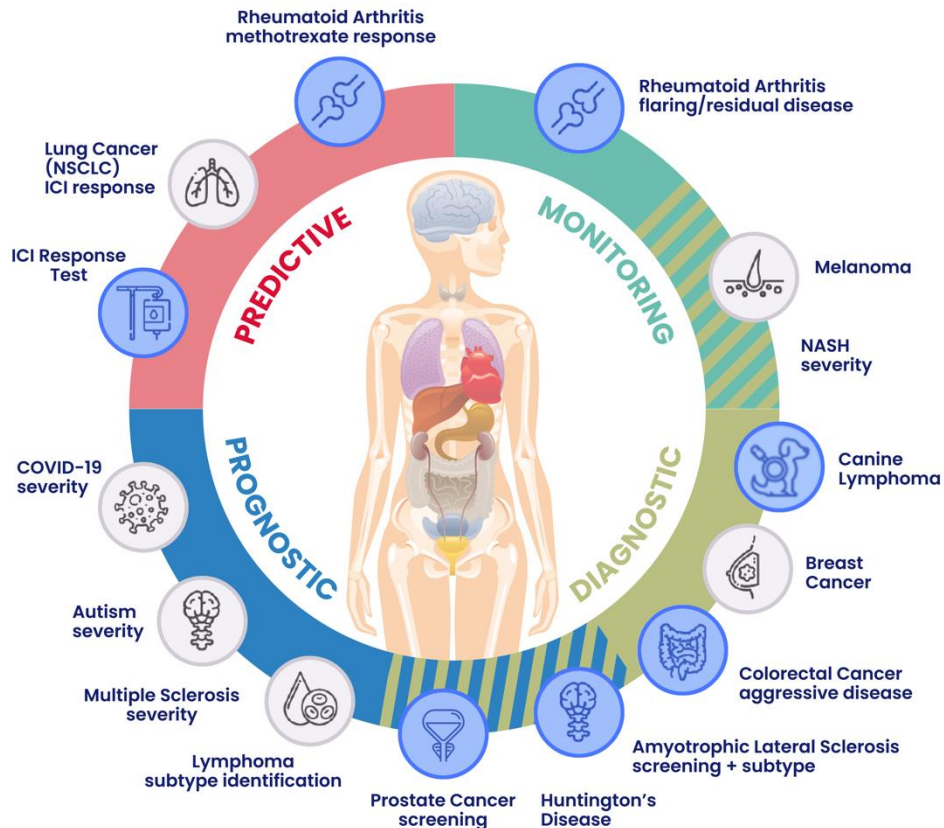
World's largest 3D genomic knowledgebase – maps for 30+ human clinical indications

4

Powerful molecular tests – precision medicine



Deep Pipeline of Blood Tests Moving Towards Clinical Testing in Large Addressable Markets



PRODUCT DEVELOPMENT PORTFOLIO

EPISWITCH® TEST PRODUCTS

THERAPEUTIC AREA



Prostate Cancer

Blood-based molecular diagnostic screening test for early detection and staging of Prostate Cancer
 - Ongoing comparative study screening patients with EpiSwitch, alongside other methodologies e.g., PSA tests, MRI, ultrasound.

Oncology



Colorectal/bowel cancer

Blood-based molecular diagnostic screening test for early detection and staging of CRC

Oncology



Veterinary Medicine

Diagnostic test for lymphoma in dogs
 OBD is continuing to expand to other dog blood cancers & soft tissue tumors (lymphomas, leukaemias, sarcomas)

Animal Health



Rheumatoid Arthritis (RA)

Predict response to methotrexate (MTX) therapy
 BioFlare - Assess flaring/residual disease monitoring

Inflammation



Amyotrophic Lateral Sclerosis (ALS)

Diagnostic & prognostic test
 (Currently part of US trial sponsored by Mitsubishi TPA)

CNS/Neurological

Technology Platform – EpiSwitch® Clinical Assay (CiRT)

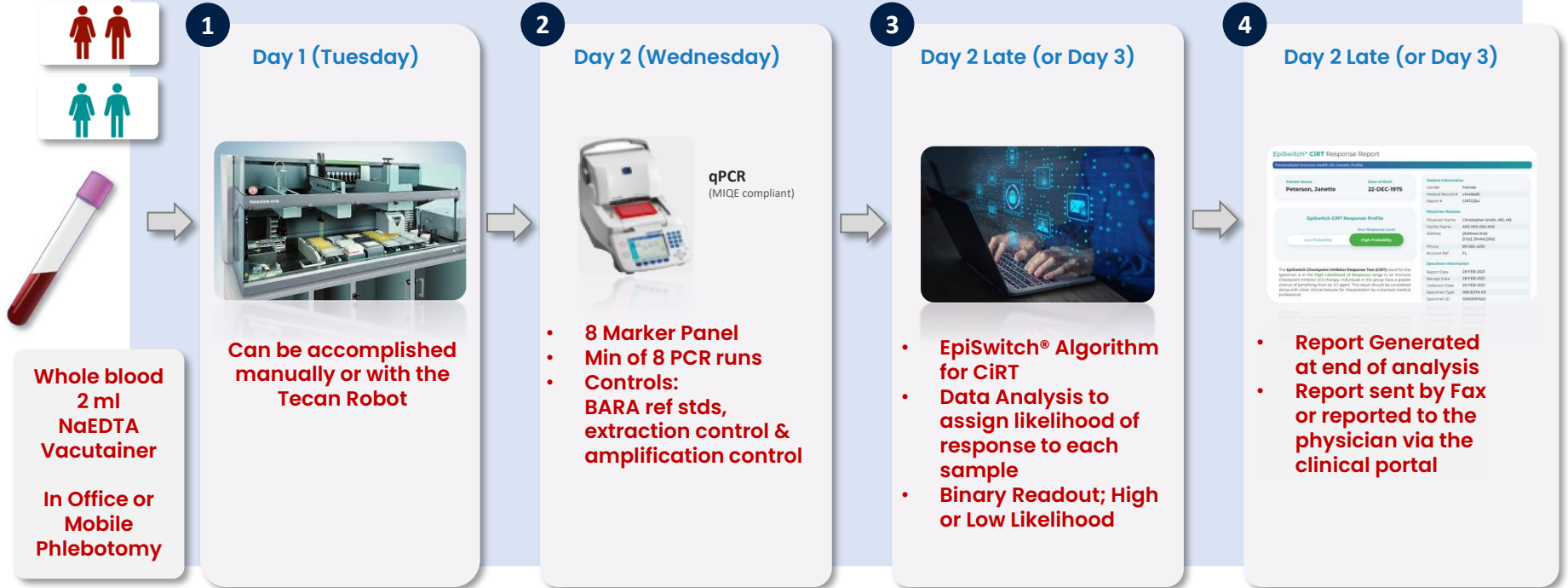
Sampling

Extraction

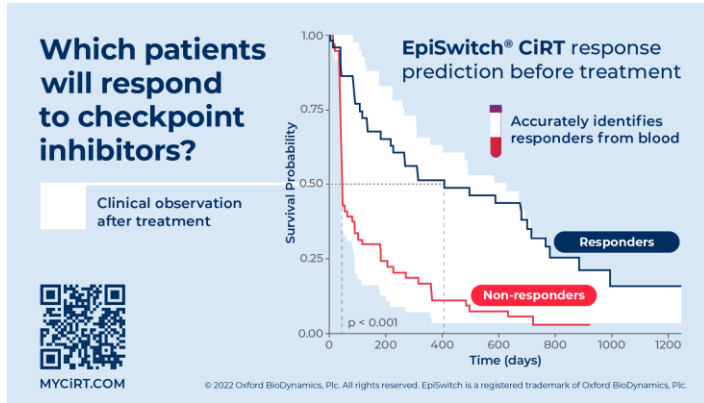
Amplification

Analysis

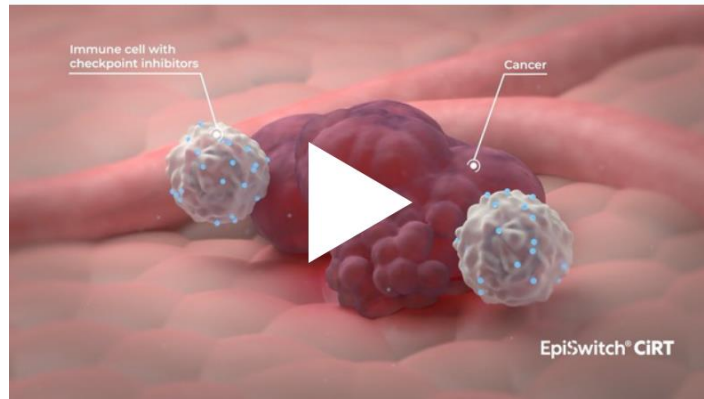
Clinical Report



EpiSwitch® CiRT – Clinically Validated Fast-Turnaround Blood Test



- ❖ The only commercially available predictive blood test that determines a patient's most likely response to checkpoint inhibitors.
- ❖ CiRT is fast, accurate, and easily identifies an individuals most likely response to checkpoint inhibitor immunotherapy using a routine blood test.



Home | About | Contact Us

EpiSwitch® CiRT

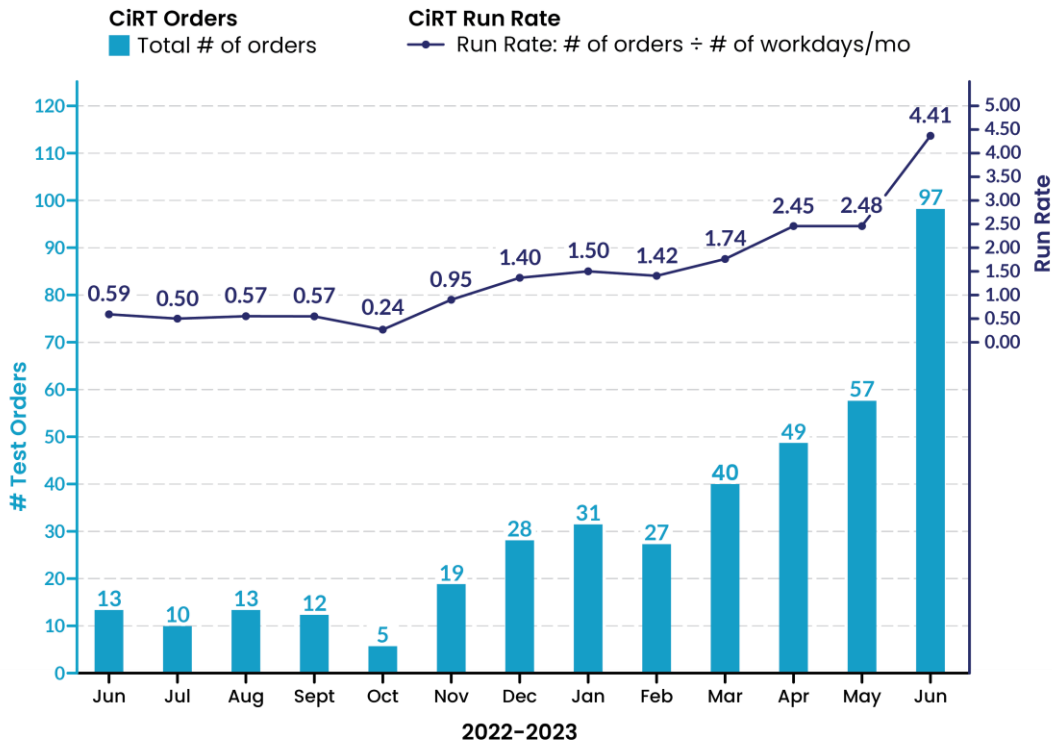
Benefits | Sample Report | Results | Guide | Offer the Test | FAQ

Only one test predicts how a patient will respond to immune checkpoint-inhibitor (ICI) therapies:

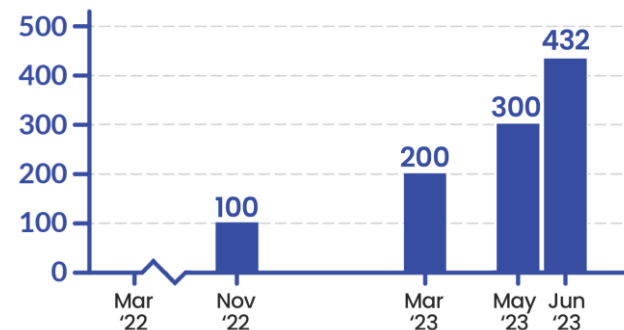
EpiSwitch Checkpoint-inhibitor Response Test (CiRT)

[OFFER THE TEST](#)

Commercial Update: CiRT Sales Growth

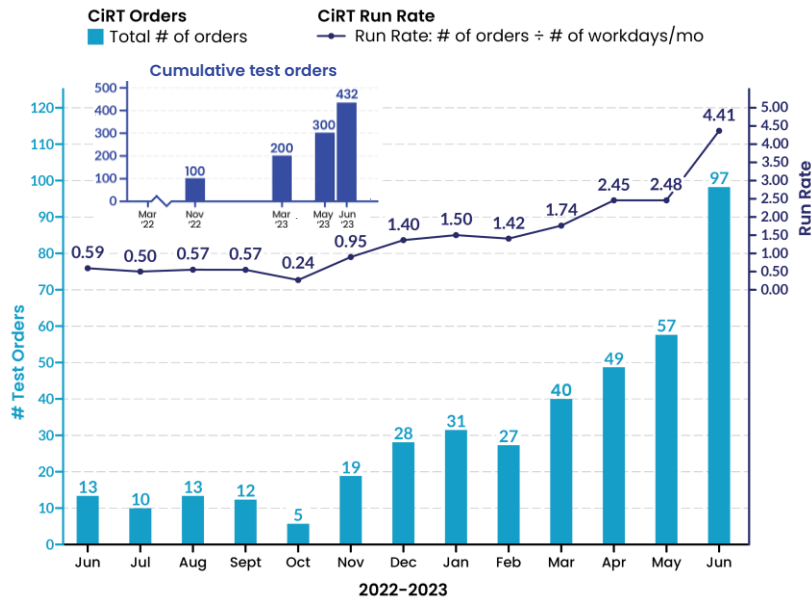


Cumulative test orders



Sales Momentum

Now Moving into Peer-to-Peer (P2P) Sales Stage



This week we kicked off a series of clinical advisory board meetings from New York to Florida along the east coast. We're discussing the challenges oncologists face using **#immunotherapy** and how **EpiSwitch CiRT** can help navigate treatment decision-making. Honored and grateful to receive advice from key opinion leaders at **MedStar Health, American Oncology Network, LLC, Luminis Health**, and more. **#oncology**



5 Clinical Advisory Boards since May 20th:

- **2 Florida**
- **2 DMV**
- **1 NYC**

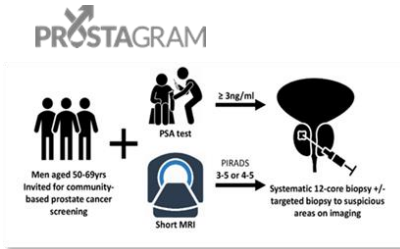
Doctor engagement: P2P

- April - 27 docs; June to date - 47 docs

Prostate Screening EpiSwitch (PSE) Test will be the next commercial launch

The Prostate Screening EpiSwitch® (PSE) Test

- Prostate cancer (PCa) occurs in one out of eight men during their lifetime and it is often diagnosed late
- The widely used prostate-specific antigen (PSA) blood test is inaccurate, with low positive predictive value (PPV 14–25%) which means a high level of false positives
- This results in many unnecessary biopsies in men. Up to 75% of men biopsied **do not** have cancer
- Data from the Prostagram trial published in the high-impact, peer-reviewed journal *Cancers* shows OBD's new PSE blood test is rapid, minimally invasive, accurate and has high predictive value



- PROSTAGRAM NHS study, 109 patients**
- Imperial College NHS Trust, 38 patients**
- Multivariate non-invasive classifier PSE (PSA and EpiSwitch):
 - **PPV 0.93**
 - **NPV 0.95**
- Currently PSA alone: PPV **0.14**, NPV 0.93
- Rapid, accurate, non-invasive**

- Accuracy (94%), PPV (93%), and NPV (95%) reported
- This could reduce the number of unnecessary biopsies by 75% and reassure men that they are clear
- In US 47M men aged 50–74, and 25M PSA tests p.a.. In UK 10M men aged 50–74 (<10% tested)

Great media interest generated by publication



Article

Circulating Chromosome Conformation Signatures Significantly Enhance PSA Positive Predicting Value and Overall Accuracy for Prostate Cancer Detection

Dmitri Pchejetski ^{1,*}, Ewan Hunter ², Mehroush Dezfouli ², Matthew Salter ², Ryan Powell ², Jayne Green ², Tarun Naithani ², Christina Koutsohanasi ², Heba Alshaker ¹, Jiten Jaipuria ^{3,4}, Martin J. Connor ³, David Eldred-Evans ³, Francesca Fiorentino ^{3,5}, Hashim Ahmed ³, Alexandre Akoulitchev ² and Mathias Winkler ^{3,*}

NATIONAL PRESS
covered on front pages

> 80 NEWS SITES

- The Daily Telegraph**: New prostate test may cut need for biopsies. **0.7M daily print readers**
- Daily Mail**: The blood test that's 92% accurate at spotting signs of prostate cancer. **2.2M daily print readers**
- Evening Standard**: New blood test for prostate cancer 92% accurate at detecting disease. **0.9M daily print readers**
- The Herald**: Prostate blood test for prostate cancer is 94% accurate, researchers claim. **2.1M monthly readers**
- DAILY EXPRESS**: Spot-on prostate cancer test hope. **0.9M daily print readers**
- INDEPENDENT**: Scientists create 'impressive' new blood test for prostate cancer that is 94% accurate. **2.1M monthly readers**
- SUNDAY POST**: New blood test for prostate cancer is 94% accurate, researchers say.
- yahoo!**: New prostate cancer test could spare men from needless biopsies.
- NS MEDICAL DEVICES**: Oxford BioDynamics demonstrates PSE test's potential in prostate cancer screening.



Oxford BioDynamics Plc

2,036 followers

2w · 5

Exciting to see the EpiSwitch® PSE prostate screening test featured on BBC Morning Live during a discussion with Dr. Ranj Singh! We're working hard to accelerate the launch of the PSE clinical test for availability by the end of 2023. Watch the interview here: <https://lnkd.in/gA4YPJu8>.

#OBD #MensHealthWeek #ProstateCancer

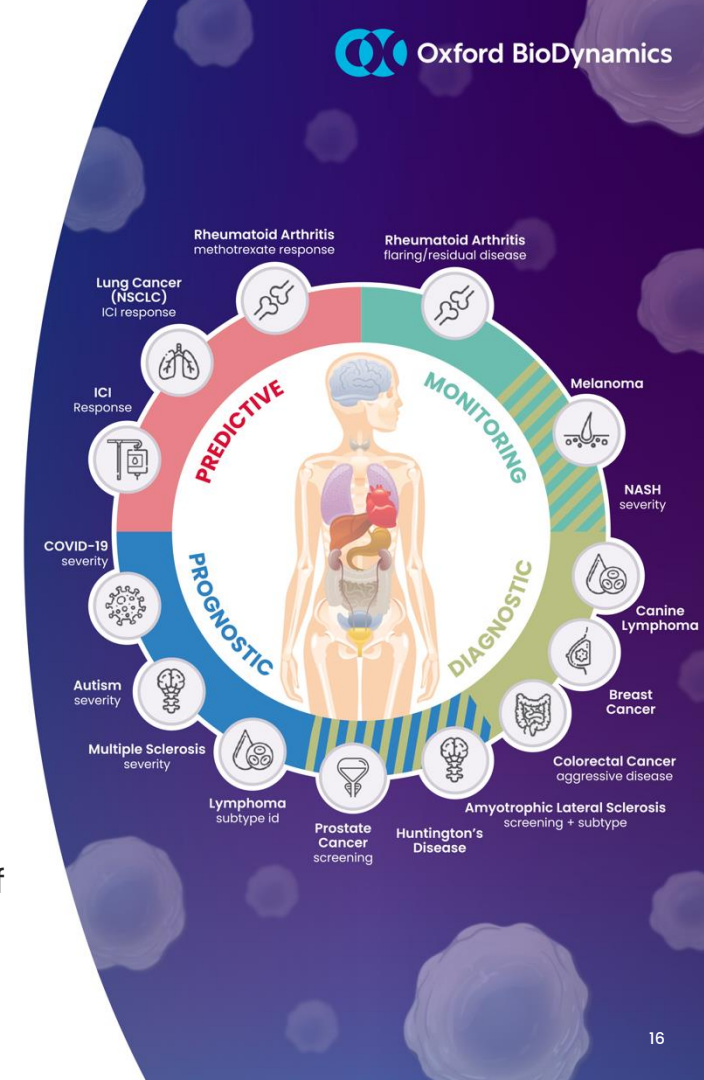


Bringing the PSE test online in US and UK: *July Update*

- **Stage 1:** (target April 15th completion)
 - Finish Product Development – Oxford Core: **COMPLETE**
 - Lease US lab space / Equip and bring clinical testing online: **LEASE & EQUIP COMPLETE**
 - Hire and train 5 lab techs: **2 Lab Techs Hired, Training Complete**
 - Establish UK clinical lab space – existing infrastructure and staff: **ONGOING**
 - Add quality engineer / clinical lab supervisor / part time medical director: **R. Heaton for US**
- **Stage 2:** (target Q4 2023 completion)
 - CLIA Laboratory ID: 21D2284653 received 3 July **Complete**
 - Clinical LDT validation of PSE in US: **In Process**
 - Hire initial sales force US / UK: **TBD**
 - UK lab test validation (online end of Q4): **Planning**
 - US and UK Quality manuals, IT setup: **US Quality & IT Setup Complete**
 - File for UK lab license and US CLIA certification: **US CLIA Application Submitted June 26, 2023**
 - File CPT dossier April 1: **PSE CPT PLA Application filed July 5 Complete**

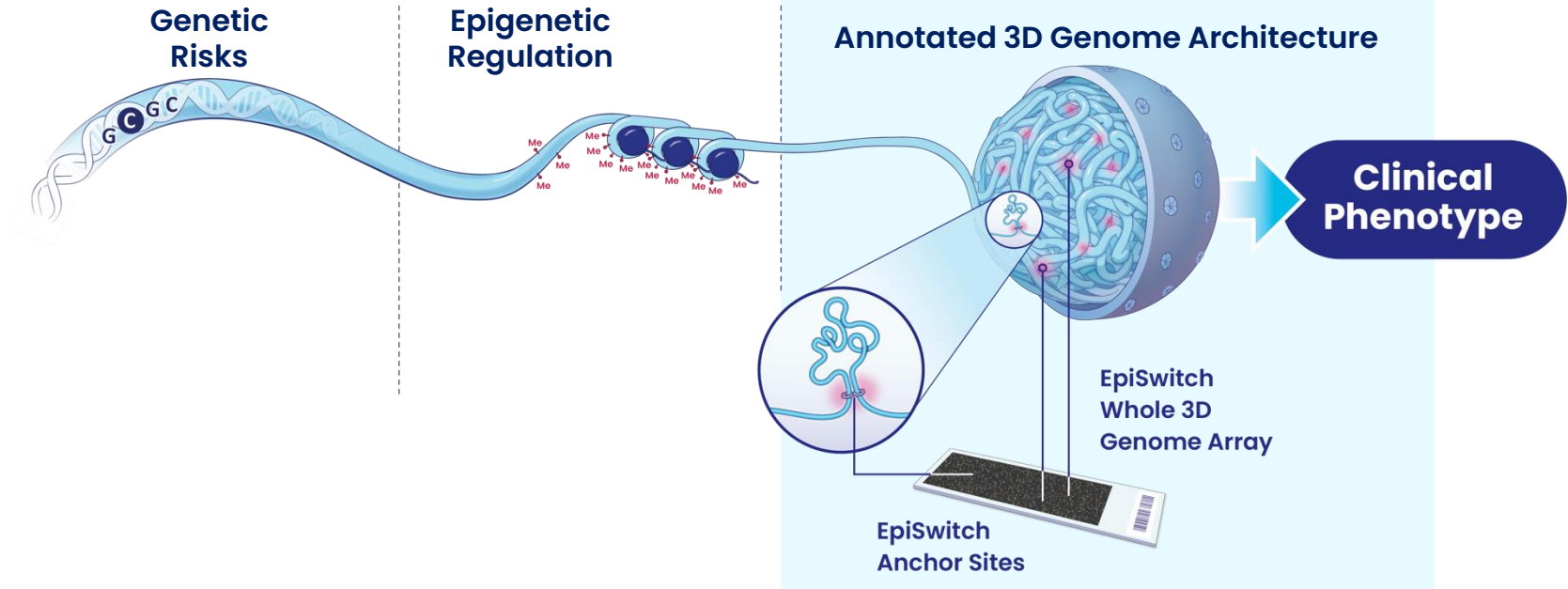
Summary of Where We are Today

- A global leader in 3D genomics with proprietary automated fast-turnaround blood testing technology platform
- Large addressable markets: potential to impact outcomes in many diseases
- ✓ Commercial progress in 2022 with the launch of current flagship product: Checkpoint inhibitor Response Test (CiRT™)
- ✓ Early adopter traction in 2022 (peer to peer sales approach)
- ✓ Unique CPT/PLA code received in record time, coded by Oct 1
- ✓ Reimbursement achieved at expected levels – ASP \$2000 – \$2500
- ✓ Large sales growth in Q1 and Q2 sales 2023
- ✓ Record monthly sales recorded in March, April, May and June
- ✓ Prostate Specific EpiSwitch (PSE test) commercialization by end of year



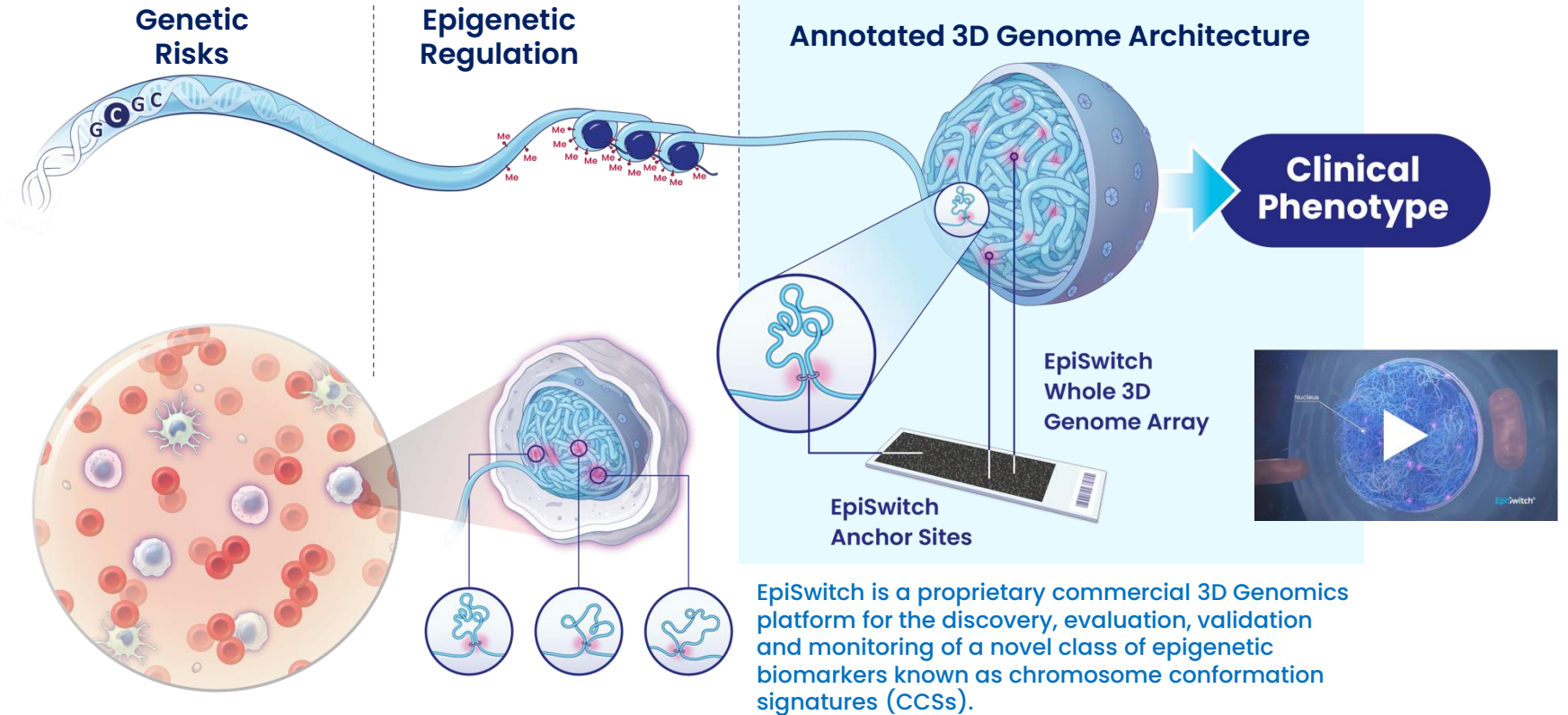
Why 3D Genomics?

EpiSwitch® As A Tool for Clinical Biomarker Development



EpiSwitch is a proprietary commercial 3D Genomics platform for the discovery, evaluation, validation and monitoring of a novel class of epigenetic biomarkers known as chromosome conformation signatures (CCSs).

EpiSwitch® As A Tool for Clinical Biomarker Development



3D genome is the molecular regulatory network underlying cellular phenotypes