

Heart  Beam™

Total Heart Intelligence... Wherever You Are

ADVANCED CARDIAC INTELLIGENCE PLATFORM | 25 PATENTS | FDA CLEARED*

INVESTOR PRESENTATION June 2026

Heart  Beam

*FDA cleared for arrhythmia assessment only.

NASDAQ: BEAT

Disclaimer

This presentation contains forward-looking statements. All statements other than statements of historical fact contained in this presentation, including statements as to the Company's future results of operations and financial position, planned products and services, business strategy and plans and objectives of management for future operations, are forward-looking statements.

These statements involve known and unknown risks, uncertainties, assumptions and other factors that may cause the Company's actual results, performance or achievements to be materially different from any future results, performance or achievements expressed or implied by the forward-looking statements.

In some cases, you can identify forward-looking statements by terms such as "may," "will," "should," "expects," "plans," "anticipates," "could," "intends," "target," "projects," "contemplates," "believes," "estimates," "aims," "predicts," "potential," "seeks," "attempts," "poised" or "continues" or the negative of these terms or other similar words. These statements are only predictions.

The Company has based these forward-looking statements largely on its current expectations and projections about future events and financial trends that it believes may affect its business, financial condition and results of operations. Also, these forward-looking statements represent the Company's estimates and assumptions only as of the date of this presentation. The Company assumes no obligation to update any forward-looking statements after the date of this presentation.

This presentation also contains estimates and other statistical data made by independent parties and by the Company relating to market size and growth and other industry data. This data involves several assumptions and limitations, and you are cautioned not to give undue weight to such estimates. The Company has not independently verified the statistical and other industry data generated by independent parties and contained in this presentation and, accordingly, it cannot guarantee their accuracy or completeness.

In addition, projections, assumptions and estimates of its future performance and the future performance of the industries in which it operates are necessarily subject to a high degree of uncertainty and risk due to a variety of factors. These and other factors could cause results to differ materially from those expressed in the estimates made by independent parties and by the Company. For additional risks and uncertainties that could impact the Company's forward-looking statements, please see disclosures contained in HeartBeam's public filings with the SEC, including the "Risk Factors" in HeartBeam's Annual Report on Form 10-K, and which may be viewed at www.sec.gov.

The HeartBeam System received FDA clearance for arrhythmia assessment in December 2024. The 12-Lead ECG synthesis software for arrhythmia assessment received FDA clearance in December 2025. Refer to the Company's Cleared Indications for Use at <https://www.heartbeam.com/indications> for details on the intended use of its technology.

A photograph of a hospital room. In the foreground, a gurney with a white sheet is positioned. To the left, an ECG machine sits on a cart. The background shows medical equipment on the wall, a trash can, and a counter with cabinets.

THE GAP IN CARDIAC DETECTION

Heart attack detection requires 12-Lead ECG data, which is primarily available in clinical settings.

Consumer and wearable ECG devices do not provide sufficient spatial orientation for ischemia detection. As a result, clinicians lack reliable data when symptoms occur outside the hospital.

Patient Delay is the Major Driver Behind the #1 Cause of Death

Treatment time in hospital is optimized. Patient delay happens before arrival.



Patients Delay 3+ Hours Before Taking Action

Uncertainty Delays Action

PATIENT OUTCOME

Every **30 Minute** Delay Increases:

8.7% ▲
Heart failure risk

7.5% ▲
1-year mortality

COSTLY COMPLICATIONS

Heart failure drives:

\$30,000 annual cost per patient

5-year avg. life expectancy

Decision to call 911

Treatment Time is Optimized Once the Patient Reaches the Hospital

Rapid 12-Lead ECG in guidelines



Rapid EMS activation and transport



Streamlined emergency room triage

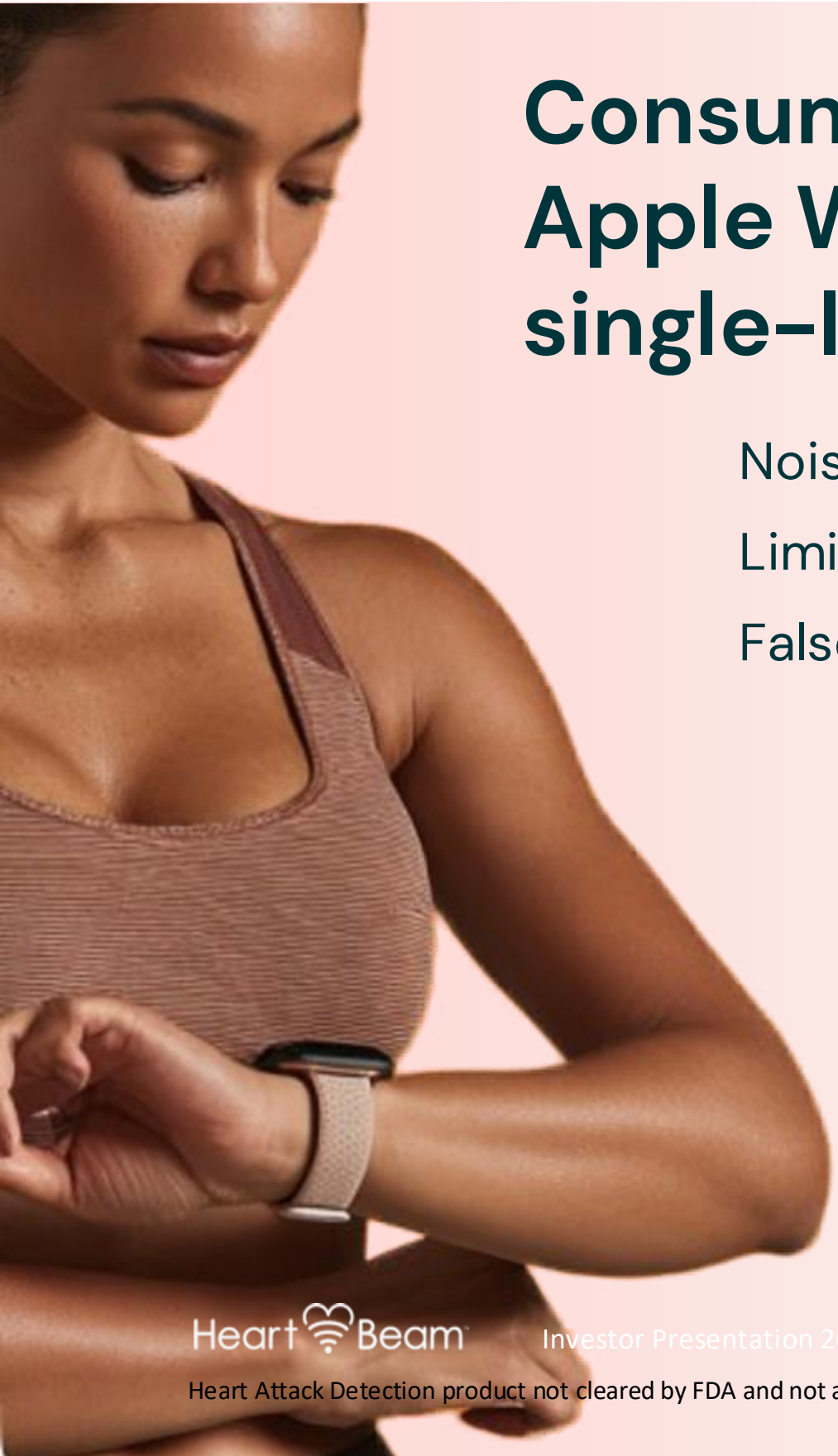


Immediate stenting with door-to-balloon time under 90 minutes

There is no dependable solution to reduce this pre-hospital delay.

Current at-home ECG tools cannot reliably detect heart attacks.

Consumer ECGs Have Limited Capabilities & Traditional ECGs are Limited to Healthcare Facilities



Consumer wearables like Apple Watch use only a single-lead ECG

- Noisy signals
- Limited diagnostic capabilities
- False positives



12-Lead ECGs: Gold standard that's trapped in the hospital

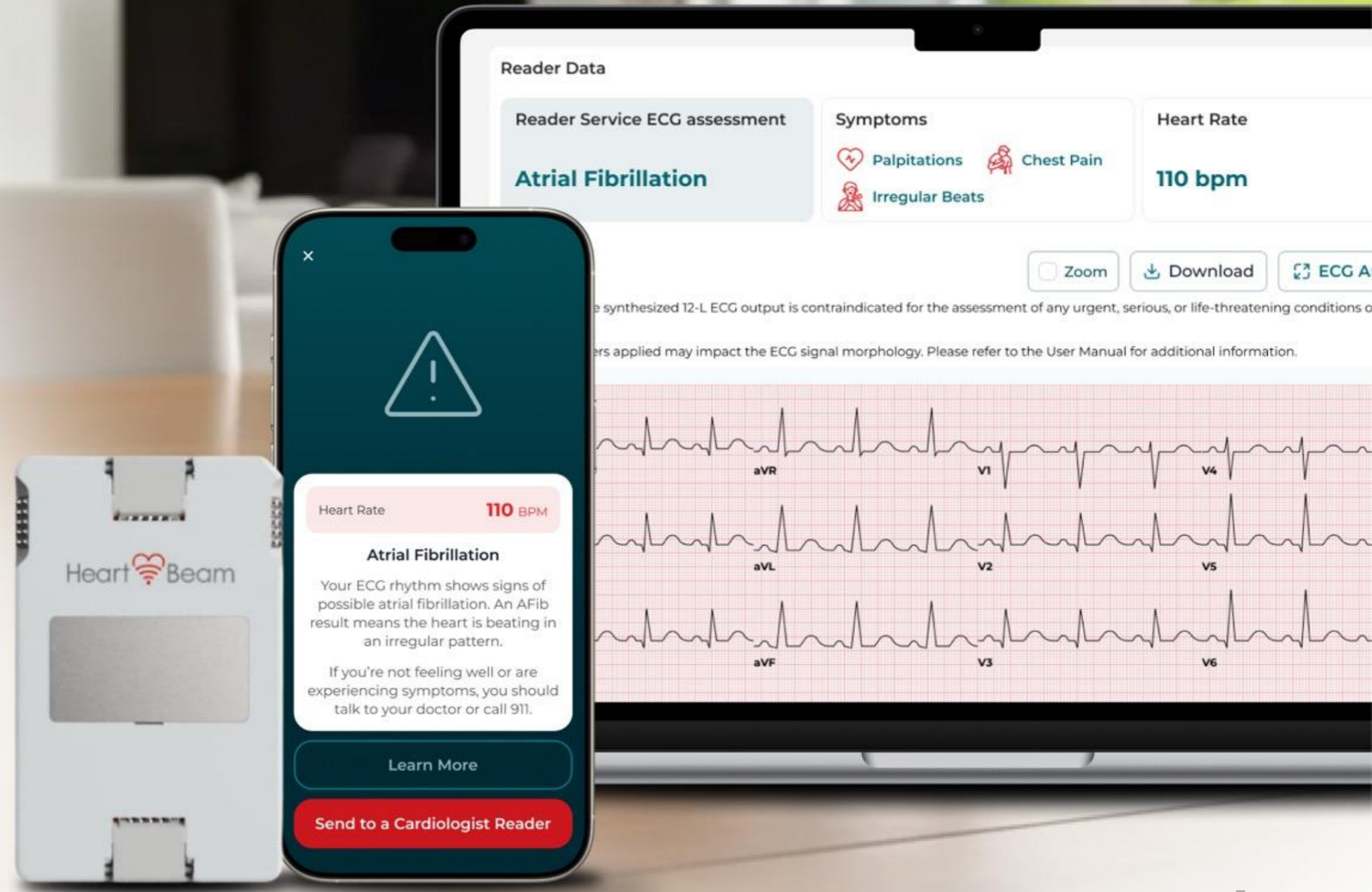
- Bulky equipment and wires
- Requires trained operators
- Only in hospitals or ERs
- Patient immobilized during testing
- Not available when symptoms strike

HeartBeam Brings a Clinical-Grade 12-Lead ECG Into the Home

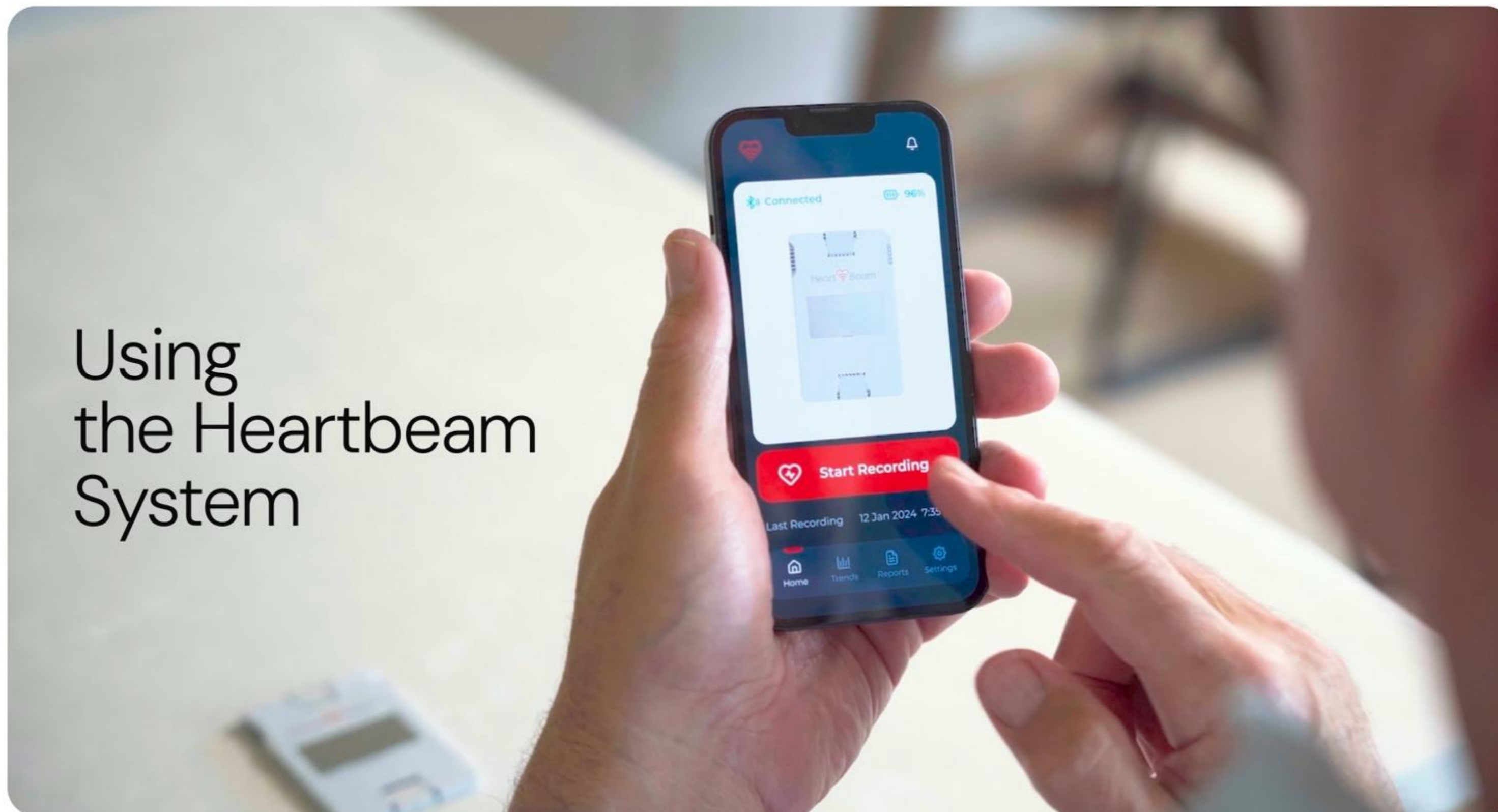
BRINGING CARE BEYOND THE HOSPITAL

A Cardiac Intelligence Platform...Anywhere. Powered by FDA-cleared ECG technology.

HeartBeam is the **first ever cable-free, synthesized, 12-Lead ECG platform for arrhythmia assessment**, delivering clinical-grade insights in real time, wherever symptoms occur.



Using the Heartbeam System



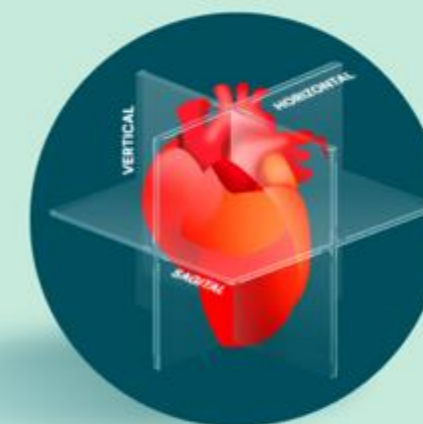
[Click here to watch the demo video](#)



This Platform Addresses
Tens of Millions of Patients
Across Multiple Segments

**One platform.
Two form factors.
Shared cardiac
intelligence.**

CORE PLATFORM



**PATENTED 3D SIGNAL
COLLECTION TECHNOLOGY**

FORM FACTORS

**HEARTBEAM
SYSTEM***
CABLE-FREE 12-LEAD ECG
FOR AT-HOME USE



**ON-DEMAND
12-LEAD PATCH**
CONTINUOUS
1-LEAD → 12-LEAD
ON DEMAND



APPLICATIONS ENABLED

ARRHYTHMIA



**HEART ATTACK
DETECTION**



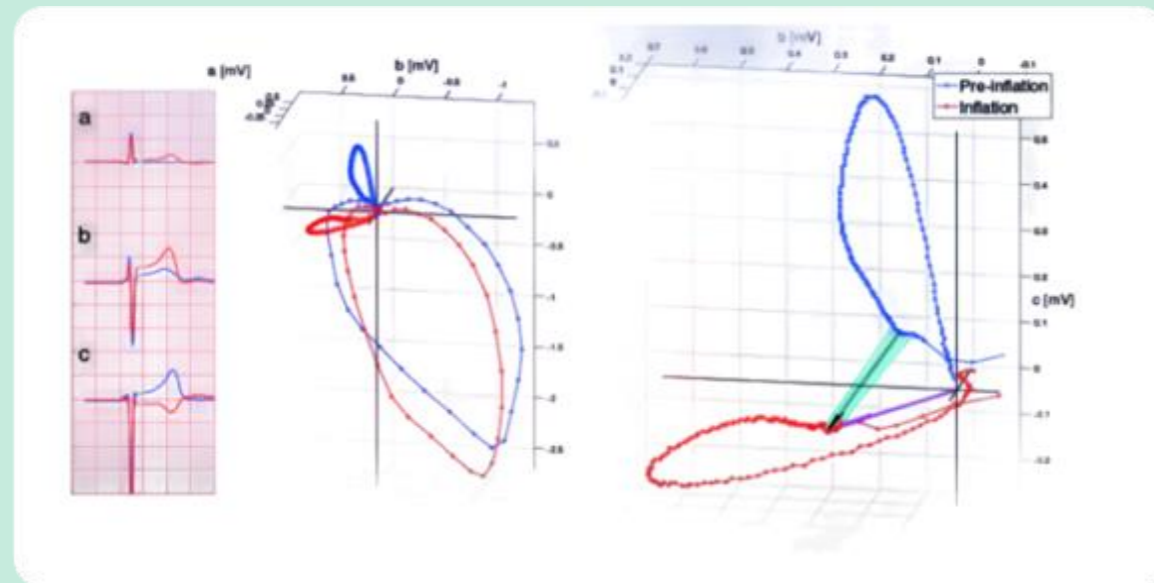
**PERSONALIZED AI
ALGORITHMS**



Fundamental Advances Covered by 25 Patents Enables HeartBeam's Unique Approach

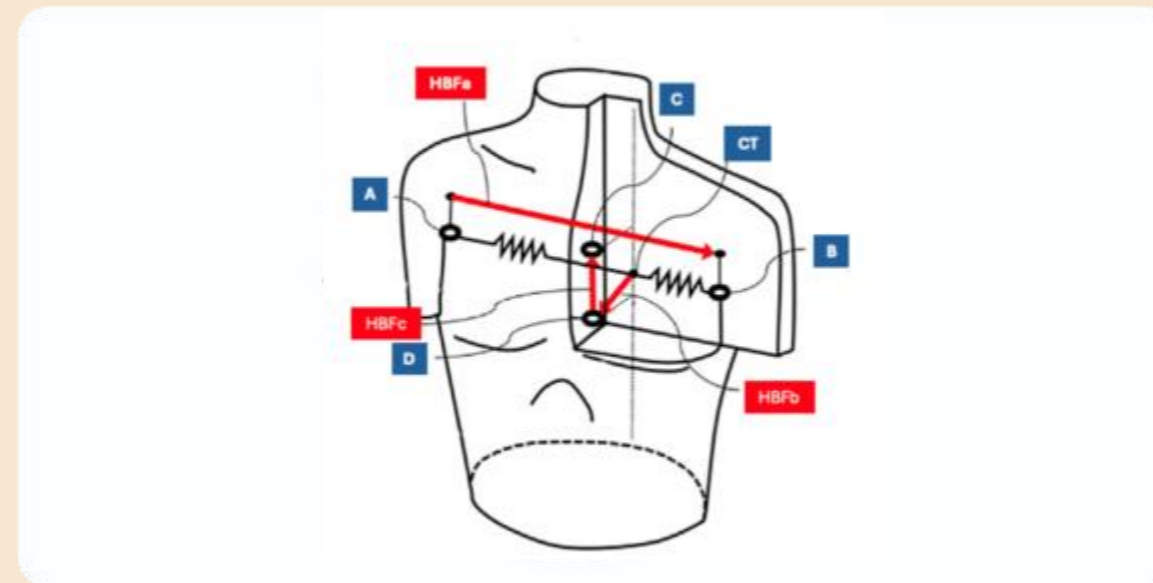
Capturing the Heart's Signals in 3 Dimensions

Patented method that collects heart signals in three non-coplanar dimensions, capturing the full electrical activity of the heart.



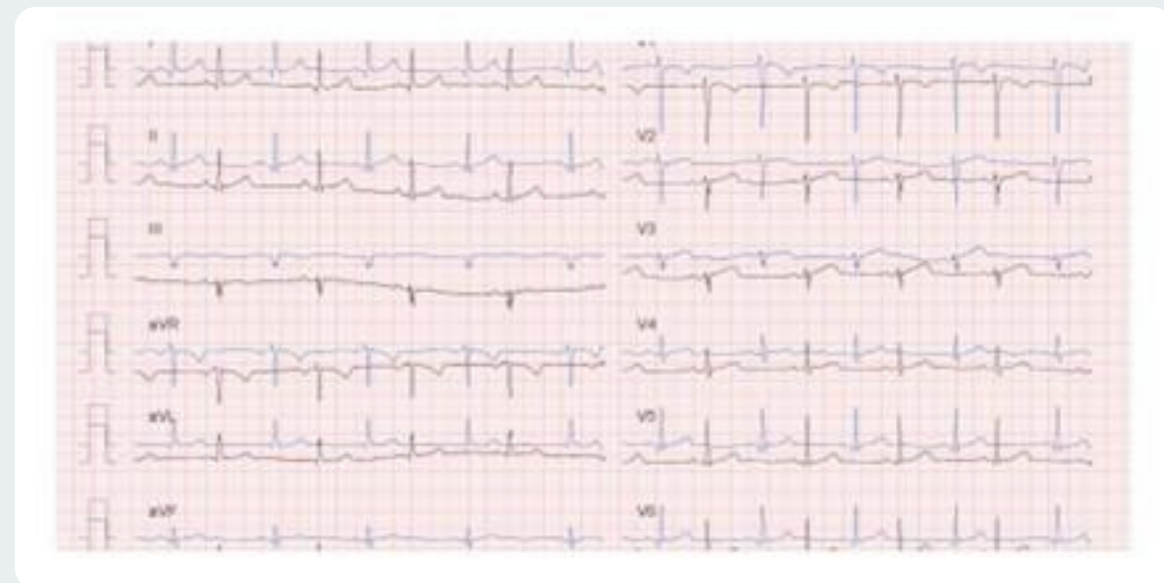
Novel Form Factor

Proprietary resistive network enables a three-dimensional approach and a synthesized 12-Lead ECG, all in a credit card-sized device.



Clinically Accurate Conversion

Personalized algorithms convert signals from three non-coplanar dimensions into physician-ready 12-Lead ECG readouts in real time.



50M+ Patient, \$40B Cardiac Platform Opportunity

Scaling from direct-pay launch to large areas of clinical need

INITIAL MARKET ENTRY POINT

1.5M PATIENTS
Concierge
& Preventive
Cardiology

EXPANSION OPPORTUNITY

3.5M PATIENTS
Broader
Patient Pay –Telehealth,
Direct to Consumer

5M+
STRUCTURED
DIRECT-PAY HEALTHCARE
High touch
membership-based
health services
\$4Bⁱ

20M+
HEART
ATTACK RISK
Adults in the U.S.
at risk of Heart
Attack
\$15Bⁱⁱ

50M+
TOTAL AT-RISK
PATIENTS
That could benefit
from HeartBeam
Platform offerings
\$40Bⁱⁱⁱ



DATA:

i. 5.0+ million patients in Direct Patient Pay in U.S. (including 1.5M+ in Concierge Market and 3.5M+ in broader patient pay market) × \$750 per year per patient

ii. 20+ million patients in U.S. at risk of heart attack (8 million prior MI + 12 million at high risk) × \$750 per year per patient

iii. 260+ million adults in U.S. × ~20% either rhythm diagnosis, palpitations, or recurring unexplained cardiac symptoms reported at some point × \$750 per year per patient; \$750 per year per patient assumed as baseline until further validation of market opportunity

The HeartBeam System is FDA Cleared and Ready for Launch

HeartBeam System Cleared and Ready For Launch

**FDA 510(k) clearances for
arrhythmia detection:**

- ✓ 12/2024:
The HeartBeam System
- ✓ 12/2025:
12-Lead ECG synthesis algorithm

- ✓ Strong IP:
25 Issued Patents Worldwide
- ✓ Robust Clinical Evidence:
14 Clinical Papers & Presentations



We Are Entering
This Market Strategically

Clear Plan to Fuel the Next Stage of Growth

Goals remain consistent, execution of strategy underway

1ST HALF 2026

Validate premium value proposition

Refine HeartBeam systems and processes

Sign and onboard anchor accounts

Prove scaling efficiency

2ND HALF 2026

Prove deep adoption into anchor accounts

Establish funnel to support 2027 revenue and adoption goals

Develop white papers/proof points for future adoption

Expand sales team for regional growth

2027+

Scale revenue

Move to a train-the-trainer model for implementation

Expand clinical research opportunities

Full commercial team onboard

SCALING EFFICIENTLY WITHOUT THE NEED FOR A LARGE FIELD FORCE

One sale to a practice → enroll many patients

Fulfill inbound patient demand from anchor accounts

No DTC marketing spend

HIGH-MARGIN, SUBSCRIPTION BUSINESS WITH PATH TO BREAK-EVEN

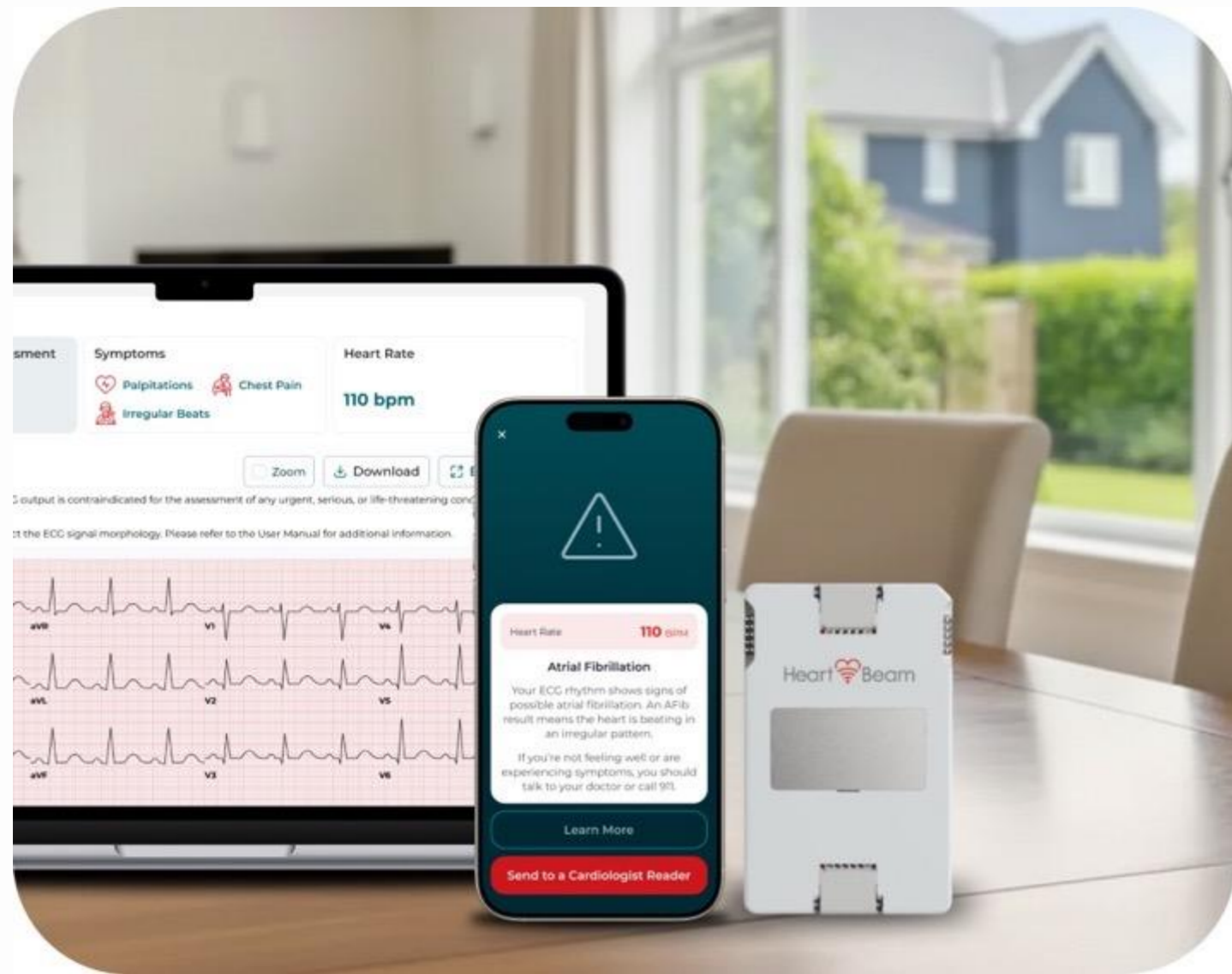
70%+ margins on recurring revenue

Only 3-5 month payback period to cover year 1 upfront costs

Cash flow break-even at ~30,000 patients



Continued Execution on a Focused Commercialization Strategy



Goals established for 1st Half 2026:

- ✓ Sign and onboard anchor accounts in key, targeted markets
- ✓ Execute a concentrated rollout strategy in **four key geographies**
- ✓ Validate our **premium value proposition**
- ✓ Refine **physician workflows**

Prove scaling efficiency

Status:

Added Atelier Health, premier concierge medicine practice led by physicians affiliated with Cedars-Sinai, and **expanded relationship with ClearCardio**

Built flagship account presence in New York, Dallas, South Florida and Southern California

Early physician engagement and flagship account traction reinforced **demand for personalized 12-lead ECG capability**

Worked directly with practices on **rollout planning, workflow integration and implementation processes**

Demonstrating ability to **access large patient populations** through a focused set of strategically selected practices, with a very **lean commercial team**

Concierge and Preventive Cardiology: an Initial Market and a Sales Channel

Patients are demanding it.
Physicians want to offer it.

PATIENTS

Demand latest clinical
innovations and technology

Proven willingness to pay

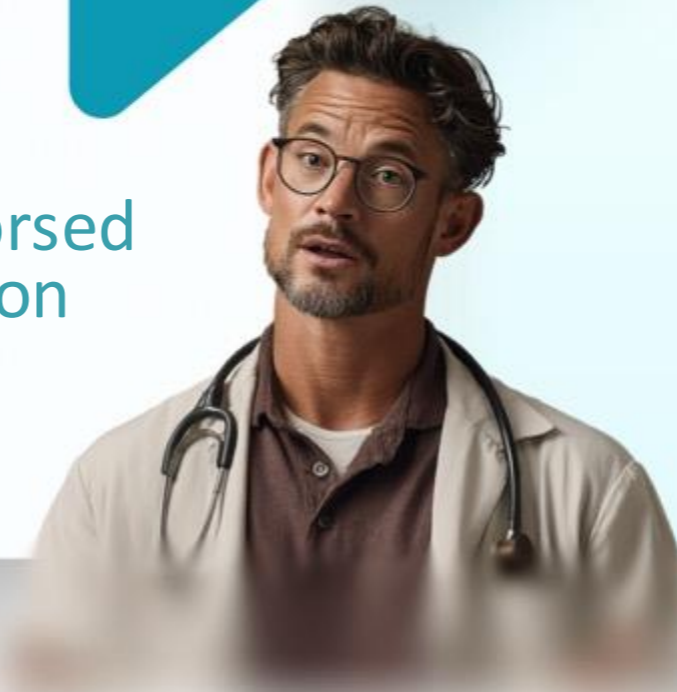
Trust physician recommendations

HeartBeam provides the peace of mind
of at-home 12-Lead ECG +
on-call cardiologists



Patients actively seek
advanced technology

Physician-endorsed
recommendation



PHYSICIANS

Tech-forward early adopters

Desire to **differentiate** their practice

Enhance **relationship** with patients

HeartBeam offers 24/7 peace of mind
for patients and promotes proactive
care

An efficient sales process and rapid adoption: these practices work together with HeartBeam to sell to patients

HeartBeam Product Offering: Annual Subscription to Patients

Equipment



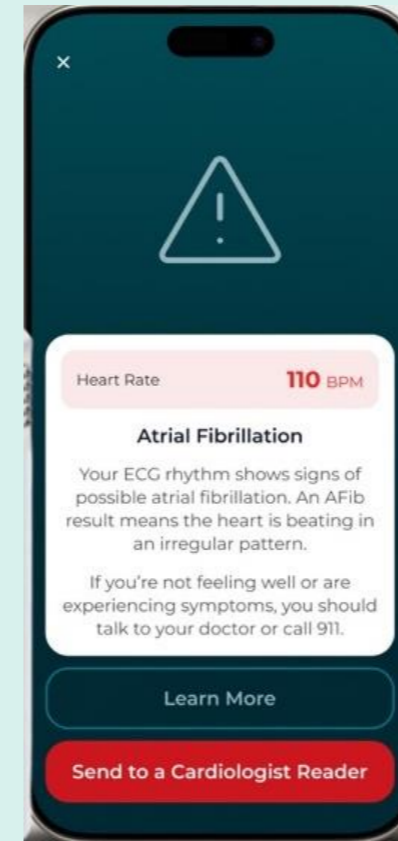
Cable-free 12L ECG synthesized through 3D ECG technology



My HeartBeam patient app

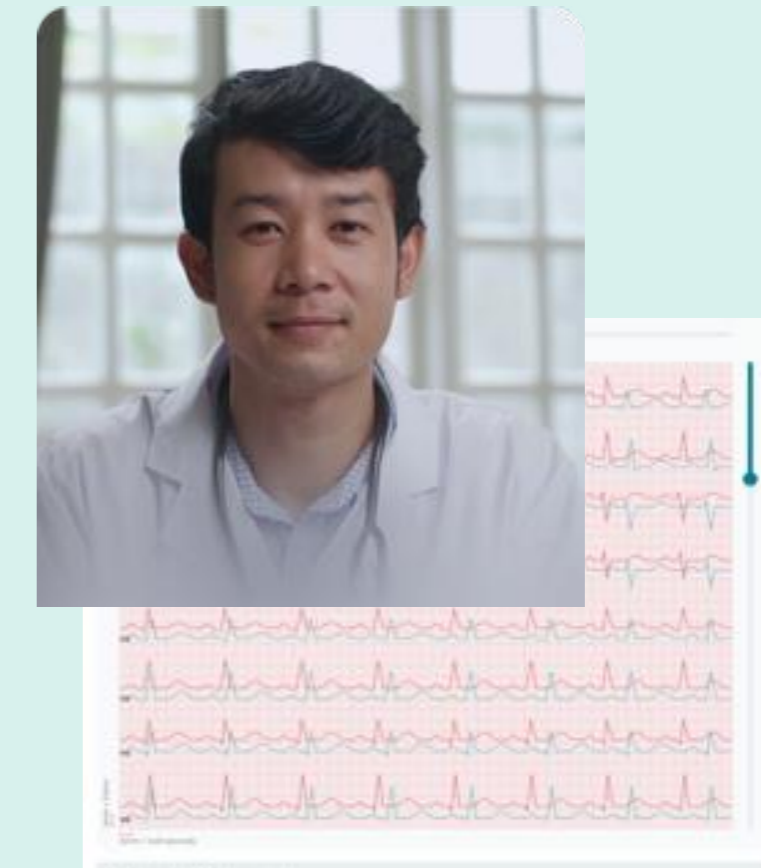
Services

Routine Recordings



Unlimited Reads
(Automated arrhythmia assessment, est. end of 2026)

Symptomatic



Credits for On-call cardiologist ECG interpretation in <30 min

Additional Tools

- Sharable summary reports
- Community features*
- Wearable integration*
- Telehealth consultations*
- AI wellness algorithms*
- MD assessments of interval trends*

* Planned for first year post-launch

Focused Launch. Foundation for Scale.

Proving success in Cardiology
and Executive Concierge Practices

**IMMEDIATE FOCUS
FOR LIMITED LAUNCH:
CARDIOLOGY AND EXECUTIVE CONCIERGE**

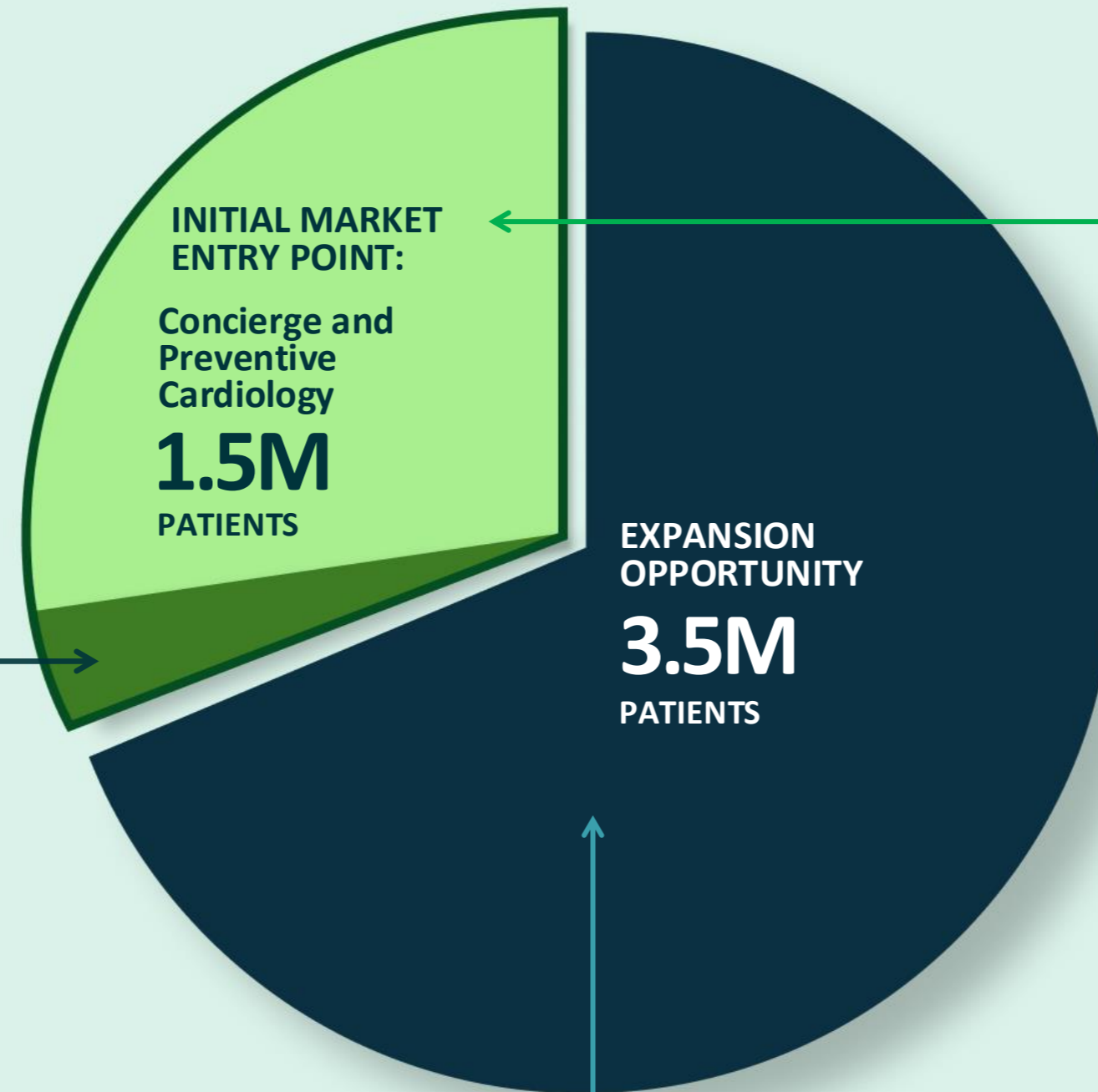
Practice Size: 400–4,000 patients

Concentrated in NY, South Florida, Dallas,
Southern California

Predominantly physician owned

10% of 1.5M Concierge Market

Break-even achievable within
this segment alone



Creates a Playbook to Accelerate
Growth Nationwide

**ACCELERATING GROWTH:
NATIONAL CHAINS**

Practice Size: 8-10 chains account for
~750,000 patients

Leverage validated proof points
from initial launch

Standardize workflow
and implementation at scale

Utilize high HSA and FSA adoption

Cost-effective expansion strategy
doesn't require huge sales force

Potential to scale with distribution
partner

EXPANSION OPPORTUNITY:

Broader Patient Pay — Direct Primary Care, Telehealth, Referrals to HeartBeam centers

MDVIP

SignatureMD

CONCIERGE
CHOICEPHYSICIANS

Commercial Launch is Only the Beginning

Heart Attack Detection

Clinical-grade heart attack detection, available wherever patients are.

20M+ high-risk patients in the U.S.

Problem

Patients can't recognize a heart attack at home

12-Lead ECG is only in hospitals

3–4 hour delays = death or heart failure

Why We Win

Two proof of concept studies show HeartBeam is similar to standard 12-Lead ECG

Baseline ECG improves accuracy over single ECG

Same device → expanded indication (no new hardware)

Status

ALIGN-ACS Pilot study underway with patient enrollment pacing ahead of schedule

ED design accelerates timelines (not prescribing to patients and waiting for events)

Informs pivotal study design

Heart Attack Detection: Clinical Validation Underway

We are rapidly advancing clinical validation to support indication expansion into acute ischemia / heart attack detection.



Existing proof-of-concept studies demonstrate high concordance to standard 12-Lead ECGs

- Novel 3D approach captures the full 12-Lead ECG information set — no need for 12-Lead synthesis
- Comparison to patient baseline shown to further increase accuracy

Pilot study underway in patients presenting with chest pain in the Emergency Department

- ED design accelerates timelines (not prescribing to patients and waiting for events)
- Evaluating HeartBeam 3D ECG and standard 12-Lead ECG vs. discharge diagnosis
- Informs pivotal study design

HeartBeam Vision for Heart Attack Detection

Physician augmented by deep learning algorithm with insights into STEMI and NSTEMI

Patient



ECG Data



ECG Interpretation and recommended action

With Cloud-Based AI Interpretation of ECG



Cardiologist reviews:

- ECG
- Baseline ECG
- Symptoms
- Patient history
- **AI output including STEMI/NSTEMI insights**

HeartBeam AI Uniquely Brings 12-Lead Personalized Insights to Patients at Home

12-Lead ECG AI exists today, but only in clinical settings. HeartBeam enables longitudinal 12-Lead insights at home.



12-Lead ECG + AI Today

CLINICALLY PROVEN ACROSS:

- Arrhythmias
- Structural Heart issues
- Heart Failure
- And more

HeartBeam's Differentiation

- Synthesized 12-Lead ECG at home
- Longitudinal, repeatable data collection
- AI evaluation over time, not just snapshots



DRIVERS:

- More personalized risk estimate
- Earlier identification of cardiac conditions
- Greater predictive power

Expands beyond arrhythmia and heart attack

Enables disease prediction and ongoing management

Opens new TAM

Supports new clinical indications

Creates potential new reimbursement pathways



Mt. Sinai Partnership

HeartBeam and Mount Sinai Announce Strategic AI Collaboration to Bring Clinical-Grade Heart Monitoring into the Home

Accelerates development of personalized cardiac AI algorithms on the HeartBeam platform across wellness and clinical use cases including assessing heart attack risk.

Positions HeartBeam to expand from symptom-based cardiac rhythm monitoring into AI-enabled disease assessment and management.

Combines Mount Sinai's world-class AI-ECG expertise and clinical expertise with HeartBeam's world-class AI-ECG team and its groundbreaking 3D ECG signal collection technology.

HeartBeam is the only platform capable of collecting 12-lead ECG data from patients anytime, anywhere over time – extending access beyond traditional clinical settings



The Platform Extends Across Form Factors

HeartBeam's On-Demand 12-Lead Patch: Disrupting the Patch Market

TODAY'S PATCH MARKET

Patch monitors are a \$2B revenue market with existing reimbursement

Devices are 1-3 leads, which limit applications to arrhythmia detection and monitoring

Mobile Cardiac Telemetry (MCT) segment has highest reimbursement and fastest growth



HEARTBEAM ON-DEMAND 12-LEAD PATCH

Development of Working Prototype of Patch complete

Clinical grade 12-Lead ECG in a patch form factor

Continuous 1-Lead mode matches performance of existing systems

On-demand 12-Lead ECG mode expands segment into ischemia detection

Integrates into existing clinical workflow

Leverages existing MCT reimbursement

Ability to drive market share shifts and grow the market

Investor Presentation 2026

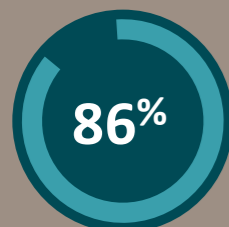


<https://www.reanin.com/reports/electrocardiograms-patch-and-holter-monitor-market>
<https://www.gminsights.com/pressrelease/wearable-cardiac-devices-market>
12-Lead patch product not cleared by FDA and not available for sale in the United States or other geographies.

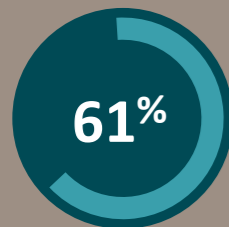
HeartBeam's 12-Lead Technology Fills Key Gaps, Draws Strong Physician Demand

PHYSICIANS WANT TO SWITCH TO 12-LEAD PATCH

PHYSICIANS THAT CURRENTLY PRESCRIBE PATCH MONITORS

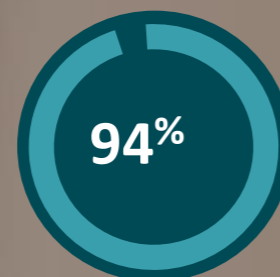


Of physicians would switch a portion of patients to a 12-Lead patch



Of existing patients that physicians would switch

FOR USE CASES, WHERE MDs PRESCRIBE OTHER CARDIAC MONITORING TECHNOLOGIES (e.g. HOLTER)



Of physicians would switch a portion of patients to a 12-Lead patch

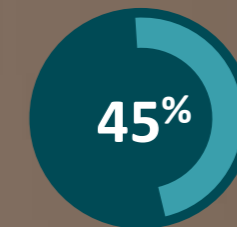


PHYSICIANS WILL PRESCRIBE MORE (MARKET ACTUALLY GROWS)

FOR USE CASES, WHERE MDs DO NOT PRESCRIBE CARDIAC MONITORING TECHNOLOGY



Of physicians would increase their patch utilization



AVERAGE increase in utilization

On-Demand 12-Lead ECG Patch: Building Significant Momentum

Targeting a \$2 billion market with established reimbursement, the 12-Lead ECG Patch has the potential to disrupt the long-term continuous monitor and mobile cardiac telemetry (MCT) markets.

Initiated Pilot Study of Novel On-Demand 12-Lead ECG Patch to Detect Ischemia Outside the Clinic

- Significant step in the clinical and regulatory path for the patch
- First ambulatory patch device designed to aid in detecting ischemia and complex arrhythmias
- Study will enroll approximately 50 patients with a high risk of coronary artery disease whose resting ECGs show no evidence of ischemia
- Results will help inform Company's broader regulatory strategy for the HeartBeam patch

Strategic Partnership Conversations Continue to Advance

- Significant level of interest in a collaboration
- ACC and HRS conferences provided opportunity for face-to-face meetings



[Click here to watch the video](#)



Multiple Entry Points Into A Patient's Care Continuum

- More frequent symptoms
- Need to quantify arrhythmia burden
- Extended monitoring requested

Need for deeper clinical insight

EPIODIC MONITORING

HeartBeam System (Card)

- Patient uses card for peace of mind
- Gets MD input as symptoms occur



CONTINUOUS MONITORING

HeartBeam On-Demand 12L Patch

- Extended monitoring with 12-lead capability
- Post-procedure (MI, ablation, etc.)



Long-term cardiac management

- Monitor Intermittent arrhythmias over lifetime
- Negative patch, symptoms or anxiety persists
- High-risk patients

Building Long-Term Value

Recent Operational Highlights

Consistent execution on near-term goals while advancing our long-term growth strategy

Commercial Strategy

- ✓ Signed first commercial partnership with ClearCardio™, a rapidly growing preventive cardiology practice. Initial rollout in 3 key markets: NY metro, Dallas, South Florida.
- ✓ Signed commercial partnership with Atelier Health, a Beverly Hills-based premier concierge medical practice led by physicians affiliated with Cedars-Sinai.

- Established flagship commercial sites across four target markets: NY, Dallas, South Florida, Southern California.
- Initial foothold in structured direct pay healthcare segment, representing approx. 5 million U.S. patients.

Heart Attack Detection

- ✓ Enrolled first patients in ALIGN-ACS pilot study for heart attack detection.
- ✓ Study in emergency department. Enrolling ahead of schedule.

- Milestone signifies key step toward future FDA indication expansion for heart attack assessment.
- Future indication expansion would address over 20 million patients at risk of heart attack.

On-Demand 12-Lead Patch

- ✓ Completed first working prototype of an extended-wear 12-lead ECG ambulatory patch, designed to aid in detecting ischemia and complex arrhythmias.
- ✓ Initiated pilot study of 12-Lead Patch to detect ischemia.

- Targets a \$2 billion market with established reimbursement; ischemia detection has potential to disrupt the patch market currently limited to atrial fibrillation detection.

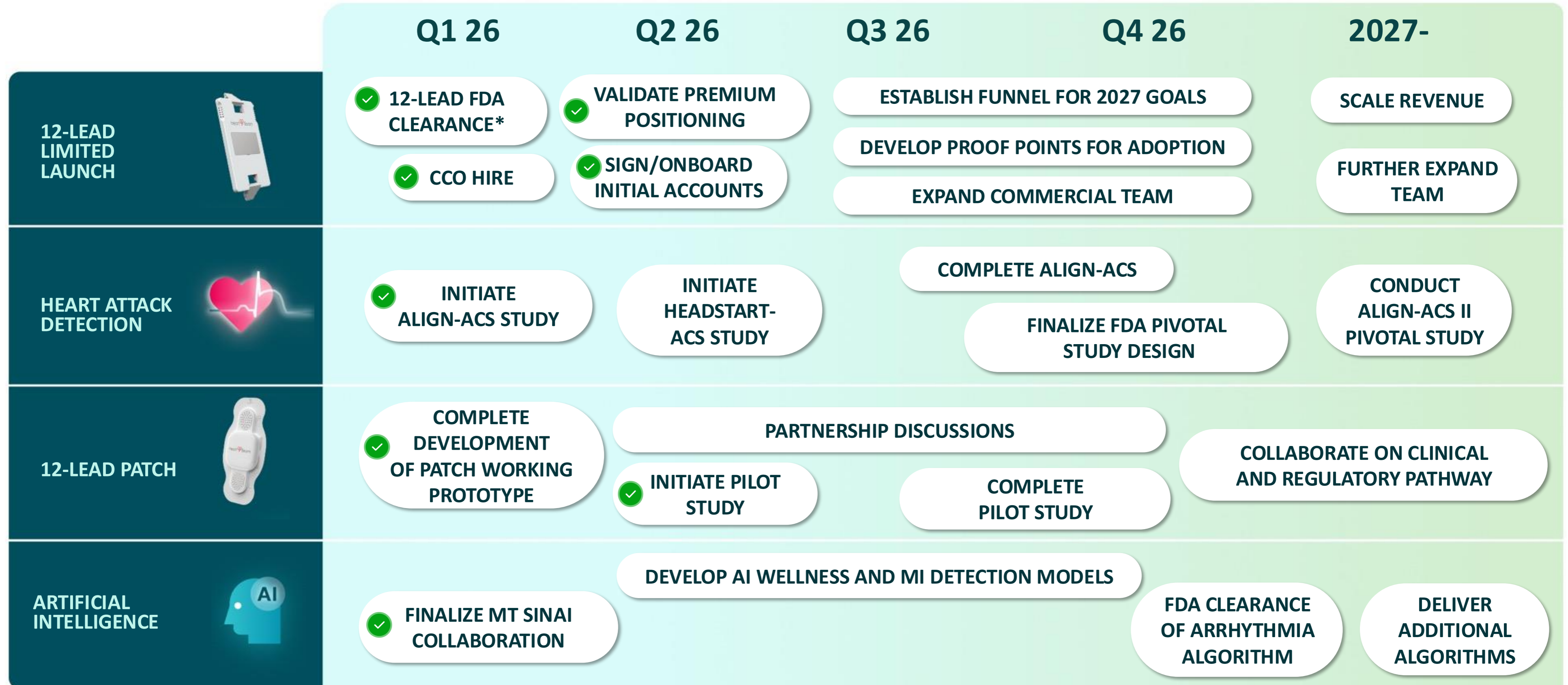
AI Program

- ✓ Announced strategic collaboration with Mount Sinai to support development and validation of next-generation AI-ECG algorithms.

- Combines Mount Sinai's AI and clinical expertise with HeartBeam's 3D ECG signal collection technology.
- Focused on future applications including heart attack detection and personalized cardiac assessment.

Upcoming Milestones

Continued progress on commercialization and other major corporate initiatives



Financials

Balance Sheet Strengthened with Recent Offering

- Gross proceeds of \$11.5 million
 - Closed a \$10.0 million underwritten public offering of common stock on April 16, 2026
 - Closed the \$1.5 million overallotment in May 2026
- Round led by first commercial customer, ClearCardio; alongside our executive leadership, board members, existing investors, and several fundamental institutional investors
- \$12.4 million proforma cash balance as of March 31, 2026 provides cash runway to advance HeartBeam into our next phase of growth
- Focused on minimizing further dilution to shareholders

\$ in Thousands	YEAR-OVER-YEAR QUARTERLY CHANGE		QUARTER-OVER-QUARTER CHANGE	
	Quarter Ended March 31,		Quarter Ended	
	2026 ⁱ	2025	March 31, 2026 ⁱ	Dec. 31, 2025
Cash, cash equivalents and restricted cashⁱⁱ	\$ 2,095	\$ 8,150	\$ 2,095	\$ 4,436
Estimated net proceeds from capital raiseⁱⁱⁱ	\$ 10,330		\$ 10,330	
Proforma Cash Balanceⁱⁱⁱ	\$ 12,425	\$ 8,150	\$ 12,425	\$ 4,436

Continued Financial Discipline Focused on Achieving Milestones

- Net cash used in operating activities of \$3.6M in Q1 2026.
 - **19% decrease compared to same quarter prior year.**
- Spend and EPS ahead of expectations.
- Includes investments in commercial launch and 12-lead Patch development.
- Continued judicious timing of investments providing ability to maintain low cost profile.
 - Operating cash outflow expected to be below \$16.0M in 2026, reduced from the \$17.0M-\$19.0M range previously guided to.
- Cash receipts from customers in second half of year will provide further reduction to cash burn.

\$ in Thousands	YEAR-OVER-YEAR QUARTERLY CHANGE		QUARTER-OVER-QUARTER CHANGE	
	Quarter Ended March 31,		Quarter Ended	
	2026 ⁱ	2025	March 31, 2026 ⁱ	Dec. 31, 2025
Operating Expenses:				
Selling, general & administrative	\$ 2,346	\$ 2,012	\$ 2,346	\$ 1,956
Research & development	2,370	3,492	2,370	3,354
Total operating expenses	4,716	5,504	4,716	5,310
Loss from operations	(4,716)	(5,504)	(4,716)	(5,310)
Interest and other expense (net)	16	20	16	8
Net Loss	\$ (4,700)	\$ (5,484)	\$ (4,700)	\$ (5,302)
Earnings per Share (EPS)	\$ (0.12)	\$ (0.18)	\$ (0.12)	\$ (0.15)
Net Loss	\$ (4,700)	\$ (5,484)	\$ (4,700)	\$ (5,302)
Less non-cash items and timing differences	1,090	1,007	1,090	2,396
Net cash used in operating activitiesⁱⁱ	\$ (3,610)	\$ (4,477)	\$ (3,610)	\$ (2,906)

Summary

Executing on a \$40B Cardiac Monitoring Platform Opportunity

- Ability to serve 50M+ patients across multiple applications and form factors
- Significantly de-risked technology
 - First ever FDA-cleared, cable-free synthesized 12-Lead ECG for arrhythmia assessment
 - Strong IP and clinical evidence
- Balance sheet strengthened with April 2026 Offering
 - Capital-efficient strategy; judicious timing of investments
- Multiple value creation opportunities in 2026

Limited Commercial Launch

- Built flagship account presence in New York, Dallas, South Florida and Southern California
- Cost-effective expansion strategy does not require large sales force

Heart Attack Detection

- Rapidly advancing clinical validation to support indication expansion into acute ischemia/heart attack detection
- ALIGN-ACS pilot study enrolling ahead of schedule

On-Demand 12L Patch

- Best in class product in \$2B revenue market with existing reimbursement
- Initiated Pilot Study; exploring strategic partnerships to speed adoption

AI Algorithms

- Developing next generation algorithms, including wellness and MI detection
- Partnering with Mt Sinai to bring 12-Lead screening and predictive algorithms to the HeartBeam System



Our Team

Leadership Team



ROB ENO

Chief Executive Officer



BRANISLAV VAJDIC, PHD

Founder & President



TIM CRUICKSHANK

Chief Financial Officer



BRYAN HUMBARGER

Chief Commercial Officer



CHRIS ACHAR

Head of Strategy
Synergy Ventures



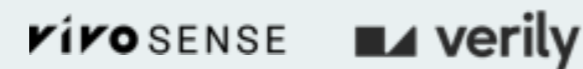
KEN PERSEN

Chief Technology Officer



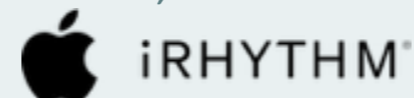
LANCE MYERS

Chief AI Scientist



RICHA GUJARATI

SVP, Product



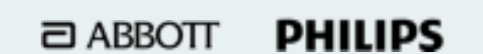
DEBORAH CASTILLO, PHD

VP, Regulatory



POOJA CHATERJEE

VP, Clinical



Scientific Advisory Board



PETER FITZGERALD, MD, PHD
Chief Medical Advisor



C. MICHAEL GIBSON, MD
SAB Chair



ROBERT HARRINGTON, MD
SAB Member



CHARLES L. BROWN III, MD
SAB Member



TONY DAS, MD
SAB Member



CAMPBELL ROGERS, MD
SAB Member



NIRAJ VARMA, MD, PHD
SAB Member



VIVEK Y. REDDY, MD
SAB Member



HeartBeam Board of Directors



RICH FERRARI
Executive Chairman



BRANISLAV VAJDIC, PHD
Founder & President



MARGA ORTIGAS-WEDEKIND
Board Member



WIM ELFRINK
Board Member



GEORGE DE URIOSTE
Board Member



KENNETH NELSON
Board Member



MARK STROME
Board Member



MICHAEL JAFF, DO
Board Member



ROB ENO
Chief Executive Officer





NASDAQ: BEAT

Redefining Cardiac Care Anytime, Anywhere.

Company

Tim Cruickshank

CFO

HeartBeam, Inc.

ir@heartbeam.com

www.heartbeam.com

Investor Relations

Chris Tyson

Executive Vice President

MZ North America

Direct: 949-491-8235

BEAT@mzgroup.us

www.mzgroup.us