



U.S. GOLD  
CORP

Keystone Overview  
Discovering the next gold district on the  
Battle Mountain-Eureka Trend, NV

# Forward Looking Statements

**TERMS OF USE AND DISCLAIMER** - This presentation is being provided for the sole purpose of providing the recipients with background information about

U.S. Gold Corp. ("U.S. Gold"). U.S. Gold Corp. has made reasonable efforts to ensure that the information contained in this presentation is accurate as of the date hereof, however, there may be inadvertent or unintentional errors. No representation, warranty or guarantee, express or implied, is made as to the fairness, accuracy, completeness or correctness of information contained in this presentation, including the accuracy, likelihood of achievement or reasonableness of any forecasts, prospects, results or statements in relation to future matters contained in this presentation. The views and information provided herein are based on a number of estimates and assumptions that are subject to significant exploration, business, economic, regulatory and competitive uncertainties. See "Forward Looking Statements" below. U.S. Gold Corp. is not liable to any recipient or third party for the use of or reliance on the information contained in this presentation. This presentation provides information in summary form only, is not intended to be complete and does not constitute an offer to sell or the solicitation of an offer to buy any security. It is not intended to be relied upon as advice to investors or potential investors and does not constitute a personal recommendation or take into account the investment objectives, financial situation or needs of any particular investor. U.S. Gold Corp is not acting as agent or advisor and encourages the use of independent consultants, as necessary, prior to entering into transactions.

**FORWARD LOOKING STATEMENTS** – Except for the statements of historical fact contained herein, the information presented constitutes "forward-looking statements" within the meaning of Canadian and United States securities and other laws. Often, but not always, forward-looking statements can be identified by the use of words such as "plans", "expects", "is expected", "budget", "scheduled", "estimates", "forecasts", "intends", "aims", "anticipates", "will", "projects", or "believes" or variations (including negative variations) of such words and phrases, or statements that certain actions, events, results or conditions "may", "could", "would", "might" or "will" be taken, occur or be achieved. By their very nature, forward-looking statements are subject to numerous risks and uncertainties, some of which are beyond our control. Forward looking statements are based on the opinions and estimates of management at the date the statements are made, as well as a number of assumptions made by, and information currently available to, U.S. Gold Corp. concerning, among other things, anticipated geological formations, potential mineralization, future plans for exploration and/or development, potential future production, drilling exposure, and exploration budgets and timing of expenditures, all of which involve known and unknown risks, uncertainties and other factors which may cause the actual results, performance or achievement of U.S. Gold Corp. to be materially different from any future results, performance or achievements expressed or implied by such forward-looking statements. Factors that could cause actual results to vary materially from results anticipated by such forward looking statements include, among others, risks related to the Company's limited operating history, current and future exploration activities, the Company's need for significant additional capital, changes in government legislation, changes in ownership interest in a project, conclusions of economic evaluations, changes in project parameters as plans continue to be refined, future prices and volatility of gold, silver and other metals, environmental risks and hazards, infrastructure and/or operating costs, labor and employment matters, availability of financing, permitting availability, government regulation, changes in equity markets, the uncertainties involved in interpreting geological data, the validity of the Company's title to its properties, increases in costs and exchange rate fluctuations, the Company's dependence on key personnel, as well as those factors discussed in the sections "Cautionary Statement Regarding Forward Looking Statements", "Risk Factors" and elsewhere.

Although U.S. Gold Corp. has attempted to identify important factors that could cause actual results to differ materially, they're other factors that cause results not to be as anticipated, estimated or intended. There can be no assurance that such statements will prove to be accurate as actual results and future events could differ materially from those anticipated in such statements. U.S. Gold Corp. disclaims any intention or obligation to update or revise any forward-looking statements, whether as a result of new information, future events or otherwise, other than as required by applicable law. Accordingly, readers should not place undue reliance on forward-looking statements of U.S. Gold Corp. should be considered highly speculative. The following is a description of U.S. Gold Corp.'s sampling methodology, chain of custody, quality control and quality assurance procedures applicable to the Company's drill results contained in this Presentation, save and except for historical results.

## Cautionary Note to U.S. Investors Concerning Mineral Resources

We may use certain terms on this website, such as "measured," "indicated," or "inferred" mineral resources, which are defined in Canadian Institute of Metallurgy guidelines, the guidelines widely followed to comply with Canadian National Instrument 43-101-- Standards of Disclosure for Mineral Projects ("NI 43-101"). We advise U.S. investors that these terms are not recognized by the United States Securities and Exchange Commission (the "SEC"). The estimation of measured and indicated resources involves greater uncertainty as to their existence and economic feasibility than the estimation of proven and probable reserves under the SEC's disclosure rules. Under U.S. standards, mineralization may not be classified as a "reserve" unless the determination has been made that the mineralization could be economically and legally produced or extracted at the time the reserve determination is made. Mineral resources that are not mineral reserves do not have demonstrated economic viability. U.S. investors are cautioned not to assume that measured or indicated mineral resources will be converted into reserves. Inferred mineral resources have a high degree of uncertainty as to their existence and their economic and legal feasibility. It cannot be assumed that all or any part of an inferred mineral resource exists, or is economically or legally viable. Under Canadian rules, estimates of "inferred mineral resources" may not form the basis of feasibility studies, pre-feasibility studies or other economic studies, except in prescribed cases, such as in a preliminary economic assessment under certain circumstances. Disclosure of "contained ounces" in a resource is permitted disclosure under Canadian regulations; however, the SEC normally only permits issuers to report mineralization that does not constitute "reserves" by SEC standards as in place tonnage and grade without reference to unit measures.

# Keystone Value Proposition

## District-Scale Exploration Potential in a Prolific Nevada Gold Trend

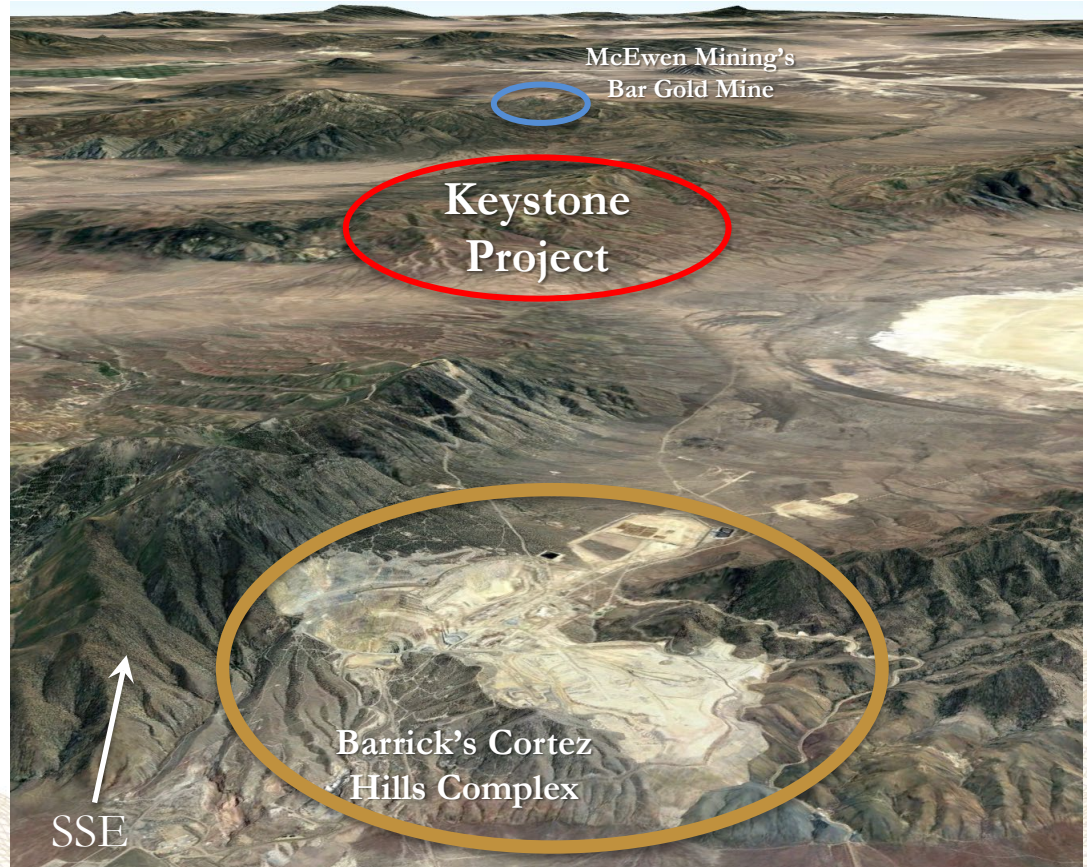
### Keystone - Nevada

- North Central Nevada property located next to some of the largest gold producing mines in North America
- Highly prospective 20 square mile claim block
- Located on the prolific **Battle Mountain-Eureka Trend**, one of the world's most prolific mineral trends
  - 11 miles south-southeast of Barrick's Cortez Hills Mine Complex
  - 9 miles north-northwest of McEwen Mining Bar Gold Mine
- **District-scale opportunity** with multiple and significant gold deposit host characteristics
- Plan of Operation permit and bonding in place for 22 hole drilling program
- Upper and lower plate rocks with extensive favorable Wenban Formation and Eocene intrusives
- Wide spread arsenic and other pathfinder anomalies associated with hydrothermal alteration across the claim block
- Near-surface oxide heap leach and deep Carlin-type gold mineralization potential

# Keystone Project Location and Regional Setting

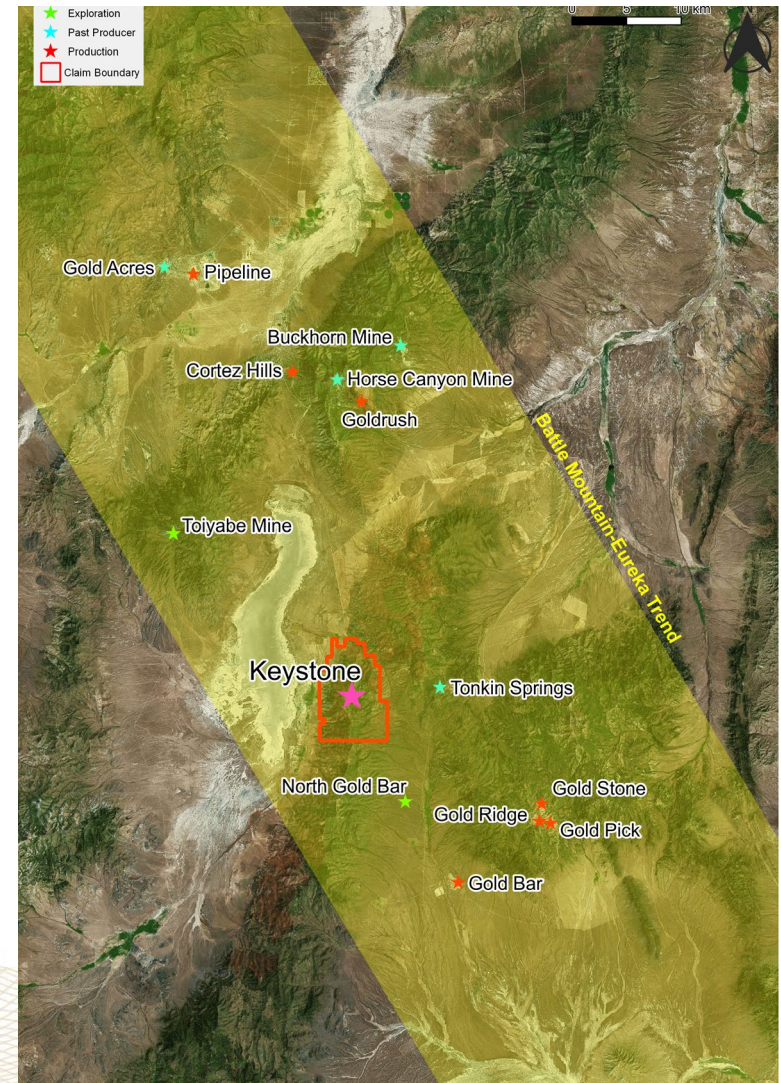
**Nevada, USA: Stable political environment, excellent infrastructure, local skilled workforce, local and regional processing facilities for a variety of ore types**

- 20 square mile of prospective ground in the Battle Mountain-Eureka Trend Gold Belt, Nevada, USA
- 11 miles south-southeast of Barrick's Cortez Hills mining complex and 9 miles north-northwest of McEwen Mining's Gold Bar mine
- Plan of Operations permit and bond in place
- 1.5hrs from Elko and Battle Mountain, Nevada



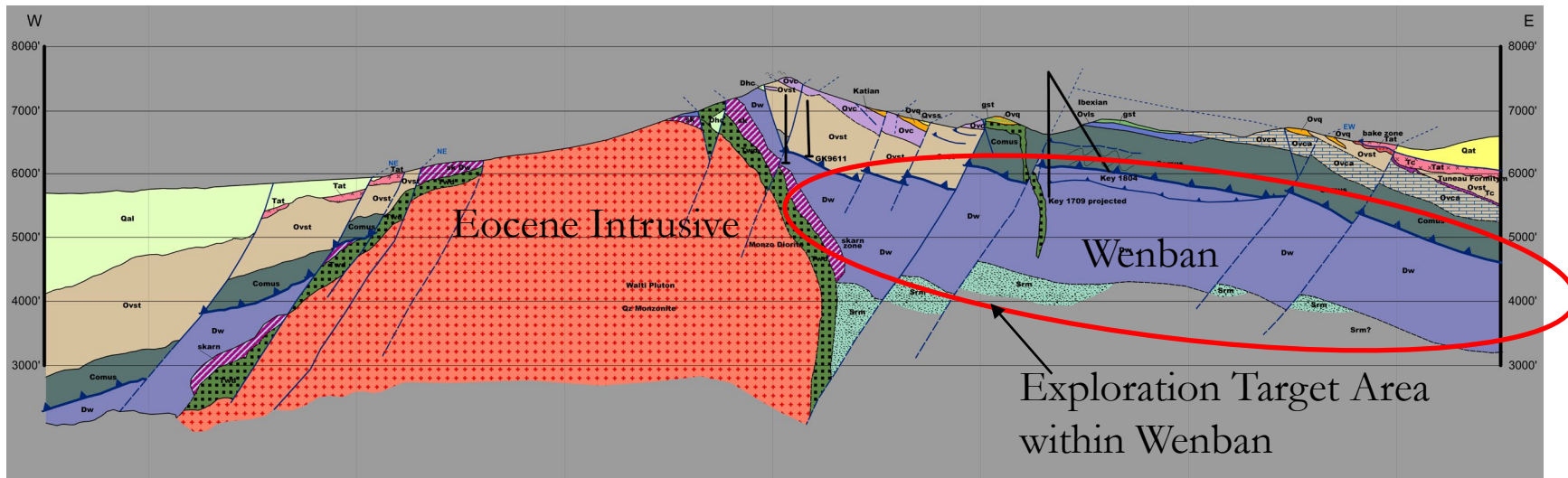
# Keystone Relative to Known Gold Deposits in the Battle Mountain-Eureka Gold Trend

- Strong NW trending regional structural fabric is evident by gravity anomaly and terrain patterns. NW trending structures are major controls to mineralization at Keystone and elsewhere in the gold belt.
- Favorable Devonian Wenban Fm as seen at nearby producing and past producing mines
- Eocene dikes and sills similar in age to dikes controlling mineralization at Cortez
- Most gold deposits shown are one million ounce or greater deposits. Several smaller deposits are also shown. It is common in Nevada's Carlin-type districts for many smaller deposits to be located before the larger deposits are found.

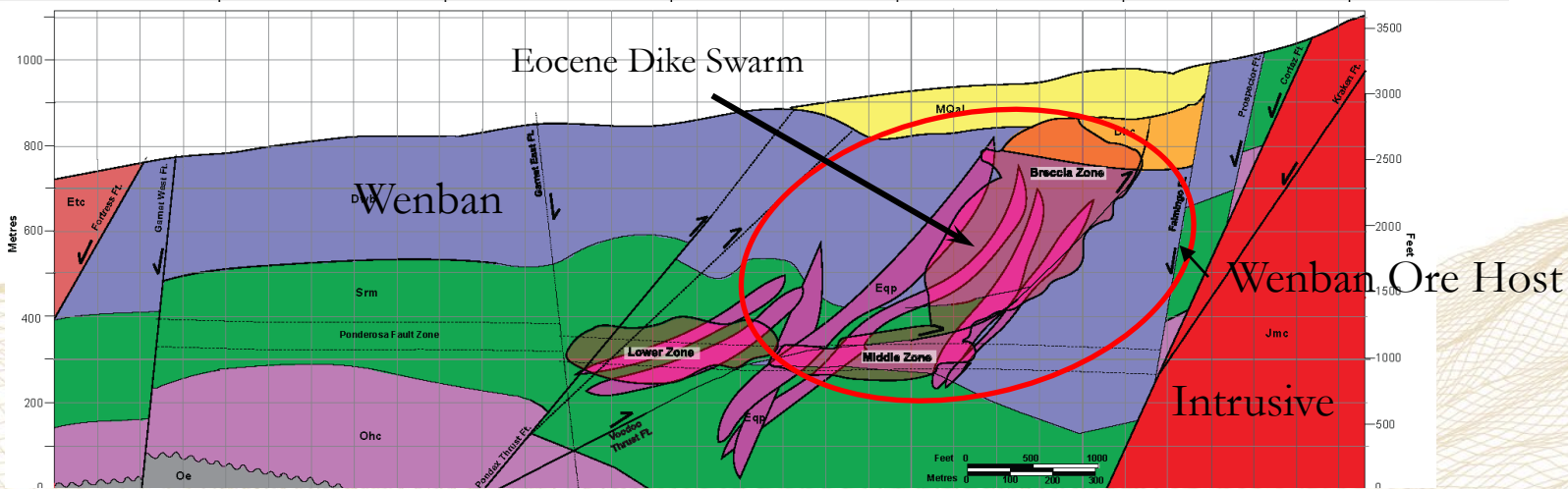


# Typical Keystone and Cortez Cross Sections

Keystone



Cortez



From Herron, 2018 Vectoring Cortez Hills Thesis

# Cortez Complex Comparison to Keystone

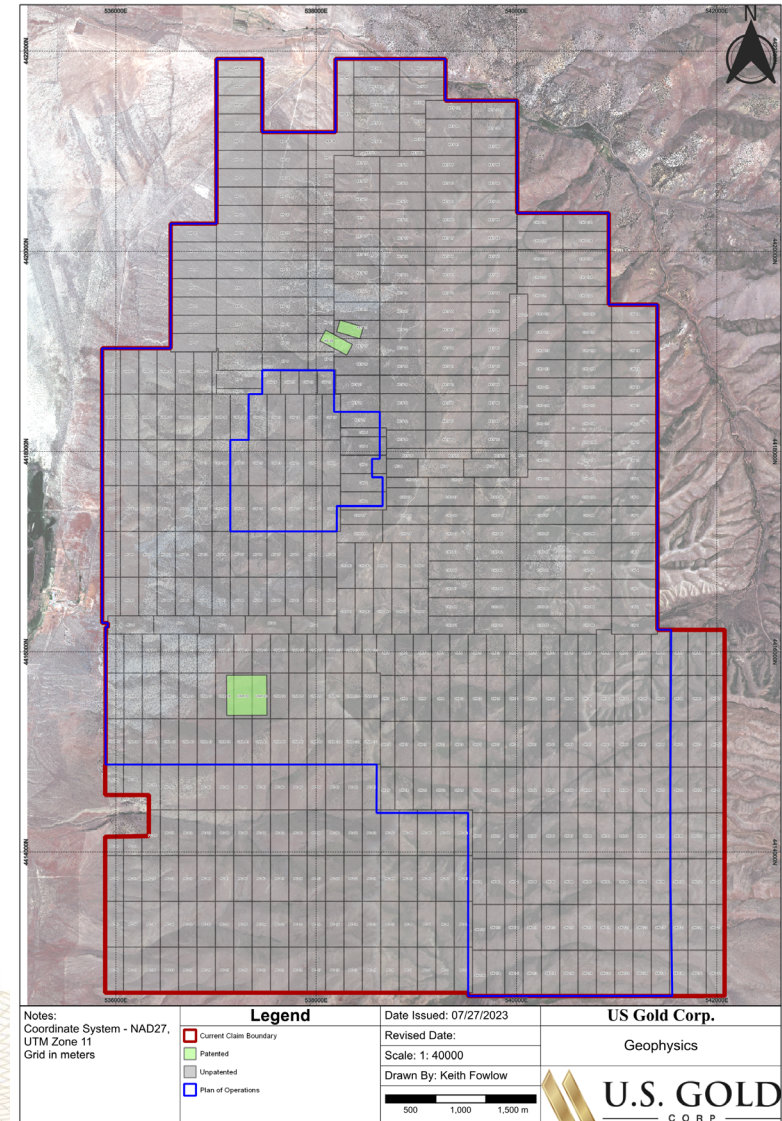
51 million gold ounces produced and within mineral reserves and resources

## Cortez and Keystone Similarities

- ✓ Within Battle Mountain - Cortez trend
  - ✓ Keystone 11 miles south of Cortez Complex
  - ✓ Extensive Wenban Fm across the entire property
  - ✓ Broad areas of elevated pathfinder elements
  - ✓ Eocene-aged intrusives related to mineralization
  - ✓ Porphyry and Carlin-type mineralization
  - ✓ Dissolution collapse breccias
  - ✓ High angle fault structures
- **Keystone**
    - Near surface and deep targets are largely untested
    - 20 square miles of geologic mapping, soil sampling and rock chip sampling
    - Approved Plan of Operations for targeted drilling

# Keystone Claims and Permits

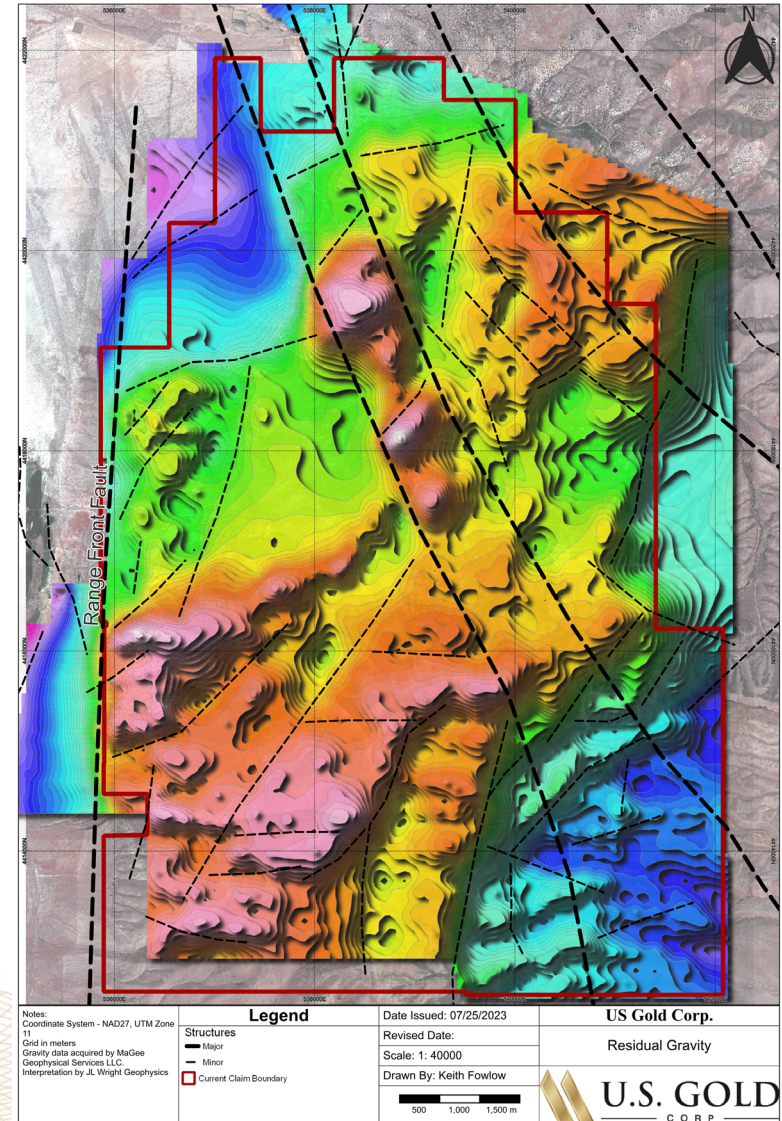
- Claim boundary – 11,811 acres (47.8km<sup>2</sup>)
- 601 unpatented claims – 11,771.1 acres (47.6km<sup>2</sup>)
- 2 groups of patented claims – 39.9 acres (0.2km<sup>2</sup>)
- Claims valid through 2024 subject to annual renewal
- Plan of Operations approved (Blue outline) by BLM
- Authorized for 100 acres of disturbance
- Royalties subject to underlying agreements





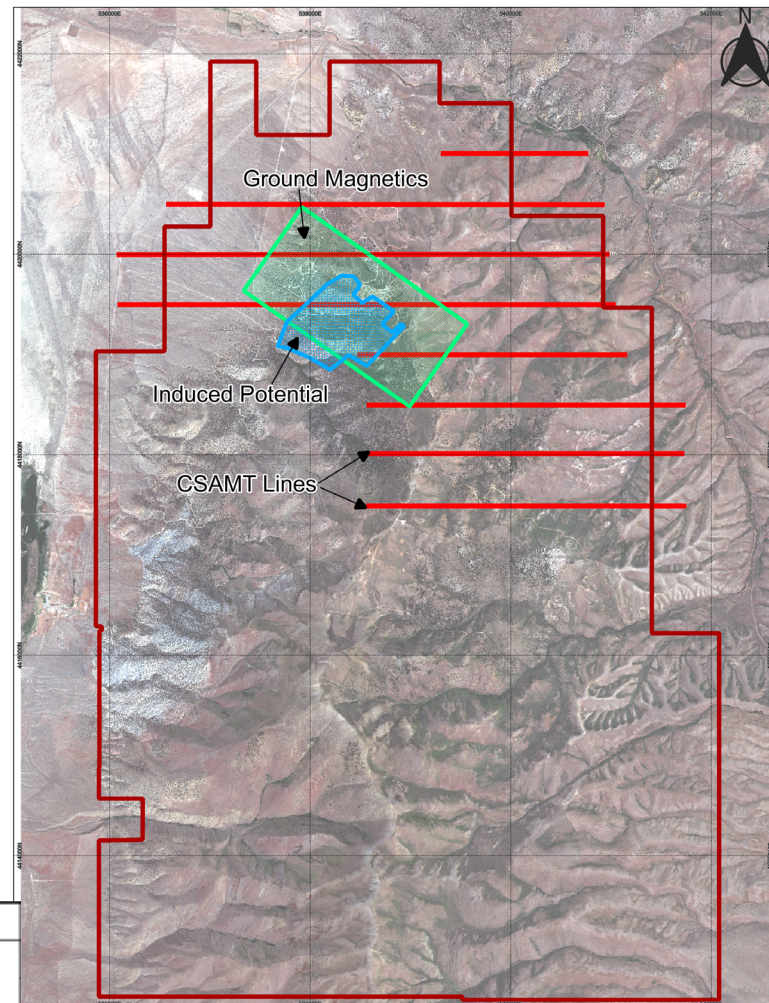
# Keystone Residual Gravity with Interpretation





- As of 2023, 3,893 gravity stations have been compiled for the Keystone project, with an approximately 100 meter staggered spacing over most of the property.
- Strong, through-going northwest striking structures are well defined in the gravity interpretation, and are real features mapped at surface and supported by surface geochemistry
- Stacked with surface geology and geochemical data, along with historical drilling and other geophysics, to generate priority targets



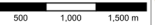


# Keystone Geophysics

- Ground Mag by US Gold Corp. in 2017. 41 line kms at a 50m spacing, 2.04km<sup>2</sup>
- CSAMT by Placer Dome in 2005 - 8 lines for 27.57 line kms
- Induced Potential by Nevada Pacific Gold in 1999 – 0.66km<sup>2</sup>
- Public air magnetics available at a coarse line spacing
- Additional geophysics recommended for Nina Skarn and Sophia targets

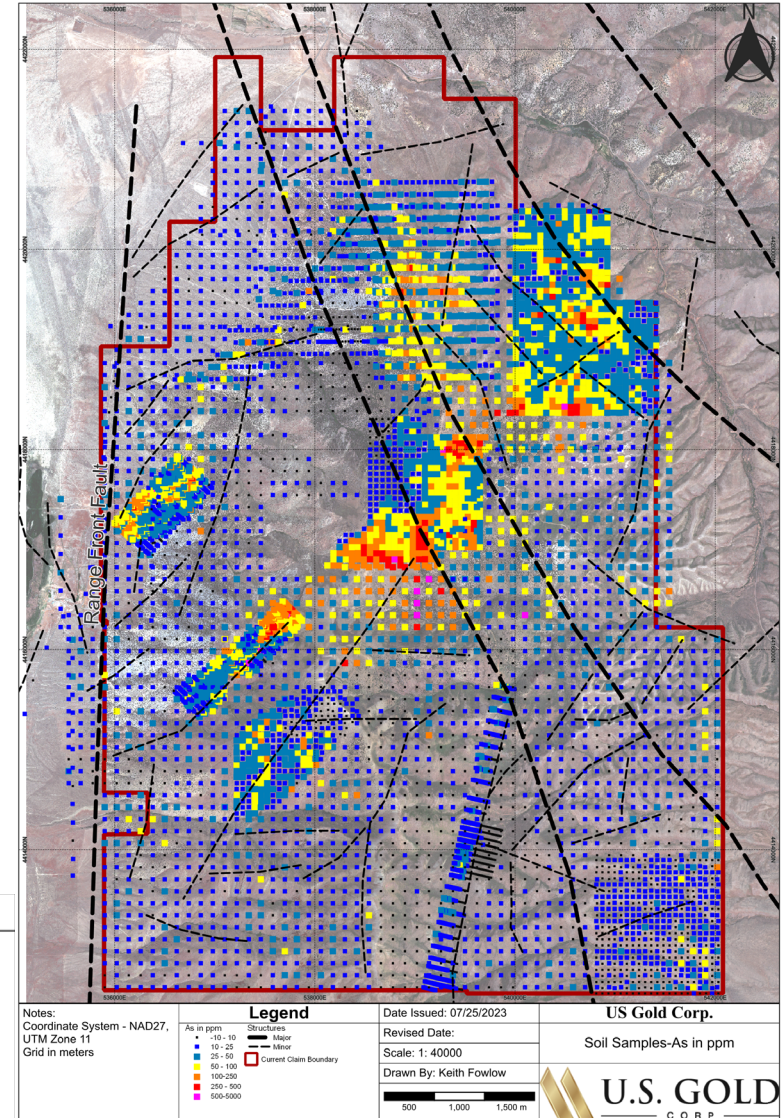


Legend	
	Current Claim Boundary
	CSAMT Lines
	Ground Magnetics
	IP Area

Notes: Coordinate System - NAD27, UTM Zone 11 Grid in meters	<b>Legend</b>	Date Issued: 07/27/2023	<b>US Gold Corp.</b> Geophysics
		Current Claim Boundary	
		Scale: 1: 40000	
		Drawn By: Keith Fowlow	
			

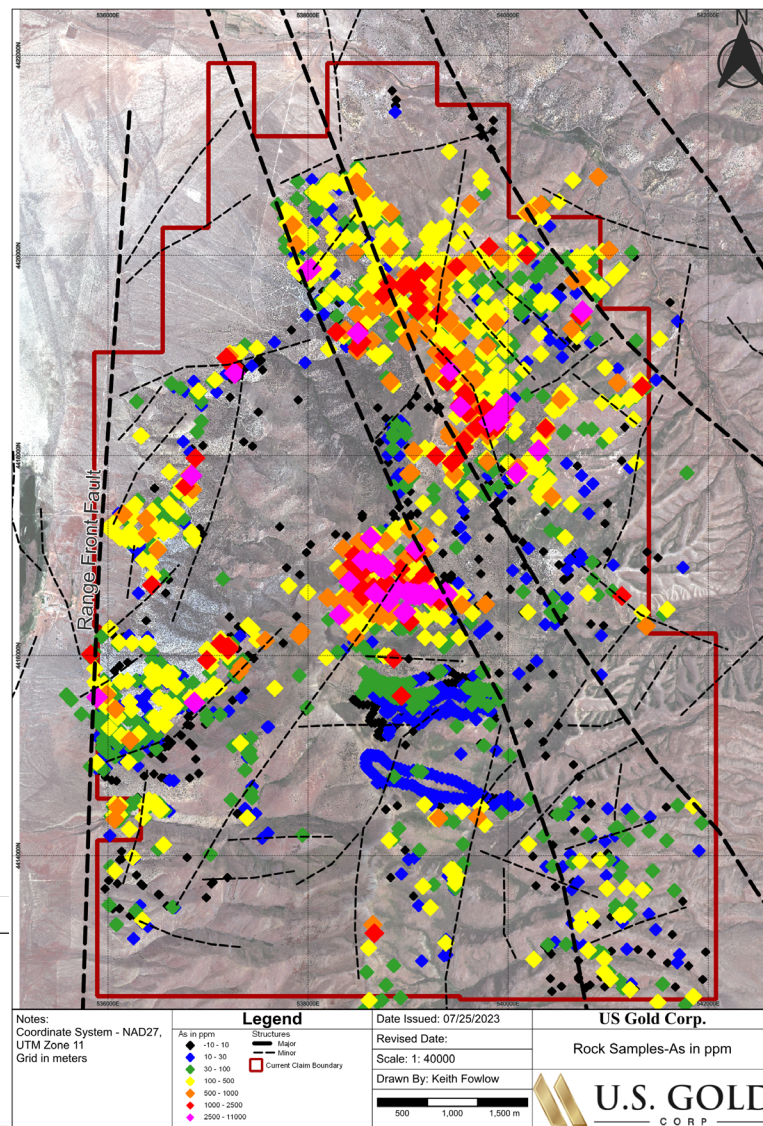
# Keystone Surface Geochem – Arsenic in Soils

- 7,230 soil samples in compiled database
- Arsenic in soils appears to follow the large, northwest and northeast oriented gravity interpreted structures, and in a few cases, gravity lows (alteration). Which have been verified with surface mapping and drilling
- Majority of soil samples collected on a 400 ft X 400 ft grid, with more detailed areas 200 X 200 feet, and in some cases 50 X 200 feet



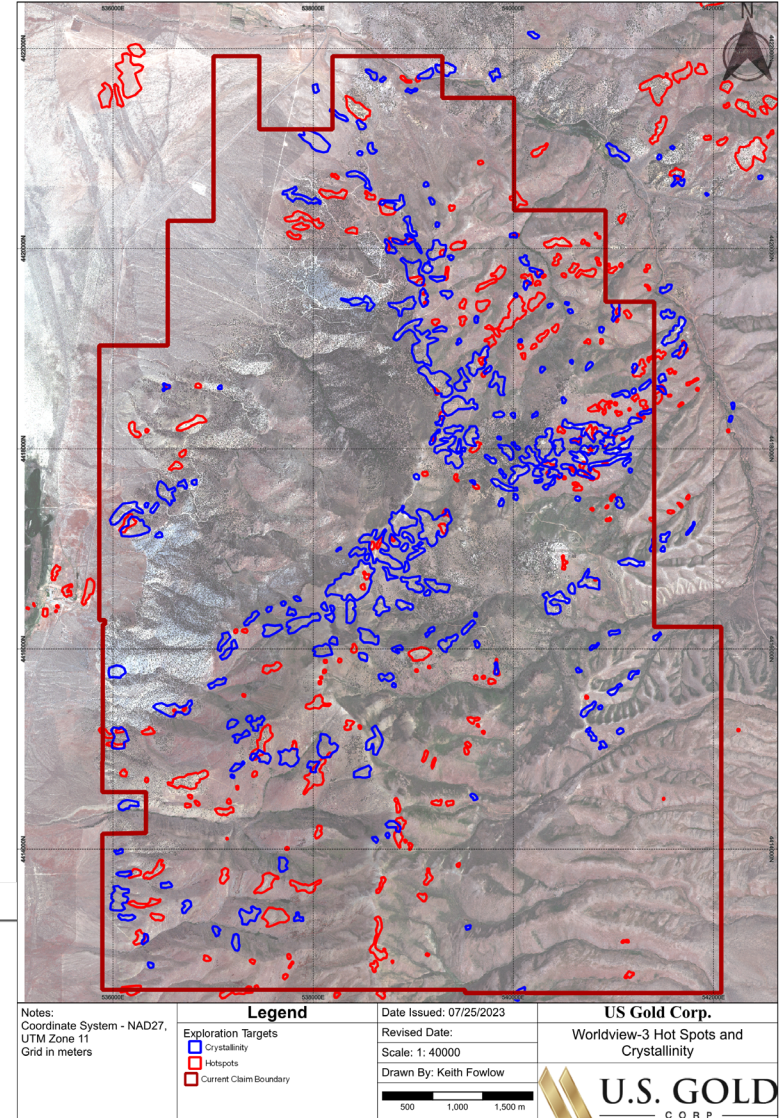
# Keystone Surface Geochem – Arsenic in Rock Chips

- 3,568 rock chip samples and 661 altered cobble samples taken to date
- In addition, 210 whole-rock samples have been collected, along with 77 fossil samples for conodont-radiolarian age dating of stratigraphy
- Arsenic anomalies concur with soil sampling



# Keystone Hyperspectral Survey

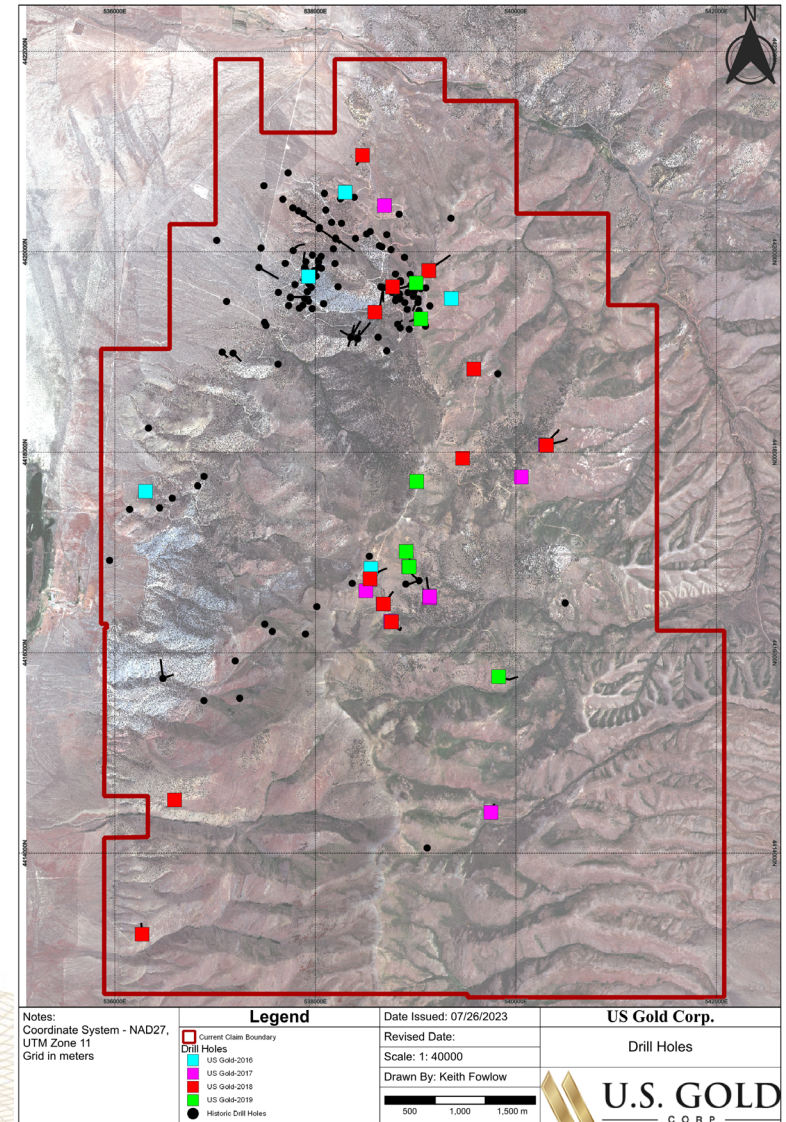
- Worldview-3 satellite data, acquired on June 15, 2022, by Exploration Mapping Group, Inc from Las Vegas, Nevada
- Covers 150 km<sup>2</sup>
- 50 GIS layers including
  - Panchromatic and Natural color images
  - Vegetation and Soils
  - Iron rich soils and Iron Separation(iron mineralogy)
  - Advanced Argillic, Propylitic and Phyllic alteration
  - Geology, Regolith, and Carbonate Enhancement
  - Hot Spots and Crystallinity
- Targets generated by overlaying alteration mapping, hot spots, and color image
- Field verification underway and will be completed by end of September 2023



# Keystone Drilling

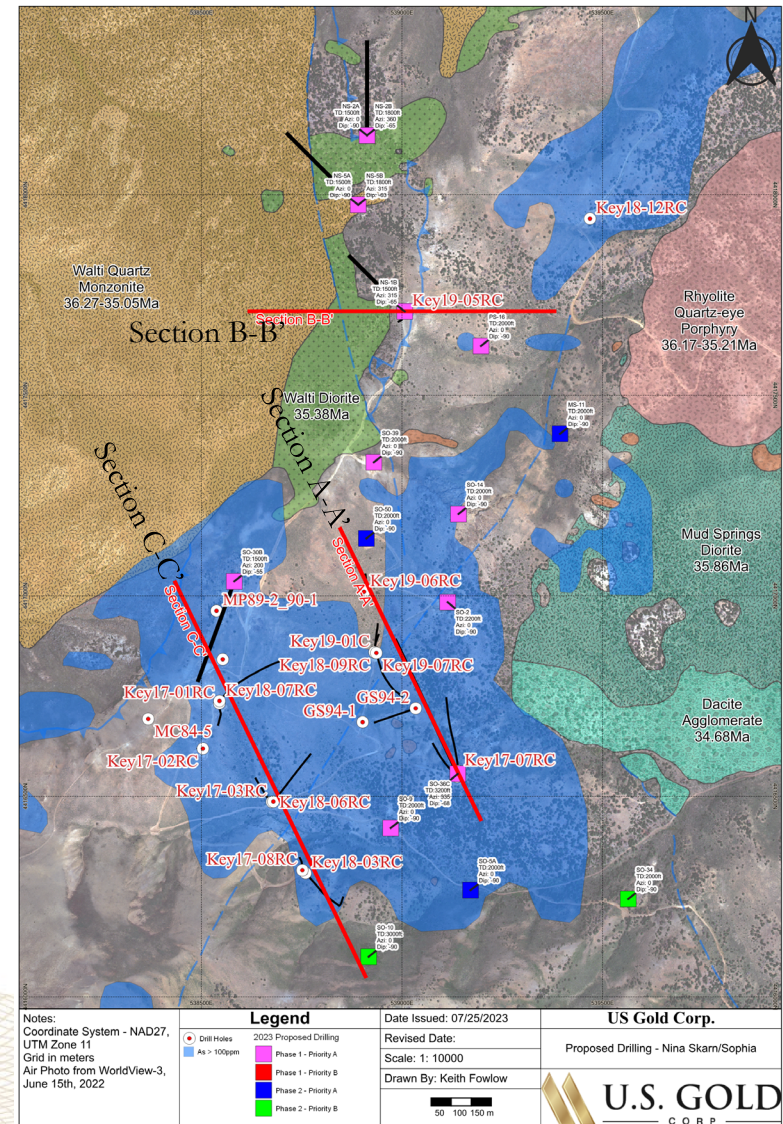
- Keystone first drilled in 1967 by Newmont
- Explored by Chevron and Placer Dome
- Best historical intercept is 1.6m @ 4.27ppm Au
- Historical drilling averaged 427 feet (too shallow for Wenban targets)
- 2016-2019 US Gold drilling focused on deep targets generated by soil sampling, geophysics, and geologic mapping

Year	RC	RC-meters	Core	Core-meters
2016			5	2,237.9
2017	10	5,622	1	489.2
2018	15	7,714.4		
2019	6	3,462.6	1	553.8
<b>Total</b>	<b>31</b>	<b>16,799</b>	<b>7</b>	<b>3,280.9</b>



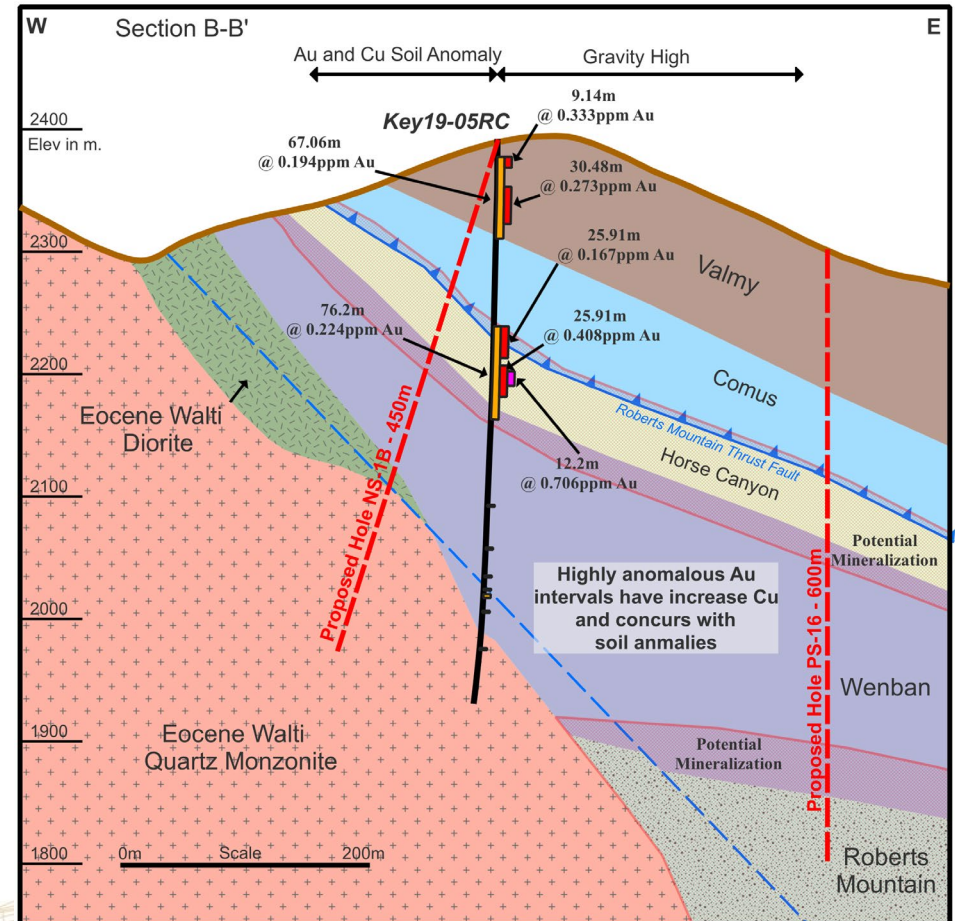
# Keystone Nina Skarn/Sophia

- Intersection of prominent NW and minor NE structures from 2016-2018 gravity survey
- Strong Arsenic, Antimony, and Thallium anomalies at structural intersection
- Eocene Walti quartz monzonite and Mud Springs diorite comparable in age to Cortez Complex intrusives
- Eocene diorite and andesite dikes within mineralized targeted Horse Canyon and Wenban host rocks
- Multiple 2017-2019 holes ended early in mineralization due to poor drilling conditions caused by solution cavities in lower plate rocks



# Nina Skarn Drilling

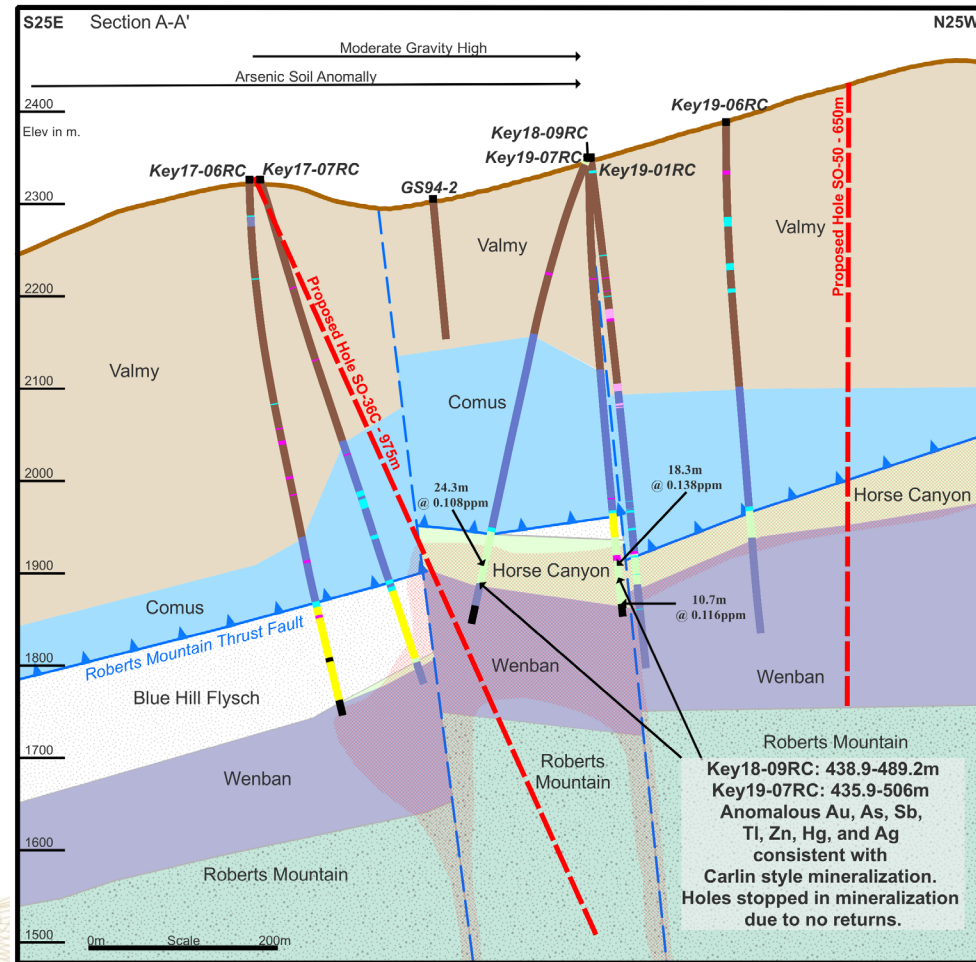
- Key19-05RC: 76.2m @ 0.224ppm Au, largest Au interval at Keystone, includes 12.2m @ 0.706ppm
- Gold in garnet-pyroxene skarn within the Roberts Mountain Thrust contact between Comus and Horse Canyon, copper-bismuth-tellurium-antimony geochemical correlation with gold
- Gold and Copper anomaly in soil samples within Valmy above mineralization
- Gravity high above prospective mineralized Comus and Horse Canyon





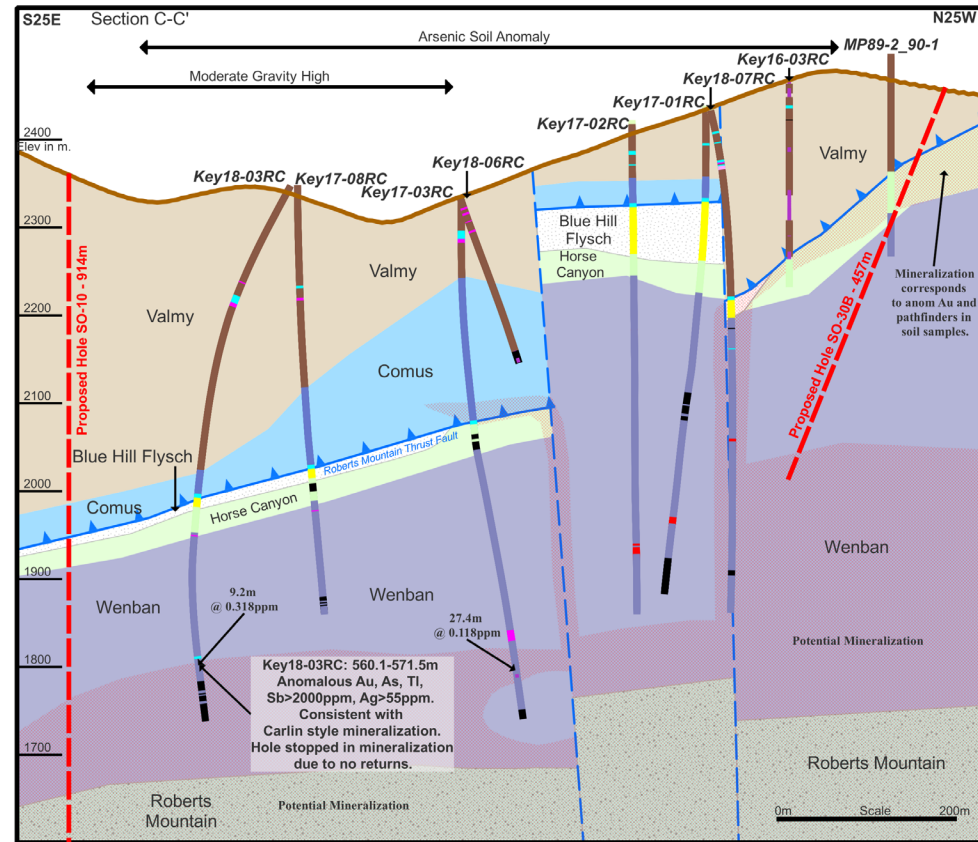
# Sophia Drilling

- Key18-09RC:
  - 18.3m @ 0.138ppm Au with elevated As, Bi, Tl, Hg, and Sb
  - 10.7m @ 0.116ppm Au with elevated As, Bi, Tl, Hg, Sb, and Zn
- Key19-07RC:
  - 24.3m @ 0.110ppm Au with elevated As, Tl, Hg, Sb, Zn, and Ag
  - 45.8m @ 0.059ppm Au with consistent anomalous Au and Ag >1ppm Ag
- Holes stopped due to poor drilling conditions and no returns due to voids in collapse breccias
- Mineralization in Horse Canyon and Wenban within a horst block
- Proposed drilling targeting extension of mineralization below Key19-07RC within the Wenban and Roberts Mountain
- Anomalous Arsenic in soil samples and moderate gravity high above mineralization



# Sophia Drilling

- Key18-03RC:
  - 9.2m @ 0.318ppm Au with elevated As, Se, Tl, W, >2000ppm Sb and >56ppm Ag
  - Hole stopped due to poor drilling conditions and no returns
- Key17-03RC:
  - 27.4m @ 0.118ppm Au with anomalous As and Tl
- Mineralization in Wenban
- Anomalous Arsenic in soil samples and moderate gravity high above mineralization



# Keystone Summary

---

- Located within the prolific Battle Mountain – Eureka Gold Trend
- Close proximity to Barrick’s Cortez Hills mine complex and McEwen Mining Bar Gold Mine
- BLM Plan operations permit in hand with 200 acres of approved disturbance
- Favorable Devonian sedimentary rocks with Eocene intrusives
- Multi-element soil anomalies
- Numerous untested targets
- Hyperspectral hot spot targets are being field checked and sampled
- Potential for near-surface oxide and deep Carlin-type gold mineralization

# Keystone Strategy

- Approved Plan of Operations for 22 holes
- Follow-up of hyperspectral hot spots
- Awaiting catalyst for additional exploration
  - Market enthusiasm for exploration
  - Partnership with ability to deploy capital on a robust and accelerated exploration program
  - Cashflow from developed assets
- Minimal holding costs ~\$125,000 annually

# The U.S. Gold Corp. Opportunity

**Tight share structure & aggressively advancing two world-class assets**

- **World-class portfolio**, in stable and mining friendly U.S. jurisdictions. The portfolio offers investors both potential near-term production and sizeable blue sky exploration.
- Team of **renowned explorers and proven company builders**, who have made, and financed, the discovery and development of numerous world class gold assets
- CK Gold offers exposure to **compelling value**, and potential near-term production in **mining friendly Wyoming**.
- Keystone offers exposure to significant potential exploration upside – an entire district on **Nevada’s prolific Cortez Trend**.
- The company has a **tight share structure** (19.3M shares outstanding), with a large audience - listed on **NASDAQ**



# Keystone Metallurgy and Specific Gravity

## Metallurgy

- Analysis by Bureau Veritas, Reno, Nevada
- Cyanide leach of 30g sample, 1 hour room temperature cyanide shake
- 57 samples from oxidized zones in Key19-05RC
- All mineralized rock types sampled
- Au assays >0.1ppm
- Maximum recovery 91.7%, Wenban
- Minimum recovery 31.7%, fault breccia
- Results similar to Cortez Mine Complex

Formation	Number of Samples	Average Recovery-%
Valmy	25	69.5
Comus	7	65.8
Fault	5	51.2
Horse Canyon	17	69.3
Wenban	3	78.9
<b>Total</b>	<b>57</b>	<b>67.9</b>

## Specific Gravity

- Analysis by ALS Global, Reno, Nevada
- Specific gravity calculated by water displacement with sealant coating
- 34 samples from 2016 and 2017 core holes
- Maximum SG 3.27, Comus Hornfels
- Minimum SG 2.08, fault breccia

Formation	Number of Samples	Average SG
Valmy	11	2.5
Comus	7	2.87
Fault	3	2.36
Wenban	11	2.65
Quartz Monzonite	1	2.70
Andesite	1	2.54
<b>Total</b>	<b>34</b>	<b>2.62</b>

# 2016-2019 US Gold Corp. Drill Intercepts >0.3ppm Au

Hole ID	From-m	To-m	Length-m	Au-ppm	Ag-ppm	As-ppm	Sb-ppm	Hg-ppm	Tl-ppm	W-ppm	Notes
<b>Key16-01C</b>	285	286.5	1.5	1.735	0.900	3220.0	11.00	1.000	5.00	5.0	
<b>Key17-02RC</b>	272.8	274.3	1.5	1.050	0.300	1230.0	7.00	0.500	5.00	5.0	
<b>Key17-03RC</b>	48.8	50.3	1.5	0.731	0.400	7090.0	15.00	0.500	5.00	10.0	
	239.3	240.8	1.5	0.654	0.400	10001.0	14.00	0.500	5.00	10.0	As over limits
	254.5	256	1.5	0.314	1.100	2550.0	49.00	1.00	5.00	10.0	
	544.1	545.6	1.5	0.320	0.100	396.0	13.00	1.00	5.00	5.0	
<b>Key17-04RC</b>	29.1	298.7	7.6	1.291	2.400	1283.1	9.81	0.498	2.66	1.2	
<b>Key17-06RC</b>	147.8	149.4	1.6	0.408	0.420	601.0	3.87	0.137	0.42	2.6	
<b>Key17-07RC</b>	29	30.5	1.5	0.938	0.420	2988.0	4.57	0.009	0.68	2.7	
	30.5	32	1.5	1.335	0.519	7765.7	4.66	0.012	0.40	2.7	
	335.3	338.3	3	0.398	2.800	10001.0	22.5	0.115	0.99	2.2	As over limits
	339.9	344.4	4.5	0.686	4.620	10001.0	50.93	0.437	4.52	2.1	As over limits
<b>Key17-08RC</b>	213.4	217.9	4.5	0.572	0.873	401.9	4.31	0.338	1.61	2.3	
<b>Key17-09RC</b>	48.8	50.3	1.5	0.558	0.417	295.4	3.15	0.017	0.67	0.9	
<b>Key17-10RC</b>	510.5	512.1	1.6	0.427	0.571	16.5	0.56	0.651	0.16	-0.1	
<b>Key18-03RC</b>	140.2	141.7	1.5	2.201	1.787	1268.8	10.32	0.876	3.21	5.6	
	143.3	144.8	1.5	0.350	0.573	316.6	3.09	0.286	0.85	7.6	
	560.8	568.5	7.7	0.363	48.071	536.0	2000.10	0.107	2.80	35.4	High Ag and Sb over limits, Stibnite
<b>Key18-04RC</b>	51.8	53.3	1.5	0.384	0.950	312.1	2.92	0.082	0.37	0.8	
	67.1	68.6	1.5	0.448	0.493	286.8	2.43	0.039	0.29	1.0	

# 2016-2019 US Gold Corp. Drill Intercepts >0.3ppm Au

Hole ID	From-m	To-m	Length-m	Au-ppm	Ag-ppm	As-ppm	Sb-ppm	Hg-ppm	Tl-ppm	W-ppm	Notes
<b>Key18-07RC</b>	73.2	74.7	1.5	0.403	0.407	1048.1	3.82	4.016	2.41	0.1	
	155.4	158.5	3.1	0.525	0.145	4860.1	8.05	0.055	2.47	2.6	
<b>Key18-09RC</b>	294.1	300.2	6.1	1.135	0.312	65.6	6.41	0.009	0.29	8.7	
<b>Key18-10RC</b>	0	3	3	1.549	-1	-1	-1	-1	-1	-1	Pathfinders not assayed
	3	4.6	1.6	1.332	-1	-1	-1	-1	-1	-1	Pathfinders not assayed
	83.8	85.3	1.5	0.352	-1	-1	-1	-1	-1	-1	Pathfinders not assayed
<b>Key18-11RC</b>	0	6.1	6.1	0.906	0.217	299.1	10.0	0.517	1.93	5.0	
	10.7	12.2	1.5	0.359	0.121	282.5	15.87	0.435	3.19	10.2	
	50.3	51.8	1.5	1.119	3.976	478.5	57.95	0.080	0.78	13.2	
	111.3	112.8	1.5	0.693	0.442	104.9	2.39	0.031	0.42	1.1	
	115.8	117.3	1.5	0.409	0.314	85.7	5.88	0.074	0.33	2.2	
	125	128	3	0.609	0.977	100.7	14.40	0.003	1.40	47.8	
	391.7	393.2	1.5	0.639	0.576	181.8	13.13	0.031	1.49	3.8	
<b>Key18-14RC</b>	103.6	105.2	1.6	0.543	55.351	57.5	56.4	0.014	0.94	1.5	High Ag
<b>Key19-01C</b>	401.4	402.9	1.5	2.112	0.124	607.1	30.71	0.529	0.66	1.7	
<b>Key19-02RC</b>	93	96	3	0.53	0.612	373.8	21.72	0.900	0.53	1.2	
	108.2	109.7	1.5	0.397	0.597	170.6	3.81	0.435	0.18	0.7	
	224	225.6	1.6	0.538	1.009	619.5	5.73	3.813	113.60	1.4	
	541	542.5	1.5	0.327	1.978	181.1	67.71	0.003	0.37	6.0	



# 2016-2019 US Gold Corp. Drill Intercepts >0.3ppm Au

Hole ID	From-m	To-m	Length-m	Au-ppm	Ag-ppm	As-ppm	Sb-ppm	Hg-ppm	Tl-ppm	W-ppm	Notes
<b>Key19-03RC</b>	91.4	96	4.6	0.954	0.196	466.0	7.99	0.305	1.39	4.2	
<b>Key19-03RC</b>	251.5	253	1.5	0.576	1.168	221.6	22.54	0.270	1.46	22.6	
<b>Key19-05RC</b>	12.2	13.7	1.5	1.361	0.197	46.1	2.33	0.011	1.04	0.6	
	36.6	38.1	1.5	0.392	0.151	39.9	2.53	0.008	1.17	0.4	
	41.1	42.7	1.6	0.336	0.083	27.2	1.63	0.005	0.51	0.7	
	47.2	48.8	1.6	0.325	0.207	23.7	4.39	0.013	1.03	0.3	
	50.3	53.3	3	0.653	0.124	18.1	2.91	0.003	2.12	0.7	
	59.4	62.5	3.1	0.412	0.043	33.3	3.15	0.004	0.44	1.3	
	172.2	173.7	1.5	0.316	0.058	58	4.25	0.087	0.09	1.3	
	187.5	199.6	12.1	0.706	0.407	58.0	35.09	0.055	0.17	1.4	Includes 3m of 1.195ppm Au
	222.5	224	1.5	0.773	0.201	394.8	174.70	0.045	1.68	0.3	
	332.2	333.8	1.6	0.78	0.067	94.6	3.53	0.055	0.21	0.7	
	365.8	367.3	1.5	0.347	0.058	74.3	5.11	0.090	0.35	0.2	
<b>Key19-06RC</b>	425.2	426.7	1.5	0.327	0.382	39.7	53.97	0.143	1.04	61	
	429.8	431.3	1.5	0.304	1.015	23.3	30.04	0.203	0.80	35.5	
	432.8	434.3	1.5	0.312	2.547	154.2	9.79	0.729	2.74	7.4	

## DEVELOPMENT PACKAGE

Exciting combination of a later stage development asset and exploration blue sky potential

## PROVEN TEAM

Top quality management and advisory team with pedigrees of developing renowned gold projects

## U.S. COMPANY

U.S. Gold Corp. is a US based company, listed on a major US Exchange – NASDAQ, with US based properties

## HIGH UPSIDE

Large growth potential for the current resource and valuation upside

---

## Contact

[ir@usgoldcorp.gold](mailto:ir@usgoldcorp.gold)  
[www.usgoldcorp.gold](http://www.usgoldcorp.gold)  
+1 800 557 4550

U.S. Gold Corp.  
1807 Capitol Avenue  
Cheyenne, WY 82001

