

August 20, 2025



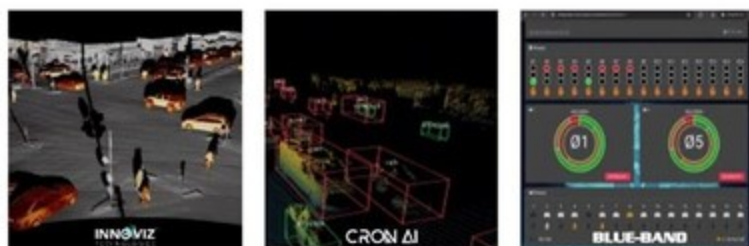
Innoviz Technologies, Cron AI, and D2 Traffic Technologies Collaborate to Accelerate LiDAR Adoption for Intelligent Intersections Across North America

- Installations throughout Intersections in the City of Atlanta, Georgia are expected in coming weeks
- Solution demonstration at ITS World Congress, August 25-29, 2025, Booths 604 & 606

SUNNYVALE, Calif. and TEL AVIV, Israel, Aug. 20, 2025 /PRNewswire/ -- [Innoviz Technologies](#) Ltd. (NASDAQ: INVZ) ("Innoviz"), Cron AI, and D2 Traffic Technologies today announced their collaboration, addressing the most pressing barriers to LiDAR deployment in intelligent transport systems (ITS), perimeter security, and infrastructure intelligence by combining their complementary technologies.



Transforming ITS with Scalable LiDAR-Perception Solutions



The collaboration unites InnovizSmart — Innoviz's rugged, automotive-grade LiDAR sensor, senseEDGE - Cron AI's edge-native 3D perception platform, and D2 Traffic Technologies' deep expertise in deployment and integration with local municipalities. The result: a set of interoperable components designed to work seamlessly together to solve three long-

standing hurdles in LiDAR adoption: unreliable perception, fragmented hardware/software stacks, and the lack of field-ready deployment tools.

Proven Performance on the Field

InnovizSMART returns 5.76 million points-per-second with a single reflection and has the capability to output two reflections effectively doubling its point rate. When combined with its 450-meter range capability, it enables long-distance vehicle and Vulnerable Road User (VRU) detection capability that is significantly higher than other sensors. When fused with Cron AI's SenseEdge software, raw LiDAR data is processed entirely at the edge, generating real-time, privacy-conscious insights without reliance on the cloud.

From Raw Data to Actionable Intelligence

D2 Traffic Technologies plays a critical role in bringing the perception stack to life on the ground — ensuring smooth integration into existing ITS and infrastructure networks and delivering turnkey deployments for agencies and operators.

BlueBand, a key partner in the ecosystem, leverages the high-fidelity fused perception data from the LiDAR and Cron's senseEDGE to build advanced analytics and dashboards through its Integrator AI platform — enabling use cases like VRU safety, wrong-way driving detection, and real-time traffic flow monitoring.

"The value we deliver starts with unmatched data fidelity," said Kevin Yorke, CEO of BlueBand. "From LIDAR to senseEDGE, we provide the gold standard data DOTs rely on — and we transform it into real-time intelligence and actionable visualizations and decision-ready insights that empower agencies to act with confidence."

Strategic Market Timing

The deployment comes at a pivotal time, with the global intelligent transportation system (ITS) market expected to reach USD 73.76 billion by 2034 (6.64% CAGR), with North America alone accounting for USD 16.67 billion in 2024 and projected to grow at 6.65% annually over the next decade.^[1]

By combining InnovizSMART's outstanding 3D performance, Cron AI's proven perception software, and D2's hands-on infrastructure integration, this suite offers a reliable, scalable, and ROI-driven pathway to LiDAR adoption in ITS, rail, security, and smart city deployments.

Intersections in Atlanta and Live Demonstration at ITS World Congress 2025

The latest generation of the D2 VIA solution is already in motion, with installation planned at three key intersections in Atlanta in coming weeks.

Innoviz Technologies Ltd., Cron AI, and D2 Traffic Technologies will jointly showcase this solution at the ITS World Congress in Atlanta, booths #604 and #606 between August 24-29.

^[1] "Intelligent Transportation System Market Size, Share, Growth 2024–2034," Precedence Research (2024)

<https://www.precedenceresearch.com/intelligent-transportation-system-market>

About Innoviz Technologies

Innoviz is a global leader in LiDAR technology, offering high-performance, automotive-grade LiDAR solutions. Innoviz has been selected by internationally recognized premium car brands for use in consumer vehicles as well as by other commercial and industrial leaders for a wide range of use cases. For more information, visit innoviz.tech.com

About Cron AI

Cron AI is a deep-tech company specializing in edge-native 3D perception for ITS, security, and smart infrastructure. Deployed across 18+ U.S. states and in Europe, its senseEDGE platform uses deep learning to transform raw LiDAR data into real-time intelligence, delivering highly accurate detection, classification and tracking — even in complex, high-density environments. www.cronai.ai

About D2 Traffic Technologies

D2 Traffic Technologies is a leading provider of intelligent traffic management solutions, dedicated to creating innovative and efficient systems that enhance urban mobility and road safety. With a focus on cutting-edge technology and exceptional customer service, D2 Traffic Technologies delivers solutions that address the evolving challenges of modern urban environments. www.d2traffic.com

Media Contact

Media@innoviz-tech.com

Investor Contact

Investors@innoviz-tech.com

Forward Looking Statements

This announcement contains certain forward-looking statements within the meaning of the federal securities laws, including statements regarding the services offered by Innoviz, the anticipated technological capability of Innoviz's products, the markets in which Innoviz operates, Innoviz's projected future operational and financial results. These forward-looking statements generally are identified by the words "believe," "project," "expect," "anticipate," "estimate," "intend," "strategy," "future," "opportunity," "plan," "may," "should," "will," "would," "will be," "will continue," "will likely result," and similar expressions. Forward-looking statements are predictions, projections and other statements about future events that are based on current expectations and assumptions and, as a result, are subject to risks and uncertainties.

Many factors could cause actual future events, and in the case of our forward-looking revenues, actual orders or actual payments, to differ materially from the forward-looking statements in this announcement including but not limited to, the ability to implement business plans, forecasts, and other expectations, the ability to convert design wins into definitive orders and the magnitude of such orders, the ability to identify and realize additional opportunities, potential changes and developments in the highly competitive LiDAR technology and related industries, and our expectations regarding the impact of the

evolving conflict in Israel to our ongoing operations. The foregoing list is not exhaustive. You should carefully consider such risk and the other risks and uncertainties described in Innoviz's annual report on Form 20-F for the year ended December 31, 2024, filed with the U.S. Securities and Exchange Commission ("SEC") on March 12, 2025 and in other documents filed by Innoviz from time to time with the SEC. These filings identify and address other important risks and uncertainties that could cause actual events and results to differ materially from those contained in the forward-looking statements. There can be no assurances that the Company will enter into definitive agreements, orders or receive payments with respect to the security infrastructure upgrade project referenced in this announcement, which is pending successful testing and demonstration. Forward-looking statements speak only as of the date they are made. Readers are cautioned not to put undue reliance on forward-looking statements, and Innoviz assumes no obligation and does not intend to update or revise these forward-looking statements, whether as a result of new information, future events, or otherwise. Innoviz gives no assurance that it will achieve its expectations.

Photo - https://mma.prnewswire.com/media/2754403/Innoviz_Technologies_ITS.jpg

Logo - https://mma.prnewswire.com/media/1496323/Innoviz_Technologies_Logo.jpg



View original content to download multimedia: <https://www.prnewswire.com/news-releases/innoviz-technologies-cron-ai-and-d2-traffic-technologies-collaborate-to-accelerate-lidar-adoption-for-intelligent-intersections-across-north-america-302534511.html>

SOURCE Innoviz Technologies