

The background of the slide is a photograph of Fenway Park in Boston. The iconic green marquee is visible, displaying "FENWAY PARK HOME OF THE BOSTON RED SOX" in red lettering. A large red Sox sock logo is also visible on the left side of the marquee. The sky is clear and blue.

Evolv Technology



2023 Analyst Day

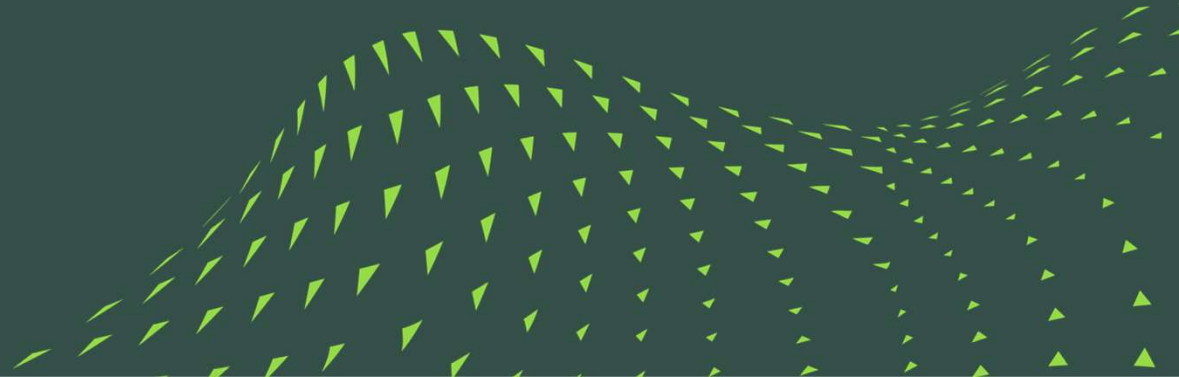
May 25, 2023 | Boston, Massachusetts



# Building the Technical Moat

**Dr. Alec Rose**

Chief Scientist



# Alec Rose



Over 10 years experience in the development of advanced and proprietary security screening solutions



Ph.D. Electrical  
and Computer  
Engineering



**Chief  
Scientist**

Chief  
Technology  
Officer

Director of  
Advance  
Development



# How our Technical Journey Started in 2013...



*There was a disconnect  
between the problem  
and the available technology*

Since metal detectors were invented:

- *The threat landscape had changed*
- *Consumer electronics had undergone a revolution*

# The Industry's Strongest IP Library

Accrued  
Portfolio of  
>100  
Patents

Highlighted by  
contributions to:

Robust Operation and  
Interference Suppression

Threat Discrimination

Biometrics

Autonomous and Human  
Assisted Decision Making

Radar Imaging and  
Real-time Reconstruction

(19) <b>United States</b>	
(12) <b>Patent Application Publication</b>	(10) Pub. No.: <b>US 2023/0071806 A1</b>
Rose	(43) Pub. Date: <b>Mar. 9, 2023</b>
(54) <b>SUPPRESSION OF INTERFERENCE IN THREAT DETECTION</b>	(52) U.S. CL. CPC ..... <b>G01V 3/10</b> (2013.01)
(71) Applicant: Evolv Technologies, Inc., Waltham, MA (US)	(57) <b>ABSTRACT</b> A method includes receiving data characterizing a signal

(12) <b>United States Patent</b>	
Ellenbogen et al.	(10) Patent No.: <b>US 11,568,734 B2</b>
	(45) Date of Patent: <b>Jan. 31, 2023</b>
(54) <b>PERSONNEL INSPECTION WITH THREAT DETECTION AND DISCRIMINATION</b>	(58) Field of Classification Search CPC : G06B 23/00; G06B 5/22; G01V 3/08; G01V 3/10; G01V 3/17; G06F 7/72;
(71) Applicant: Evolv Technologies, Inc., Waltham, MA (US)	(Continued)

(19) <b>United States</b>	
(12) <b>Patent Application Publication</b>	(10) Pub. No.: <b>US 2022/0262185 A1</b>
Ellenbogen et al.	(43) Pub. Date: <b>Aug. 18, 2022</b>
(54) <b>IDENTITY DETERMINATION USING BIOMETRIC DATA</b>	(52) U.S. CL. CPC ..... <b>G07C 9/253</b> (2020.01); <b>G07C 9/27</b> (2020.01)
(71) Applicant: Evolv Technologies, Inc., Waltham, MA (US)	

(19) <b>United States</b>	
(12) <b>Patent Application Publication</b>	(10) Pub. No.: <b>US 2017/0098161 A1</b>
Ellenbogen et al.	(43) Pub. Date: <b>Apr. 6, 2017</b>
(54) <b>AUGMENTED MACHINE DECISION MAKING</b>	Publication Classification
(71) Applicant: Evolv Technologies, Inc., Waltham, MA (US)	(51) Int. CL. <b>G06N 5/02</b> (2006.01)
	(52) U.S. CL. CPC ..... <b>G06N 5/022</b> (2013.01)

(19) <b>United States</b>	
(12) <b>Patent Application Publication</b>	(10) Pub. No.: <b>US 2016/0291148 A1</b>
Ellenbogen et al.	(43) Pub. Date: <b>Oct. 6, 2016</b>

(12) <b>United States Patent</b>	
Rose	(10) Patent No.: <b>US 10,541,472 B2</b>
	(45) Date of Patent: <b>Jan. 21, 2020</b>
(54) <b>MODULAR IMAGING SYSTEM</b>	
(71) Applicant: Evolv Technologies, Inc., Waltham, MA (US)	

(54) <b>BEAM FORMING WITH A PASSIVE FREQUENCY DIVERSE APERTURE</b>	
(71) Applicant: Evolv Technologies, Inc., Waltham, MA (US)	

(12) <b>United States Patent</b>	
Rose	(10) Patent No.: <b>US 10,725,153 B2</b>
	(45) Date of Patent: <b>Jul. 28, 2020</b>

(54) <b>PARTITIONING FOR RADAR SYSTEMS</b>	13/89; G01S 15/89; G01S 7/04; G01S 13/888; G06T 5/04; G06T 15/08; G06T 15/10; H01Q 21/00; G06K 9/3241
(71) Applicant: Evolv Technologies, Inc., Waltham, MA (US)	USPC: 342/424



# How Evolv Express® Works

- Custom EM sensor suite
- Multiple synchronized camera streams
- Dedicated IoT link
- Growing ecosystem of integrations



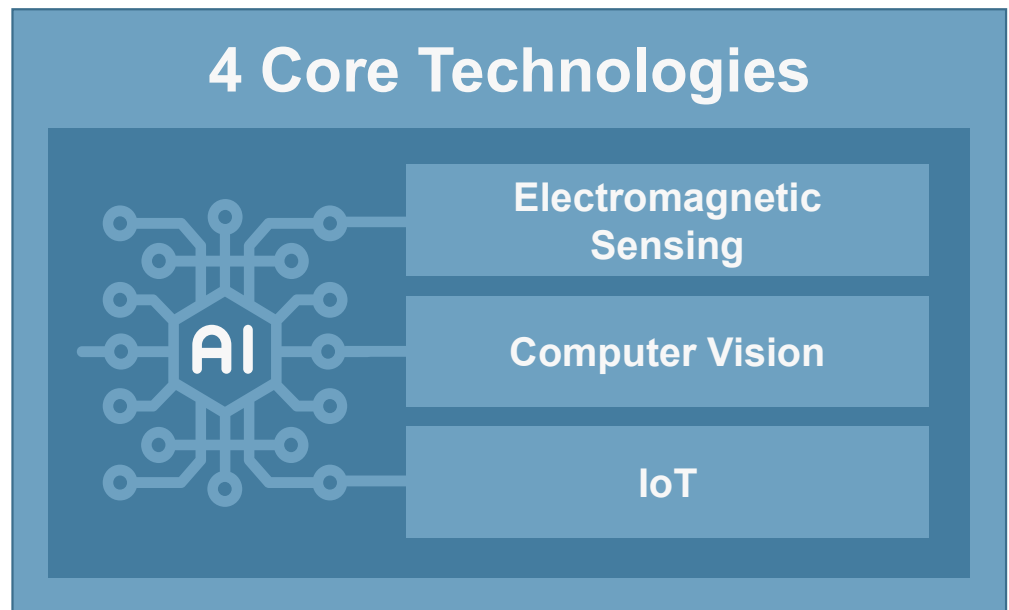
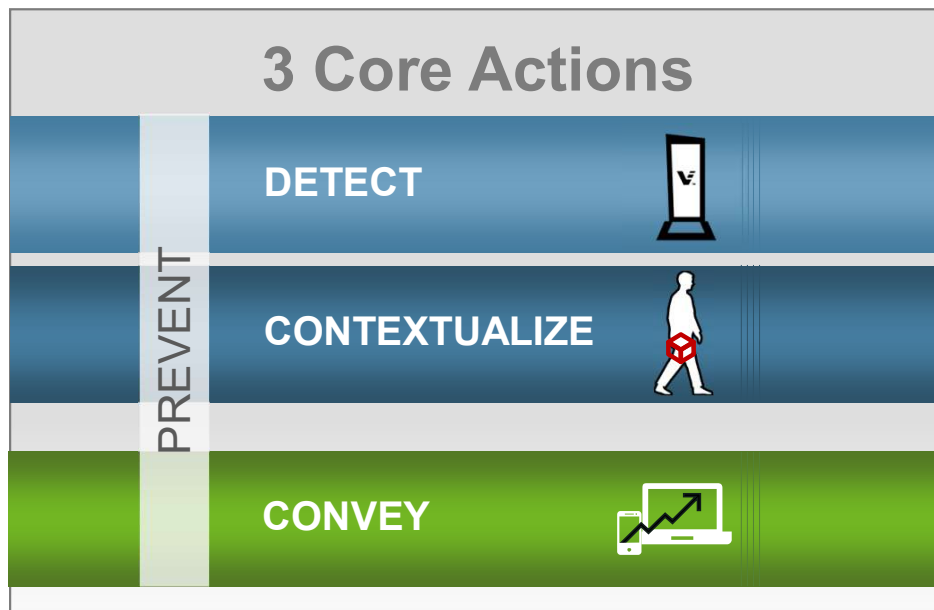
**600M+** Visitors Screened



# Evolv AI



# Evolv Digital Platform





# Electromagnetic Sensing



Electromagnetic Sensing

Computer Vision

IoT



Conventional  
Metal “Detection”



Copyright 2018 Evolv Technologies, Inc.

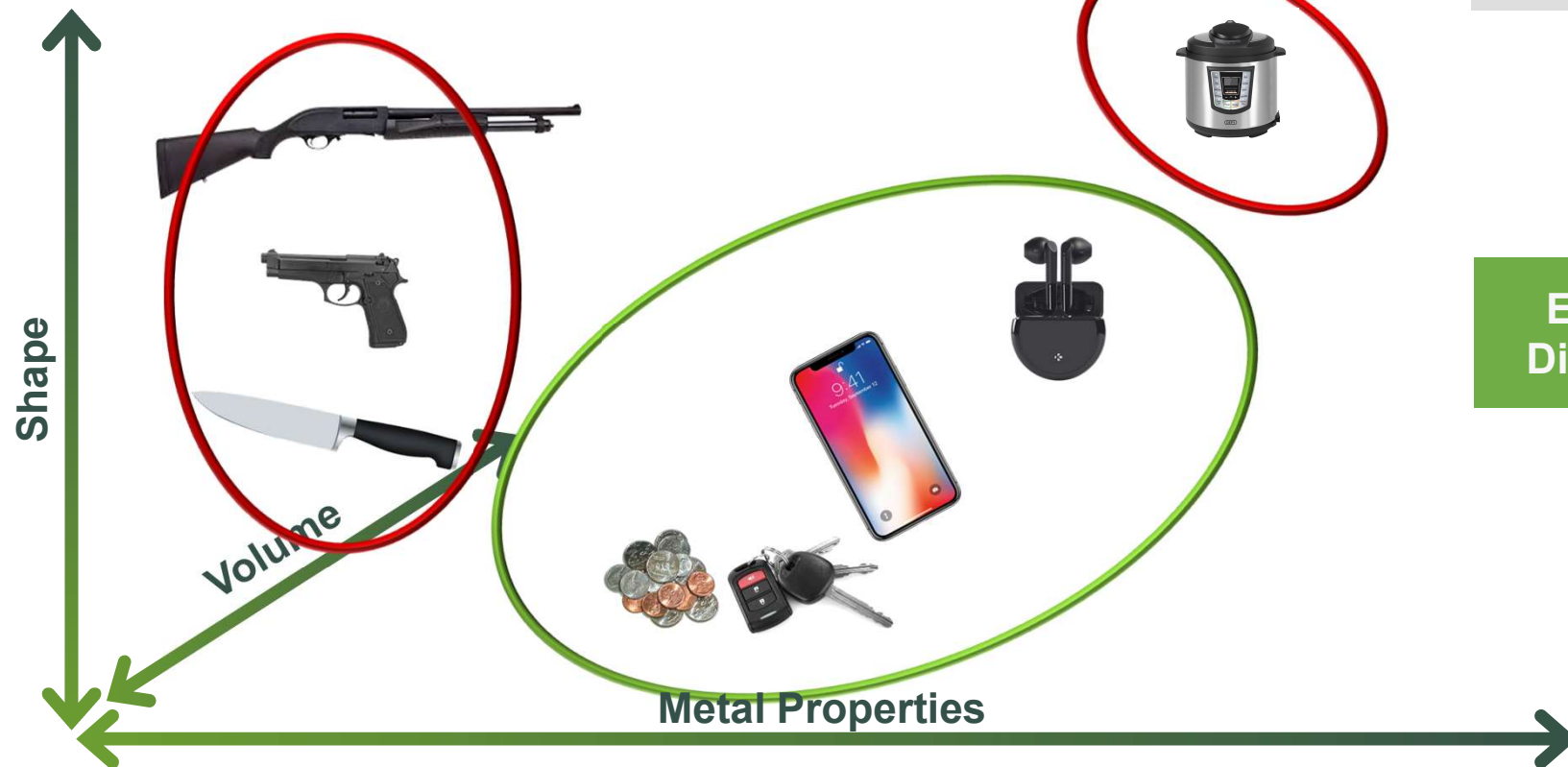
# Electromagnetic Sensing



Electromagnetic Sensing

Computer Vision

IoT



**Evolv Threat  
Discrimination**

Copyright 2018 Evolv Technologies, Inc.

# Electromagnetic Sensing

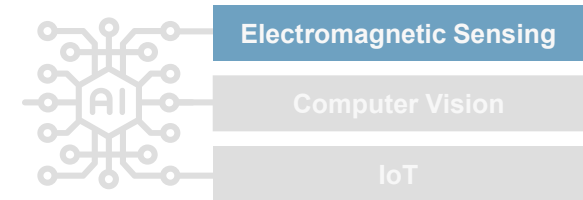
- RF sensor suite built from the ground up
- Tracks objects and aggregates data over a 3D volume
- Proprietary real-time algorithms that pinpoint threats out of the crowd

---

**Custom and multifaceted detection to bring screening to the speed of life**



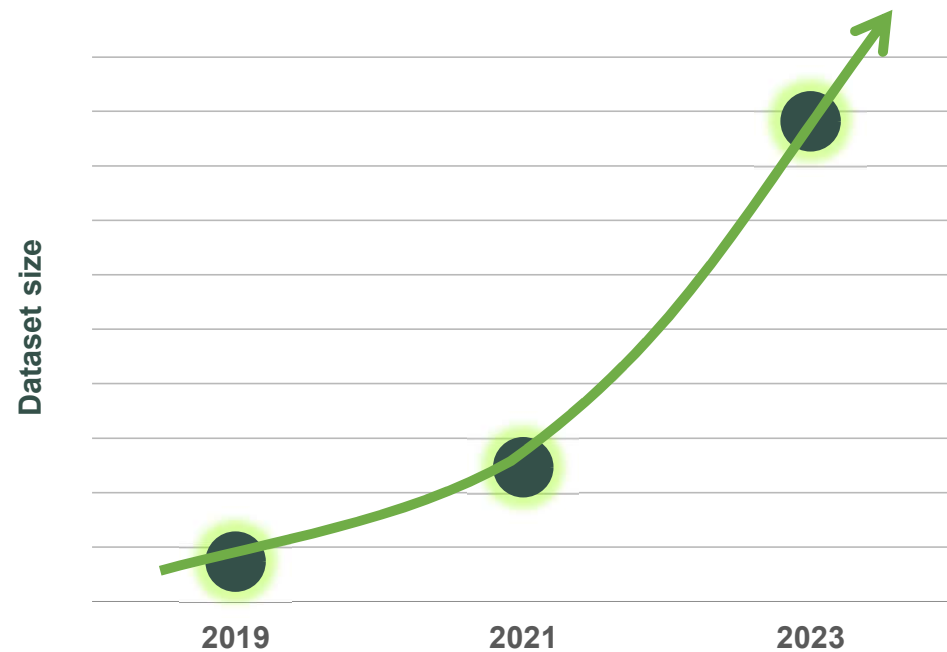
# Electromagnetic Sensing



Continually expanding  
our training datasets

Further optimizing  
the RF spectrum

Re-packaging in  
new form factors



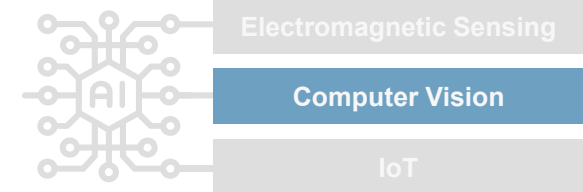


# Computer Vision

Optimizing the human/machine interaction via

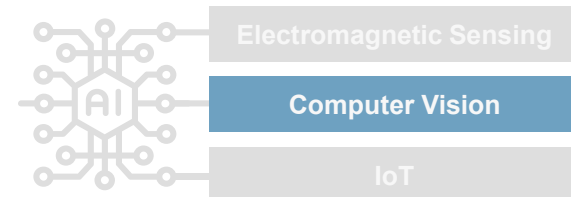
- Positive identification of alarming individual
- Directed search of alarming object

**Up to 6 cameras per system, synchronized directly to the EM sensors**

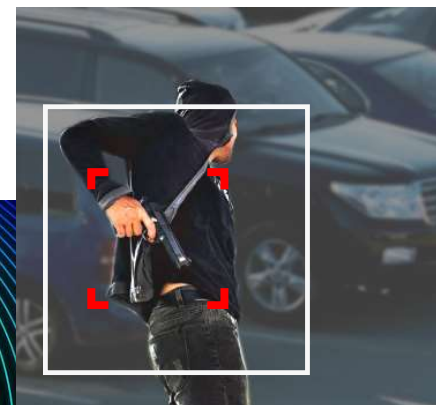


# Computer Vision

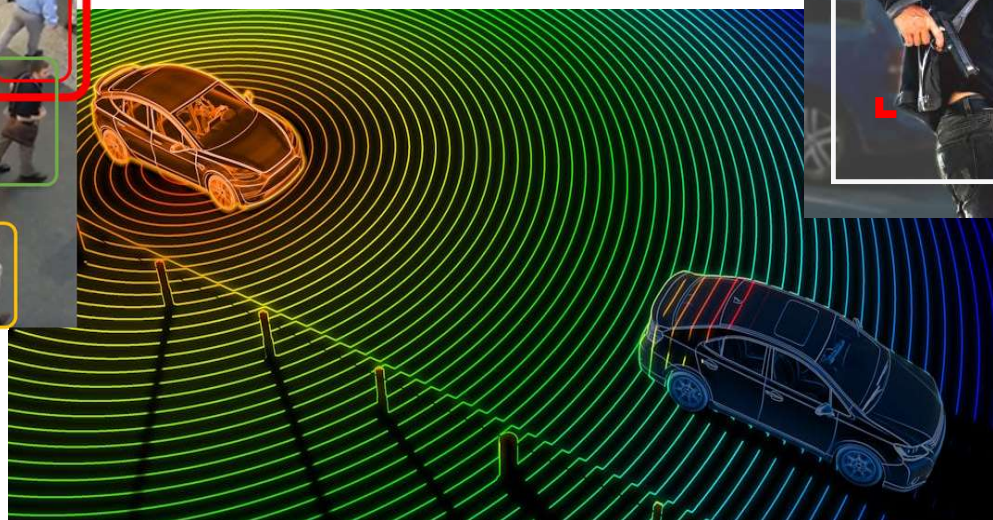
Advancing depth perception and edge computation to explore



Branded  
firearm detection

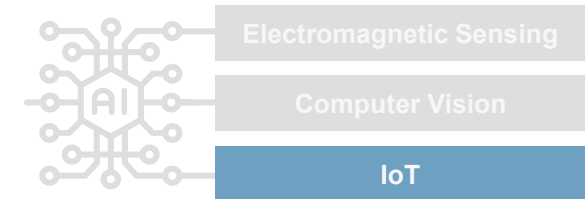


Enhanced UIs via  
layered visual context

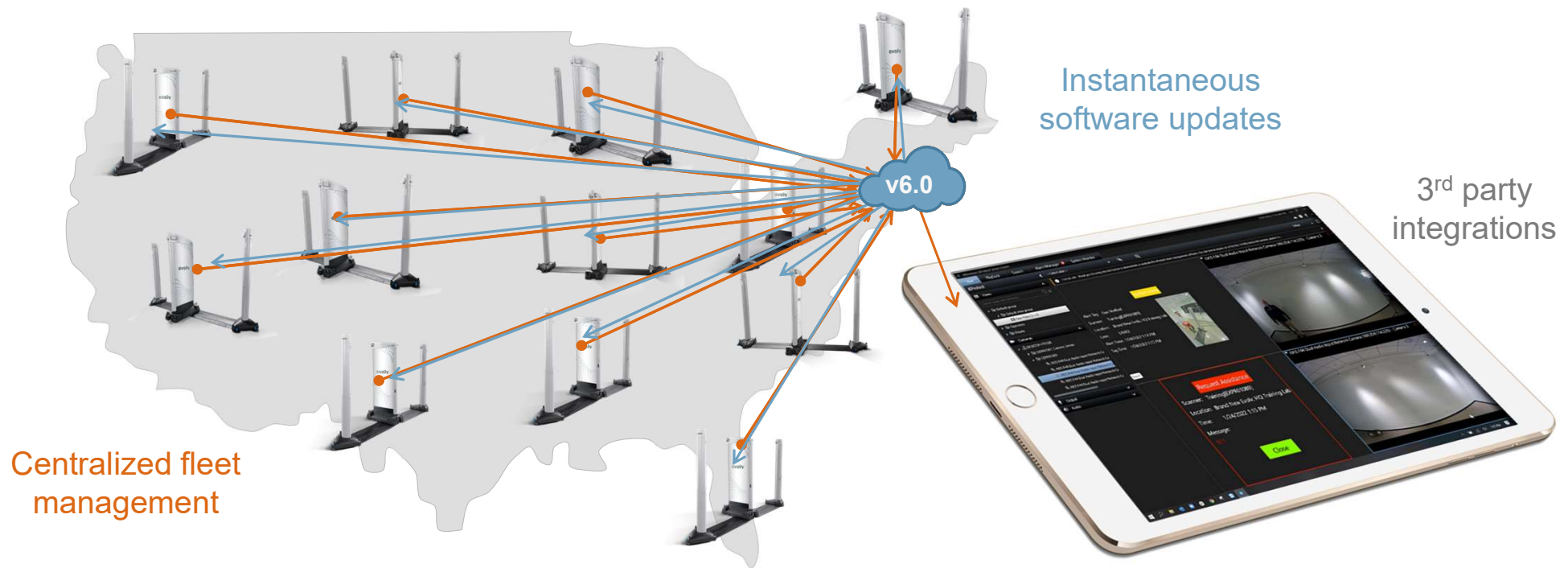


3D vs 2D:  
moving towards  
“human” vision

# IoT



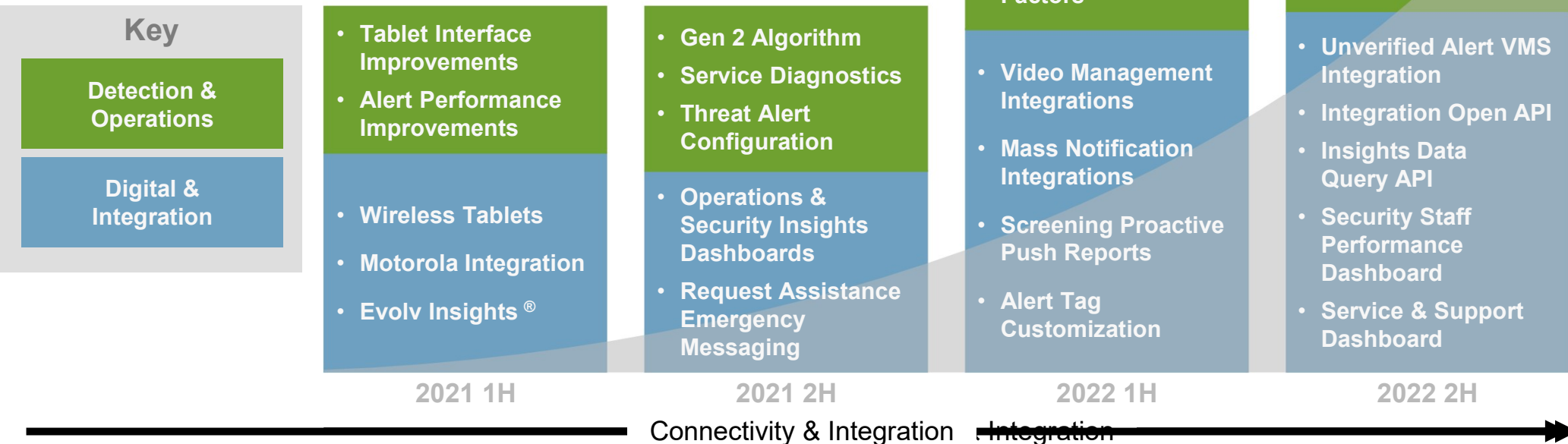
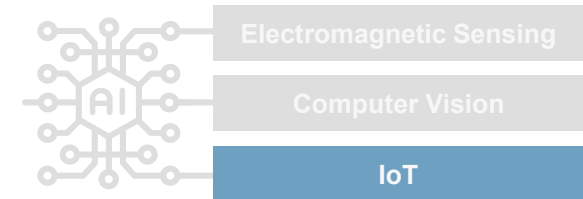
The first-of-its-kind connected physical security fleet, and it's growing... **FAST**



# IoT

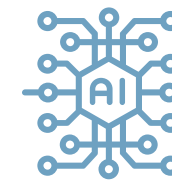
## SaaS

Track record of continual innovation  
and delivering software releases





# Artificial Intelligence



Electromagnetic Sensing

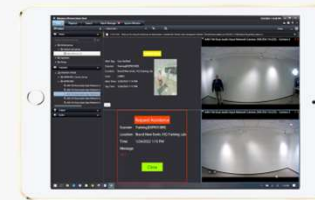
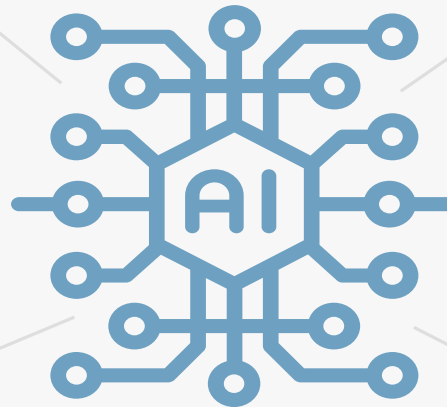
Computer Vision

IoT



**multimodal  
sensor streams**

**2,800** Subscriptions



**1M+**

Visitors screened daily



**600+** Customers

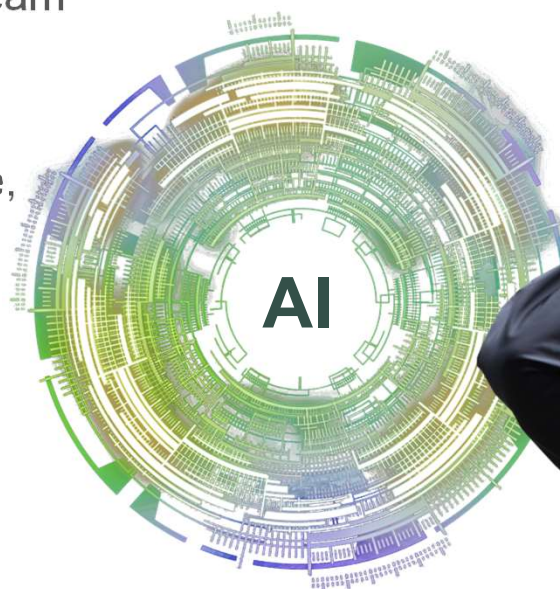
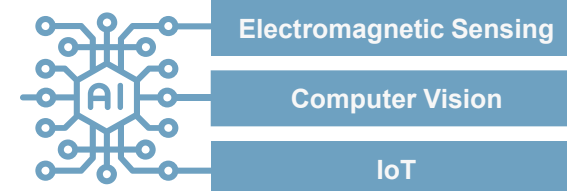


**600M+**

Visitors  
scanned

# Evolv's AI North Star

- To give every venue the sight, senses, and intelligence of a trained and vigilant security team
- To remove the tedium from visitors and security staff alike, so humans can get back to the human things





# Bring Prevention Beyond the Threshold





# Thank You

[evolvtechnology.com](http://evolvtechnology.com)

