

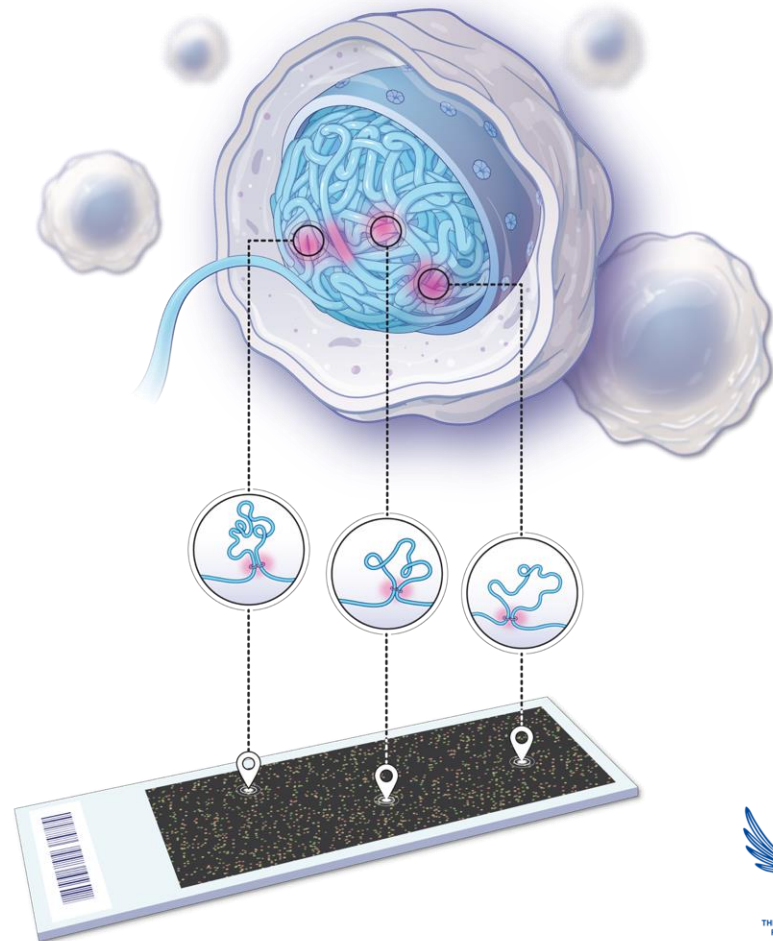


Commercializing 3D Gene Regulation for  
Precision Medicine with EpiSwitch®

Company Presentation

October 2023

[www.myOBDX.com](http://www.myOBDX.com)



# Corporate Presentation Disclaimer

The information contained in these slides and this presentation is being supplied to you by Oxford Biodynamics plc (the "**Company**") solely for your information and may not be reproduced or redistributed in whole or in part to any other person. For the purposes of this document, the presentation that follows (the "**Presentation**") shall mean and include the slides that follow, the oral briefing provided by the Company in connection with the slides, the question-and-answer session that follows that oral presentation, hard copies of this document and any materials distributed at, or in connection with the Presentation, or any of them. The Presentation is strictly confidential, may not be distributed to the press or any other person, may not be copied or reproduced in any form and may not be published, in whole or in part, for any purpose. Failure to comply with this restriction may, inter alia, constitute a violation of applicable securities laws.

The Presentation does not constitute a recommendation regarding the ordinary shares of the Company ("**Ordinary Shares**"). This Presentation does not constitute, and the Company shall not be construed as giving investment, legal or tax advice to any recipient. Recipients of the Presentation should conduct their own investigation, evaluation and analysis of the business and data described therein. The Presentation does not constitute or form part of any offer for sale or subscription for any offer to buy or subscribe for any securities nor shall it or any part of it form the basis of or be relied upon in connection with any contract or commitment whatsoever. There shall not be any sale of any securities in any jurisdiction in which such offer, solicitation or sale would be unlawful prior to registration or qualification under the relevant securities laws of any such jurisdiction. The Presentation does not purport to be a prospectus, to be complete or to contain all of the information you may desire.

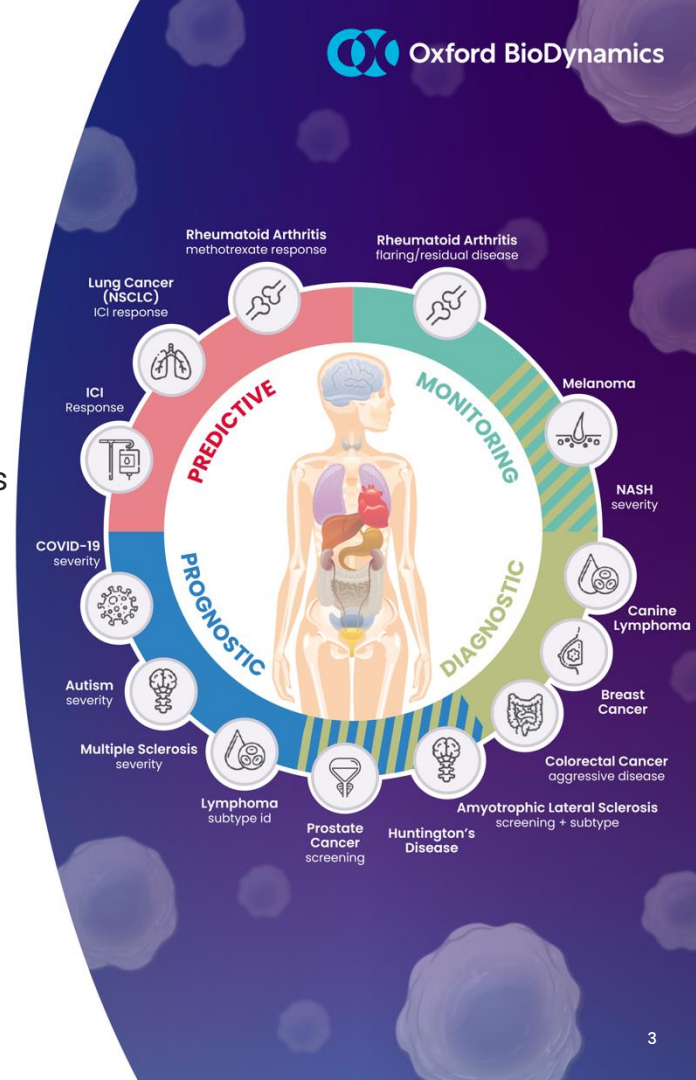
Whilst all reasonable care has been taken to ensure that the facts stated in the Presentation are accurate and that any forecasts, opinions and expectations contained therein are fair and reasonable, no reliance whatsoever should be placed on them. Accordingly, no representation or warranty express or implied is made as to the fairness, accuracy, completeness of the Presentation and each recipient of the Presentation must make its own investigation and assessment of the matters contained therein. No responsibility or liability whatsoever is accepted by any person for any loss howsoever arising from any use of, or in connection with, the Presentation or its contents or otherwise arising in connection therewith. In issuing this Presentation, the Company does not undertake any obligations to update or to correct any inaccuracies which may become apparent in these presentation materials. This Presentation is being supplied to you for your own information and may not be distributed, published, reproduced or otherwise made available to any other person, in whole or in part, for any purposes whatsoever. In particular, it should not be distributed to or otherwise made available to persons in any jurisdiction where such distribution or availability may lead to a breach of any law or regulatory requirements. This Presentation has not been approved for any legislative, regulatory or other purpose (and in particular have not been approved by an authorised person pursuant to section 21 of the United Kingdom's Financial Services and Markets Act 2000 or any analogous regulation in any other jurisdiction). The Presentation is being distributed only to and is only directed at persons to whom it may be lawfully distributed (all such persons together being referred to as "**Relevant Persons**"). Any person who is not a Relevant Person should not act or rely on the Presentation or any of its contents. By accepting this Presentation and not immediately returning it, the recipient is deemed to represent and warrant that: (i) they are a Relevant Person entitled to receive the Presentation; and (ii) they have read, agree and will comply with the contents of this notice.

This Presentation may contain forward-looking statements that reflect the Company's current expectations regarding future events. These statements may include the words "believe", "expect", "anticipate", "intend", "plan", "estimate", "project", "will", "may", "targeting" and similar expressions as well as statements other than statements of historical facts including, without limitation, the Company's liquidity and results of operations as well as the Company's working capital requirements and future capital raising activities. Forward-looking statements involve risks and uncertainties. Actual events could differ materially and adversely from expectations embodied in forward-looking statement and depend on a number of factors, some of which may be beyond the Company's control. Such forward-looking statements have not been independently verified. Given these uncertainties, one should not place undue reliance on these forward-looking statements. The forward-looking statements in this Presentation speak only as of the date of this Presentation and the Company does not assume any obligation to update or revise any forward-looking statements, whether as a result of new information or future events or otherwise, unless it is required to do so by law.

The disclaimer will not exclude any liability for, or remedy in respect of, fraudulent misrepresentation. By accepting this Presentation and not immediately returning it you agree to be bound by and accept these terms.

# Snapshot of OBD and Where We are Today

- **Founded** in 2007 out of Oxford University, listed in 2016 (AIM:OBD)
- **New management team** onboard since March 2020
- **A global leader** in 3D genomics with proprietary blood testing technology platform that links to clinical outcomes
- **Advancing personalized healthcare** by developing precision medicine tests for life-changing diseases.
- **Large addressable markets:** can impact outcomes in many diseases
- ❖ **Commercial progress** since Feb 2022 with the launch of the Checkpoint inhibitor Response Test (CiRT™)
- ❖ **Unique CPT/PLA code** received in record time, coded by Oct 1 2022
- ❖ **Reimbursement** achieved at expected levels – ASP \$2000 – \$2500
- ❖ **Early adopter traction** in 2022 (peer-to-peer sales approach)
- ❖ **Record monthly sales** recorded in March, April, May and June 2023
- ❖ **BUPA partnership announced** Oct 18, 2023
- ✓ **Prostate Screening EpiSwitch** (PSE test) launch in Sept 23
- ✓ **Unique CPT/PLA code** received in record time, coded by Jan 1 2024



# Oxford BioDynamics (AIM:OBD)

## 3D Genomics Experts

- Developing and commercializing precision medicine tests for life changing diseases.
- Focus on 3D Genomics links to clinical outcomes.
- Deep pipeline of deployable molecular diagnostic tests
- Patent estate of 18 patent families
- Member of Foundation of NIH Biomarker Steering Committees
  - Oncology, Immunology & Inflammation, Neuroscience and Metabolics
- Awarded 2 PACT Grants to bring EpiSwitch® platform as the industry standard for 3D genomics
  - 2021 Analysis of primary and acquired resistance to ICI therapy
  - 2023 IO-triggered Hyper-Progressive Disease (HPD)



Genentech



EMD  
SERONO



Biogen.



MAYO CLINIC



MASSACHUSETTS  
GENERAL HOSPITAL

## Global Offices & Facilities



UK | Corporate HQ, Tech Centre  
Oxford, UK

USA | Oxford BioDynamics, Inc.  
Gaithersburg, MD USA  
Commercial Team

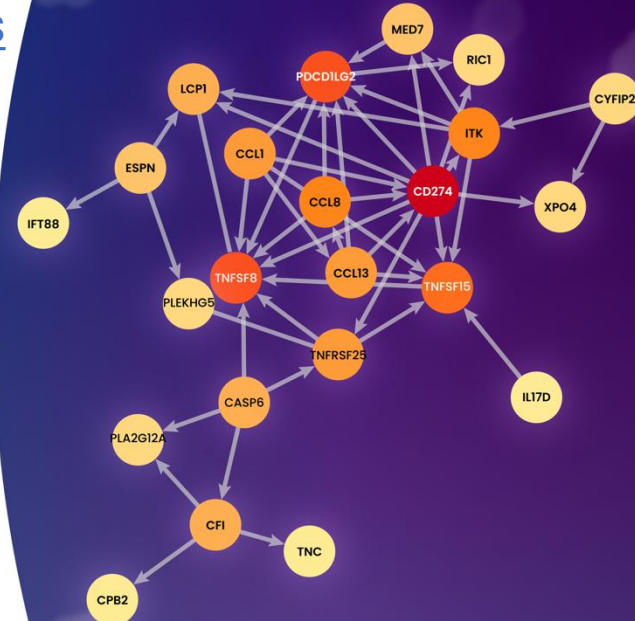
USA | Oxford BioDynamics, Inc.  
Frederick, MD USA  
Clinical Testing Lab

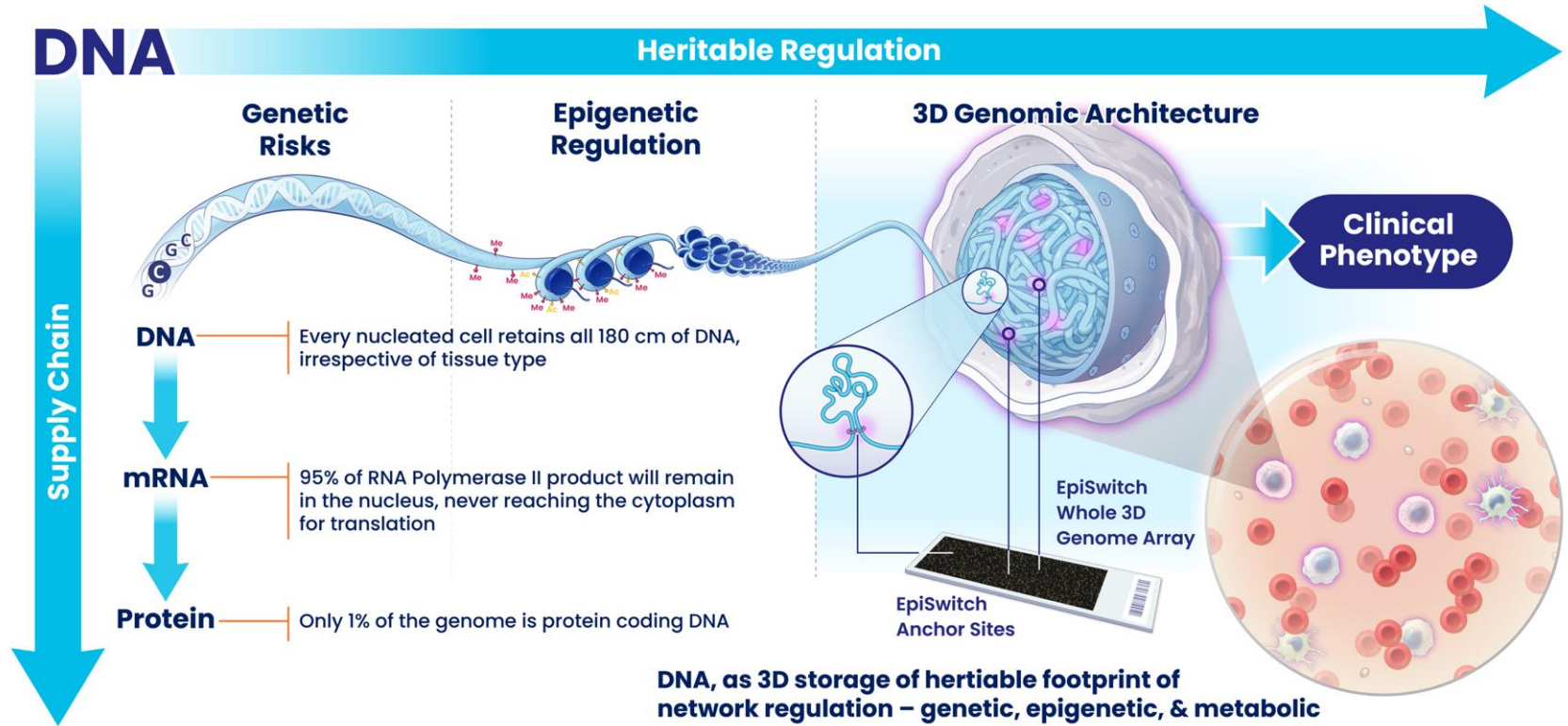
Asia | Reference lab  
Penang, Malaysia

# Oxford BioDynamics (AIM:OBD)

## World Leading 3D Genomics Technology

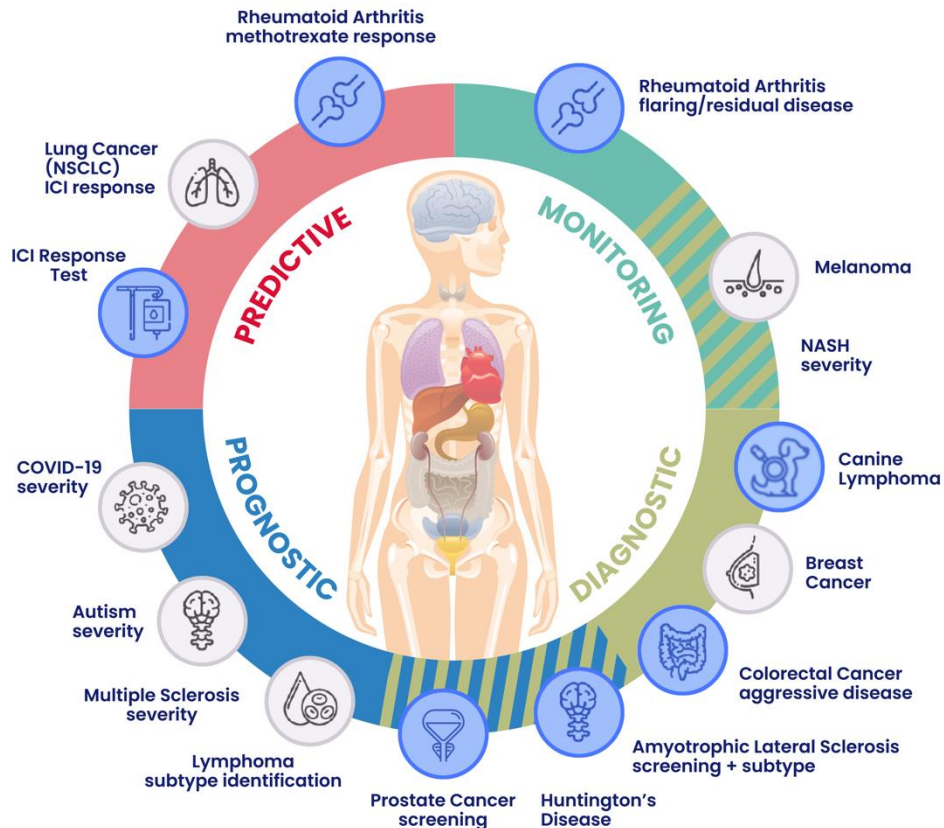
- Focus on 3D Genomics links to clinical outcomes
- EpiSwitch KnowledgeBase™
  - Largest curated 3D genomics database
  - 15,000+ samples, 30+ diseases, 1 Billion datapoints
- Proprietary bioinformatic tools for 3D genomic analyses
  - ✓ 3D Genomic EpiSwitch® blood-based biomarkers
  - ✓ Checkpoint Inhibitor Response Test (CiRT)
  - ✓ Prostate Screening EpiSwitch (PSE) Test
  - ✓ Future pipeline includes Colorectal/Bowel Cancer
  - ✓ and Veterinary Medicine Products in Development





3D genome as the molecular regulatory network underlying cellular phenotypes

# Deep Pipeline of Blood Tests Moving Towards Clinical Testing in Large Addressable Markets



## PRODUCT DEVELOPMENT PORTFOLIO

### EPISWITCH® TEST PRODUCTS

### THERAPEUTIC AREA



#### Prostate Cancer

Blood-based molecular diagnostic screening test for early detection and staging of Prostate Cancer  
 - Ongoing comparative study screening patients with EpiSwitch, alongside other methodologies e.g., PSA tests, MRI, ultrasound.

#### Oncology



#### Colorectal/bowel cancer

Blood-based molecular diagnostic screening test for early detection and staging of CRC

#### Oncology



#### Veterinary Medicine

Diagnostic test for lymphoma in dogs  
 OBD is continuing to expand to other dog blood cancers & soft tissue tumors (lymphomas, leukaemias, sarcomas)

#### Animal Health



#### Rheumatoid Arthritis (RA)

Predict response to methotrexate (MTX) therapy  
 BioFlare - Assess flaring/residual disease monitoring

#### Inflammation

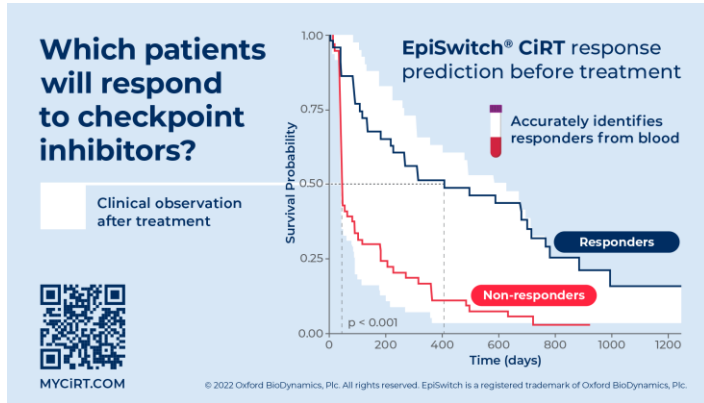


#### Amyotrophic Lateral Sclerosis (ALS)

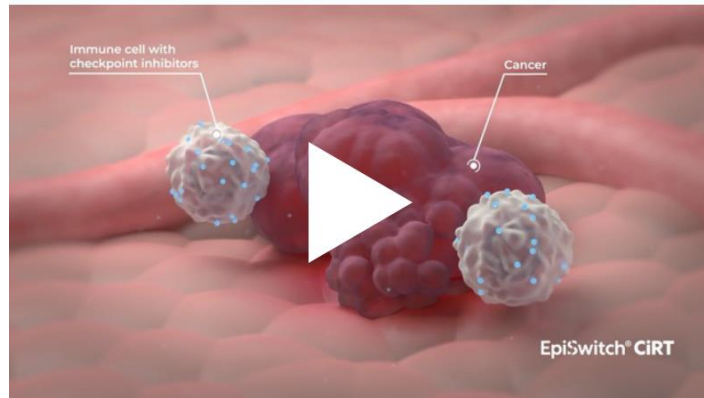
Diagnostic & prognostic test  
 (Currently part of US trial sponsored by Mitsubishi TPA)

#### CNS/Neurological

# EpiSwitch® CiRT – Clinically Validated Fast-Turnaround Blood Test



- ❖ The only predictive blood test that determines a patient's most likely response to checkpoint inhibitors.
- ❖ CiRT is fast, accurate, and easily identifies an individuals most likely response to checkpoint inhibitor immunotherapy using a routine blood test.



Home | About | Contact Us

## EpiSwitch® CiRT

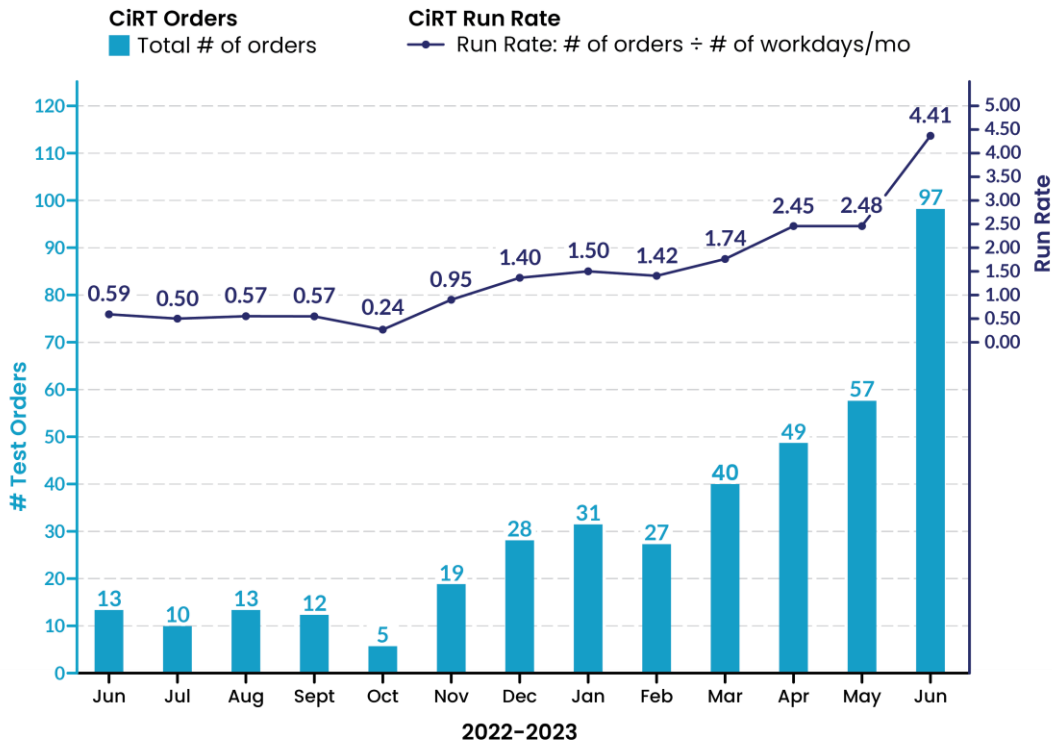
Benefits | Sample Report | Results | Guide | Offer the Test | FAQ

Only one test predicts how a patient will respond to immune checkpoint-inhibitor (ICI) therapies:

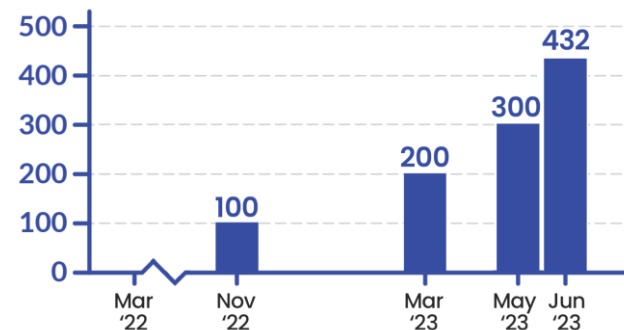
### EpiSwitch Checkpoint-inhibitor Response Test (CiRT)

[OFFER THE TEST](#)

# Commercial Update: CiRT Sales Growth

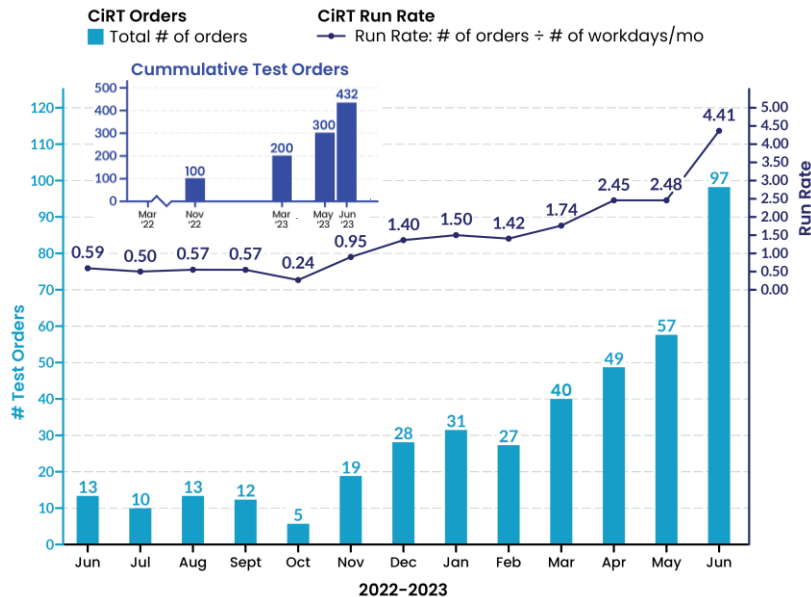


## Cumulative test orders



## Sales Momentum

# Now Moving into Peer-to-Peer (P2P) Sales Stage



This week we kicked off a series of clinical advisory board meetings from New York to Florida along the east coast. We're discussing the challenges oncologists face using [#immunotherapy](#) and how [EpiSwitch CiRT](#) can help navigate treatment decision-making. Honored and grateful to receive advice from key opinion leaders at [MedStar Health](#), [American Oncology Network, LLC](#), [Luminis Health](#), and more. [#oncology](#)



## 5 Clinical Advisory Boards since May 20th:

- **2 Florida**
- **2 DMV**
- **1 NYC**

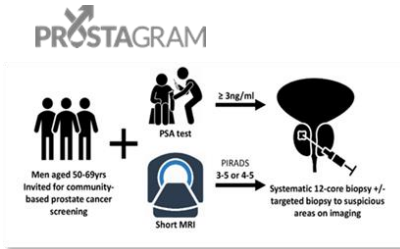
## Doctor engagement: P2P

- April - 27 docs; June to date - 47 docs

# **Prostate Screening EpiSwitch (PSE) Test was launched ahead of schedule Sept 2023**

# The Prostate Screening EpiSwitch® (PSE) Test

- Prostate cancer (PCa) occurs in one out of six men during their lifetime. It is often diagnosed late
- The widely used prostate-specific antigen (PSA) blood test is inaccurate with low positive predictive value (PPV 14-25%) which means a high level of false positives
- This results in many unnecessary prostate biopsies in men. Up to 75% of men biopsied **do not** have cancer
- Data from the Prostagram trial published in the high-impact, peer-reviewed journal *Cancers* shows OBD's new PSE blood test is rapid, minimally invasive, accurate and has high predictive value



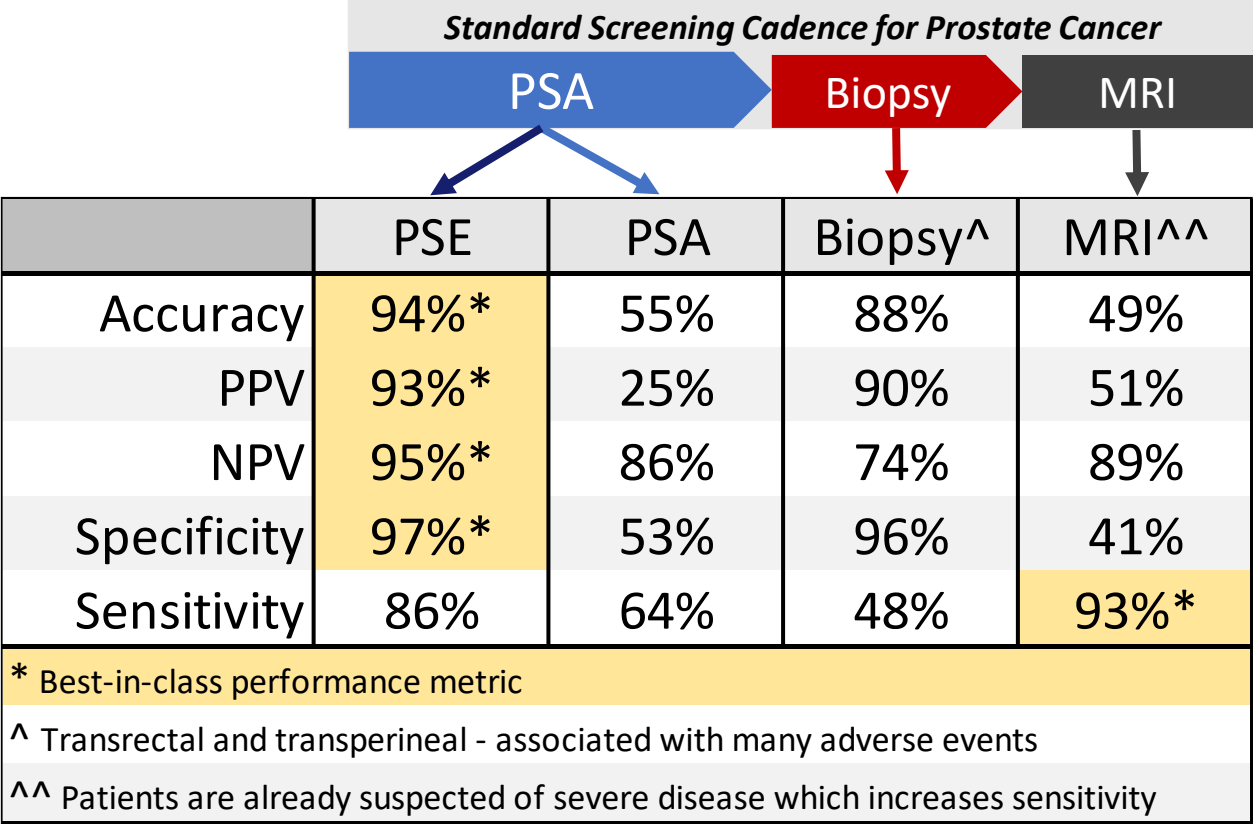
- PROSTAGRAM NHS study, 109 patients**
- Imperial College NHS Trust, 38 patients**
- Multivariate non-invasive classifier PSE (PSA and EpiSwitch):
  - **PPV 0.93**
  - **NPV 0.95**
- Currently PSA alone: PPV **0.14**, NPV 0.93
- Rapid, accurate, non-invasive**

- Accuracy (94%), PPV (94%), and NPV (95%) reported
- This could reduce the number of unnecessary biopsies by 75% and reassure men that they are clear
- In US 47M men aged 50-74, and 25M PSA tests p.a.. In UK 9M men aged 50-74 (<10% tested)

# Adverse Events Documented from Prostate Biopsy Studies

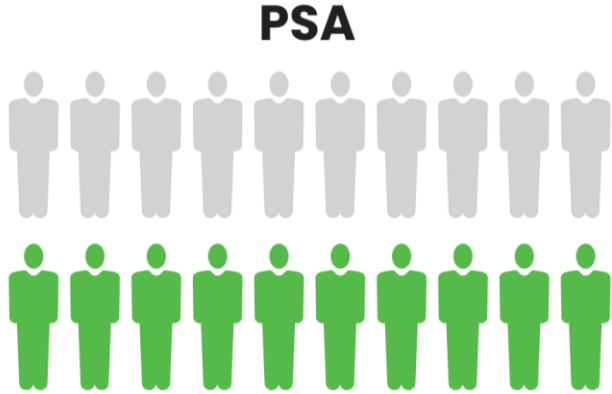
- 40% of men experience a complication from a prostate biopsy procedure.<sup>7</sup>
- 9.1% of men ended up visiting an Emergency Department after the procedure.<sup>7</sup>
- 6.9% of men are hospitalized within 30-days of biopsy. Prostate biopsy is associated with a significant increased risk of hospitalization, serious infectious and non-infectious complications.<sup>8</sup>
- Rectal bleeding = 45%<sup>9</sup>
- Hematospermia = 65.8%<sup>10</sup>
- Incontinence = 6.7%<sup>7</sup>
- Erectile dysfunction = 8%-33%<sup>11</sup>
- Despite antimicrobial prophylaxis, infectious complications are increasing over time and are the most common reason for hospitalization after biopsy.<sup>12</sup>
- Biopsy mortality is rare but can occur.<sup>13</sup>
  - 0.1% (6 of every 6000 procedures results in death, within 120 days post biopsy).<sup>13</sup>

# Prostate Cancer Screening – Modality Performance



# The EpiSwitch PSE Advantage

## Overall Accuracy of Prostate Cancer Detection Blood Tests (Correct Diagnosis Rate)



**10 in 20** men with high or low PSA  
get the correct diagnosis



**19 in 20** men with PSE would  
get the correct diagnosis

# The EpiSwitch PSE Advantage

## Positive Predictive Values of Prostate Cancer Detection Blood Tests (False Positive Rate)

**PSA**



**15 in 20** men with high PSA (>4 ng/ml) are negative for cancer after invasive biopsy

**EpiSwitch<sup>®</sup> PSE**



**1 in 20** men with positive PSE would be negative for cancer after invasive biopsy

# Snapshot of OBD and Where We are Today

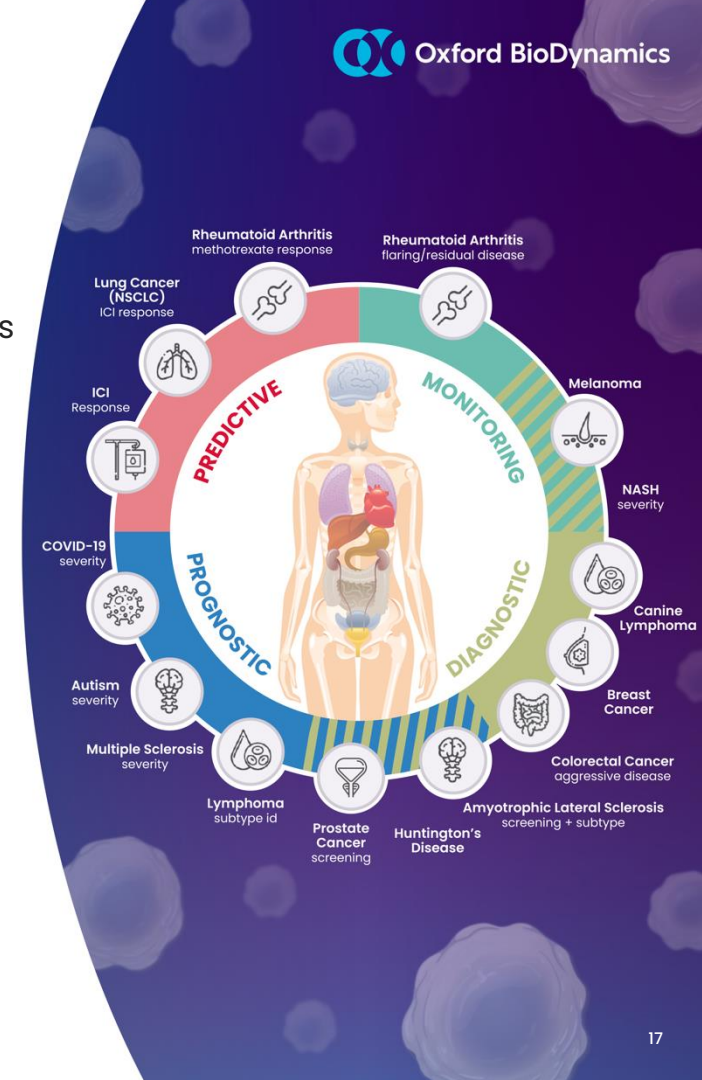
- New management team onboard since March 2020
- A global leader in 3D genomics with proprietary blood testing technology platform that links to clinical outcomes
- Large addressable markets: can impact outcomes in many diseases

#

- ✓ Commercial progress since Feb 2022 with the launch of the Checkpoint inhibitor Response Test (CiRT™)
- ✓ Unique CPT/PLA code received in record time, coded by Oct 1 2022
- ✓ Reimbursement achieved at expected levels – ASP \$2000 – \$2500
- ✓ Early adopter traction in 2022 (peer-to-peer sales approach)
- ✓ Record monthly sales recorded in March, April, May and June 2023
- ✓ BUPA partnership announced Oct 18, 2023

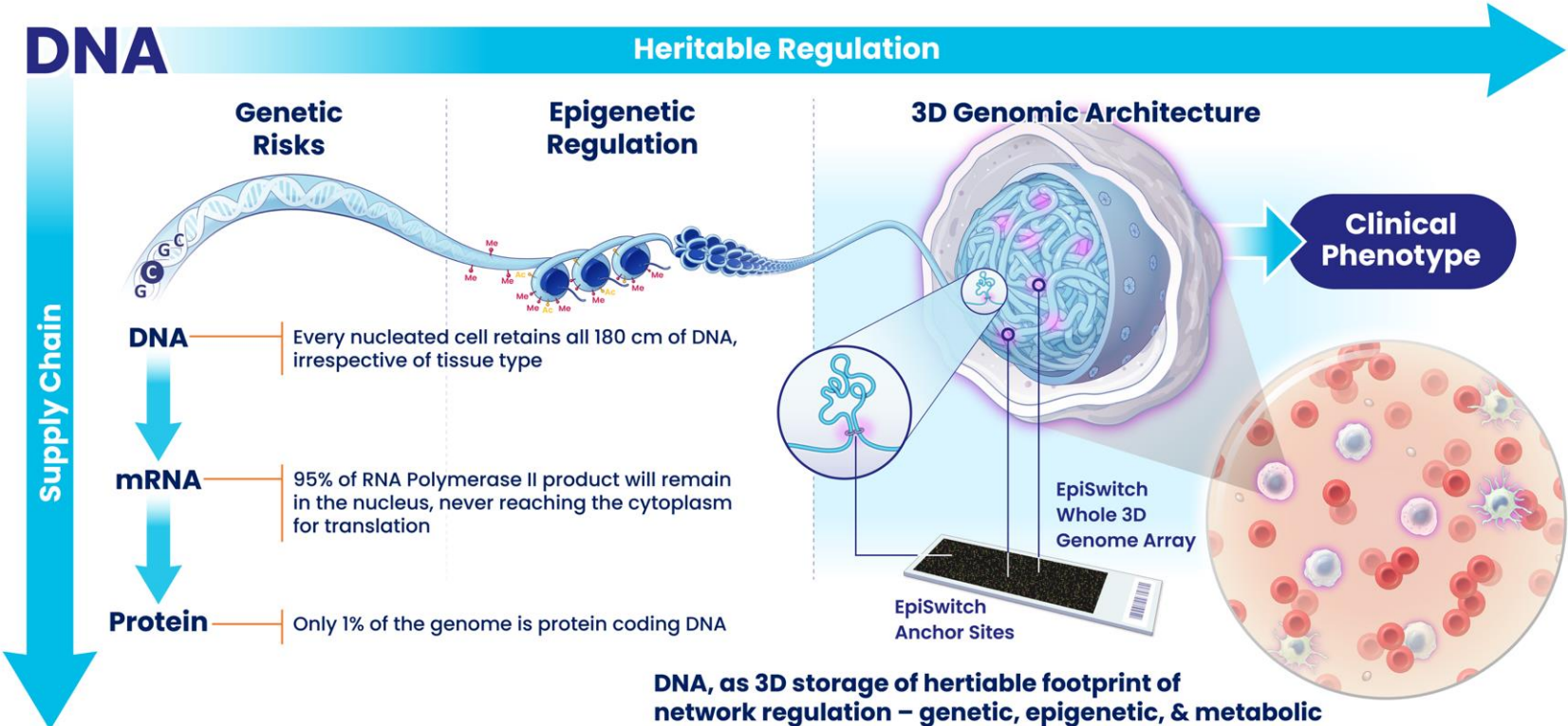
#

- ✓ Prostate Screening EpiSwitch (PSE test) launch in Sept 23
- ✓ Unique CPT/PLA code received in record time, coded by Jan 1 2024



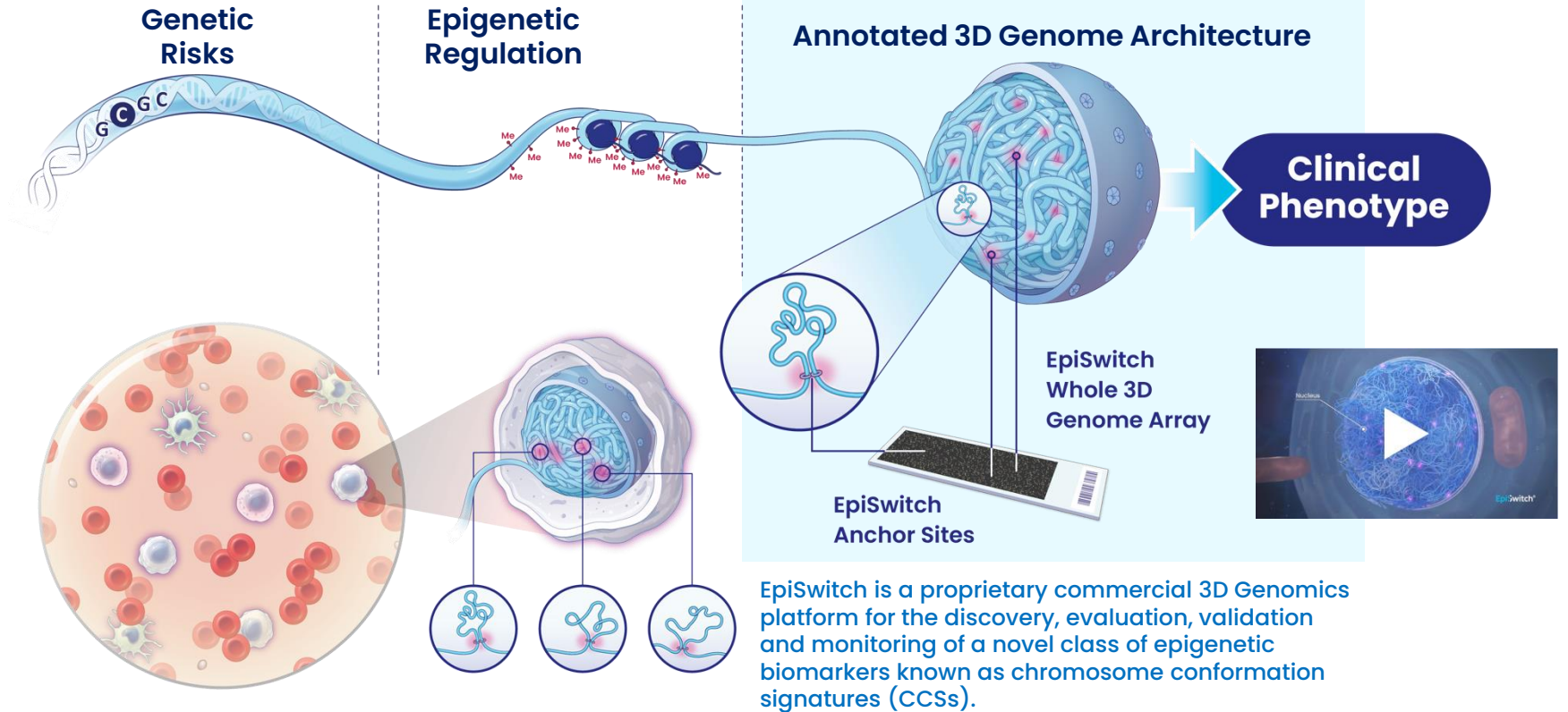
# Why 3D Genomics?

# 3D Genome as a Clinical Biomarker Modality



3D genome as the molecular regulatory network underlying cellular phenotypes

# EpiSwitch® As A Tool for Clinical Biomarker Development



3D genome is the molecular regulatory network underlying cellular phenotypes

