



# Capstone & The Marketplace from a Distributor's Point of View

---



**E-Finity Distributed Generation**

an authorized Capstone distributor

*Power to be Independent*

# Safe Harbor



This presentation contains “forward-looking statements” regarding future events or financial performance of Capstone Turbine Corporation (Capstone), within the meaning of the Safe Harbor provisions of the Private Securities Litigation Reform Act of 1995.

Forward-looking statements may be identified by words such as “believe,” “expect,” “objective,” “intend,” “targeted,” “plan” and similar phrases.

These forward-looking statements are subject to numerous assumptions, risks and uncertainties described in Capstone's Annual Report on Form 10-K, Quarterly Reports on Form 10-Q and other periodic filings with the Securities and Exchange Commission that may cause Capstone's actual results to be materially different from any future results expressed or implied in such statements. Because of the risks and uncertainties, Capstone cautions you not to place undue reliance on these statements, which speak only as of the date of this presentation. We undertake no obligation, and specifically disclaim any obligation, to release any revision to any forward-looking statements to reflect events or circumstances after the date of this presentation or to reflect the occurrence of unanticipated events.

# Who is E-Finity?



- Exclusive Mid-Atlantic and Southeastern distributor
- Microturbine and CHP education
- System sizing / Energy analysis and economics
- Application engineering support services
- Project consultation services
- Complete preventive (FPP) services
- Fleet exceeds 600+ Microturbines

**E-Finity Distributed Generation**  
Power to be Independent  
610.688.6212

**Capstone Turbine Corporation**  
TURBINE CORPORATION  
CAPSTONE TURBINE CORPORATION

Site Survey Form - CHP & CCHP Nat Gas

**Note:** This document is used to aid E-Finity with preliminary design of potential projects. It will help E-Finity to better understand the intended application of the equipment, as well as how the MicroTurbine will be installed.

**Note:** The information contained in this document is intended only for informational and advisory purposes. This document, and any other information contained in this document, is not intended to constitute an offer of any product or service. Capstone Turbine Corporation does not guarantee proper installation, performance or operation of any product or service without the proper application of the product. Capstone Turbine Corporation does not guarantee the performance of any product or service without the proper application of the product. Capstone Turbine Corporation does not guarantee the performance of any product or service without the proper application of the product. Capstone Turbine Corporation does not guarantee the performance of any product or service without the proper application of the product.

**Note:** This information is provided to Capstone Turbine Corporation and E-Finity, LLC. Neither this document nor the information contained herein shall be copied, printed or otherwise used for any purpose other than the specific system for which this document was prepared. Capstone Turbine Corporation reserves the right to change or modify without notice the design, the product specifications, and the contents of this document without incurring any obligation other than to replace equipment previously sold or in the process of construction.

|                         |  |                          |  |
|-------------------------|--|--------------------------|--|
| <b>Project Name</b>     |  |                          |  |
| <b>Company Name</b>     |  | <b>Contact Name</b>      |  |
| <b>Primary Contact</b>  |  | <b>Technical Contact</b> |  |
| <b>Project Location</b> |  | <b>City</b>              |  |
| <b>State / Province</b> |  | <b>Country</b>           |  |

**General**

Project Timeline:  to

Building Use:

Is project New Construction or Retrofit?  New  Retrofit

Approximate Building(s) Size:  sqft

Motivation:

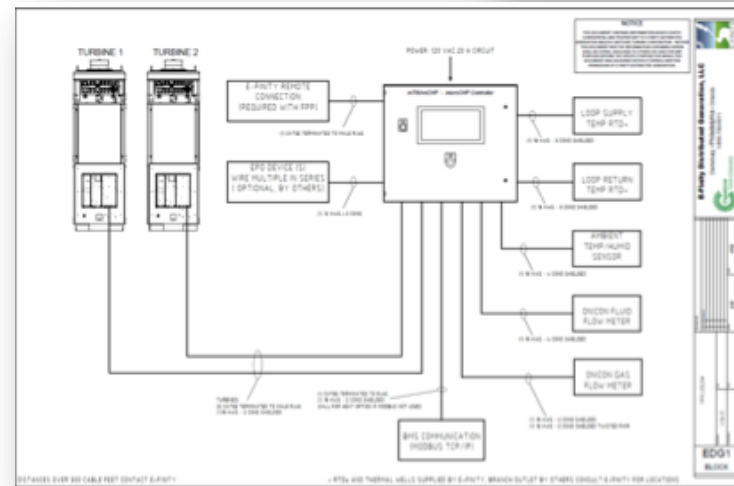
**Electrical**

Utility:  if other please specify

Est Average (kW)   
 Base Load (kW)   
 Peak Load (kW)   
 Avg Mo Usage (kWh)

Service Size (Amps)  A  
 Service Voltage  480V 3 Phase 4 Wire

Does Building Have Multiple Meters?  
 Yes  No



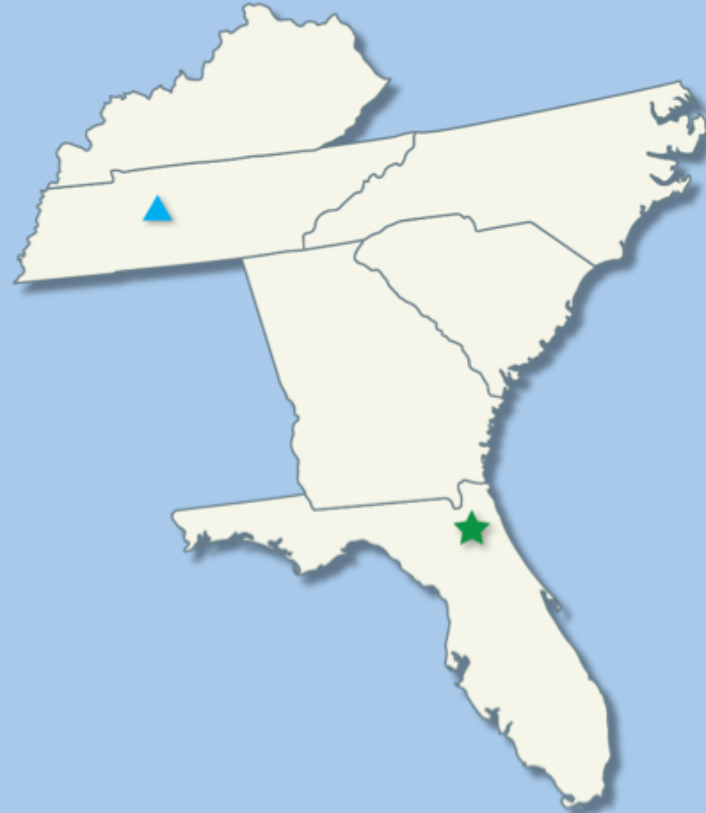
# E-Finity Office & Service Hubs



## MID-ATLANTIC REGION



## SOUTHEAST REGION

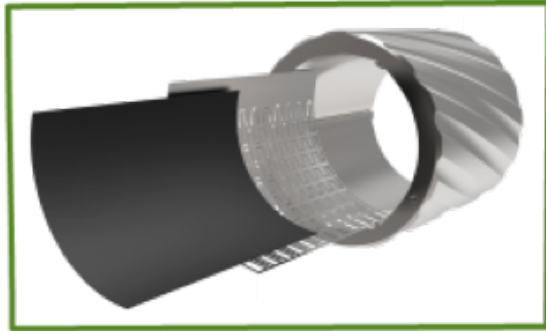


★ Sales / Service Office

● Service Hub

▲ Planned New Service Hub

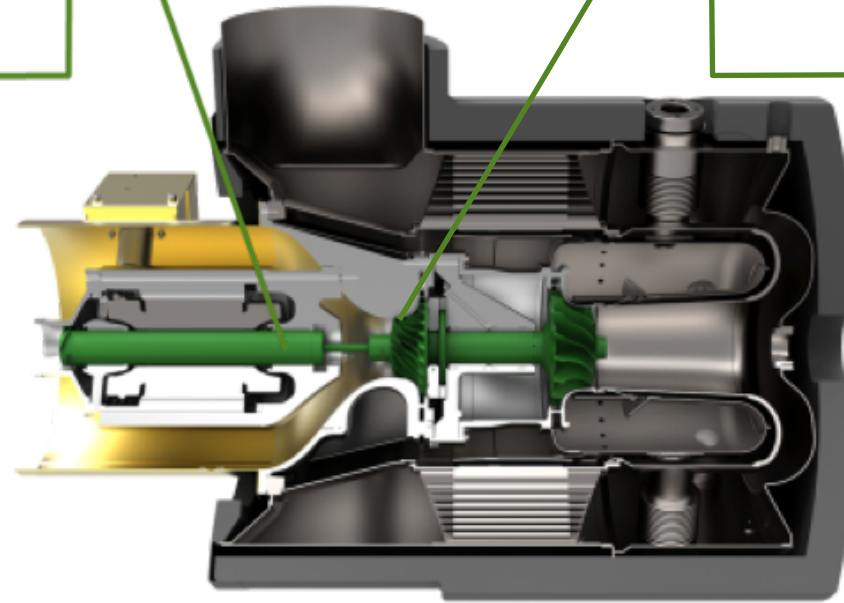
# Capstone Microturbine



Air Foil



Rotor Group



- Single stage design
- Recuperated
- Single moving part

- Air lubricated
- Air cooled
- Low emissions < 9 ppm NOx

# Single Stage Turbine



- Small footprint
- Easy to install
- Zero vibration
- Very quiet (65 dba @ 10 meters)
- On board gas compression
- Long life cycle (Masonic Village 17+)



# C65 & C200R



**C65 Microturbine**

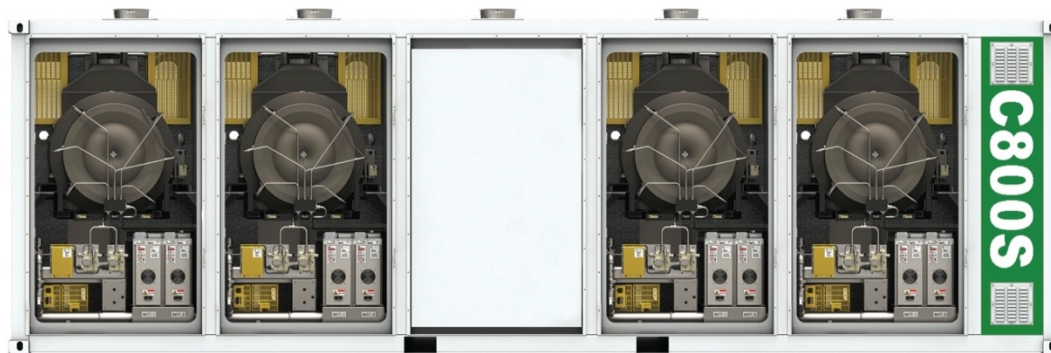


**C200R Microturbine**

# C600S Expandable to C800S & C1000S



C600S Power Package



C800S Power Package



C1000S Power Package





# Oil & Gas Capstone Applications

---



# Meeting Demand in the Industry



Capstone systems help ensure the flow of natural gas and provide a perfect fit for many different types of oil and gas sites

- Exploration
- Gathering (midstream)
- Transmission and storage
- Metering and regulation
- Water pumping
- Processing stations



# Midstream Sites



- Generate power from wellhead gas
- Low emissions
- Microturbines onsite in 4-8 weeks
- Aggressive construction schedules



# Water Pumping Sites



- Primary power for remote locations with water pumps and holding ponds
- Allows locations to be put into service quickly without waiting for an electric utility feed



# Interconnect & Metering Sites



- Primary power for remote pipeline interconnect locations with metering and gas analysis equipment
- Allows new pipeline taps to be placed into service quickly without waiting for an electric utility feed



# Gas Transmission & Gas Storage



- Primary power and heat for gas transmission and gas storage compression facilities with or without grid power available
- Allowing new stations to come online quickly and cleanly by replacing the local utility or diesel generation with natural gas powered generation
- Use of CHP increasing overall efficiency of the gas system



# Well Site Locations



- For well sites, Capstone turbines provide power to pump heavy liquids, heat trace lines, etc.
- Perfect for both manned and unmanned sites
- Capstone turbines can be fueled with wellhead gas



# Skid Mounted Systems



- Developed in response to customer request
- Customizable
- Pre-commissioned
- Arrives ready for fuel and electrical connections
- Multiple unit skids available







# CHP & CCHP Heat Recovery Products

---



# Hot Water



- Integrated hot water heat exchanger for all turbines
- Up to 212°F (100°C) hot water
- External heat recovery available for higher temperatures
- 400,000 to 5,000,000 million BTU's



**C65 ICHP**



**C200S ICHP**

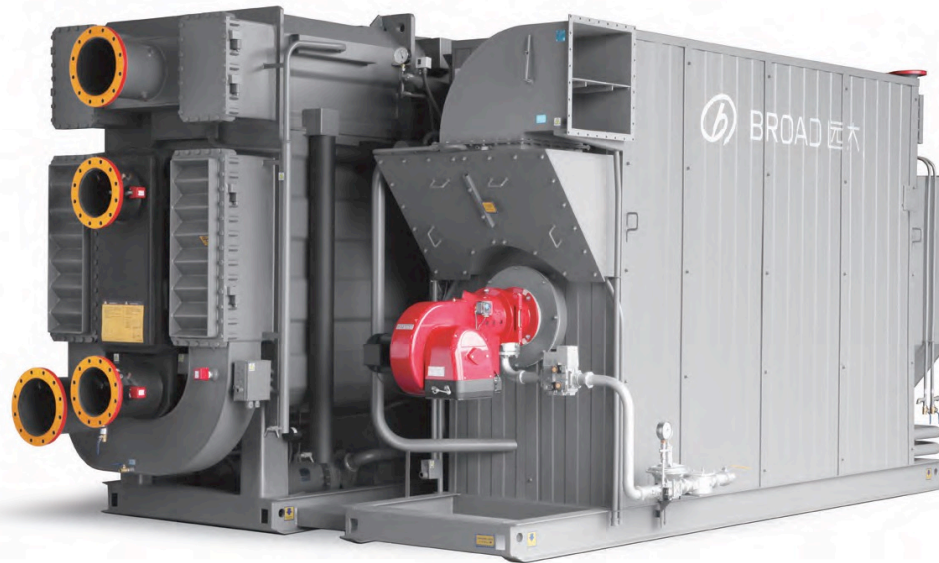


**C1000S ICHP**

# Chilled Water

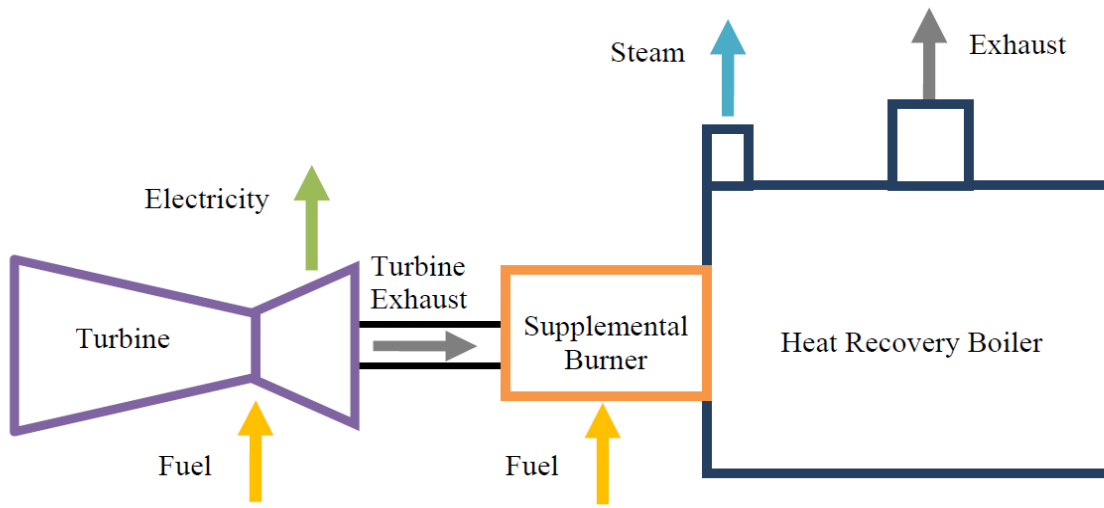


- 20 to 400+ tons
- Single to triple effect
- Hot water, steam, and exhaust driven
- COP 0.7 to 2.5
- Indoor and outdoor rated
- New “well established” products in the market



# Steam Production

- Heat recovery steam generators
- 3 to 500 psig
- Integrated duct burners
- Efficiencies of up to 90%
- Skid mounted





# Commercial & Industrial Capstone Applications

---





## The Logan, Curio Collection Hotel by Hilton – Philadelphia, PA

*(Formerly The Four Season's Hotel)*

- 365 Room 5-Star Hotel
- Three (3) C65 ICHP microturbines
- Turbines provide hot water for heating, pool, spa, cooking, and domestic hot water



## Results

- EPA Award Winner
- Customer left Philadelphia Steam Loop
- Under a three year payback



# Office Building



## FMC Tower – Philadelphia, PA

- Two (2) C65 ICHP Turbines
- 800 MBH of hot water for building
- Brandywine Realty Property

## Results

- Utilizes PGW “CHP” Gas Rate
- Microturbines were selected for LEED credits
- LEED Silver Building
- Started in February 2017





## Messiah College – Mechanicsburg, PA

- 1000 kW Power
- Trigeneration (CCHP) site
- Cain Heat Exchanger and Broad Absorption Chiller

## Results

- Provides building hot and chilled water to three buildings
- PP&L net metering site
- System provides backup power to Student Center





# Manufacturing



## Phoenix Contact – Harrisburg, PA

- 1000 kW power
- 5,000 MBH of hot water
- 300-ton exhaust fired absorption chiller

## Results

- Backup power to the entire facility
- 3,130 tons of carbon savings per year
- Won PA Governor's Award in 2015



# Data Center



## PSECU – Harrisburg, PA

- C800 Microturbine
- 800 kW of electricity
- Hot water and chilled water produced
- Backup power to data center in grid failure



## Results

- Payback is exceeding the original model
- System helped client achieve LEED Gold status
- Has provided backup power to site multiple times since installation



# Microgrid



## Military Installation – Virginia

- 1000 kW power
- 5000 MBH of hot water
- M-Tim PLC Controller
- ESPC contract

## Results

- Island capable
- Produces hot water and power to 20 buildings on base
- Reduces base carbon footprint



# Biogas Installation



## Sierra Nevada Brewery – North Carolina

- Two (2) CR200 Capstone Microturbines
- 250 scfm biogas and compression and removal system by Unison Solutions
- 60% methane biogas utilized from brewing process
- Low emissions
- Commissioned 2013
- Waste gas is used to generate power instead of flaring





## “Bumper to Bumper” Service Plans (FPP)

---



# Factory Protection Plan (FPP)



- All scheduled and unscheduled maintenance covered
- Work completed by Factory Certified Technicians
- Average of 6 hours of planned mtn/yr
- 5 / 9 / 15 / 20 year plans available

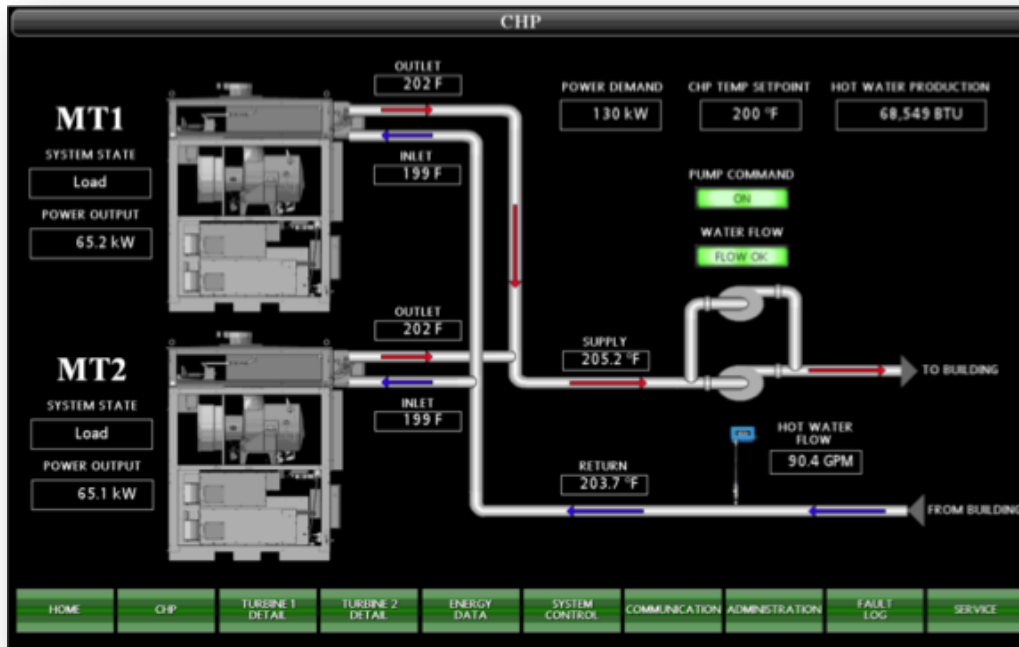
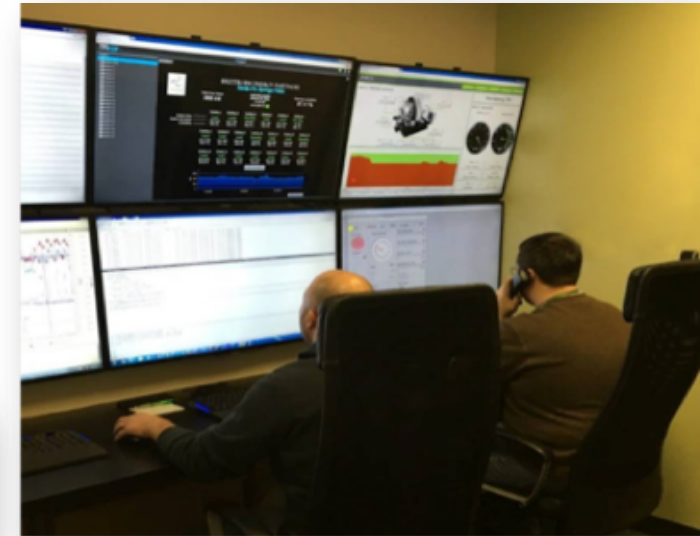


E-Finity Service Vehicle Fleet

# E-Finity Remote Monitoring



- Included in FPP
- 24/7 Remote monitoring
- 24/7 Remote troubleshooting
- Scheduled downtime only a few hours a year





**NASDAQ: CPST**

---

[www.capstoneturbine.com](http://www.capstoneturbine.com)

