



Coda Octopus:3D

Real-Time Sonar Solutions

NANO Gen Series 3D PSU



NANO Gen Series 3D PSU

Unify Power, Communication and Synchronization

The NANO Gen Series 3D PSU is the newest generation of power, control and data integration units designed specifically for the Echoscope PIPE NANO Gen Series®. The NANO Gen Series 3D PSU supports the use Echoscope PIPE NANO Gen Series® and our latest Integrated Pan and Tilt device, the NANO IPT.

Designed to effortlessly handle data and control both devices, the NANO Gen Series 3D PSU also allows both devices to be time synchronized to millisecond level accuracy for the duration of operations.

Easy-to-read LEDs on the power supply housing display the status of inputs, power usage, and synchronization status. Its web-based diagnostics and monitoring interface enable simple online control of all connected devices, including power usage. Moreover, it is fully supported in all Coda Octopus software, including 4G USE®, and Construction Monitoring Solution (CMS). With the flexibility to be mounted on walls for permanent setups or used on any available vessel, the NANO Gen Series 3D PSU offers both AC and DC power options, making it an ideal choice for deploying Echoscope PIPE NANO Gen Series® on any vessel or surface platform.



Quick and Easy

Setup with full support in all Coda Octopus Software



Web Based App

Built-in Diagnostics, Monitoring and Configuration



MOTION support

Support for both F280® and F180 Models



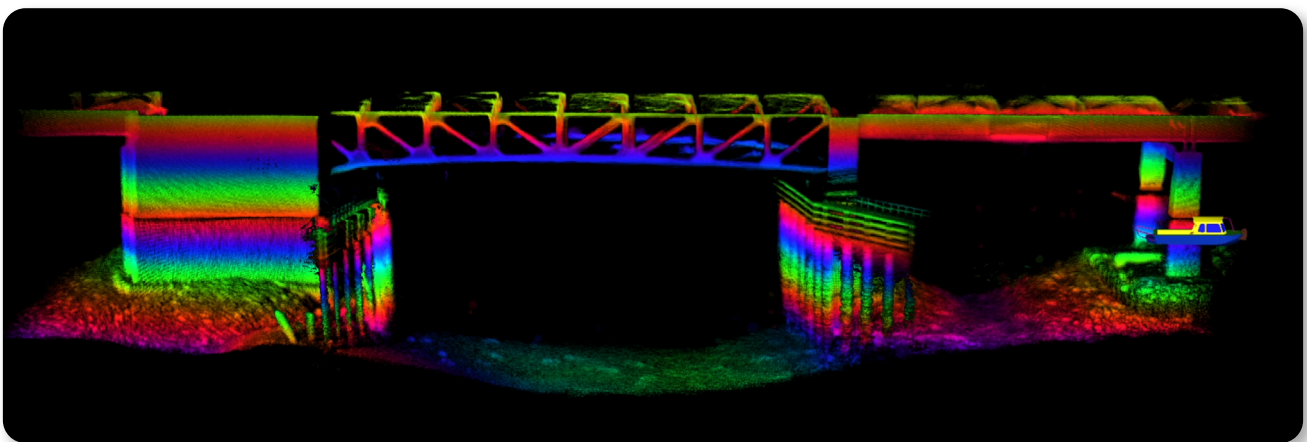
Synchronization

Synchronizes Echoscope PIPE® or Rotator to external time source with 1 ms accuracy



4G USE® Support

Full support for the 4G USE® software



Coda Octopus
Sound Underwater Intelligence

Sales Worldwide: +44 131 553 1380

Sales Americas: +1 407 735 2400

sales@codaoctopus.com

www.codaoctopus.com

NANO Gen Series 3D PSU Technical Specifications

Power

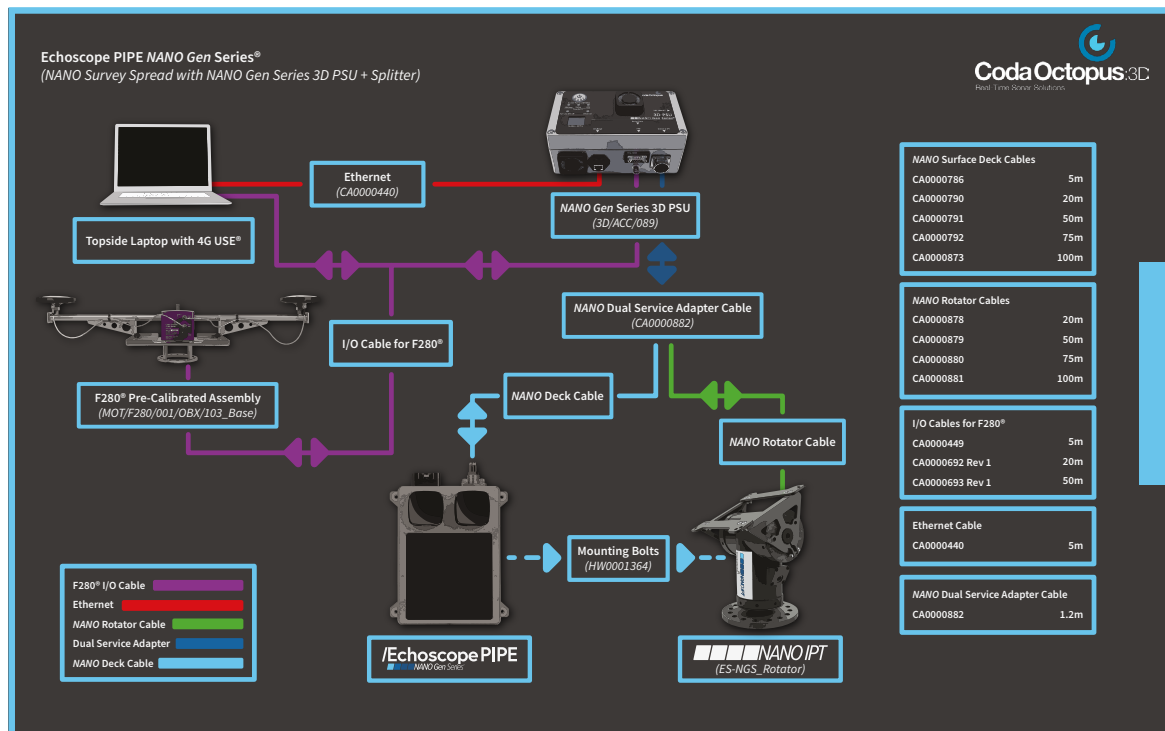
Power Input	100 - 200 VAC Input
Power Output	48 VDC

Data Input/Output

RJ45 Ethernet GB/s Ports for PC
48 VDC and Ethernet to Echoscope PIPE NANO Gen Series®
BNC PPS TTL Signal Input
RS232 DB9 Serial Time Input Connector (ZDA)
AC Power in (100 - 240 VAC)

Physical

Dimensions L x W x H	229mm x 133mm x 98mm (9.02" x 5.24" x 3.54" in.)
Weight in Air	2.2kg (4.85lbs)
Storage Temperature	-20° - 60°C (non-condensing)
Operating Temperature	0° - 40° C



Publication Date: 02.04

Version 1