

Features

- Compatible with Coda Octopus UIS (Underwater Inspection System)
- Direct interface for UIS Pole-D and Compact Pole systems
- Supplied with Clamp/Grip for easy attachment to Poles and Railings on vessel
- IP67 Weatherproof
- High Definition 4MP (2688 x 1520) Camera
- 1080p Video Image Storage
- Fully Time Synchronized with Echoscope and Navigation Data
- Fully Integrated in our top-end software 4G USE® & USE
- Simple and easy-to-use



Complementary Camera Data -Real-Time Day/Night Video Above Waterline used in conjunction with the Echoscope®

The latest UIS Camera Gen 2 provides complementary real time camera data to the sonar data and is fully integrated in Coda Octopus' software modules. The ability to add fully synchronized video imagery above the waterline to complement your Echoscope subsea inspection and mapping data. The addition of the UIS Camera in most applications (other than open water surveying) can be incredibly helpful for vessel piloting, target identification, situational awareness and assist greatly with client deliverables.

Fully compatible with Coda Octopus's powerful real-time postprocessing software applications—4G USE®, CodaOctopus® Underwater Survey Explorer (USE), and CodaOctopus® Construction Monitoring Solution (CMS)—it has been invaluable in the construction industry for well over a decade.

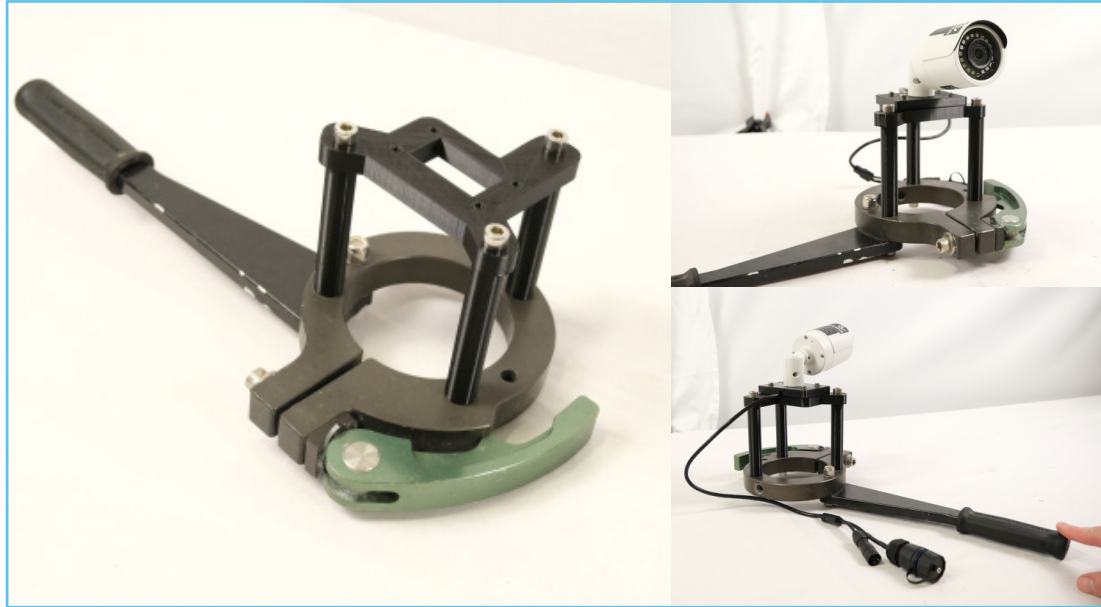
The ability to replay the project by time or look at a specific location and seeing the above and underwater data is in most inland applications extremely beneficial. For real-time placement applications such as construction, dredging and cable lay allow complete scene awareness above and through the waterline.

Benefits

- ⦿ Frame-by-Frame Access for above and below waterline feature comparison between video and Echoscope sonar data
- ⦿ Used to qualify or assist in the understanding of a subsea object when the same target is both above and below the waterline
- ⦿ Provides additional data for applications such as security sweeps where above waterline searches can be conducted at the same time as subsea.
- ⦿ Provides a complementary dataset for inspection applications such as Bridge Inspection data – these images and videos can identify objects of interest above the waterline with all data being georeferenced
- ⦿ Provides seamless above and below the waterline monitoring for tasks such as diver support, construction asset placement, breakwaters and cable lay
- ⦿ UIS Camera can be placed coaxially with the Echoscope or at an independent view angle per application
- ⦿ In multiple Echoscope applications a UIS Camera can be paired with each system
- ⦿ Used as a visual cue or reference point where an object/defect/point of interest may be found below the waterline. “Below Piling #24” etc.

Mobilizations Configurations

Setup Option 1: Coda Octopus Supplied Pole Assembly Configuration



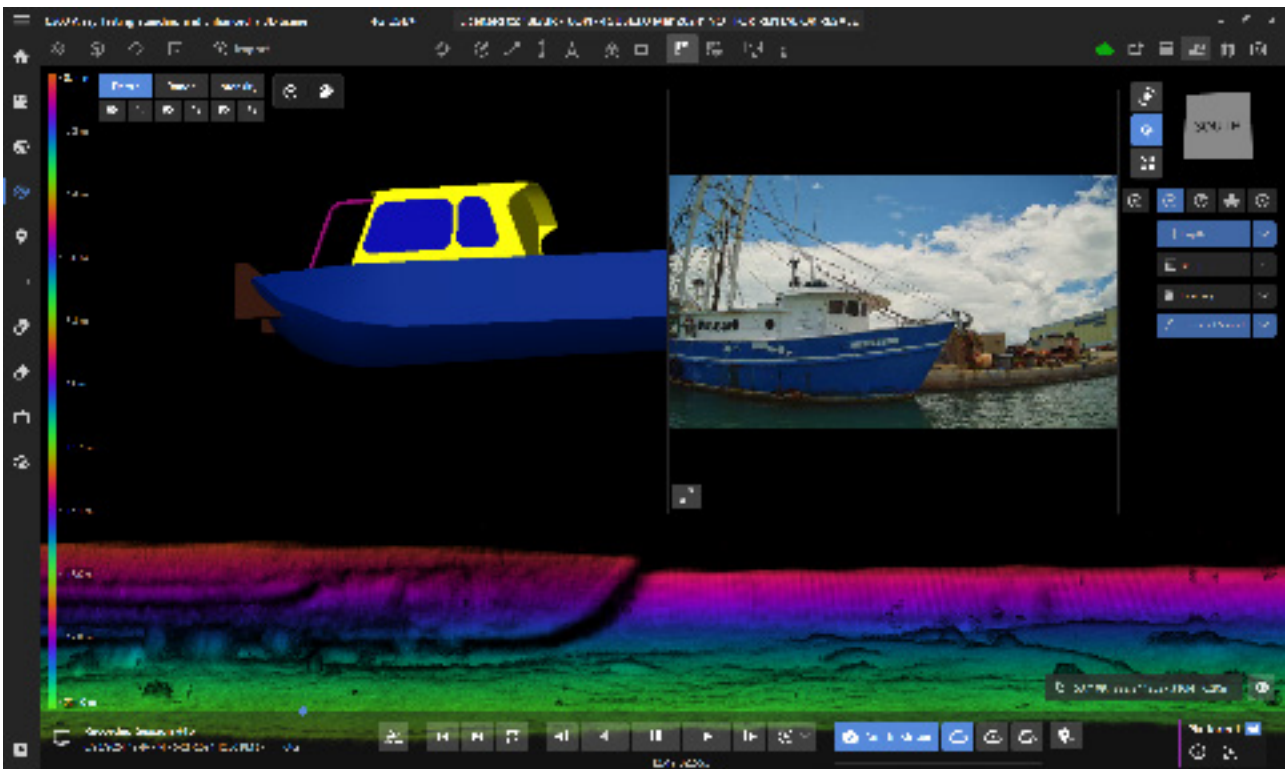
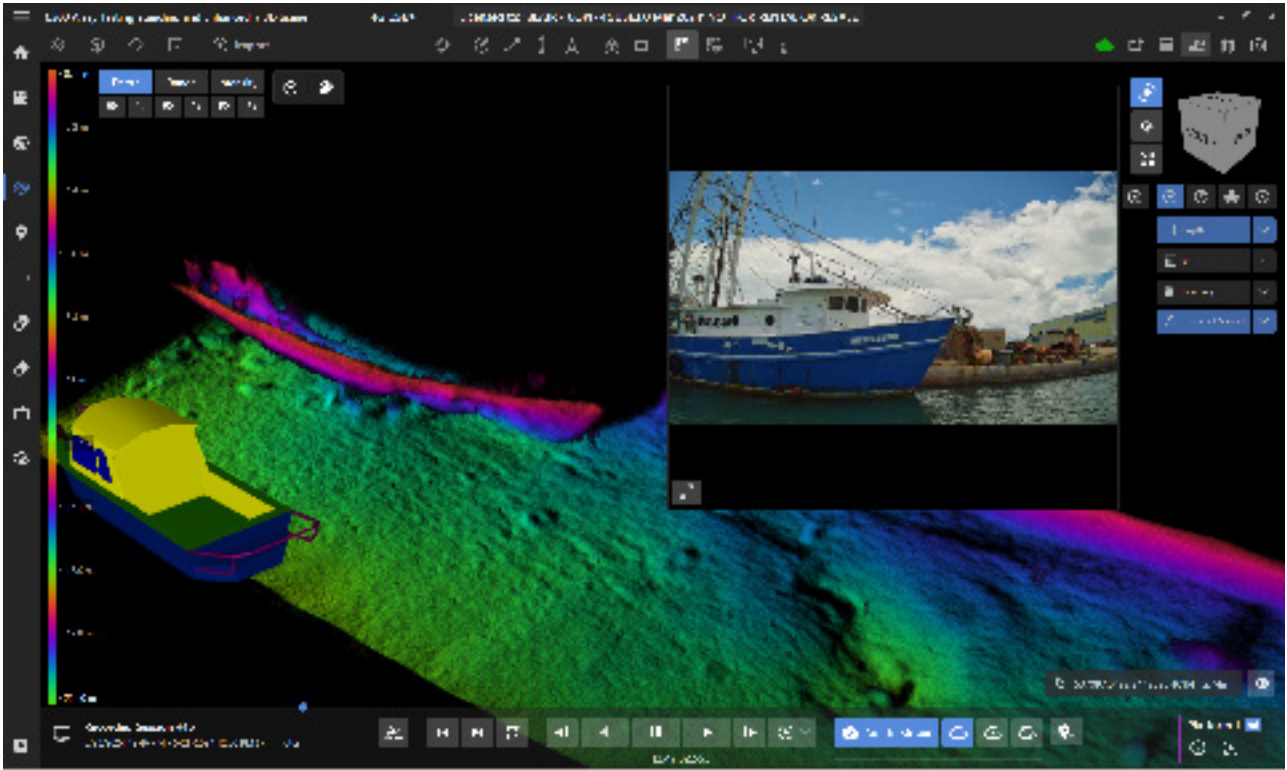
Setup Option 2: Coda Octopus Supplied Lightweight Pole Assembly Configuration



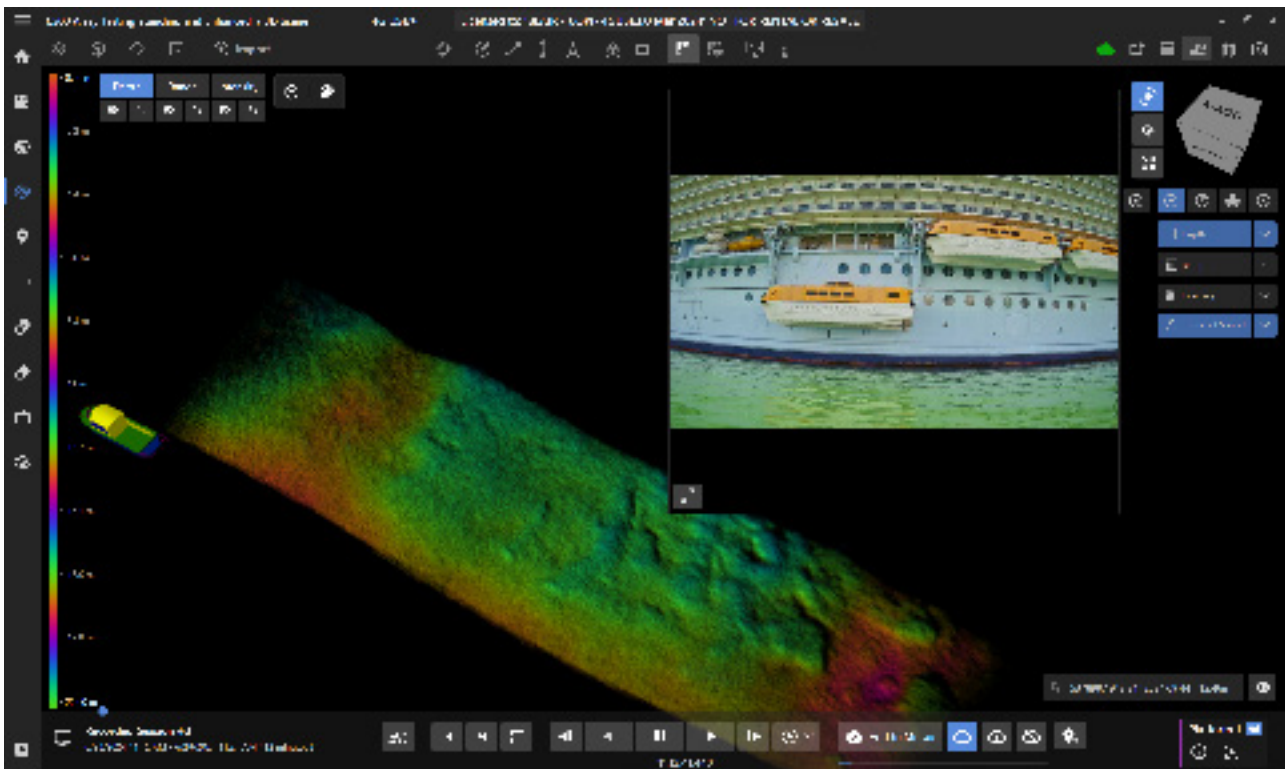
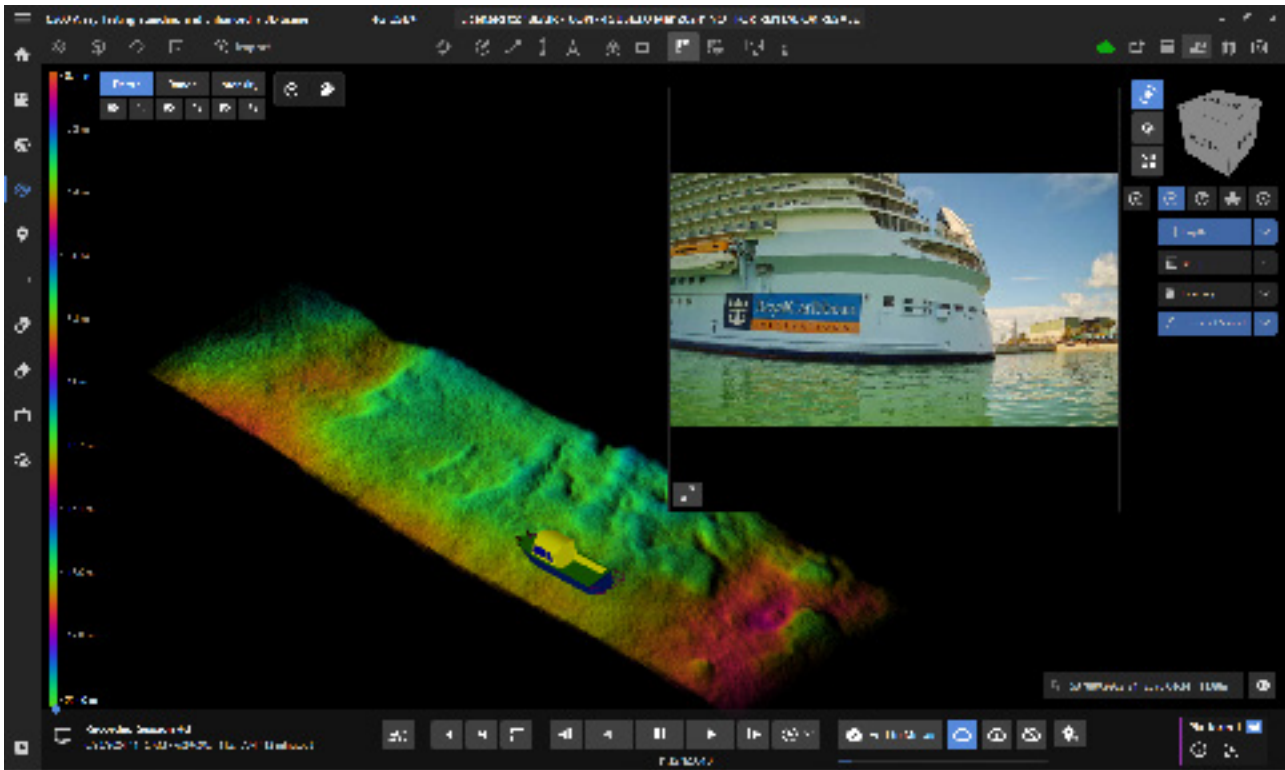
Setup Option 3: Universal 1/4 adapter Configuration



Camera Data Gallery



Camera Data Gallery (Continued)



Technical Specifications

| Network | | |
|-------------------------|---|------------------------------|
| Ethernet | RJ-45 (10/100Base-T) | |
| Protocol | HTTP;HTTPS;TCP;ARP;RTSP;RTP;UDP;SMTP;FTP;DHCP;DNS;DDNS;PPPOE;IPv4/v6;QoS;UPnP;NTP;Bonjour;802.1x;Multicast;ICMP;IGMP; | |
| Electrical | | |
| Power Supply | DC12V | |
| Power Consumption | <4.3W | |
| Environmental | | |
| Operating Conditions | -30° C ~ +60° C (-22° F ~ +140° F) / Less than 95% RH | |
| Storage Conditions | -30° C ~ +60° C (-22° F ~ +140° F) / Less than 95% RH | |
| Ingress Protection | IP67 | |
| Physical | | |
| Camera Construction | Casing | Metal+Plastic |
| | Dimensions | Φ70mm×164.7mm(2.76''x6.49'') |
| | Net Weight | 0.38Kg(0.84lb) |
| | Gross Weight | 0.44Kg(0.97lb) |
| Base Plate Construction | Casing | Plastic |
| | Dimensions | Φ88mm×58mm x 22mm |

Certifications

- ⦿ CE (EN 60950:2000)
- ⦿ UL:UL60950-1
- ⦿ FCC: FCC Part 15 Subpart B

Publication Date: 07.24
Version: 1.0.07.24