



Benefits

- Improved situational awareness
- Real time decision making
- Increased productivity
- Maintain subsea operations in zero visibility
- Minimises non-productive time
- Enhanced safety
- Expert 24x7 Technical Support

Applications

- Port and Harbour security
- Infrastructure inspection
- Dredging and rock dumping
- Cable laying, burial and pull-in monitoring
- Scour inspection
- Marine salvage
- Diver monitoring
- Obstacle avoidance and ROV navigation
- Decommissioning
- Contraband detection
- Biological studies (fisheries, marine mammals)
- AUV and ROV 3D Volumetric Mapping

The Echoscope® C-Series. Compact real-time 3D sonar for performance and economy

The Echoscope® C500 forms part of the new Echoscope® Compact Series (C-Series). The C500 is based on our patented Echoscope® technology and delivers real-time 3D sonar capability in a smaller, lighter, ruggedised form factor with reduced power requirements.

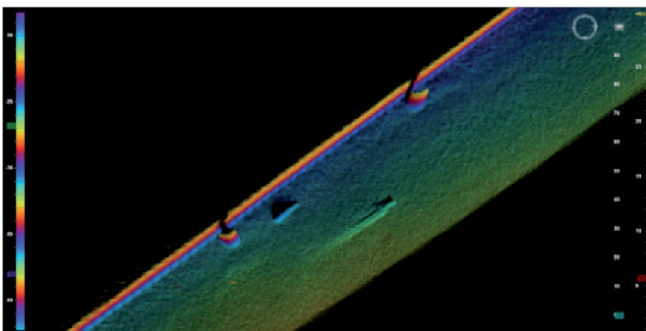
The Echoscope® C500 is suitable for ROV and AUV based applications as well as vessel deployments. The unit outputs real-time 3D data at beam widths of 1.1° x 2.1° (375 kHz) and 0.6° x 1.2° (610 kHz).

Fully integrated with our powerful CodaOctopus® Underwater Survey Explorer (USE) software, the C500 can be used with the full range of functionality available including the latest Models+ module allowing dynamic control of sonar augmented 3D models in the 3D Workspace. The C500 allows the acquisition of full real-time 3D data in a time efficient manner.

Features

- 🌀 High definition 3D sonar image generated in real-time
- 🌀 Mosaicing capability
- 🌀 Displays complex moving structures accurately
- 🌀 Accurate even in turbid water
- 🌀 Suitable for installation on vessels, ROV, barge or crane
- 🌀 Accurate geo-referenced data
- 🌀 Versatile DTM output options
- 🌀 Very easy to use even by non-sonar experts such as crane operators and law enforcement officers

Technical Specifications	
Performance (by Model)	Echoscope® C500
Frequency	375 and 610kHz
Number of beams	128 x 64 (8,192 total)
Maximum range*	80m (262 ft)
Minimum range*	1m (3.3ft)
Range resolution	2cm (0.79")
Update rate (ping rate)	Up to 20 Hz software selectable
Angular coverage	50°x50°, 50° x 25°, 25° x 50°, 25° x 25° software switchable
Beam spacing	0.39° (Hor.) or 0.78° (Vert.) at 375 kHz or 0.19° (Hor.) x 0.39° (Vert.) at 610 kHz dependent on angular coverage
*Software selectable	
**The actual working range will depend on the target's size, reflectivity, and the level of detail required for the application	
Physical	
Dimensions (h x w x d) (excluding connectors)	292 x 300 x 171.5mm (11.5" x 11.8" x 6.75")
Weight in Air	17.6 kg (38 lbs)
Weight in Water	7.5 kg (16.5 lb)
Power Consumption	2.05A at 24Vdc
Depth Rating	600 m (1,968ft) with 3,000m (9,840ft) option
Interfaces	
Sonar head to control unit	Single cable for power, data and control
Control unit to top-end PC	100Mb Industry Standard Ethernet and RS232
Applications	
Port and harbor security, Infrastructure Inspection, Underwater construction, Dredging and rock dumping, Mattress laying, Cable laying, burial and pull-in monitoring, Scour inspection, Marine salvage, Diver monitoring and identification, Obstacle avoidance and ROV navigation, Decommissioning, Contraband detection, Biological study (fisheries, marine mammals)	



Echoscope® C500 data. St. Petersburg, Florida

Echoscope® (Reg, Us Pat & TM off), CodaOctopus® are trademarks of Coda Octopus. CodaOctopus®, Echoscope®, Echoscope4G®, Echoscope® PIPE, Echoscope4G® PIPE, Echoscope® 6D, Echoscope® 5D, 5D Echoscope® 4G USE® Ping-Pong Echoscope® Sonar, Ping-Pong® Sonar, Ping-Pong Echoscope® are trademarks of Coda Octopus. This list is not exhaustive of all our trademarks used with our products and/or services.

The information in this publication was correct when it was published but specifications may change without notice. Photos are included for illustrative purposes only and actual items may differ in appearance. Coda Octopus does not assume responsibility for typographical or photographic errors. Issue 1 (03.15)

Sales Worldwide: +44 131 553 1380 Sales Americas: +1 863 937 8985 Sales Australasia: +61 894 308 045
 More Information: sales@codaoctopus.com salesamericas@codaoctopus.com www.codaoctopus.com
 Technical Support Worldwide: +44 131 553 7003 Technical Support Americas: +1 888 340 2632

