

# Deep Fission Style Sheet

## Mission

Powering humanity from a mile underground.

## Vision

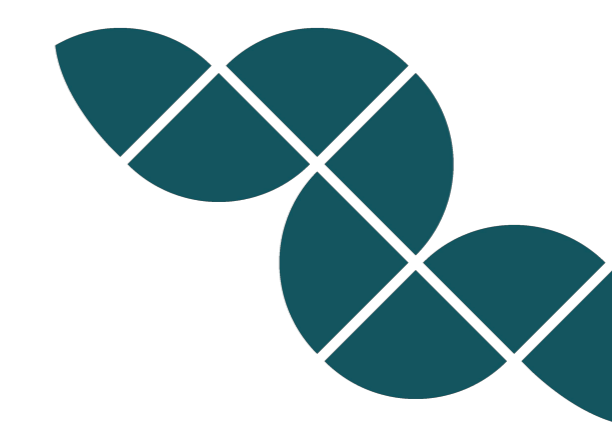
Clean energy for the AI era.

## Position

Deep Fission leverages the Earth's own physics to redefine the speed, cost and commercialization of nuclear power.

## Logo

The logo is set in the Guton typeface, selected for its clean lines, balanced proportions, and adaptable weight range. It is paired with the distinctive worm-shaped brand mark, a symbol of the depth and innovation at the core of Deep Fission's technology.



## Typeface & Typography

**Aa**  
HEADING

### Manrope

abcdefghijklmnopqrstuvwxy  
ABCDEFGHIJKLMNPNOPQRSTUVWXYZ  
0123456789!@£\$%^&\*?(?)

**Aa**  
BODY

### Albert Sans

abcdefghijklmnopqrstuvwxy  
ABCDEFGHIJKLMNPNOPQRSTUVWXYZ  
0123456789!@£\$%^&\*?(?)

### Heading 1 (H1)

28–36 pt / px

Manrope

### Heading 2 (H2)

22–28 pt / px

Manrope

### Heading 3 (H3)

18–22 pt / px

Manrope

### Body (P)

14–18 pt / px

Albert Sans

### Accent / Small Text

12–14 pt / px

Albert Sans  
or Manrope

## Color Palette

### Primary



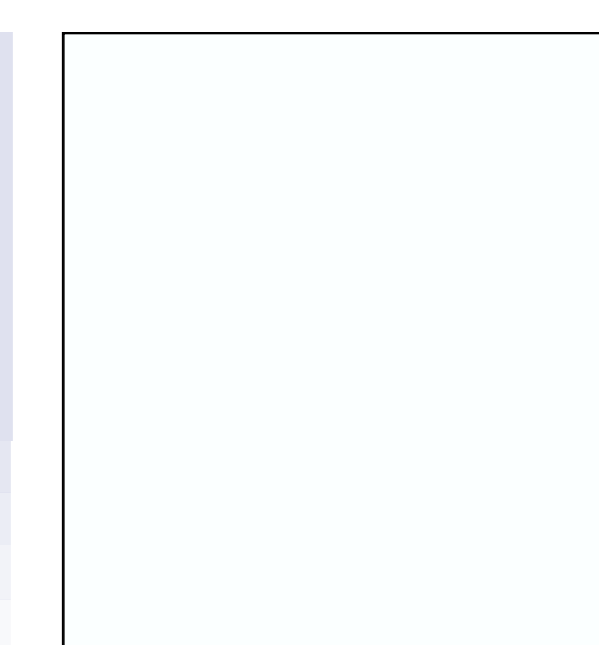
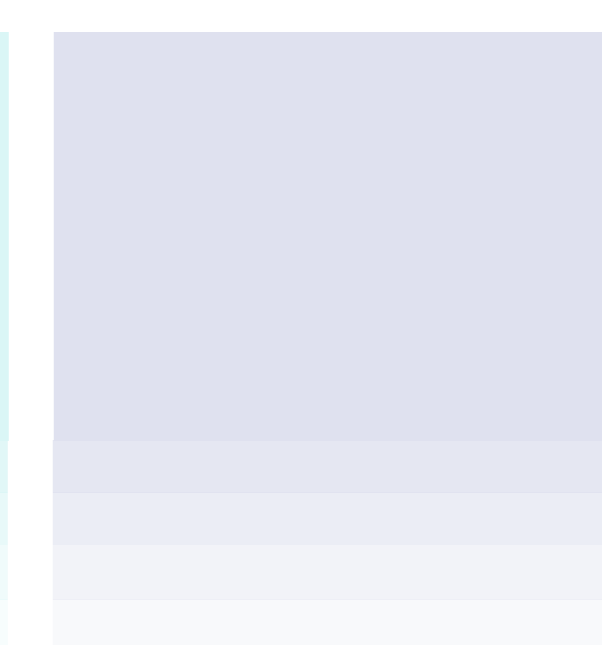
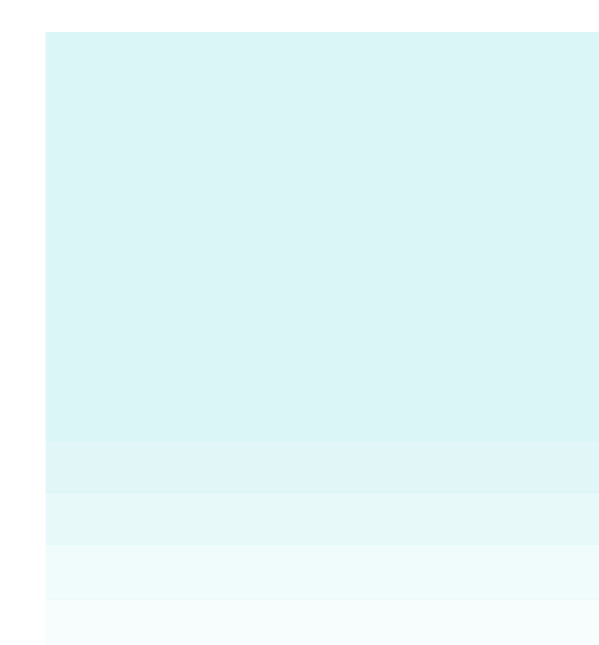
### Deep Teal

#145864  
RGB: 20,88,100  
CMYK: 90,52,48,25

### Fission Teal

#019C9A  
RGB: 1,156,154  
CMYK: 80,18,43,0

### Secondary



### Uranium Blue

#0A1980  
RGB: 10,25,128  
CMYK: 90,82,0,35

### Glow Blue

#DAF7F7  
RGB: 218,247,247  
CMYK: 12,0,0,3

### Steam Gray

#DFE1F0  
RGB: 223,225,240  
CMYK: 7,6,0,6

### Core White

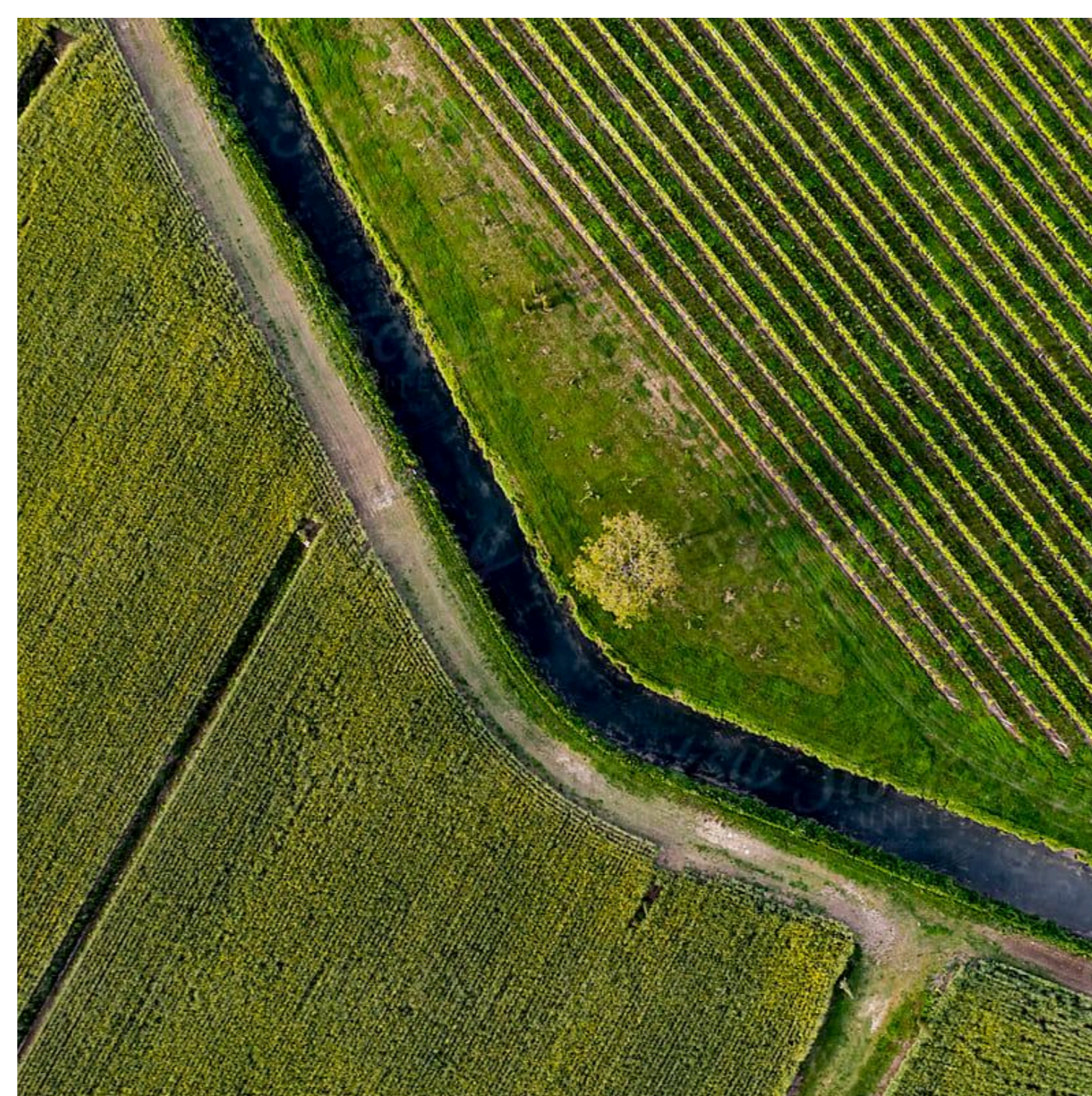
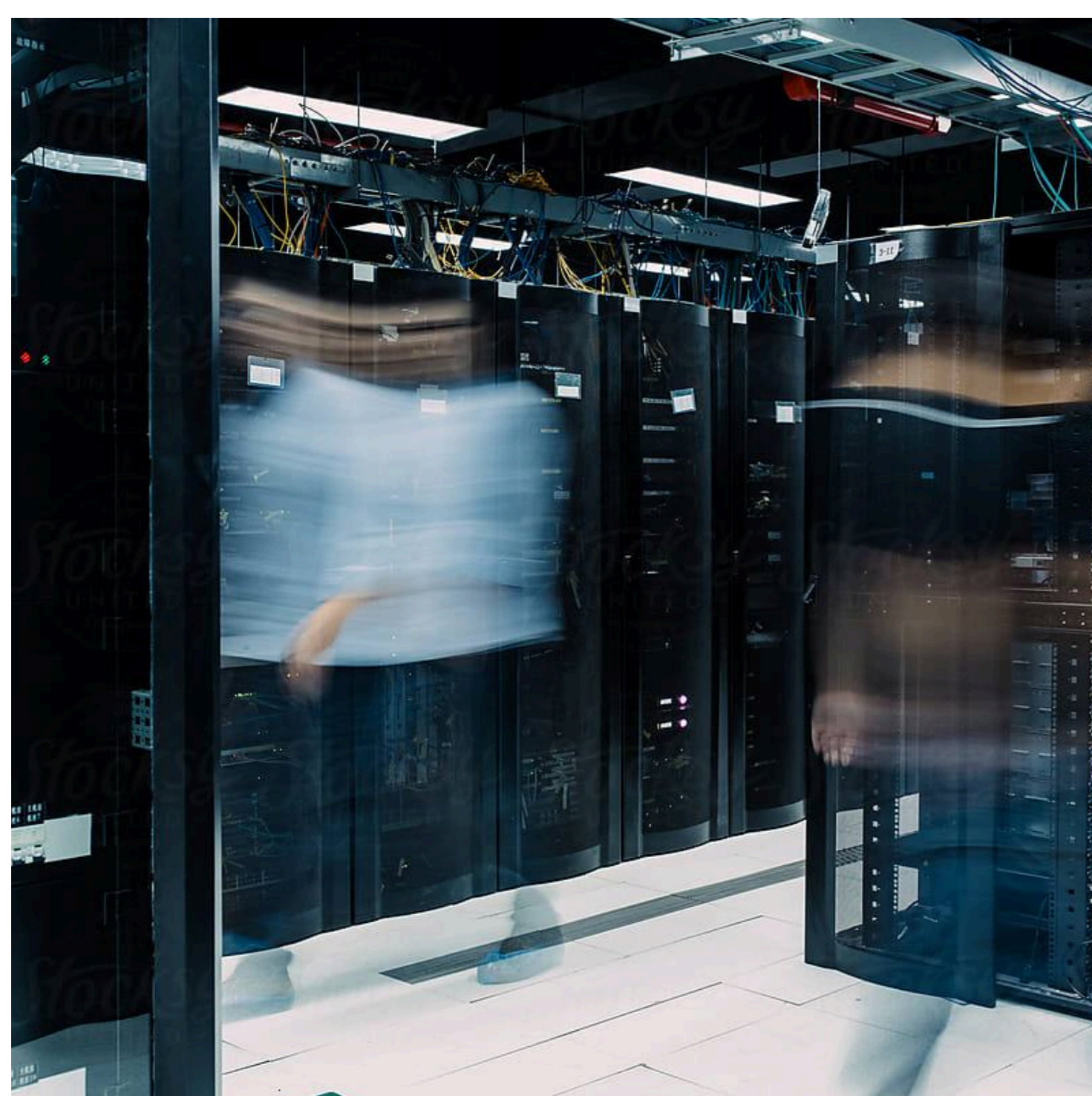
#FCFFFF  
RGB: 252,255,255  
CMYK: 1,0,0,0

### Gradients



## Image Style

Our photography emphasizes connection and lived experience, avoiding stock aesthetics in favor of storytelling that conveys dedication, impact, and progress.



## Patterns

Our patterns extend the brand by using the brandmark, and simple geometric forms to convey larger concepts with clarity and cohesion.

