

# Intraspinal Stem Cell Transplantation for Amyotrophic Lateral Sclerosis

Kevin S. Chen, MD,<sup>1</sup> Stacey A. Sakowski, PhD,<sup>2</sup> and Eva L. Feldman, MD, PhD<sup>3</sup>

Amyotrophic lateral sclerosis (ALS) is a devastating neurodegenerative disorder in which the loss of upper and lower motor neurons produces progressive weakness and eventually death. In the decades since the approval of riluzole, the only US Food and Drug Administration-approved medication to moderately slow progression of ALS, no new therapeutics have arisen to alter the course of the disease. This is partly due to our incomplete understanding of the complex pathogenesis of motor neuron degeneration. Stem cells have emerged as an attractive option in treating ALS, because they come armed with equally complex cellular machinery and may modulate the local microenvironment in many ways to rescue diseased motor neurons. Various stem cell types are being evaluated in preclinical and early clinical applications; here, we review the preclinical strategies and advances supporting the recent clinical translation of neural progenitor cell therapy for ALS. Specifically, we focus on the use of spinal cord neural progenitor cells and the pipeline starting from preclinical studies to the designs of phase I and IIa clinical trials involving direct intraspinal transplantation in humans.

ANN NEUROL 2016;00:000–000

Amyotrophic lateral sclerosis (ALS) is a neurodegenerative disease characterized by the selective and progressive degeneration of upper and lower motor neurons, with an estimated cost to society ranging from \$256 million to \$433 million in the United States alone.<sup>1</sup> ALS manifests as an insidious, inexorable decline in motor function, with progressively compromised strength, coordination, gait, and respiratory function, leading to death within an average of 3 to 5 years from diagnosis.<sup>2</sup> Approximately 15% of cases are associated with germline mutations in a number of genes, including *SOD1* ( $\text{Cu}^{2+}/\text{Zn}^{2+}$  superoxide dismutase), *TDP43* (transactive response DNA-binding protein 43), *FUS* (fused in sarcoma), and the more recently described *C9orf72* (hexanucleotide repeat expansions in the chromosome 9 open reading frame 72).<sup>3</sup> The vast majority of ALS cases, however, are sporadic, and the underlying pathophysiology remains unclear.

Many hypotheses exist to explain motor neuron death in ALS, including excitotoxicity,<sup>4–8</sup> loss of neurotrophic factors,<sup>9–11</sup> inflammatory signaling,<sup>12</sup> mitochondrial pathology,<sup>13,14</sup> and endoplasmic reticulum dysfunction and protein misfolding,<sup>15</sup> among others.<sup>16</sup> This complexity has stood in the way of successful development of mechanism-

based pharmaceutical treatments, and riluzole, a drug that extends survival by mere months, remains the only US Food and Drug Administration (FDA)-approved therapy for ALS.<sup>17</sup> Disappointingly, a number of trials targeting some of the abovementioned pathways have failed in large-scale clinical trials.<sup>18–36</sup>

Given the multifaceted nature of ALS, stem cell-based therapy has recently become an attractive option. Initially proposed as a means for motor neuron replacement, stem cells may actually provide a number of benefits by modulating the local microenvironment to facilitate native motor neuron survival. Stem cells elaborate neurotrophic factors such as glial-derived neurotrophic factor, brain-derived neurotrophic factor, vascular endothelial growth factor, and insulin-like growth factor-I.<sup>37,38</sup> Certain stem cells can also differentiate into astrocytes and increase efficiency of glutamate reuptake, a process that is disrupted in ALS.<sup>39</sup> Furthermore, stem cells that form neuronal cells may form synapses onto native motor neurons and provide trophic and/or contact-mediated support.<sup>40</sup>

In translating a stem cell-based approach from benchtop studies to clinical trials, a number of criteria must be achieved. First, the appropriate type of stem cell

View this article online at [wileyonlinelibrary.com](http://wileyonlinelibrary.com). DOI: 10.1002/ana.24584

Received Jun 18, 2015, and in revised form Dec 18, 2015. Accepted for publication Dec 18, 2015.

From the <sup>1</sup>Department of Neurosurgery, University of Michigan, Ann Arbor, MI; <sup>2</sup>A. Alfred Taubman Medical Research Institute, University of Michigan, Ann Arbor, MI; and <sup>3</sup>A. Alfred Taubman Medical Research Institute and Department of Neurology, University of Michigan, Ann Arbor, MI

must be identified and be obtainable in numbers that can be used therapeutically. Second, the means of cell delivery must be carefully considered, balancing the risks of invasive procedures with the need to deliver sufficient cells to specific areas within the nervous system. Here, we review the strategy of modulating the motor neuron microenvironment using cellular-based techniques and briefly introduce the current options being developed as cellular therapies. We then emphasize the preclinical data supporting our own journey toward a clinical trial using neural progenitor cells (NPCs) in ALS, and finally describe the results of our phase I trial, outline the phase IIa trial that has recently concluded, and offer perspective on the future of stem cell-based treatment for ALS.

### Stem Cells: Modulating the Local Microenvironment

The possibility of cellular replacement generated considerable enthusiasm for stem cell applications in neurodegenerative diseases, including ALS. Early data fueled this fervor, with studies in chicks showing the ability of stem cells to differentiate into motor neurons and reinnervate muscle.<sup>41</sup> This was then applied to rodent models of ALS bearing the first described familial ALS mutation (*SOD1*<sup>G93A</sup>) and exhibiting a phenotype of progressive motor neuron loss and weakness<sup>42,43</sup>; however, it quickly became apparent that hurdles for motor neuron replacement included not only introduction of stem cells into the spinal cord without damage to surrounding neural tissue, but also efficient differentiation into motor neurons, integration with local circuitry, growth of new axons in the mature central nervous system (CNS), proper axonal guidance to correct musculature, formation of mature neuromuscular junctions, and sufficient pruning for functional activity.<sup>44</sup> At this time, these hurdles cannot be overcome with our current technologies.

For true reconstruction of the motor system, biotechnology must advance to a point where implanted stem cells can receive new synaptic contacts as well as sprout new axons, typically impermissible in the CNS. These new axons must then be coaxed to enter ventral roots and follow a “bread crumb trail” of neurotrophic factors to create de novo neuromuscular junctions. Although early work to achieve this has been attempted,<sup>45,46</sup> the difficulties in translating these strategies to clinical practice have been prohibitive, especially considering the short survival window for ALS patients. Some strategies to address or bypass some of these barriers capitalize on intact transport functions of the nervous system; for example, targeting skeletal muscle allows neurotrophic factors, nucleic acids, or viral vectors to be brought to the appropriate motor neurons in the ventral

horn via retrograde transport.<sup>47–51</sup> Similarly, intracranial injections of stem cells have been used in attempts to widely affect the motor system in an anterograde fashion.<sup>52–54</sup> These multimodality and multisite strategies, combined with novel biomaterials that carry various biologics and new techniques for delivery (e.g., ever more miniaturized robotics or advanced image-guided intervention), could make motor neuron replacement a real strategy in the future.

For now, despite the selective vulnerability of alpha motor neurons in ALS, evidence has accumulated to suggest that ALS is not solely a disease of motor neurons, but rather one in which the local “neighborhood” contributes to motor neuron demise.<sup>55–57</sup> Elegant experiments performed in chimeric mutant *SOD1* mice showed that motor neuron death was linked to surrounding non-neuronal genotype rather than intrinsic properties of the neurons themselves; normal motor neurons surrounded by mutant *SOD1*-expressing non-neuronal cells displayed characteristics of degeneration akin to that seen in ALS, whereas mutant *SOD1*-expressing motor neurons surrounded by wild-type non-neuronal cells were protected from cell death.<sup>58</sup> Again, the exact mechanisms of this are unclear, but it is now fairly well established that motor neuron interaction with surrounding neurons, astrocytes, vasculature, skeletal muscle, microglia, and other immune cells contributes to motor neuron death.<sup>6,59–62</sup> Stem cells enter this scene armed with the full armamentarium of cellular processes (neurotransmitter uptake, synapse formation, inflammatory signaling, neurotrophic factor signaling, etc.) that can ameliorate toxic environments in a multifactorial fashion, a process difficult to achieve by small molecule therapy alone. As pharmacological agents advance, small molecule therapies may work synergistically with stem cells, and the combination could form the basis for future paradigms in clinical trial design.

There are many options to consider when developing a stem cell-based cellular therapy. This includes selection of the optimal stem cell type, and recent studies have focused on the potential utility of embryonic stem cells, olfactory ensheathing cells,<sup>63–66</sup> peripheral blood stem cells,<sup>53,67–73</sup> adipose stem cells,<sup>74</sup> bone marrow-derived mesenchymal stem cells,<sup>75–81</sup> and NPCs.<sup>82</sup> Determination of the optimal therapeutic delivery paradigm is also pertinent, and approaches range from systemic mobilization or intravenous delivery to precise localized delivery strategies within the CNS. Recent progress detailing the preclinical development and early clinical translation of these varying therapeutic strategies are reviewed elsewhere,<sup>83–86</sup> and these advances collectively provide important insights into the potential safety,

feasibility, and preliminary efficacy of the stem cell therapies currently being considered to treat ALS around the world; however, here we present our recent journey developing and translating a spinal cord NPC-based therapy for ALS.

## Spinal Cord NPCs

### **The Path toward Clinical Testing**

NPCs are pluripotent cells that have undergone the initial stages of differentiation, such that the cell types that arise are limited to neuronal and glial lineages. Over the past decade, our recent preclinical validation and clinical translation efforts have focused on the utilization of NSI-566RSC, an established NPC cell line generated from donated fetal spinal cord tissue.<sup>38,40,87</sup> Although mesenchymal stem cells obtained from bone marrow, peripheral blood, umbilical cord blood, and adipose tissue can be expanded and transplanted autologously with less risk of rejection, these cells cannot recapitulate neuronal synapses that might be crucial for rescuing motor neurons. Also, NPCs obtained from embryonic tissue have been spared the possible disease-related environmental exposure and epigenetic changes seen by the patient. However, on the other side of the spectrum, part of the risk of using more primitive embryonic stem cells or even olfactory ensheathing cells is ongoing proliferation and formation of teratomatous tumors.<sup>88,89</sup> Thus, whereas a disadvantage of using a NPC line is the immunosuppression required, the benefit comes from the ability of “fresh” NPCs to generate CNS-relevant cell types, form synapses, and still possess a decreased “tumorigenic” profile.

Initial preclinical studies assessing the therapeutic potential of the NSI-566RSC line in *SOD1*<sup>G93A</sup> rats showed that transplanted stem cells rescued motor neurons, improved motor function, and prolonged lifespan.<sup>38,40,90,91</sup> These studies further supported a mechanism whereby the transplanted cells modulated the local microenvironment by forming synapses with host motor neurons and eliciting neurotrophic signaling that rescued motor neurons only in the area of stem cell injection.<sup>38,40</sup> Notably, studies targeting both lumbar and cervical spinal cord segments in *SOD1*<sup>G93A</sup> mice demonstrated that dual targeting conferred greater therapeutic benefit.<sup>87</sup>

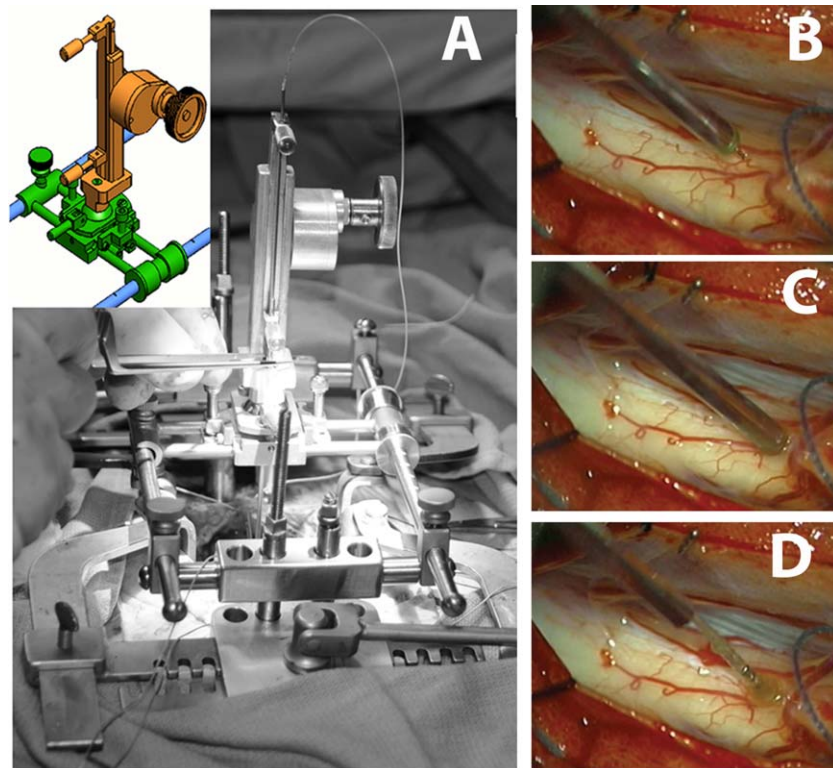
Further preclinical assessments along the pathway toward clinical translation included verification of the safety of intraspinal stem cell injection in a large animal. Intraspinal injection carries the greatest degree of risk for neurologic damage, thus limiting interventions to defined segments of the CNS. However, in contrast to intravascular or intrathecal administration, direct injection ensures localization of viable cells in the region of interest

(here, the ventral horn of spinal cord). Thus, the potential for local growth factor production and synapse formation can be maximized, while at the same time bypassing the blood–brain barrier. Studies performed by a team led by Dr Nicholas Boulis at Emory University proved critical in validating this approach, as delivery of a payload of cells by direct injection was a daunting task, considering that accurate needle placement must be made into the anterior horn without damaging the exquisitely sensitive surrounding structures of the spinal cord. Added to this is that this microscopic target moves and pulsates in response to the patient’s variable heart rate and respirations. Thus, a specialized spinal cord injection device was devised (Fig 1).<sup>84</sup> The device is anchored to the patient’s own bony anatomy and therefore grossly moves with the patient, enhancing safety if an adjustment of the operative table is needed or if the patient exhibits any intraoperative movement. A “gondola” affixed to this anchored frame carries a multi-axial “Z-drive,” allowing the surgeon to precisely angulate and space each injection. The injection needle design is based on preoperative imaging with a stop such that when the hub is at the dorsal spinal cord surface, the needle length (3–5mm, based on distance to anterior horn as measured on preoperative magnetic resonance imaging) places the injection tip in the anterior horn. This injection needle is connected to flexible tubing, allowing the needle to “float” and move with the pulsations of the spinal cord without causing unnecessary trauma.

Iterations of this device were designed for targeting the cervical or lumbar spinal cord segments and were then tested and optimized in the Gottingen minipig.<sup>92–94</sup> These experiments showed that minipigs tolerated 5 or 10 unilateral injections (6  $\mu$ l per injection) in cervical spinal cord. Most animals recovered motor and sensory function within 6 days of surgery, and all recovered to preoperative baselines by postoperative day 14. Initial immunosuppression protocols using tacrolimus and methylprednisolone were also optimized in these experiments to maximize xenogeneic cell survival. These studies not only demonstrated that injected cells were accurately placed within the anterior horn of the spinal cord using the spinal delivery frame (see Fig 1),<sup>84</sup> but most importantly, that the animals recovered with robust limb motor function after their surgical procedures, providing confidence that such an approach could be successful in man.

### **A Phase I Clinical Trial**

Preclinical evidence of NPC transplantation efficacy in the *SOD1*<sup>G93A</sup> rat along with demonstration of the feasibility and safety of spinal cord injection using the spinal injection



**FIGURE 1:** Spinal cord injection system for intraspinal stem cell transplantation. (A) Platform consists of 2 bridge rails (blue) and is anchored to the spine. Gondola (green) travels in a cranial-caudal dimension and compensates for slight movements in the platform application. Mechanical Z drive (orange) allows precise raising and lowering of a floating cannula. (B) Cannula tip is positioned 1mm medial to dorsal root entry zone. (C) Needle penetrates into spinal cord ~4mm from pial surface. (D) Once needle tip is at the target, metal outer sleeve is pulled up, allowing flexible tubing to accommodate cardiorespiratory pulsations of spinal cord. Reproduced with permission from Boulis et al.<sup>84</sup>

device in the minipig supported approval from the FDA for the trial “A Phase I, Open-label, First in Human, Feasibility and Safety Study of Human Spinal Cord Derived Neural Stem Cell Transplantation for the Treatment of Amyotrophic Lateral Sclerosis” (NCT01348451). Given the novelty of this intervention, the trial utilized a “risk escalation” design in terms of subject disease severity, intervention tar-

get, and injection number (Table 1). Dr Jonathan Glass at Emory University coordinated a team of Neurologists and Neurosurgeons to test this novel approach.<sup>82</sup> Group A included nonambulatory patients who received 5 unilateral (n = 3 subjects) or 10 bilateral (n = 3 subjects) injections in the lumbar spinal cord (L2–4), whereas Groups B (n = 3 subjects) and C (n = 3 subjects) included ambulatory

**TABLE 1. Risk Escalation Paradigm for Phase I Trial of Neural Progenitor Cells in Amyotrophic Lateral Sclerosis**

Group	Number Enrolled	Number of Injections	Target	Final Cell Dose
A1	3	5 total, 5 unilateral	Lumbar cord	$5 \times 10^5$
A2	3	10 total, 5 per side	Lumbar cord	$1 \times 10^6$
B	3	5 total, 5 unilateral	Lumbar cord	$5 \times 10^5$
D	3	5 total, 5 unilateral	Cervical cord	$5 \times 10^5$
C/E	3	15 total, 5 per side lumbar 5 unilateral cervical after observation period	Lumbar cord  Cervical cord after observation period	$1 \times 10^6$  $5 \times 10^5$ after observation period

subjects who received 5 unilateral or 10 bilateral injections into the lumbar spinal cord, respectively. Group D (n = 3 subjects) included ambulatory patients who received 5 unilateral cervical spinal cord injections (C3–5). Notably, these cervical injections target the motor neurons innervating the diaphragm, thus offering a means to offer protection against the most common cause of death in ALS—respiratory failure. The 3 patients in group C then received 5 unilateral cervical spinal cord injections in addition to their lumbar injections and formed Group E. To ensure survival of the transplanted stem cells, patients received methylprednisolone and basiliximab at the time of surgery, and were maintained postoperatively using another dose of basiliximab, a prednisone taper, and maintenance tacrolimus and mycophenolate mofetil. Further details of the clinical trial as well as the surgical implantation technique have been described elsewhere.<sup>84,95–98</sup>

To date, 7 deaths have been recorded among the patients enrolled in the phase I trial; 6 due to progression of the disease and 1 due to a previously undiagnosed congenital cardiac defect. Autopsy studies on postmortem spinal cord tissue from these subjects have provided exciting data to support the feasibility of surgical implantation of NPCs in ALS. First, in terms of safety, no tumor formation was evident in any subject. Second, histological assessments revealed nests of live cells representative of the transplanted NPCs in the regions targeted by the transplants, and male donor cells were evident in the female transplant recipients (Fig 2).<sup>99</sup> Moreover, every patient at autopsy demonstrated the persistence of donor-specific DNA in injected spinal cord when assayed for donor human leukocyte antigen genotype by quantitative polymerase chain reaction (Fig 3).<sup>99</sup>

In the phase I trial, although a number of adverse events (AEs) were observed, most were related to the immunosuppression regimen initiated to ensure engraftment of implanted stem cells<sup>82</sup> and no AEs were related to the surgical procedure,<sup>97,98</sup> emphasizing the safety and tolerability of this cellular therapy and transplantation technique. Furthermore, clinical assessments including ALS Functional Rating Scale-Revised (ALSFRS-R), ALS Quality of Life, forced vital capacity, hand-held dynamometry (HHD), and grip strength testing (GST) showed no acceleration of disease course. Although the phase I study was not designed to establish efficacy, the slope of disease progression appeared to improve after surgical implantation when compared to progression rate prior to surgery, particularly in Group C/E patients (Fig 4).<sup>83</sup> Furthermore, in the majority of patients, GST, HHD, and electrical impedance myography outcomes at 9, 12, and 15 months were improved when compared to presurgical baselines.<sup>83</sup> These results generated a great

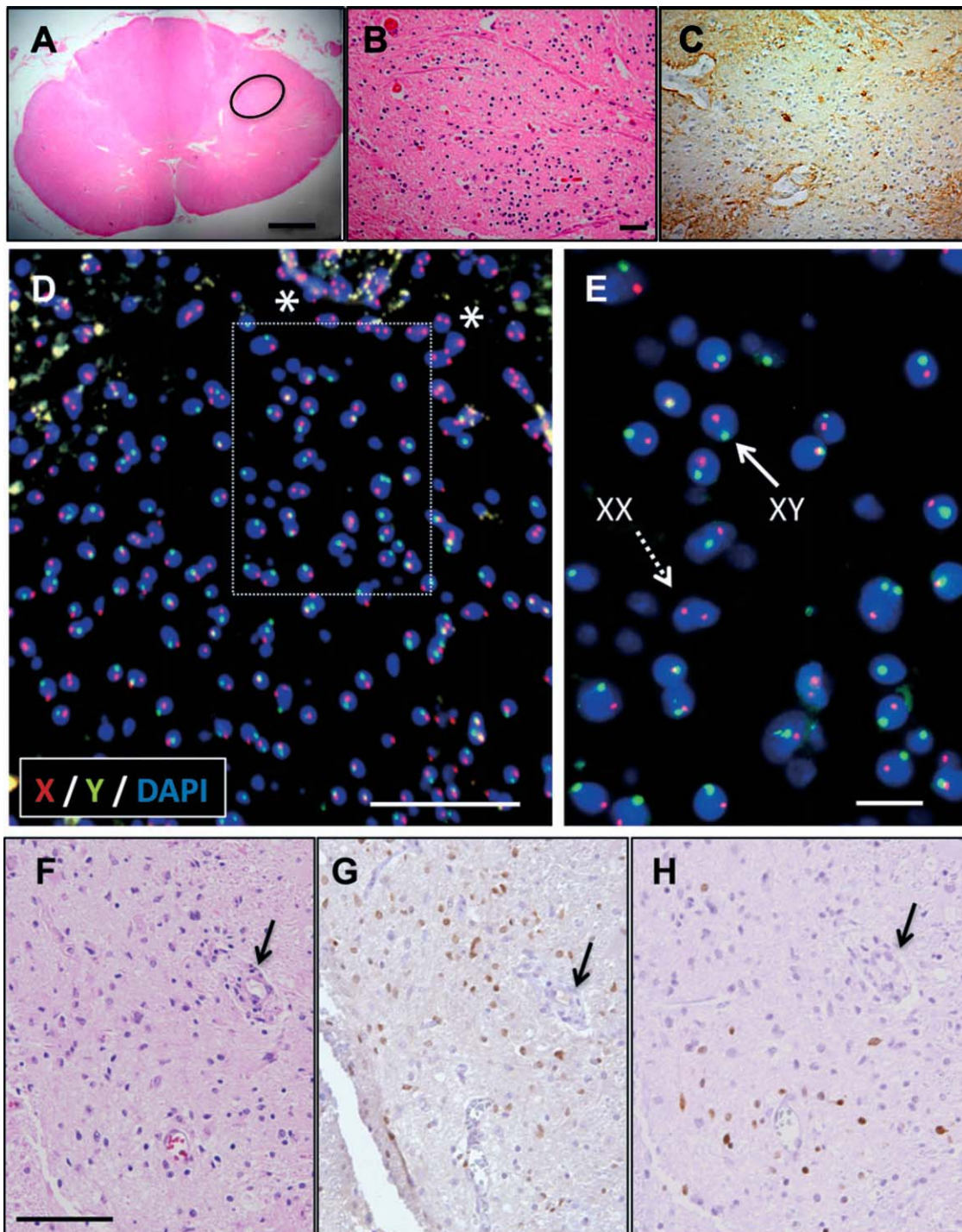
deal of excitement and allowed the transition to a phase IIa trial.

### **A Phase IIa Clinical Trial**

Given these encouraging results of the phase I safety trial, the FDA approved the phase IIa trial, “A Phase II, Open-label, Dose Escalation and Safety Study of Human Spinal Cord Derived Neural Stem Cell Transplantation for the Treatment of Amyotrophic Lateral Sclerosis” (NCT01730716). This trial was designed to assess the maximum tolerated dose of cells, measuring the same clinical assessments as the phase I trial, and treatment groups progressively received increasing doses of cells via intraspinal cord injections (Table 2). Subjects in Group A (n = 3) received 5 bilateral (10 total) cervical injections for a total of 2 million cells. Subjects in Groups B, C, and D (n = 3 each) then received 10 bilateral (20 total) cervical injections of increasing cell doses for a total of 4, 6, and 8 million cells, respectively. Finally, subjects in Group E (n = 3) received 8 million cells in 10 bilateral (20 total) cervical injections, followed a month later by a subsequent dose of 8 million cells in 10 bilateral (20 total) lumbar spinal cord injections, resulting in a total of 16 million cells. A training program for participating neurosurgeons on operation of the spinal injection system was implemented prior to extending the trial to new sites, and this standardization will be continued in future trials.

The final surgery was performed in July 2014, and data review is ongoing; however, the preliminary results are promising and the next phase II/III trial is in the early planning phase. Aspects of trial design that are currently under discussion include inclusion/exclusion criteria, the possibility of inclusion of experimental disease biomarkers, need for immunosuppression, appropriate primary outcome measures, and the feasibility and ethics of a placebo control group. Based on experience in the phase I and phase IIa trials, as well as the theory that stem cells improve the motor neuron microenvironment, it is anticipated that patients with early stage disease would likely benefit the most. Therefore, early stage patients without bulbar involvement will likely be the major target population in any future efficacy study. Important outcome measures include pulmonary function tests as well as assessment of motor strength, in addition to survival data.

However, these outcome measures may be meaningless without a group for comparison. Historical controls from previous ALS trials would likely be insufficiently matched to treatment groups in this stem cell paradigm. In an ideal world, any measure of therapeutic efficacy should be compared with a placebo control group.



**FIGURE 2:** Donor neural progenitor cell (NPC) localization and characterization using XY chromosome fluorescence *in situ* hybridization (FISH) and immunohistochemistry, respectively, in a female amyotrophic lateral sclerosis patient. (A) Hematoxylin and eosin (H&E) staining shows nests of cells in the female spinal cord (circle). (B) High-power image corresponding to the nest of cells outlined in A. (C) Sections stained with glial fibrillary acidic protein show lack of labeling in nest of cells. (D) FISH labeling shows numerous X (red) and Y (green)-positive donor cells counterstained with 4',6-diamino-2-phenylindole (DAPI; blue). Asterisks show XX-positive recipient cells in the surrounding regions. (E) Inset image from D. Donor NPCs are positive for XY (solid arrow). (F–H) H&E labeling of NPC graft (F; arrow) label with SOX2 (G) and NeuN (H). Scale bars: 1mm (A), 50  $\mu$ m (B–D), 10  $\mu$ m (E), 100  $\mu$ m (F–H). Reproduced with permission from Tadesse et al.<sup>99</sup>

Particularly in surgical trials, the placebo effect can be strong, as underscored by recent cellular therapy approaches for Parkinson disease.<sup>100</sup> Here lies the crux of

an ethical dilemma that accompanies stem cell trials; in a rapidly fatal disease such as ALS, is it ethical to subject patients to the risks of a sham surgical procedure and

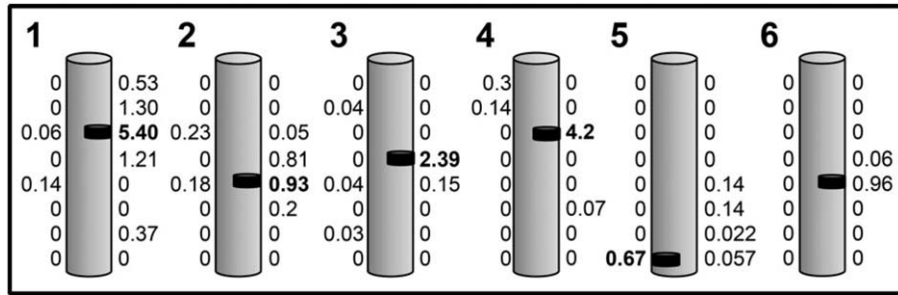
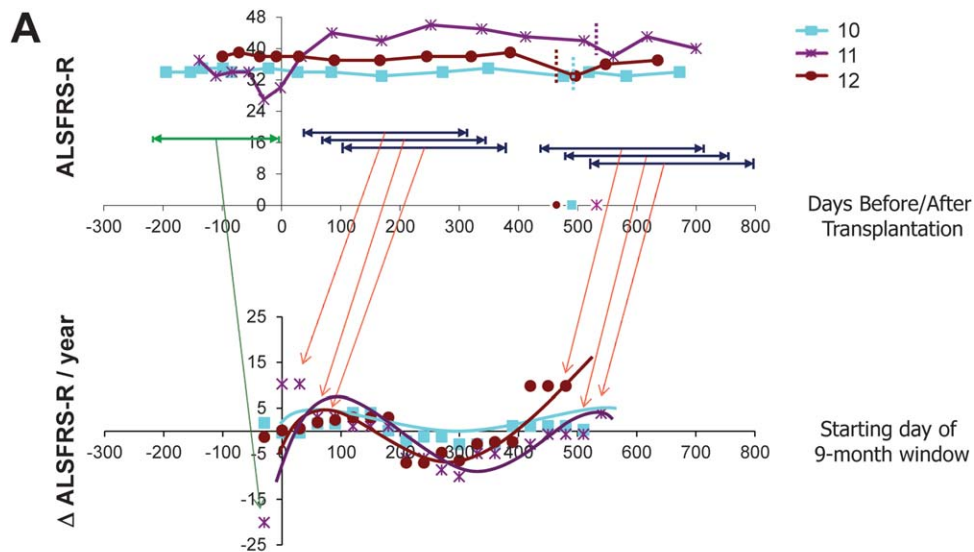


FIGURE 3: Identification of donor DNA in amyotrophic lateral sclerosis spinal cord. Schematic shows presence of donor genomic DNA from spinal cord autopsy samples in 6 patients (1–6) as determined by quantitative polymerase chain reaction. The numbers adjacent to each schematic cord represent the percentage of donor DNA in that tissue homogenate. Human neural progenitor cells (NPCs) were unilaterally injected into the lumbar spinal cord in Patients 1, 4, and 5, bilaterally into the lumbar spinal cord in Patients 2 and 3, and unilaterally into the cervical spinal cord in Patient 6. The black bar identifies the region containing the highest percentage of donor DNA, ranging from 0.67% to 5.4%. Reproduced with permission from Tadesse et al.<sup>99</sup>

immunosuppression for the sake of investigative rigor? Varying lead-in phases could be utilized, but, given the progressive nature of the disease, patients receiving stem cell transplants at a later stage will likely be a very different population than those receiving stem cells upfront.

Placebo surgery could be an option, with increasing degrees of risk having been proposed: from a mere general anesthetic, to skin incision only, to removal only of spinous processes, even up to full injections with a vehicle control. The tension between scientific harmony and



**B**

Patient ID	Presurgery	Post-Lumbar Surgery		Post-Cervical Surgery	
	$\Delta$ ALSFRS-R (per year)	Active period	$\Delta$ ALSFRS-R (per year)	Active period	$\Delta$ ALSFRS-R (per year)
10	1.8	4-13 mos	4	0-9 mos	4.1
11	-20.1	0-9 mos	10.2	0-9 mos	3.9
12	-1.3	4-13 mos	3	0-9 mos	9.8

FIGURE 4: Analysis of potential windows of neural progenitor cell biological activity in Subjects 10 to 12. Postsurgery data points for Group E subjects were divided into a series of 9-month windows beginning each month postimplantation, and slopes were calculated across each window using Amyotrophic Lateral Sclerosis Functional Rating Scale-Revised (ALSFRS-R) and compared to presurgical windows. (A) The top panel demonstrates ALSFRS-R scores for Group E subjects during the presurgical period (green) and representative ranges associated with the various sliding postsurgical 9-month windows (dark blue). The bottom panel demonstrates the slopes obtained for each sliding window, with the x-axis corresponding to the first month for each 9-month window. The first plotted slope for each subject corresponds to their presurgical progression rate. Slope values higher than the presurgical slope at baseline represent improved or attenuated progression rates during the designated window. Note that the starting month of the final sliding window for each patient coincides with the dates of the second surgery, which occur at 17.5, 19, and 16.6 months after the initial Cohort C surgery (time 0) for Subjects 10, 11, and 12, respectively. (B) The presurgical slope and postsurgical slopes associated with the window correlating to the peak benefit windows for both the lumbar and cervical postsurgery time frames are summarized. Reproduced with permission from Feldman et al.<sup>95</sup>

**TABLE 2. Dose Escalation Paradigm for Phase IIa Trial of Neural Progenitor Cells in Amyotrophic Lateral Sclerosis**

Group	Number Enrolled	Number of Injections	Target	Final Cell Dose
A	3	10 total, 5 per side	Cervical cord	$2 \times 10^6$
B	3	20 total, 10 per side	Cervical cord	$4 \times 10^6$
C	3	20 total, 10 per side	Cervical cord	$6 \times 10^6$
D	3	20 total, 10 per side	Cervical cord	$8 \times 10^6$
E	3	20 total, 10 per side for each target, staged	Cervical cord, followed by lumbar cord	$16 \times 10^6$

clinical nonmalfeasance will have to be carefully negotiated as these trials move forward.

### Conclusions: The Horizon

The journey from the initial studies utilizing stem cells in preclinical models of ALS to the completion of the phase I and phase IIa trials has been long and storied, yet immensely rewarding. Although we have focused on 1 series of trials utilizing NPCs, the potential benefits of cell-based therapy in ALS are being actively studied internationally. Many trials focus on autologous, intrathecal administration of bone marrow-, umbilical cord-, or adipose-derived mesenchymal stem cells, such as trials in China (NCT01494480), Poland (NCT02193893), Iran (NCT02116634, NCT02492516), South Korea,<sup>101</sup> and India (NCT02242071), and at the Mayo Clinic, USA (NCT01609283). A paradigm from Brainstorm-Cell Therapeutics modifies autologous mesenchymal stem cells to secrete a variety of neurotrophic factors prior to intramuscular and intrathecal coimplantation (NCT02017912).<sup>78</sup> Similarly, Spanish groups have performed intraspinal injection of autologous mesenchymal stem cells,<sup>76</sup> and are comparing intravenous, intramuscular, intraspinal, and intrathecal therapy (NCT01254539, NCT02286011, NCT02290886). A planned trial by Q Therapeutics utilizes the technique of intraspinal injection described here for the introduction of glial-restricted neural progenitor cells (NCT02478450).

Moving forward, continued evaluation of these trials as well as other maturing trials for ALS (reviewed elsewhere<sup>83,85,86,102</sup> should consider some basic tenets of stem cell therapy: (1) stem cells should be readily obtainable in numbers sufficient for clinical use; (2) cells should minimize the potential for tumor formation yet survive in sufficient numbers to benefit motor neurons; (3) the paradigm for cell delivery should balance CNS penetration and therapeutic potential with procedural reproducibility and safety; (4) clinical trial design should

be robust, with sufficient subjects to glean meaningful data, yet be sensitive to the varied presentation and course of disease; (5) trial outcomes should remain objective, with measurements such as the ALSFRS-R and pulmonary function; and (6) subsequent analysis should include delineation of the survival, function, and potential mechanism of transplanted cells. Also relevant to future trial planning is the projected cost of this therapy. Although accurate estimates cannot be provided given the early investigative aspect of these trials, the bulk of costs will likely be associated with the stem cell product, surgical and perioperative costs, and any ongoing immunosuppression. For the phase I and IIa NPC transplantation trials, the stem cell product was provided at no cost by Neuralstem, Inc. Given the heterogeneity of the modern health care landscape, the hospital and procedural fees associated with intraspinal injection, postoperative hospitalization, and ongoing immunosuppression will vary from center to center. Certainly, the cost of the stem cells as well as the added surgical and medical costs associated with this procedure will need to be balanced with the estimated annual cost of disease, which is about \$63,693 per year, per patient.<sup>1</sup>

These collective tenets and considerations will be heavily weighed as we enter into planning the next phase of our clinical trial and must certainly be considered with the continued translation and evaluation of other cellular therapy paradigms as well.

In addition to the data obtained thus far in these and other stem cell clinical trials, the nascent ideas being nurtured in the laboratory also continue to inform the future of cell-based therapy for ALS. Particularly, much excitement surrounds applications harnessing the potential of induced pluripotent stem (iPS) cells, as the ability to dedifferentiate adult fibroblasts into pluripotent stem cells confers a range of exciting and newly attainable possibilities. Most immediately, motor neurons derived by iPS technology from donated



ALS patient tissue will allow *in vitro* study of disease mechanisms and high-throughput screening of potential therapeutics.<sup>103–105</sup> Furthermore, healthy individuals, and even ALS patients themselves, now become potential donors of stem cells that could be used in the study and treatment of ALS.<sup>106,107</sup> At this time, although iPS cells would negate the need for immunosuppression, the logistics and cost of dedifferentiating fibroblasts, expanding a stem cell population, and differentiation prior to reimplantation (to prevent teratoma formation) within a time window prior to ALS progression are still prohibitive and at times inconsistent. However, as this and other technologies mature, iPS-based therapy may become a reality in the near future. Thus, in the stem cell era, simultaneous progress in both clinical and laboratory settings is advancing the field by providing patients with a therapy that may truly modify the course of disease while also enabling insight into the mechanisms by which stem cells provide therapeutic benefit, respectively. With this cycle between the laboratory and the clinic ongoing, stem cell therapy holds promise not only in ALS, but can be implemented in a breadth of other neurologic conditions for which we can hold an immense degree of optimism.

### Acknowledgment

Funding support during the preparation of this article was provided by the Program for Neurology Research and Discovery, A. Alfred Taubman Medical Research Institute, and NIH National Institute of Neurological Disorders and Stroke (University of Michigan Clinician Scientist Training Program, R25NS089450, K.S.C.).

### Author Contributions

K.S.C. and E.L.F. contributed to concept and study design; K.S.C., S.A.S., and E.L.F. contributed to drafting the manuscript and figures.

### Potential Conflicts of Interest

Nothing to report.

### References

- Larkindale J, Yang W, Hogan PF, et al. Cost of illness for neuromuscular diseases in the United States. *Muscle Nerve* 2014;49:431–438.
- Gordon PH. Amyotrophic lateral sclerosis: an update for 2013 Clinical Features, Pathophysiology, Management and Therapeutic Trials. *Aging Dis* 2013;4:295–310.
- Robberecht W, Philips T. The changing scene of amyotrophic lateral sclerosis. *Nat Rev Neurosci* 2013;14:248–264.
- Bellingham MC. A review of the neural mechanisms of action and clinical efficiency of riluzole in treating amyotrophic lateral sclerosis: what have we learned in the last decade? *CNS Neurosci Ther* 2011;17:4–31.
- Grosskreutz J, Van Den Bosch L, Keller BU. Calcium dysregulation in amyotrophic lateral sclerosis. *Cell Calcium* 2010;47:165–174.
- Martin LJ, Chang Q. Inhibitory synaptic regulation of motoneurons: a new target of disease mechanisms in amyotrophic lateral sclerosis. *Mol Neurobiol* 2012;45:30–42.
- Redler RL, Dokholyan NV. The complex molecular biology of amyotrophic lateral sclerosis (ALS). *Prog Mol Biol Transl Sci* 2012;107:215–262.
- Wainger BJ, Kiskinis E, Mellin C, et al. Intrinsic membrane hyperexcitability of amyotrophic lateral sclerosis patient-derived motor neurons. *Cell Rep* 2014;7:1–11.
- Lunn JS, Hefferan MP, Marsala M, Feldman EL. Stem cells: comprehensive treatments for amyotrophic lateral sclerosis in conjunction with growth factor delivery. *Growth Factors* 2009;27:133–140.
- Tovar YRLB, Ramirez-Jarquín UN, Lazo-Gomez R, Tapia R. Trophic factors as modulators of motor neuron physiology and survival: implications for ALS therapy. *Front Cell Neurosci* 2014;8:61.
- Vincent AM, Mobley BC, Hiller A, Feldman EL. IGF-I prevents glutamate-induced motor neuron programmed cell death. *Neurobiol Dis* 2004;16:407–416.
- Rizzo F, Riboldi G, Salani S, et al. Cellular therapy to target neuroinflammation in amyotrophic lateral sclerosis. *Cell Mol Life Sci* 2014;71:999–1015.
- Cozzolino M, Ferri A, Valle C, Carri MT. Mitochondria and ALS: implications from novel genes and pathways. *Mol Cell Neurosci* 2013;55:44–49.
- Martin LJ, Liu Z, Chen K, et al. Motor neuron degeneration in amyotrophic lateral sclerosis mutant superoxide dismutase-1 transgenic mice: mechanisms of mitochondriopathy and cell death. *J Comp Neurol* 2007;500:20–46.
- Tadic V, Prell T, Lautenschlaeger J, Grosskreutz J. The ER mitochondria calcium cycle and ER stress response as therapeutic targets in amyotrophic lateral sclerosis. *Front Cell Neurosci* 2014;8:147.
- Mitsumoto H, Brooks BR, Silani V. Clinical trials in amyotrophic lateral sclerosis: why so many negative trials and how can trials be improved? *Lancet Neurol* 2014;13:1127–1138.
- Bensimon G, Lacomblez L, Meininger V. A controlled trial of riluzole in amyotrophic lateral sclerosis. ALS/Riluzole Study Group. *N Engl J Med* 1994;330:585–591.
- Desnuelle C, Dib M, Garrel C, Favier A. A double-blind, placebo-controlled randomized clinical trial of alpha-tocopherol (vitamin E) in the treatment of amyotrophic lateral sclerosis. ALS Riluzole-Tocopherol Study Group. *Amyotroph Lateral Scler Other Motor Neuron Disord* 2001;2:9–18.
- Dupuis L, Dengler R, Heneka MT, et al. A randomized, double blind, placebo-controlled trial of pioglitazone in combination with riluzole in amyotrophic lateral sclerosis. *PLoS One* 2012;7:e37885.
- Miller RG, Moore DH Jr, Gelinas DF, et al. Phase III randomized trial of gabapentin in patients with amyotrophic lateral sclerosis. *Neurology* 2001;56:843–848.
- Sorenson EJ, Windbank AJ, Mandrekar JN, et al. Subcutaneous IGF-1 is not beneficial in 2-year ALS trial. *Neurology* 2008;71:1770–1775.
- Meininger V, Bensimon G, Bradley WR, et al. Efficacy and safety of xaliproden in amyotrophic lateral sclerosis: results of two phase III trials. *Amyotroph Lateral Scler Other Motor Neuron Disord* 2004;5:107–117.
- Pastula DM, Moore DH, Bedlack RS. Creatine for amyotrophic lateral sclerosis/motor neuron disease. *Cochrane Database Syst Rev* 2012;12:CD005225.

24. Sacca F, Quarantelli M, Rinaldi C, et al. A randomized controlled clinical trial of growth hormone in amyotrophic lateral sclerosis: clinical, neuroimaging, and hormonal results. *J Neurol* 2012;259:132–138.
25. Cudkowicz ME, Shefner JM, Schoenfeld DA, et al. Trial of celecoxib in amyotrophic lateral sclerosis. *Ann Neurol* 2006;60:22–31.
26. Gordon PH, Moore DH, Miller RG, et al. Efficacy of minocycline in patients with amyotrophic lateral sclerosis: a phase III randomised trial. *Lancet Neurol* 2007;6:1045–1053.
27. Miller R, Bradley W, Cudkowicz M, et al. Phase II/III randomized trial of TCH346 in patients with ALS. *Neurology* 2007;69:776–784.
28. Kaufmann P, Thompson JL, Levy G, et al. Phase II trial of CoQ10 for ALS finds insufficient evidence to justify phase III. *Ann Neurol* 2009;66:235–244.
29. Lauria G, Dalla Bella E, Antonini G, et al. Erythropoietin in amyotrophic lateral sclerosis: a multicentre, randomised, double blind, placebo controlled, phase III study. *J Neurol Neurosurg Psychiatry* 2015;86:879–886.
30. Meininger V, Drory VE, Leigh PN, et al. Glatiramer acetate has no impact on disease progression in ALS at 40 mg/day: a double-blind, randomized, multicentre, placebo-controlled trial. *Amyotroph Lateral Scler* 2009;10:378–383.
31. Aggarwal SP, Zinman L, Simpson E, et al. Safety and efficacy of lithium in combination with riluzole for treatment of amyotrophic lateral sclerosis: a randomised, double-blind, placebo-controlled trial. *Lancet Neurol* 2010;9:481–488.
32. Morrison KE, Dhariwal S, Hornabrook R, et al. Lithium in patients with amyotrophic lateral sclerosis (LiCALS): a phase 3 multicentre, randomised, double-blind, placebo-controlled trial. *Lancet Neurol* 2013;12:339–345.
33. de Carvalho M, Pinto S, Costa J, et al. A randomized, placebo-controlled trial of memantine for functional disability in amyotrophic lateral sclerosis. *Amyotroph Lateral Scler* 2010;11:456–460.
34. Cudkowicz ME, Titus S, Kearney M, et al. Safety and efficacy of ceftriaxone for amyotrophic lateral sclerosis: a multi-stage, randomised, double-blind, placebo-controlled trial. *Lancet Neurol* 2014;13:1083–1091.
35. Cudkowicz ME, van den Berg LH, Shefner JM, et al. Dexamipexole versus placebo for patients with amyotrophic lateral sclerosis (EMPOWER): a randomised, double-blind, phase 3 trial. *Lancet Neurol* 2013;12:1059–1067.
36. Lenglet T, Lacomblez L, Abitbol JL, et al. A phase II-III trial of olesoxime in subjects with amyotrophic lateral sclerosis. *Eur J Neurol* 2014;21:529–536.
37. Lunn JS, Sakowski SA, Kim B, et al. Vascular endothelial growth factor prevents G93A-SOD1-induced motor neuron degeneration. *Dev Neurobiol* 2009;69:871–884.
38. Xu L, Yan J, Chen D, et al. Human neural stem cell grafts ameliorate motor neuron disease in SOD-1 transgenic rats. *Transplantation* 2006;82:865–875.
39. Lepore AC, Rauck B, Dejea C, et al. Focal transplantation-based astrocyte replacement is neuroprotective in a model of motor neuron disease. *Nat Neurosci* 2008;11:1294–1301.
40. Hefferan MP, Galik J, Kakihana O, et al. Human neural stem cell replacement therapy for amyotrophic lateral sclerosis by spinal transplantation. *PLoS One* 2012;7:e42614.
41. Wichterle H, Lieberam I, Porter JA, Jessell TM. Directed differentiation of embryonic stem cells into motor neurons. *Cell* 2002;110:385–397.
42. Nagai M, Aoki M, Miyoshi I, et al. Rats expressing human cytosolic copper-zinc superoxide dismutase transgenes with amyotrophic lateral sclerosis: associated mutations develop motor neuron disease. *J Neurosci* 2001;21:9246–9254.
43. Rosen DR, Siddique T, Patterson D, et al. Mutations in Cu/Zn superoxide dismutase gene are associated with familial amyotrophic lateral sclerosis. *Nature* 1993;362:59–62.
44. Lopez-Gonzalez R, Kunckles P, Velasco I. Transient recovery in a rat model of familial amyotrophic lateral sclerosis after transplantation of motor neurons derived from mouse embryonic stem cells. *Cell Transplant* 2009;18:1171–1181.
45. Deshpande DM, Kim YS, Martinez T, et al. Recovery from paralysis in adult rats using embryonic stem cells. *Ann Neurol* 2006;60:32–44.
46. Harper JM, Krishnan C, Darman JS, et al. Axonal growth of embryonic stem cell-derived motoneurons in vitro and in motoneuron-injured adult rats. *Proc Natl Acad Sci U S A* 2004;101:7123–7128.
47. Gothelf Y, Abramov N, Harel A, Offen D. Safety of repeated transplantations of neurotrophic factors-secreting human mesenchymal stromal stem cells. *Clin Transl Med* 2014;3:21.
48. Nanou A, Higginbottom A, Valori CF, et al. Viral delivery of anti-oxidant genes as a therapeutic strategy in experimental models of amyotrophic lateral sclerosis. *Mol Ther* 2013;21:1486–1496.
49. Kliem MA, Heeke BL, Franz CK, et al. Intramuscular administration of a VEGF zinc finger transcription factor activator (VEGF-ZFP-TF) improves functional outcomes in SOD1 rats. *Amyotroph Lateral Scler* 2011;12:331–339.
50. Suzuki M, McHugh J, Tork C, et al. Direct muscle delivery of GDNF with human mesenchymal stem cells improves motor neuron survival and function in a rat model of familial ALS. *Mol Ther* 2008;16:2002–2010.
51. Henriques A, Pitzer C, Dittgen T, et al. CNS-targeted viral delivery of G-CSF in an animal model for ALS: improved efficacy and preservation of the neuromuscular unit. *Mol Ther* 2011;19:284–292.
52. Foust KD, Flotte TR, Reier PJ, Mandel RJ. Recombinant adeno-associated virus-mediated global anterograde delivery of glial cell line-derived neurotrophic factor to the spinal cord: comparison of rubrospinal and corticospinal tracts in the rat. *Hum Gene Ther* 2008;19:71–82.
53. Martínez HR, Molina-Lopez JF, González-Garza MT, et al. Stem cell transplantation in amyotrophic lateral sclerosis patients: methodological approach, safety, and feasibility. *Cell Transplant* 2012;21:1899–1907.
54. Chen L, Chen D, Xi H, et al. Olfactory ensheathing cell neurorestoration for amyotrophic lateral sclerosis patients: benefits from multiple transplantations. *Cell Transplant* 2012;21(suppl 1):S65–S77.
55. Boillee S, Yamanaka K, Lobsiger CS, et al. Onset and progression in inherited ALS determined by motor neurons and microglia. *Science* 2006;312:1389–1392.
56. Hossaini M, Cardona Cano S, van Dis V, et al. Spinal inhibitory interneuron pathology follows motor neuron degeneration independent of glial mutant superoxide dismutase 1 expression in SOD1-ALS mice. *J Neuropathol Exp Neurol* 2011;70:662–677.
57. Zagami CJ, Beart PM, Wallis N, et al. Oxidative and excitotoxic insults exert differential effects on spinal motoneurons and astrocytic glutamate transporters: implications for the role of astroglial cells in amyotrophic lateral sclerosis. *Glia* 2009;57:119–135.
58. Clement AM, Nguyen MD, Roberts EA, et al. Wild-type nonneuronal cells extend survival of SOD1 mutant motor neurons in ALS mice. *Science* 2003;302:113–117.
59. Evans MC, Couch Y, Sibson N, Turner MR. Inflammation and neurovascular changes in amyotrophic lateral sclerosis. *Mol Cell Neurosci* 2013;53:34–41.
60. Murdock BJ, Bender DE, Segal BM, Feldman EL. The dual roles of immunity in ALS: injury overrides protection. *Neurobiol Dis* 2015;77:1–12.
61. Pansarasa O, Rossi D, Berardinelli A, Cereda C. Amyotrophic lateral sclerosis and skeletal muscle: an update. *Mol Neurobiol* 2014;49:984–990.

62. Moloney EB, de Winter F, Verhaagen J. ALS as a distal axonopathy: molecular mechanisms affecting neuromuscular junction stability in the presymptomatic stages of the disease. *Front Neurosci* 2014;8:252.
63. Chew S, Khandji AG, Montes J, et al. Olfactory ensheathing glia injections in Beijing: misleading patients with ALS. *Amyotroph Lateral Scler* 2007;8:314–316.
64. Giordana MT, Grifoni S, Votta B, et al. Neuropathology of olfactory ensheathing cell transplantation into the brain of two amyotrophic lateral sclerosis (ALS) patients. *Brain Pathol* 2010;20:730–737.
65. Huang H, Chen L, Xi H, et al. Fetal olfactory ensheathing cells transplantation in amyotrophic lateral sclerosis patients: a controlled pilot study. *Clin Transplant* 2008;22:710–718.
66. Piepers S, van den Berg LH. No benefits from experimental treatment with olfactory ensheathing cells in patients with ALS. *Amyotroph Lateral Scler* 2010;11:328–330.
67. Zhang Y, Wang L, Fu Y, et al. Preliminary investigation of effect of granulocyte colony stimulating factor on amyotrophic lateral sclerosis. *Amyotroph Lateral Scler* 2009;10:430–431.
68. Cashman N, Tan L-Y, Krieger C, et al. Pilot study of granulocyte colony stimulating factor (G-CSF)-mobilized peripheral blood stem cells in amyotrophic lateral sclerosis (ALS). *Muscle Nerve* 2008;37:620–625.
69. Chiò A, Mora G, La Bella V, et al. Repeated courses of granulocyte colony-stimulating factor in amyotrophic lateral sclerosis: clinical and biological results from a prospective multicenter study. *Muscle Nerve* 2011;43:189–195.
70. Janson CG, Ramesh TM, Doring MJ, et al. Human intrathecal transplantation of peripheral blood stem cells in amyotrophic lateral sclerosis. *J Hematother Stem Cell Res* 2001;10:913–915.
71. Nefussy B, Artamonov I, Deutsch V, et al. Recombinant human granulocyte-colony stimulating factor administration for treating amyotrophic lateral sclerosis: a pilot study. *Amyotroph Lateral Scler* 2010;11:187–193.
72. Tarella C, Rutella S, Gualandi F, et al. Consistent bone marrow-derived cell mobilization following repeated short courses of granulocyte-colony-stimulating factor in patients with amyotrophic lateral sclerosis: results from a multicenter prospective trial. *Cytotherapy* 2010;12:50–59.
73. Appel SH, Engelhardt JI, Henkel JS, et al. Hematopoietic stem cell transplantation in patients with sporadic amyotrophic lateral sclerosis. *Neurology* 2008;71:1326–1334.
74. Kim KS, Lee HJ, An J, et al. Transplantation of human adipose tissue-derived stem cells delays clinical onset and prolongs life span in ALS mouse model. *Cell Transplant* 2014;23:1585–1597.
75. Baek W, Kim YS, Koh SH, et al. Stem cell transplantation into the intraventricular space via an Ommaya reservoir in a patient with amyotrophic lateral sclerosis. *J Neurosurg Sci* 2012;56:261–263.
76. Blanquer M, Moraleda JM, Iñiesta F, et al. Neurotrophic bone marrow cellular nests prevent spinal motoneuron degeneration in amyotrophic lateral sclerosis patients: a pilot safety study. *Stem Cells* 2012;30:1277–1285.
77. Deda H, Inci MC, Kurekçi AE, et al. Treatment of amyotrophic lateral sclerosis patients by autologous bone marrow-derived hematopoietic stem cell transplantation: a 1-year follow-up. *Cytotherapy* 2009;11:18–25.
78. Karussis D, Karageorgiou C, Vaknin-Dembinsky A, et al. Safety and immunological effects of mesenchymal stem cell transplantation in patients with multiple sclerosis and amyotrophic lateral sclerosis. *Arch Neurol* 2010;67:1187–1194.
79. Mazzini L, Mareschi K, Ferrero I, et al. Mesenchymal stromal cell transplantation in amyotrophic lateral sclerosis: a long-term safety study. *Cytotherapy* 2012;14:56–60.
80. Moviglia GA, Moviglia-Brandolino MT, Varela GS, et al. Feasibility, safety, and preliminary proof of principles of autologous neural stem cell treatment combined with T-cell vaccination for ALS patients. *Cell Transplant* 2012;21(suppl 1):S57–S63.
81. Prabhakar S, Marwaha N, Lal V, et al. Autologous bone marrow-derived stem cells in amyotrophic lateral sclerosis: a pilot study. *Neurol India* 2012;60:465–469.
82. Glass JD, Boulis NM, Johe K, et al. Lumbar intraspinal injection of neural stem cells in patients with amyotrophic lateral sclerosis: results of a phase I trial in 12 patients. *Stem Cells* 2012;30:1144–1151.
83. Lunn JS, Sakowski SA, Feldman EL. Concise review: stem cell therapies for amyotrophic lateral sclerosis: recent advances and prospects for the future. *Stem Cells* 2014;32:1099–1109.
84. Boulis NM, Federici T, Glass JD, et al. Translational stem cell therapy for amyotrophic lateral sclerosis. *Nat Rev Neurol* 2011;8:172–176.
85. Thomsen GM, Gowing G, Svendsen S, Svendsen CN. The past, present and future of stem cell clinical trials for ALS. *Exp Neurol* 2014;262(pt B):127–137.
86. Goutman SA, Chen KS, Feldman EL. Recent advances and the future of stem cell therapies in amyotrophic lateral sclerosis. *Neurotherapeutics* 2015;12:428–448.
87. Xu L, Shen P, Hazel T, et al. Dual transplantation of human neural stem cells into cervical and lumbar cord ameliorates motor neuron disease in SOD1 transgenic rats. *Neurosci Lett* 2011;494:222–226.
88. Dlouhy BJ, Awe O, Rao RC, et al. Autograft-derived spinal cord mass following olfactory mucosal cell transplantation in a spinal cord injury patient: case report. *J Neurosurg Spine* 2014;21:618–622.
89. Lunn JS, Pacut C, Stern E, et al. Intraspinal transplantation of neurogenin-expressing stem cells generates spinal cord neural progenitors. *Neurobiol Dis* 2012;46:59–68.
90. Xu L, Ryugo DK, Pongstapom T, et al. Human neural stem cell grafts in the spinal cord of SOD1 transgenic rats: differentiation and structural integration into the segmental motor circuitry. *J Comp Neurol* 2009;514:297–309.
91. Yan J, Xu L, Welsh AM, et al. Extensive neuronal differentiation of human neural stem cell grafts in adult rat spinal cord. *PLoS Med* 2007;4:e39.
92. Raore B, Federici T, Taub J, et al. Cervical multilevel intraspinal stem cell therapy: assessment of surgical risks in Gottingen minipigs. *Spine* 2011;36:E164–E171.
93. Riley JP, Raore B, Taub JS, et al. Platform and cannula design improvements for spinal cord therapeutics delivery. *Neurosurgery* 2011;69(2 suppl operative):ons147–ons154; discussion ons155.
94. Usvald D, Vodicka P, Hlucilova J, et al. Analysis of dosing regimen and reproducibility of intraspinal grafting of human spinal stem cells in immunosuppressed minipigs. *Cell Transplant* 2010;19:1103–1122.
95. Feldman EL, Boulis NM, Hur J, et al. Intraspinal neural stem cell transplantation in amyotrophic lateral sclerosis: phase 1 trial outcomes. *Ann Neurol* 2014;75:363–373.
96. Lunn JS, Sakowski SA, Federici T, et al. Stem cell technology for the study and treatment of motor neuron diseases. *Regen Med* 2011;6:201–213.
97. Riley J, Federici T, Polak M, et al. Intraspinal stem cell transplantation in amyotrophic lateral sclerosis: a phase I safety trial, technical note, and lumbar safety outcomes. *Neurosurgery* 2012;71:405–416; discussion 416.
98. Riley J, Glass J, Feldman EL, et al. Intraspinal stem cell transplantation in amyotrophic lateral sclerosis: a phase I trial, cervical microinjection, and final surgical safety outcomes. *Neurosurgery* 2014;74:77–87.
99. Tadesse T, Gearing M, Senitzer D, et al. Analysis of graft survival in a trial of stem cell transplant in ALS. *Ann Clin Transl Neurol* 2014;1:900–908.

100. Olanow CW, Goetz CG, Kordower JH, et al. A double-blind controlled trial of bilateral fetal nigral transplantation in Parkinson's disease. *Ann Neurol* 2003;54:403–414.
101. Oh KW, Moon C, Kim HY, et al. Phase I trial of repeated intrathecal autologous bone marrow-derived mesenchymal stromal cells in amyotrophic lateral sclerosis. *Stem Cells Transl Med* 2015;4:590–597.
102. Faravelli I, Riboldi G, Nizzardo M, et al. Stem cell transplantation for amyotrophic lateral sclerosis: therapeutic potential and perspectives on clinical translation. *Cell Mol Life Sci* 2014;71:3257–3268.
103. Burkhardt MF, Martinez FJ, Wright S, et al. A cellular model for sporadic ALS using patient-derived induced pluripotent stem cells. *Mol Cell Neurosci* 2013;56:355–364.
104. Dimos JT, Rodolfa KT, Niakan KK, et al. Induced pluripotent stem cells generated from patients with ALS can be differentiated into motor neurons. *Science* 2008;321:1218–1221.
105. Egawa N, Kitaoka S, Tsukita K, et al. Drug screening for ALS using patient-specific induced pluripotent stem cells. *Sci Transl Med* 2012;4:145ra04.
106. Kondo T, Funayama M, Tsukita K, et al. Focal transplantation of human iPSC-derived glial-rich neural progenitors improves lifespan of ALS mice. *Stem Cell Rep* 2014;3:242–249.
107. Sareen D, Gowing G, Sahabian A, et al. Human induced pluripotent stem cells are a novel source of neural progenitor cells (iNPCs) that migrate and integrate in the rodent spinal cord. *J Comp Neurol* 2014;522:2707–2728.