



# Freezing Cancer in its Tracks

**ProSense® is the first and only medical device to be granted U.S. FDA marketing authorization for the local treatment of early-stage low-risk breast cancer with endocrine therapy**

(Nasdaq: ICCM)

[icecure-medical.com](https://www.icecure-medical.com)

December 2025

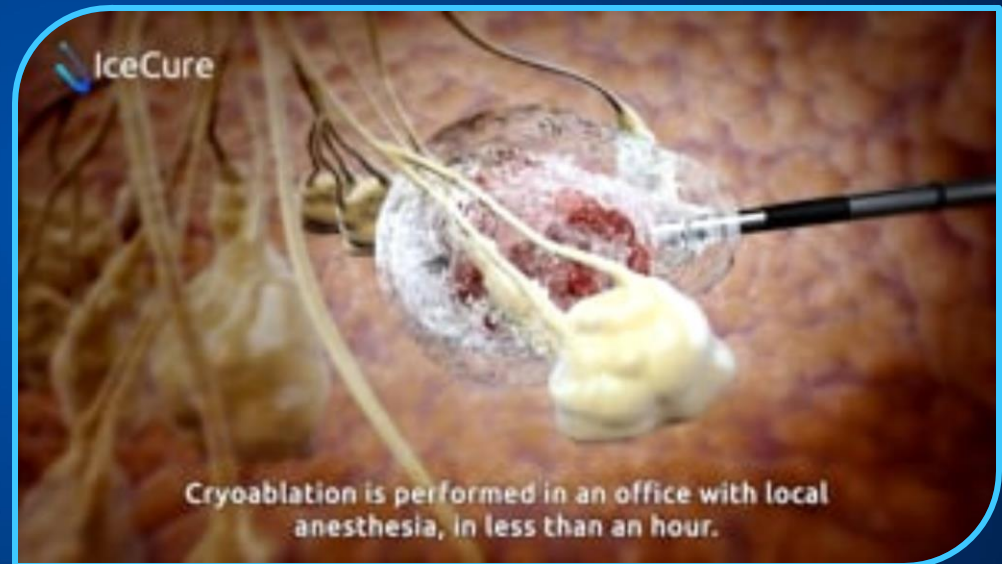
# Forward Looking Statements

This press release contains forward-looking statements within the meaning of the "safe harbor" provisions of the Private Securities Litigation Reform Act of 1995 and other Federal securities laws. Words such as "expects," "anticipates," "intends," "plans," "believes," "seeks," "estimates" and similar expressions or variations of such words are intended to identify forward-looking statements. For example, IceCure Medical Ltd. ("IceCure", "IceCure Medical" or the "Company") is using forward looking statements in this press release when it discusses: the expected growth of the tumor ablation market; the potential for ProSense to set a new standard of care; the Company's post-market study plan and its support of ProSense commercial roll-out; that Terumo Corporation is expected to submit its request for breast cancer clearance to the Japanese Pharmaceuticals and Medical Devices Agency by the end of 2025; its cash position; business, regulatory, marketing and commercialization strategy; prospective regulatory approvals and the expected timing thereof for its various products worldwide; that the FDA 510(k) regulatory clearance for XSense and its commercialization may lead to new uses for certain other clinical indications; the prospective soft launch of XSense in the first quarter of 2026; the expected number of total breast cancer diagnoses in 2025; that cryoablation may require further clinical trial studies; that additional coverage is expected upon the establishment of the permanent CPT Category I code; that the Company anticipates greater market traction in the rest of the world based on positive U.S. ICE3 final results; that more data is expected with ongoing studies of ProSense in 2025; that there is a growing number of distribution partnerships with numerous recent regulatory approvals; and that the potential benefits and impact IceCure's products could have on improving patient health care.

# Introducing ProSense®: A minimally invasive choice to surgery with advanced liquid nitrogen-based technology

**ProSense® is the first and only medical device to be granted U.S. FDA marketing authorization for the local treatment of breast cancer**

- Cryoablation is a minimally-invasive treatment performed under guided imaging – ultrasound (US) or computerized tomography (CT) –that uses extreme cold to freeze and accurately destroy benign or cancerous tumors
- IceCure's flagship product, ProSense®, cryoablates tumors quickly and with minimal pain
- ProSense® utilizes the ultracold power of liquid nitrogen (LN2) for maximum freezing, safety and efficacy and is used for a broad range of indications including breast cancer



<https://vimeo.com/911112459?share=copy>

# Company Highlights



In October 2025, ProSense® received FDA marketing authorization for low-risk breast cancer in women aged 70 and above



Growing number of global distribution agreements



Wide market applications: \$2.4B tumor market by 2028<sup>1</sup>



Regulatory approvals in 15 countries, including the U.S. FDA, CE (Europe), Brazil, India, and China



2024 Winner of Scientific Impact Award at American Society of Breast Surgeons<sup>2</sup> (ASBrS) for ICE3 data



Reimbursement: CPT III for breast cancer cryoablation facility fee established



Over 54 patents in IP portfolio for advanced LN2 cryoablation technology



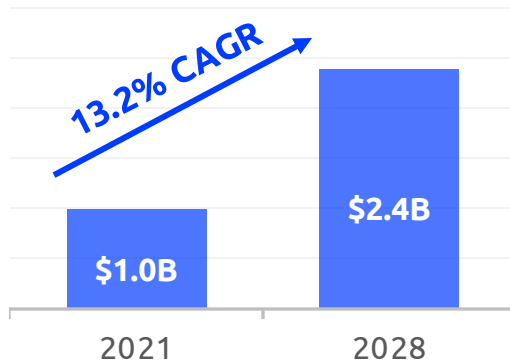
FDA 510(k) clearance granted for XSense™ next generation cryoablation system



Excellent patient & physician feedback

# Market Opportunities

## Tumor Ablation Market Expected to Reach \$2.4B in 2028<sup>1</sup>



Compound annual growth rate (CAGR) driven by non/minimally invasive treatments like cryoablation

Growing cancer burden

Increasing demands for non/minimally invasive solutions

Push for reduced cost of care by insurers and payers

<sup>1</sup> Estimated, according to Grand View Research, Inc. ([www.grandviewresearch.com/industry-analysis/tumor-ablation-market](http://www.grandviewresearch.com/industry-analysis/tumor-ablation-market)) Data is for all tumor ablation technologies and indications, including heat ablation Cryoablation, RF, MW and others. The information herein has not been independently verified by the company

## US Cryoablation Market 2025

### Breast Tumors

- Approximately 316,950 new invasive breast cancer patients<sup>2</sup>
- 10% of US women estimated to have fibroadenomas<sup>3</sup>

### Interventional Radiology

- 81,610 new kidney cases<sup>4</sup>
- 42,240 new liver cancer cases<sup>5</sup>
- 226,650 new lung cancer cases<sup>6</sup>



<sup>2</sup> <https://www.cancer.org/cancer/types/breast-cancer/about/how-common-is-breast-cancer.html>  
<sup>3</sup> <https://www.ncbi.nlm.nih.gov/books/NBK535345/#article-18600.s6>  
<sup>4</sup> <https://www.cancer.org/cancer/types/kidney-cancer/about/key-statistics.html> - 2024 numbers  
<sup>5</sup> <https://www.cancer.org/cancer/types/liver-cancer/about/what-is-key-statistics.html>  
<sup>6</sup> <https://www.cancer.org/cancer/types/lung-cancer/about/key-statistics.html>

# Regulatory Approvals Worldwide

- **FDA Clearance:**

- Local treatment of breast cancer in patients aged 70+ with low-risk breast cancer in combination with adjuvant endocrine therapy. Includes patients not suitable for surgery.
- General minimally-invasive cryoablation applications with specific indications including kidney, liver, neurology, fibroadenoma

- **CE mark** for benign or malignant tissue of the breast, lung, liver, kidney, musculoskeletal (bone), including palliative interventions
- **NMPA approval in China** for ICESense3 System and disposable cryoprobes; clinical indications similar to CE approval

## **Rest of the world approvals:**

India, Thailand, Israel, Brazil, Canada, Singapore, Hong Kong, Australia, and South Africa have similar clinical indications as CE approval for ProSense®.

Russia, Taiwan, Costa Rica, and Mexico have ProSense® approvals although clinical indications vary by country.



# Breast Tumor Market Activities





# ProSense® Received FDA Marketing Authorization October 2025

## Expected to Have Positive Impact on Commercial Momentum in Global Markets

- **Potential to Set a New Standard of Care**

- First and only medical device to be granted FDA marketing authorization for the local treatment of breast cancer
- Based on landmark clinical evidence from the ICE3 Trial
- FDA Marketing authorization for the local treatment of breast cancer in patients  $\geq 70$  years of age with biologically low-risk tumors  $\leq 1.5$  cm in size and treated with adjuvant endocrine therapy, including patients not suitable for surgery
- Signifies a major advancement and enhancement to women's cancer care and quality of life

- **Post-Marketing Study (PMS) to Support Commercial Roll Out**

- FDA requested a PMS with the aim of producing additional data for the indication, will include ~400 patients at 30 sites
- PMS procedures eligible for reimbursement
- PMS sites will also be active commercially

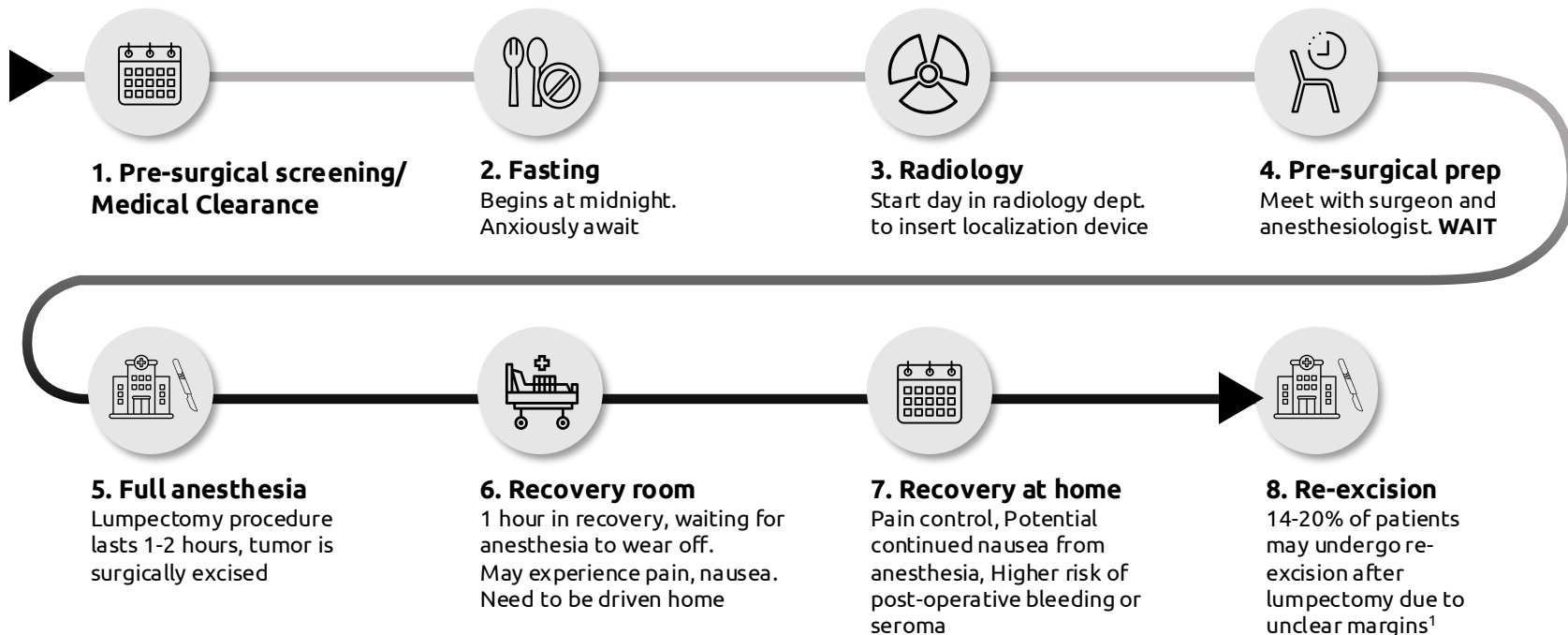
- **Economics & Reimbursement**

- CMS assigned CPT Category III\*\* at approximately \$4,049 for the facility fee alone (as of January 1, 2026)
- Additional coverage, including physician fee, is expected upon establishment of the permanent CPT Category I code

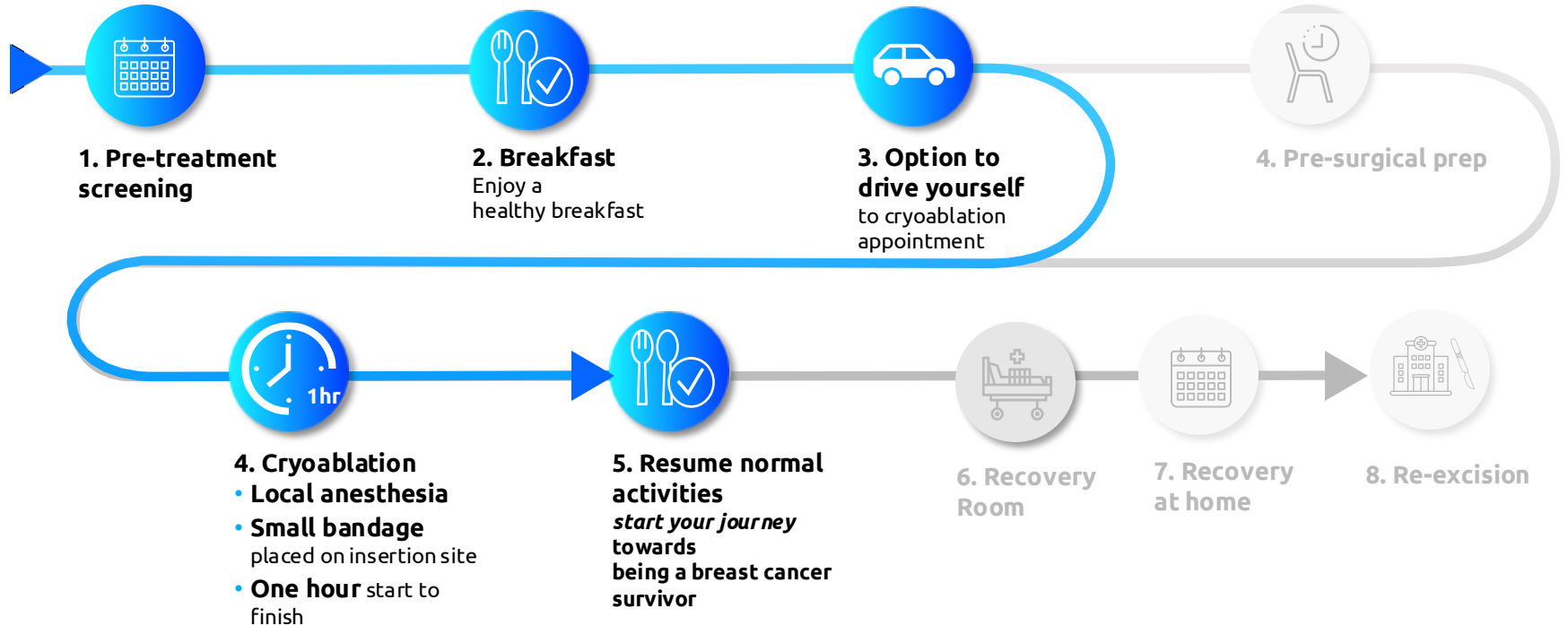
\*\*CPT or Current Procedural Terminology is a medical code used by physicians, health insurance companies and accreditation organizations for reimbursement. CPT Category I: The largest body of codes, consisting of those commonly used by providers to report their services and procedures. CPT Category III: Temporary codes used to report emerging and experimental services and procedures. Source: <https://www.aapc.com/resources/medical-coding/cpt.aspx#:~:text=CPT%20A%20Category%20I%20The%20experimental%20services%20and%20procedures,Establishment%20of%20CPT%20Category%20I%20is%20conditioned%20on%20factors%20including%20the%20Company's%20receipt%20of%20FDA%20marketing%20authorization%20of%20ProSense%20for%20breast%20cancer>



# Patient Experience: Lumpectomy



# Patient Experience: Lumpectomy vs. Cryoablation



# Cryoablation with ProSense® – Value for All



Patients

- ✓ **Minimally invasive**
- ✓ Excellent cosmetic results<sup>1</sup>
- ✓ Safe & effective with minimal pain
- ✓ Rapid Recovery<sup>2</sup>
- ✓ Preventing re-excision after lumpectomy<sup>1</sup>



Physicians

- ✓ **Increased ROI**
- ✓ Faster procedure\* = more patients
- ✓ Expands user base
- ✓ In office/ outpatient procedure
- ✓ KOLs support



Insurers

- ✓ **Lower reimbursement expense vs. surgery**
- ✓ Does not require hospitalization
- ✓ Value based care



Healthcare Systems

- ✓ **Faster, outpatient procedure**
- ✓ Excellent safety profile<sup>1</sup>
- ✓ No new infrastructure
- ✓ Environmentally & storage friendly

## Liquid nitrogen (LN2) Maximum Efficacy – Benefits Patients, Physicians, Insurers, and Healthcare Systems

<sup>1</sup> ICE3 trial; <sup>2</sup> ICE3 trial patients experienced recovery to normal activity within median 1 day (range of 0-8 days)

<sup>3</sup> <https://link.springer.com/article/10.1245/s10434-019-07247-5> ; [https://ascopubs.org/doi/abs/10.1200/JCO.2020.38.15\\_suppl.576](https://ascopubs.org/doi/abs/10.1200/JCO.2020.38.15_suppl.576)

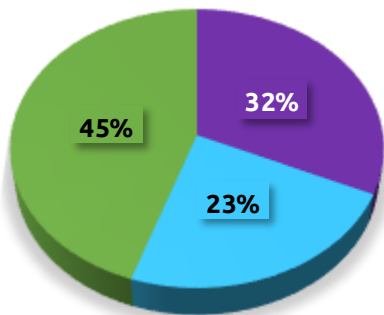
\* Compared to surgical excision; average cryoablation procedure is ~45 minutes



# U.S. Market Opportunity for Breast Cryoablation

Growing addressable patient population across benign, early-stage breast cancer, and those not-candidates for breast cancer surgery (BCS) in the U.S.

		2025	2026	2027	2028	2029	2030	2031
Breast Cancer	Early stage, HR+Her2-, ≥70 y/o, <2 cm <sup>1</sup>	46,410	47,245	48,096	48,962	49,843	50,740	51,653
	Not candidates for BCS (<2cm) <sup>2,3,*</sup>	88,561	90,332	92,139	93,982	95,861	97,779	99,734
Benign Lesions	Fibroadenoma Excision <sup>4</sup>	62,792	63,188	63,585	63,981	64,377	64,774	65,170
<b>Total</b>		<b>197,763</b>	<b>200,766</b>	<b>203,819</b>	<b>206,924</b>	<b>210,081</b>	<b>213,292</b>	<b>216,557</b>



<sup>1</sup> American Cancer Society. Breast Cancer Facts & Figures 2022-2024

<sup>2</sup> Nelson JA et al, 2022. Analysis of a Trend Reversal in US Lumpectomy Rates From 2005 Through 2017 Using 3 Nationwide Data Sets. *JAMA Surg.* 157(8):702-711. doi: [10.1001/jamasurg.2022.2065](https://doi.org/10.1001/jamasurg.2022.2065).

<sup>3</sup> Huang ML et al, 2024. Defining Breast Cryoablation Treatment Success: A Guide for the Curative and Palliative Treatment of Breast Cancer. *Academic radiology.* 31(12), 4759-4771. doi: [10.1016/j.acra.2024.07.017](https://doi.org/10.1016/j.acra.2024.07.017)

<sup>4</sup> Rath P et al. 2025. Trends, Outcomes, and Costs of Surgical Excisional Biopsy for Fibroadenoma of the Breast. *World J Surg.* 49(4):797-803. doi: [10.1002/wjcs.12542](https://doi.org/10.1002/wjcs.12542).

\* Due to patient preference/patient characteristics (e.g., comorbidities, ineligibility)/ BC characteristics (e.g., advanced stage/metastatic, multifocal/multicentric, location)/ ineligible. Patients who are unable or unwilling to undergo surgery (BCS/mastectomy), patients who are not eligible for BCS but could be offered with a more aggressive procedure that could be avoided by using cryoablation, and patients who are treated with palliative intent.

# U.S. Breast Cancer Go-To-Market Strategy

## Marketing & Distribution Ready

- Established U.S. sales team
- Strong patient and physician interest
- Engaged with leading professional medical societies of *breast surgeons and Radiologists*: ASBrS, SBI, SIO, SIR to ensure cryoablation is reflected in treatment guidelines



## Significant Barriers to Market Entry for Potential Competitors

- FDA established “special controls” to market authorization for competing cryoablation technologies for:
  - *5 years of follow-up data\**
  - *Use a liquid nitrogen-based system*
  - *Use 10-gauge cryoprobes*

\*To IceCure's knowledge, no other company is currently conducting a breast cryoablation study in the U.S.

# Breast Cancer - Terumo Japan Agreement



Exclusive strategic distribution agreement with Terumo to accelerate commercialization of ProSense® in Japan

**For >6 years ProSense® has been sold through a Private Import License - now leveraging an agreement with Terumo to expand distribution and acquire PMDA approval**



\$ 29.02 B<sup>1</sup> market cap  
\$ 6.36 B<sup>2</sup> annual revenue

**91,916 new breast cancer cases in Japan in 2022<sup>3</sup>**

- Total proceeds of \$13.2M for the initial term
  - ✓ \$ 5M for initial order and milestone-based payments
  - ✓ \$ 4M received
- Key terms:
  - ✓ Exclusive distribution of ProSense® for breast cancer in Japan for 5 years post regulatory approval in Japan
  - ✓ Responsible for Japanese regulatory and reimbursement approvals
  - ✓ Terumo is expected to submit the request for breast cancer clearance to the Pharmaceuticals and Medical Devices Agency (PMDA) by the first half of 2026

<sup>1</sup> As of June 5 2025; <https://finance.yahoo.com/quote/4543.T?guccounter=1>

<sup>2</sup> (TTM 3/31/2025); <https://finance.yahoo.com/quote/4543.T/financials/>

<sup>3</sup> [392-japan-fact-sheet.pdf](#)



# Interventional Radiology



# Interventional Radiology Applications - Global



Kidney  
Cancer



Lung  
Cancer



MSK\*  
Cancer



Liver  
Cancer

## Cases of kidney, lung, & liver cancer by region:

Europe<sup>1</sup>: 718,898

North America<sup>2\*\*</sup>: 385,538

Brazil<sup>3</sup>: 68,902

Japan<sup>4</sup>: 199,318

India<sup>5</sup>: 137,931

China<sup>6</sup>: 1,501,897

\*Musculoskeletal/bone lesions are generally not considered primary cancer and not included in many cancer statistics; in these cases, cryoablation is used to treat metastasis and provide pain palliation \*\* Includes USA & Canada



Women's  
Health

Independent clinical trials are investigating the use of cryoablation in the treatment of endometriosis, a condition that impacts 10% of women (190 million)<sup>7</sup> and 6.5 million<sup>8</sup> women in the U.S.

1 - <https://gco.iarc.who.int/media/globocan/factsheets/populations/908-europe-fact-sheet.pdf> 2 - <https://gco.iarc.who.int/media/globocan/factsheets/populations/905-northern-america-fact-sheet.pdf>  
3 - <https://gco.iarc.who.int/media/globocan/factsheets/populations/76-brazil-fact-sheet.pdf> 4 - <https://gco.iarc.who.int/media/globocan/factsheets/populations/392-japan-fact-sheet.pdf>  
5 - <https://gco.iarc.who.int/media/globocan/factsheets/populations/356-india-fact-sheet.pdf> 6 - <https://gco.iarc.who.int/media/globocan/factsheets/populations/160-china-fact-sheet.pdf>  
7 - <https://www.who.int/news-room/fact-sheets/detail/endometriosis> 8 - <https://www.womenshealth.gov/a-z-topics/endometriosis> - FDA Clearance for Gynecology



# Interventional Radiology: Expanding Product Line

Clinical data demonstrates ProSense®'s impact on various other indications



## Lung Cancer

77%-100% recurrence-free rate

### Independent Clinical Trial in Japan with ProSense®:

- No recurrence in patients with tumor size up to 1.2 cm
- 4% recurrence in patients with tumor size between 1.3 – 1.7cm
- 33% recurrence in patients with tumor size larger than 1.8 cm



## Kidney Cancer

88.7% recurrence-free rate

### IceCure's ICESECRET ProSense® Trial Interim Results:

- Highly effective for kidney tumors < 3 cm and a safe procedure for kidney tumors < 5 cm in people ineligible for surgery
- 88.7% were recurrence free at mean follow-up of period of 3.4 years

### Independent Study with ProSense®

- 92% recurrence free at mean follow-up of period of 22.2 months
- 100% secondary control rate when recurrent lesions are cryoablated



## Endometriosis

92.8% avoid secondary surgery

### ProSense® One of Two Systems Used in Independent Study:

- Efficacy rate in avoiding secondary surgery was 92.8% per patient and 93.6% per nodule treated
- Median pain-free survival rates were 93.75% at 6 months and 82.72% after 12 months, 24 months, and 36 months collectively



# IceCure's Global Reach

Available directly or through distributors in the following countries

**EMEA** – France, Germany, Italy, Spain, Poland, Romania, Hungary, Turkey, South Africa, Israel

**Asia** – China, Hong Kong, Japan, India

**LATAM** – Brazil, Costa Rica

**North America** – USA & Canada



# Business Model – Revenue Generators

**ProSense® console sales/placement  
+ consumable probe recurring revenues**

## Console related revenues

- ✓ Sales of consoles
- ✓ Consoles loaned for a minimum purchase of probes per month
- ✓ Service & maintenance – recurring revenue
- ✓ Accessories

## Probes and introducers

- ✓ Recurring Revenue



# Upcoming Milestones and Strategy

- Accelerating market traction expected in the U.S. and the rest of the world following the FDA's marketing authorization of ProSense® in early-stage breast cancer
- Terumo, IceCure's distributor in Japan, is expected to submit the request for breast cancer clearance to Japan's Pharmaceuticals and Medical Devices Agency in the first half of 2026
- Growing number of distribution partnerships to drive sales in rest of world with numerous recent regulatory approvals
- More publications expected from ongoing independent studies of ProSense® worldwide in 2026
- Next generation XSense™ Cryoablation System received FDA 510(K) clearance;
  - First XSense™ evaluation expected Q2 2026;
  - XSense™ commercialization may lead to use for new clinical indications

ProSense® gaining global recognition as the leading cryoablation system for minimally invasive procedures in a \$2.4 billion tumor ablation market



# Well-Positioned to Advance Commercialization of ProSense®

<b>Ticker</b>	<b>ICCM</b>
Share Price (12/12/25)	\$0.66
Market Cap (12/12/25)	\$48 M
Shares Outstanding (12/12/25)	73 M
Avg. Daily Trading Volume (12/12/25)	1.2 M
2024 Revenues	\$3.3 M
Cash, Cash Equivalents, and Short-Term Deposits (10/31/25) Plus \$10 M raised on August 1, 2025	\$11.8 M

Approximately 10 million warrants outstanding exercisable at \$1.00 per share

Well-positioned for commercial, development, and regulatory advancements

# Proven Leadership Team



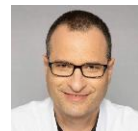
## **Ron Mayron, Chairman of the Board**

Served for 20 years in several positions at Teva including as VP – Israel & Africa & CEO of Teva Israel



## **Eyal Shamir, CEO**

Over 15 years as CEO of medical device companies (B-Cure Laser, Hanita Lenses etc.)



## **Ronen Tsimerman, CFO**

Nearly 20 years' experience as a CFO of public and private companies



## **Tlalit Bussi Tel-Tzure, VP Global Business Development & Marketing**

Over 15 years' experience in Sales, Biz Dev & Marketing in medical devices



## **Shay Levav, COO**

Over 20 years' experience in regulatory and quality assurance in the healthcare sector.



## **Merav Nir Dotan, VP Human Resources**

Over 20 years of experience in human resources and organizational management



## **Naum Muchnick, VP R&D**

Nearly 20 years of experience in medical device design, engineering, and operations, including over 13 years with GE UltraSound



## **Shad Good, VP Sales North America**

Nearly 20 years of medical device sales and leadership with experience in minimally invasive breast diagnostic and therapeutic systems

# Thank You!

Eyal Shamir, CEO

Ronen Tsimerman – CFO/COO

E: [investors@icecure-medical.com](mailto:investors@icecure-medical.com)

T: +972-4-623-0333



# Appendix

Additional Resources



# FDA Marketing Authorization Granted on Clinical Evidence from the ICE3 Trial

Largest controlled multi-location (19 prestigious U.S. institutions) clinical trial completed for LN2 cryoablation of small, low-risk breast cancer

**3.1%**  
**Local Recurrence Rate**  
For patients who received ProSense® cryoablation and received endocrine therapy<sup>1,2</sup>

**99.1%** **97%**  
**Patients Physicians**  
Very Satisfied or Satisfied with Cosmetic Outcome<sup>1,2</sup>

**Safe & Effective<sup>3</sup>**

“Cryoablation is a safe, minimally invasive ablative procedure with acceptability low 5-year same breast recurrence similar to that of lumpectomy for similar patient populations, with the benefit of being an office-based, non surgical treatment. Further study within a clinical trial or registry is needed to confirm cryoablation as a viable alternative to surgical excision in the appropriately selected patients.”

- Richard Fine, MD, FACS – Breast Surgeon, West Clinical, ICE3 Investigator & Author of the ICE3 Trial Publication

## Independent Studies Confirm ICE3 Results

<sup>1</sup> Fine RE, Gilmore RC, Tomkovich KR, et al. Cryoablation Without Excision for Early-Stage Breast Cancer: ICE3 Trial 5-Year Follow-Up on Ipsilateral Breast Tumor Recurrence. *Ann Surg Oncol*. 2024;31(11):7273-7283. doi:10.1245/s10434-024-16181-02

<sup>2</sup> Ipsilateral breast tumor recurrence rate (IBTR) of 3.2% (4/124) in the subset of patients who underwent cryoablation and endocrine therapy only.

<sup>3</sup> 5-year study results assessed safety & efficacy for ProSense Cryoablation in the treatment of low-risk, early-stage breast cancer for women aged 70 and above with adjuvant endocrine therapy

# Independent Studies Confirm ICE3 Results

**100%**  
Free from  
local recurrence

## In women with early-stage breast cancer<sup>(1)</sup>

Study conducted by Principal Investigator Hisanori Kawamoto, of Breast and Imaging Center, St. Marianna University School of Medicine, Kawasaki-Shi, Japan—published in “Breast Cancer” Journal

**93.4-96.8%**  
Tumor  
reduction rate

## In women deemed inoperable for breast cancer<sup>(2)</sup>

Study conducted by Principal Investigator Dr. F. Di Naro, of Azienda Ospedaliero-Universitaria Careggi, Diagnostic Senology Unit, Florence, Italy—presented at European Society of Breast Imaging Annual Scientific Meeting 2023

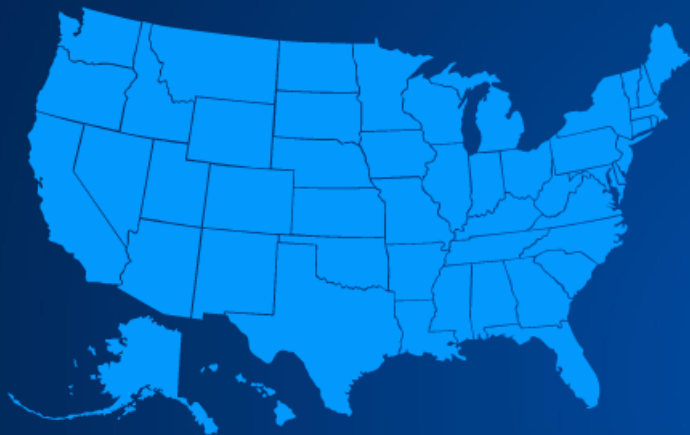
**96.8%**  
Success  
rate

## In women with early-stage breast cancer who declined surgery<sup>(3)</sup>

Study conducted by Principal Investigator Lucía Graña-López, MD, PhD, a radiologist who specializes in breast and women's imaging, Head of the Breast Unit at University Hospital Lucus Augusti, Spain—presented at European Society of Breast Imaging Annual Scientific Meeting 2023

1. <https://pubmed.ncbi.nlm.nih.gov/38678120/>
2. <https://ir.icecure-medical.com/news-events/press-releases/detail/98/women-deemed-inoperable-for-breast-cancer-benefitted-from-icecure-medicals-prosense-as-an-independent-study-performed-in-italy-showed-a-tumor-reduction-rate-of-93-43-to-96-81>
3. <https://ir.icecure-medical.com/news-events/press-releases/detail/97/independent-study-validates-icecures-prosense-cryoablation-is-safe-effective-outpatient-procedure-for-breast-cancer-with-96-8-success-rate>

# Interventional Radiology – U.S. Strategy



## FDA Approvals

- ✓ General minimally-invasive cryoablation applications
- ✓ Kidney cancer
- ✓ Liver cancer

## Reimbursement

- ✓ CPT I<sup>1</sup> approval and coverage for cryoablation of kidney, liver, lung & bone
- ✓ CPT II<sup>1</sup> approval and coverage for cryoablation of bone cancer



**42K**

Liver cancer patients<sup>2</sup>



**82K**

Kidney cancer patients<sup>3</sup>

<sup>1</sup> CPT or Current Procedure Terminology is a medical code used by physicians, health insurance companies and accreditation organizations. CPT Category I: The largest body of codes, consisting of those commonly used by providers to report their services and procedures. CPT Category II: Supplemental tracking codes used for performance management. Source: <https://www.aapc.com/resources/medical-coding/cpt.aspx#:~:text=CPT%20Category%20I%3A%20The, and%20experimental%20services%20and%20procedures>

<sup>2</sup> American Cancer Society - <https://www.cancer.org/cancer/types/liver-cancer/about/what-is-key-statistics.html>

<sup>3</sup> American Cancer Society - <https://www.cancer.org/cancer/types/kidney-cancer/about/key-statistics.html> - 2024 numbers

# ICE Secret Clinical Trial – Bnai Zion Medical Center, Israel

Cryoablation for patients with small renal masses (SRM) who cannot be offered kidney preserving surgery

**111**

Patients

Mean Follow Up  
36 months

**117**

Lesions

**88.7%**

Recurrence-Free Rate

**ProSense® cryoablation is highly effective for kidney tumors < 3 cm and a safe procedure for kidney tumors < 5 cm in people ineligible for surgery**

1. Shprits S et al. Poster presentation European Urology Association (EUA), 2019. Safety, feasibility and oncologic efficacy of treatment for small renal masses using an innovative liquid nitrogen-based cryogenic device
2. [ICESECRET study interim Press Release – March 24, 2025](#)

# List of publications – Breast Cancer

#	Publication Title	Country
1	<a href="#">Wooldrik, S et al 2025 Cosmetic outcome and patient satisfaction following percutaneous thermal ablation of early-stage breast cancer; results of an open label randomized phase 2 trial</a>	Netherlands
2	<a href="#">Wooldrik, S et al 2025 Percutaneous Thermal Ablation for Early-Stage Breast Cancer: An Open-Label, Randomized, Phase II Trial to Select the Preferred Technique for Evaluating Thermal Ablation as a Surgical Alternative</a>	Netherlands
3	<a href="#">Matsumoto K et al 2025 Post-treatment patient satisfaction in early-stage breast cancer: comparison of cryoablation versus breast conservation therapy using BREAST-Q</a>	Japan
4	<a href="#">Matsumoto K et al 2024 CA as the primary treatment in a HER2 positive Stage IV BC patient -5 years term FU case report</a>	Japan
5	<a href="#">Fine et al 2024 Cryoablation Without Excision for Early-Stage Breast Cancer: ICE3 Trial 5-Year Follow-Up on Ipsilateral Breast Tumor Recurrence</a>	USA
6	<a href="#">Graña-López et al 2024 Acceptance and results of cryoablation for the treatment of early breast cancer in non-surgical patients</a>	Spain
7	<a href="#">Oueidat K et al 2024 CA of Primary Breast Cancer in Patients Ineligible for Clinical Trials-A Multi-institutional Study</a>	USA
8	<a href="#">Vogl et al 2024 CT-Guided Percutaneous Cryoablation of Breast Cancer</a>	Germany
9	<a href="#">Kawamoto H et al 2024 Percutaneous US guided Cryoablation for early-stage Breast Cancer</a>	Japan
10	<a href="#">Kwong A, Co M, Fukuma E. 2023 Prospective Clinical Trial on Expanding Indications for Cryosurgery for Early Breast Cancers</a>	Hong Kong/ Japan
11	<a href="#">Khan et al. 2023 Cryoablation Allows the Ultimate De-escalation of Surgical Therapy for Select Breast Cancer Patients</a>	USA



# List of publications – Breast Cancer

#	Publication Title	Country
12	<a href="#">Graña-López L et al 2022 Cryoablation of breast lesions: our experience</a>	Spain
13	<a href="#">van de Voort et al 2021 Thermal Ablation-Alternative for Surgical Resection of Small (= or smaller 2 cm) BC- A Meta-Analysis</a>	Netherlands
14	<a href="#">Fine et al 2021- Cryoablation Without Excision- 3-Year Interim ICE3 Trial</a>	USA
15	<a href="#">Kawamoto et al 2021- VAB +MRI Following Cryoablation for Primary Early-Stage Breast Cancer- Pilot Study</a>	Japan
16	<a href="#">Adaci et al 2020- Fluorodeoxyglucose positron emission tomography findings after Cryoablation of early Breast Cancer</a>	Japan
17	<a href="#">Machida 2019- MRI Findings After Cryoablation of Primary Breast Cancer Without Surgical Resection</a>	Japan



# List of publications – Fibroadenoma

#	Publication Title	Country
1	<a href="#">de Bustamante Durbán et al 2024 Cryoablation- Our experience as an alternative to surgery for fibroadenoma</a>	Spain
2	<a href="#">Graña-López L et al 2022 Cryoablation of breast lesions - our experience</a>	Spain
3	<a href="#">Sheth M et al 2019- With Cryoablation Therapy for Fibroadenomas Molecular Science and Post-Therapy Imaging Follow UP</a>	USA
4	<a href="#">Golatta et al 2015- Ultrasound-guided Cryoablation of breast fibroadenoma_ a pilot trial</a>	Germany
5	<a href="#">Hahn et al 2013 – Ultrasound Guided Cryoablation of Fibroadenoma</a>	Czech Republic / Germany

# List of publications – Interventional Radiology

Indication	Publication Title	Country
Kidney	<a href="#">Aurilio G et al- 2023 Image-Guided Ablations in Patients with Recurrent Renal Cell Carcinoma</a>	Italy
	<a href="#">Moulin et al 2023 Single-Probe Percutaneous Cryoablation with Liquid Nitrogen</a>	France
	<a href="#">Shin et al 2019 Apoptotic cell clearance in the tumor microenvironment_ a potential cancer therapeutic target</a>	Korea
	<a href="#">Shprits et al 2019 Cryoablation-for-recurrent-renal-tumors</a>	Israel
Lung	<a href="#">Nomori H et al 2025 Long-term outcomes of combination therapy with stereotactic body radiation therapy plus cryoablation using liquid nitrogen for stage I non-small cell lung cancer with tumors ≥2 cm</a>	
	<a href="#">Nomori H et al 2022- Cryoablation Using Liquid Nitrogen for Metastatic Lung</a>	Japan
	<a href="#">Nomori H et al 2020- Cryoablation for T1N0M0 non-small cell lung cancer using liquid nitrogen. European Journal of Radiology</a>	Japan
	<a href="#">Berte et al 2017- A new cryoenergy for ventricular tachycardia ablation- a proof-of-concept study</a>	France
	<a href="#">Nomori H et al 2017 The cryoablation of lung tissue using liquid nitrogen in gel and in the ex vivo pig lung</a>	Japan
Liver	<a href="#">Hübner et al. - 2020 - Evaluation of the thermal sensitivity of <b>porcine liver</b> in CT-guided cryoablation an initial study-annotated</a>	Germany
Multiple Indications	<a href="#">Orsi et al 2024 Liquid nitrogen-based cryoablation: complication rates for lung, bone, and soft tissue tumors cryoablation</a>	Italy
	<a href="#">Geevarghese R, et al 2024 Interventional Oncology-2024 Update</a>	USA
	<a href="#">Kammoun T et all 2022 Feasibility and Safety of Single-Probe Cryoablation with Liquid Nitrogen</a>	France



# List of publications – Interventional Radiology

Indication	Publication Title	Country
Endometriosis	<a href="#">Najdawi M et al Cornelis FH 2023 Pain-Free Survival after Percutaneous Image-Guided Cryoablation of Extraperitoneal Endometriosis</a>	France, USA
	<a href="#">Touimi Benjelloun, et al (2025). Efficacy and Safety of Personalized Percutaneous Single-Probe Cryoablation Using Liquid Nitrogen in the Treatment of Abdominal Wall Endometriosis.</a>	France
Cryoimmunology	<a href="#">Alshebremi M et al 2023 Functional tumor cell-intrinsic STING drives antitumor immunity and therapy efficacy following Cryoablation</a>	USA