

Leveraging From A Strong Platform To Deliver Growth

Investor Presentation

June 2019



VAALCO ENERGY, INC.

Safe Harbor Statement

This document includes "forward-looking statements" within the meaning of Section 27A of the Securities Act of 1933, as amended, and Section 21E of the Securities Exchange Act of 1934, as amended. All statements, other than statements of historical facts, included in this document that address activities, events, plans, expectations, objectives or developments that VAALCO expects, believes or anticipates will or may occur in the future are forward-looking statements. These statements may include amounts due in connection with the Company's withdrawal from Angola, expected sources of future capital funding and future liquidity, future operating losses, future changes in oil and natural gas prices, future strategic alternatives, capital expenditures, future drilling plans, prospect evaluations, negotiations with governments and third parties, timing of the settlement of Gabon income taxes, expectations regarding processing facilities, production, sales and financial projections, reserve growth, other issues related to our exit from Angola, and purchases by the Company of its common stock pursuant to any Rule 10b5-1 trading plans. These statements are based on assumptions made by VAALCO based on its experience and perception of historical trends, current conditions, expected future developments and other factors it believes are appropriate in the circumstances. Such statements are subject to a number of assumptions, risks and uncertainties, many of which are beyond VAALCO's control. These risks include, but are not limited to, oil and gas price volatility, inflation, general economic conditions, the Company's success in discovering, developing and producing reserves, production and sales differences due to timing of liftings, decisions by future lenders, the risks associated with liquidity, the risk that our negotiations with the government of the Republic of Angola will be unsuccessful, lack of availability of goods, services and capital, environmental risks, drilling risks, foreign regulatory and operational risks, and regulatory changes. These and other risks are further described in VAALCO's annual report on Form 10-K for the year ended December 31, 2018, quarterly reports on Form 10-Q and other reports filed with the SEC which can be reviewed at <http://www.sec.gov>, or which can be received by contacting VAALCO at 9800 Richmond Avenue, Suite 700, Houston, Texas 77042, (713) 623-0801. Investors are cautioned that forward-looking statements are not guarantees of future performance and that actual results or developments may differ materially from those projected in the forward-looking statements. VAALCO disclaims any intention or obligation to update or revise any forward-looking statements, whether as a result of new information, future events, or otherwise.

The SEC generally permits oil and natural gas companies, in filings made with the SEC, to disclose proved reserves, which are reserve estimates that geological and engineering data demonstrate with reasonable certainty to be recoverable in future years from known reservoirs under existing economic and operating conditions. In this press release and the conference call, the Company may use the terms "resource potential" and "oil in place", which the SEC guidelines restrict from being included in filings with the SEC without strict compliance with SEC definitions. These terms refer to the Company's internal estimates of unbooked hydrocarbon quantities that may be potentially added to proved reserves. Unbooked resource potential and oil in place do not constitute reserves within the meaning of the Society of Petroleum Engineer's Petroleum Resource Management System or SEC rules and do not include any proved reserves. Actual quantities of reserves that may be ultimately recovered from the Company's interests may differ substantially from those presented herein. Factors affecting ultimate recovery include the scope of the Company's ongoing drilling program, which will be directly affected by the availability of capital, decreases in oil and natural gas prices, drilling and production costs, availability of drilling services and equipment, drilling results, lease expirations, transportation constraints, processing costs, regulatory approvals, negative revisions to reserve estimates and other factors as well as actual drilling results, including geological and mechanical factors affecting recovery rates. Estimates of unproved reserves may change significantly as development of the Company's assets provides additional data. In addition, our production forecasts and expectations for future periods are dependent upon many assumptions, including estimates of production decline rates from existing wells and the undertaking and outcome of future drilling activity, which may be affected by significant commodity price declines or drilling cost increases.

Corporate Overview



VAALCO ENERGY, INC.

Why VAALCO Now?

Leveraging From a Strong Platform to Deliver Growth

Established operator with a proven track record in Africa

Strong management team with extensive industry experience

Solid financial footing with no debt and ample working capital

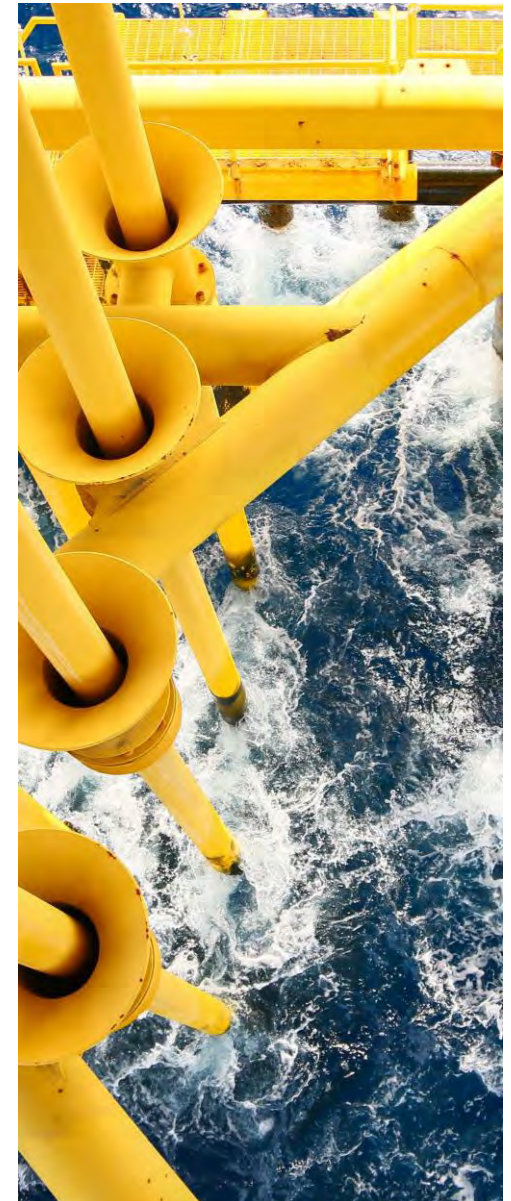
Profitable free cash flow from low risk reserve base

Material upside from existing Etame field

Fully funded active work program providing multiple catalysts

Solid foundation to pursue opportunistic inorganic growth

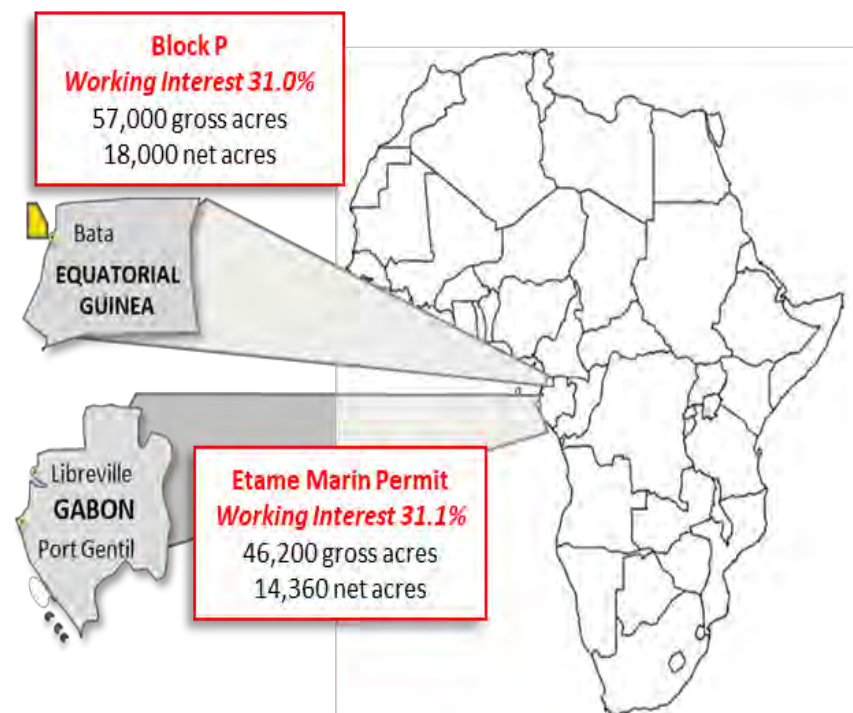
Focused on Delivering Long-Term, Sustainable Growth



20+ Year Track Record

Experienced Operator Entering an Ambitious Growth Phase

- International E&P focused on low-risk, producing assets in Africa
- Operator of Gabon offshore Etame license
- Produced ~110 million gross barrels of oil to date
- Reserves and resources of ~126 million gross barrels of oil at Etame
- Active work program in 2019/20 to grow production and reserves
- Significant potential in Equatorial Guinea, development and exploration
- Actively pursuing M&A opportunities within strategic focus areas



	Gross	WI ⁽¹⁾	Net ⁽²⁾
2P Reserves, MMBO	36.0	11.2	9.7
Production ⁽³⁾ , BOPD	12,939	4,018	3,496

1) 31.1% WI

2) Net Volumes are After 13% Royalty Deduction

3) Q1'19 production

Management Team

Deep Industry, Technical and Financial Experience



Cary Bounds – Chief Executive Officer and Director

Joined VAALCO in 2015 as COO and was named CEO in December 2016. Mr. Bounds began his career at Conoco in 1991. Most recently led Noble's Central Africa BU, overseeing operations in Equatorial Guinea. Held technical and leadership positions with Noble Energy, SM Energy, Dominion, and ConocoPhillips. Fifteen years domestic experience and ten years international experience, primarily West Africa and UK. Holds B.S. in Petroleum Engineering from Texas A&M University.



Elizabeth Prochnow – Chief Financial Officer

Joined VAALCO in 2015. Over thirty years serving in senior level accounting and financial officer roles with publicly traded companies. Holds a Bachelor of Arts and a Masters of Accounting from Rice University and is a CPA accountant in the State of Texas.



David DesAutels – Executive Vice President Corporate Development

Joined VAALCO in 2017. Over forty years of domestic & international experience in oil and gas development and exploration. Held technical and leadership positions with Noble Energy and Occidental. Holds a M.S. in Geology from University of Minnesota-Twin Cities.



Thor Pruckl – Executive Vice President International Operations

Joined VAALCO in 2019. Over thirty years of domestic & international experience in both upstream and midstream operations and is well versed in both onshore and offshore operations. Held technical and leadership positions with Noble Energy, Talisman Energy, Nexen Energy and BP Resources Canada. Holds an undergraduate degree from the University of Saskatchewan and a Master's from Royal Roads University, UK.



Michael Silver – Executive Vice President and General Counsel

Joined VAALCO in 2018. Mr. Silver has over 25+ years of experience as in-house counsel with ExxonMobil and BHP Billiton supporting international petroleum operations. Areas of experience includes M&A, negotiations, compliance and dispute resolution. Holds a J.D. from the Duke University School of Law, an M.B.A. from the Fuqua School of Business and a B.A. in International Affairs from Lafayette College.

Delivering Value Through Execution

Turnaround by Management Team

- Management team adopted new strategy in 2017
- Delivered on objectives to position the Company for sustainable growth
- Initiated Vision 2025 to achieve material increase in scale

New Management Objectives		Delivered to Date
Negotiate long-term license extension at Etame	▶	Extended PSC to 9/2028, with two 5-year options
Restore production and grow reserves	▶	Completed Avouma workover program Increased reserves 80% from 2017 to 2018
Strengthen financial position	▶	Reduced debt from \$15 MM to zero Self funding 2019/20 Etame drilling program
Rationalize portfolio	▶	Angola – Negotiated exit at reasonable terms US – Completed sale of US properties
Pursue near/long term growth	▶	Plans in place for 2019/2020 drilling program New ventures team actively pursuing M&A

Vision 2025 Strategy



VAALCO ENERGY, INC.

Vision 2025

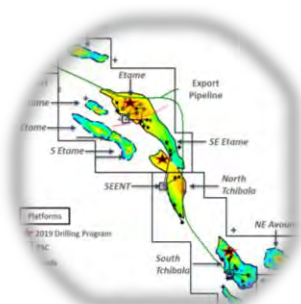
Roadmap to Transformational Growth

- Achieve material increase in scale as a premier Africa operator
- Maintain operational excellence, cost discipline and strong balance sheet
- Execute work programs at Etame to grow production and reserves
- Pursue value accretive M&A opportunities within strategic focus
- Targeting 5x growth in value by 2025 and top quartile TSR



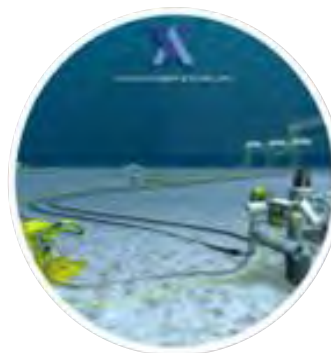
Vision 2025

Building Blocks to Achieve Growth



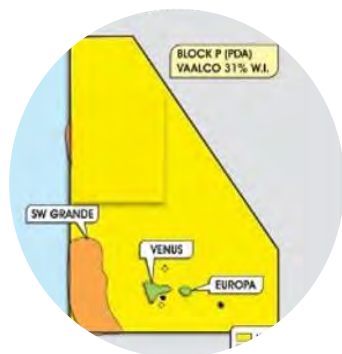
2019/20 Etame License Work Program

- One Etame Field development well
- One development well to extend the South Tchibala Field
- One Gamba appraisal wellbore to extend the SE Etame Field
- One Dentale appraisal wellbore to evaluate sub crop reservoirs



Future Etame License Work Programs

- Five Gamba development wells
- Five Gamba near field leads/prospects
- Nine Dentale development wells and one Dentale workover
- Crude Sweetening Project



Equatorial Guinea – Block P

- 20+ million BOE gross resource discovery with 31% W.I as operator
- SW Grande prospect with potential for 60+ million BOE gross resource
- Multiple Miocene and Cretaceous prospects with significant reserves



New Ventures and M&A

- Acquisition of producing assets with upside potential
- Pursuing accretive merger candidates with synergies to create scale
- Multiple direct negotiations and bid round opportunities in progress

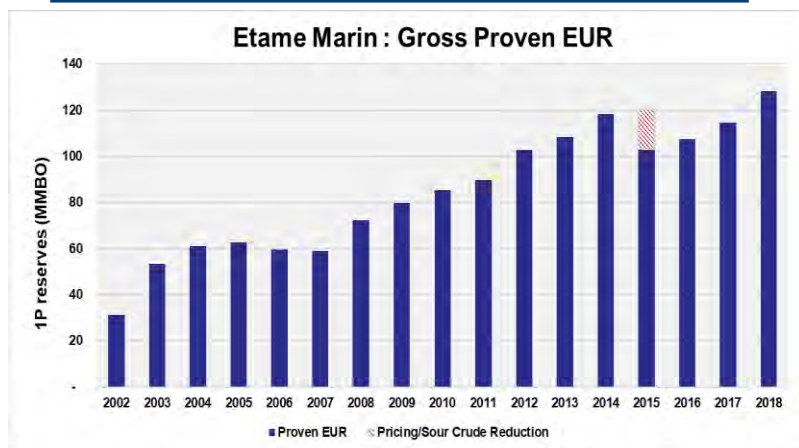
Operational Outlook



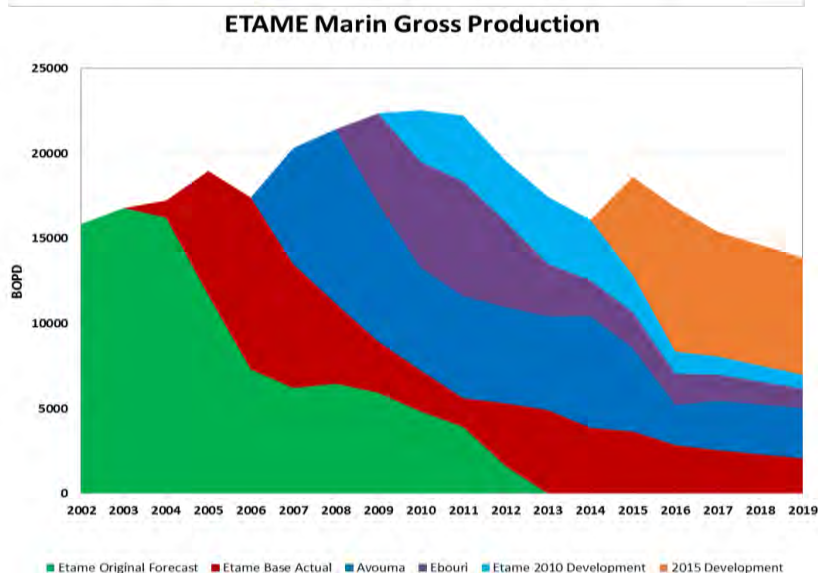
VAALCO ENERGY, INC.

Etame Track Record of Success

Repeatedly Creating Value



- World class Gamba reservoir plus deeper Dentale resource potential
- 30 MMBO initial gross proved EUR at YE 2002
- >110 MMBO gross barrels of oil produced
- 126 MMBO gross proved EUR at YE 2018
- Six successful drilling programs over 20 years
- Two additional platforms installed in 2014
- Six development wells drilled in 2015
- Infrastructure in place for continued development



A World Class Asset With Material Upside Potential

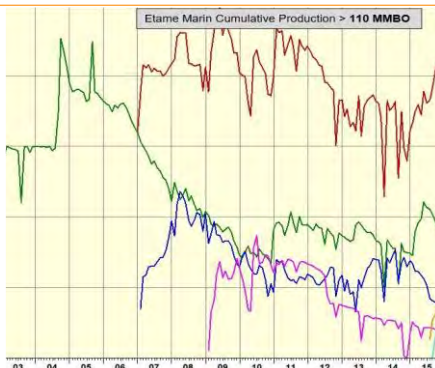
Gross Reserves and Resources

Producing Wells

110 MMBO produced to date

12.5 MMMBO proven reserves

7.7 MMBO probable reserves

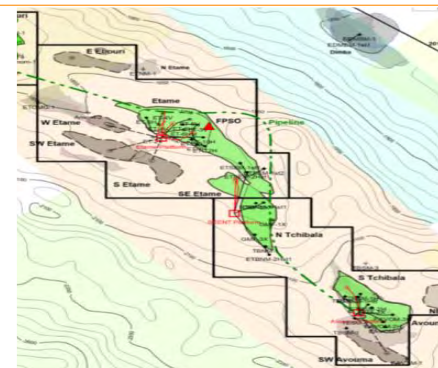


Undeveloped Reserves

2019/20 Gamba

Drilling: 11.7 MMBO 2P

Future Gamba Drilling:
4.1 MMBO probable
undeveloped reserves
in one well

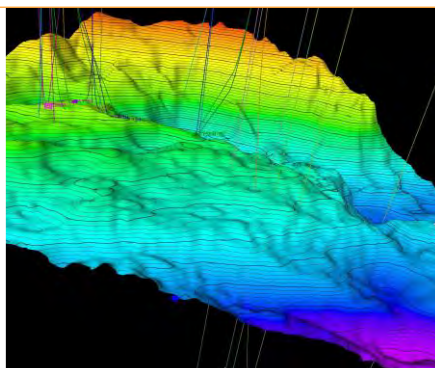


Contingent Resources

Future Dentale Drilling: 4.4 MMBO

Crude Sweetening: 5.3
MMBO

2028 License Extension:
15.9 MMBO



Prospective Resources

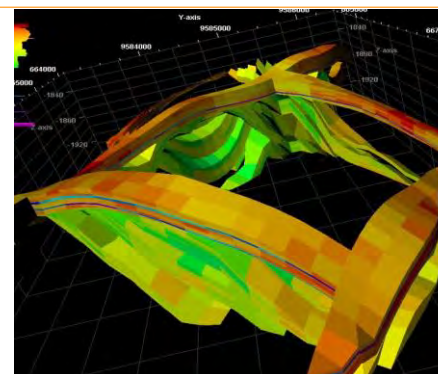
2019/20 Gamba

Drilling: 4.2 MMBO

Future Gamba Drilling:
29.7 MMBO

Future Dentale Drilling:
18.2 MMBO

Crude Sweetening: 12.2
MMBO



Accelerating Growth, Increasing Reserves, Reducing Cost Per Barrel

Fully Funded 2019/20 Work Program

Meaningful Growth with Moderate Risk

2019/20 Drilling Objectives

Etame Field Development: Etame 9H Gamba well between the two highest gross producing wells in Etame

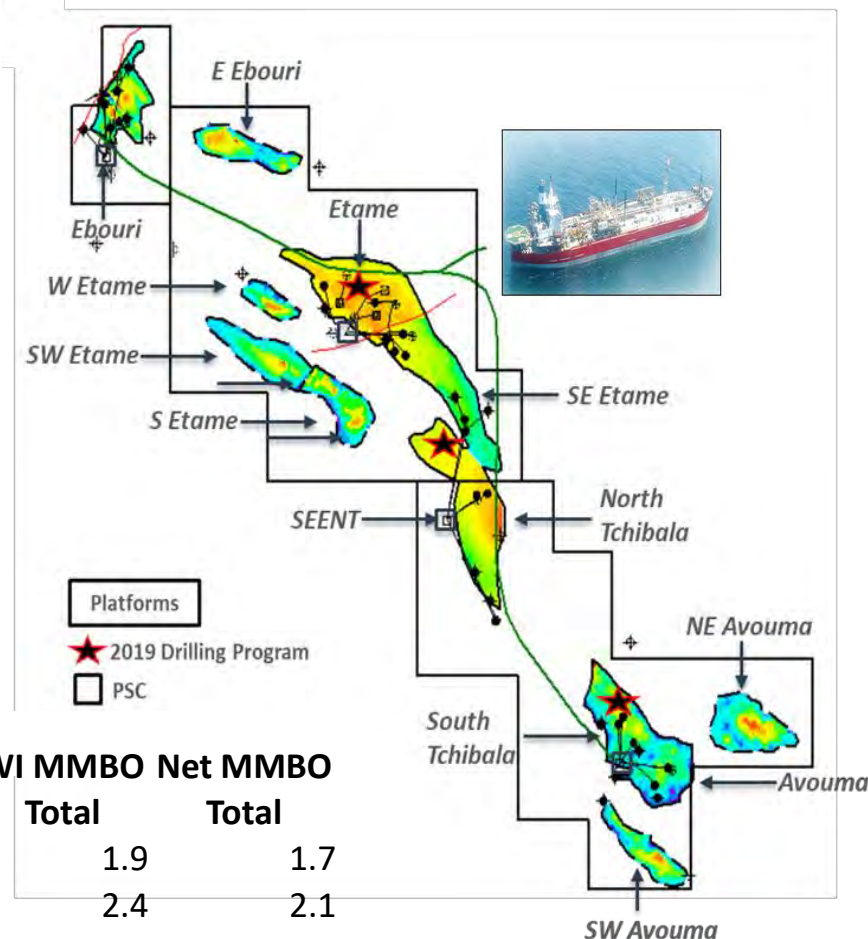
South Tchibala Extension: South Tchibala 3H Gamba well and proves up a future development location

SE Etame Extension: SE Etame 4P/4H Gamba well and proves up two future development locations

Etame Dentale Sub Crop: Etame 9P appraisal wellbore proves up three Dentale sub crop development locations

Potential production uplift from 3 wells in 2019/20:

9,000 – 12,000 BOPD gross/ 2,450 – 3,250 BOPD net



2019/2020 Program	Gross MMBO			WI MMBO Net MMBO	
	2P Undeveloped	Prospective	Total	Total	Total
Etame Field Development	6.2	0.0	6.2	1.9	1.7
South Tchibala Extension	5.5	2.1	7.7	2.4	2.1
SE Etame Extension ⁽¹⁾	0.0	10.2	10.2	3.2	2.8
Dentale Sub Crop	0.0	4.6	4.6	1.4	1.2
Total	11.7	16.9	28.6	8.9	7.7

Remaining Etame Opportunities

Moderate Risk Growth

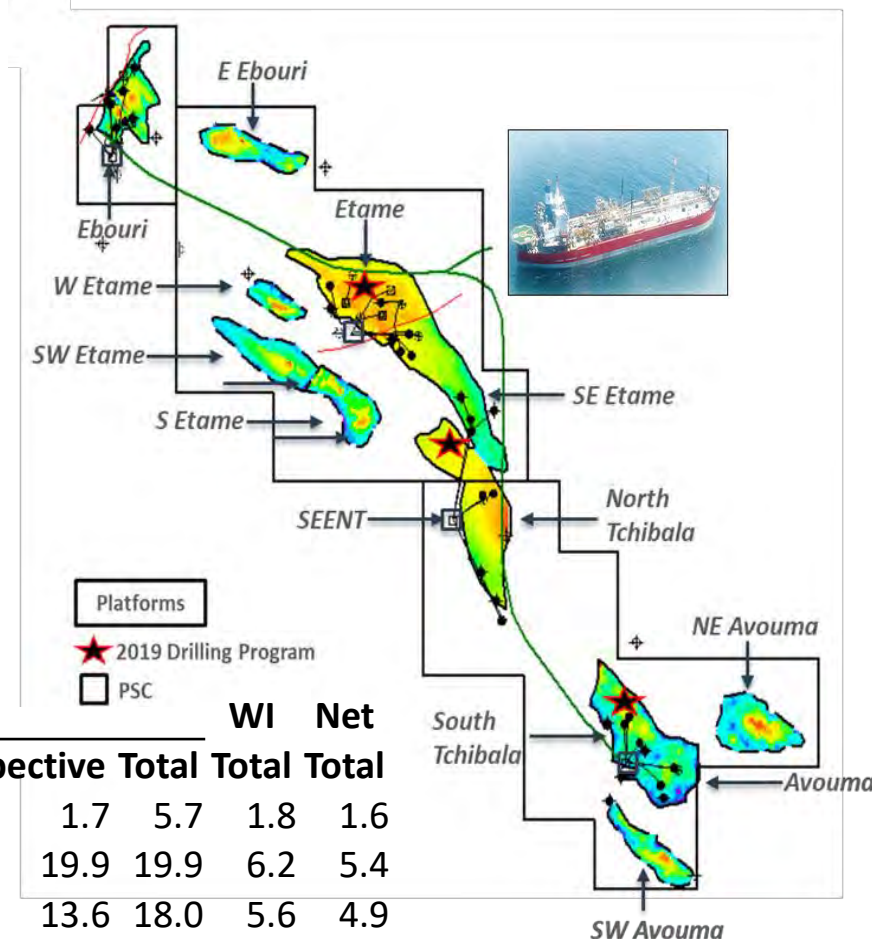
Gamba Development: One Gamba well in the Etame field

Gamba Leads/Prospects: Five potential satellite prospects identified

Dental Development: One workover and nine development wells

Crude Sweetening Project: Reactivation of three shut in wells, drilling a development well and testing a satellite prospect

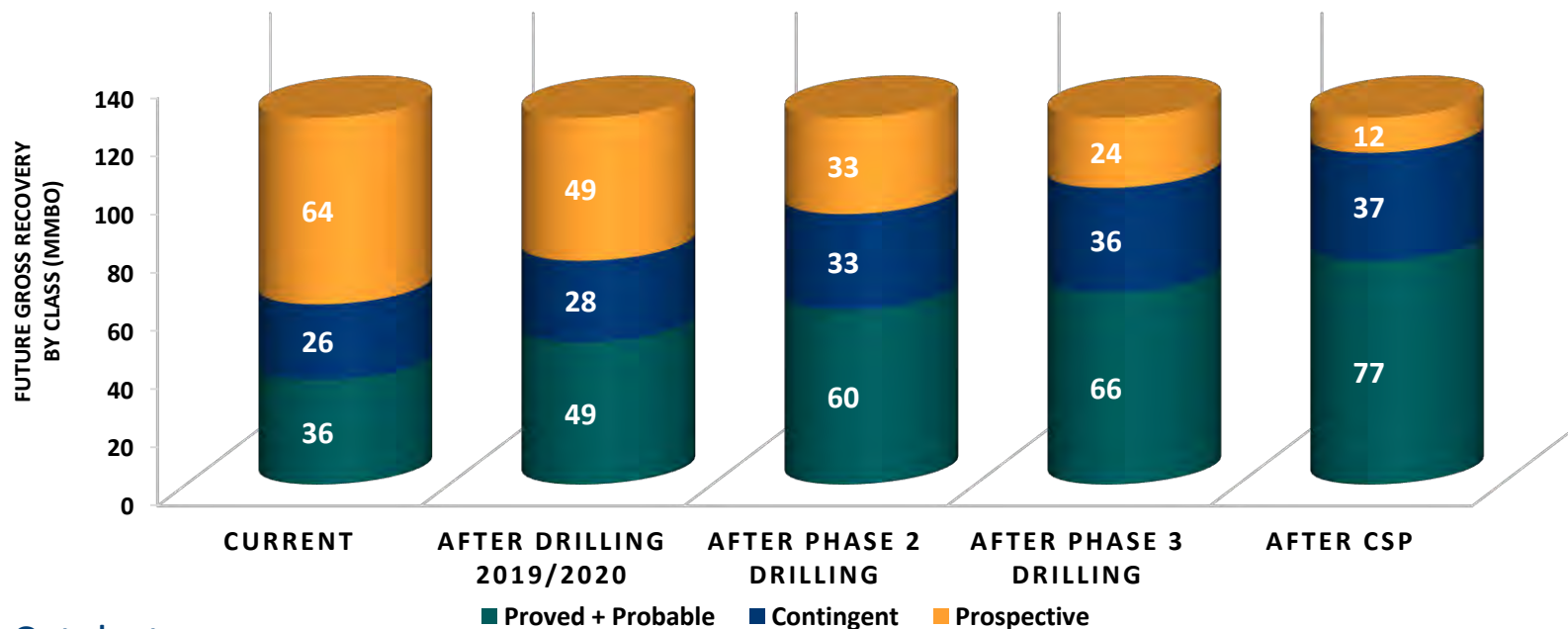
License Extension beyond 2028: Options to extend Etame license up to 2038 and convert resources to reserves



Remaining Opportunities	Gross MMBO		WI		Net	
	2P Undeveloped	Contingent Prospective Total	Total	Total	Total	Total
Gamba Development Wells	4.1	0.0	1.7	5.7	1.8	1.6
Gamba Prospects	0.0	0.0	19.9	19.9	6.2	5.4
Dentale Development Wells	0.0	4.4	13.6	18.0	5.6	4.9
Crude Sweetening Project	0.0	5.3	12.2	17.5	5.4	4.7
2028 License Extension	0.0	15.9	0.0	15.9	4.9	4.3
Total	4.1	25.6	47.4	77.0	23.9	20.8

Material Upside

Converting Contingent and Prospective to 2P

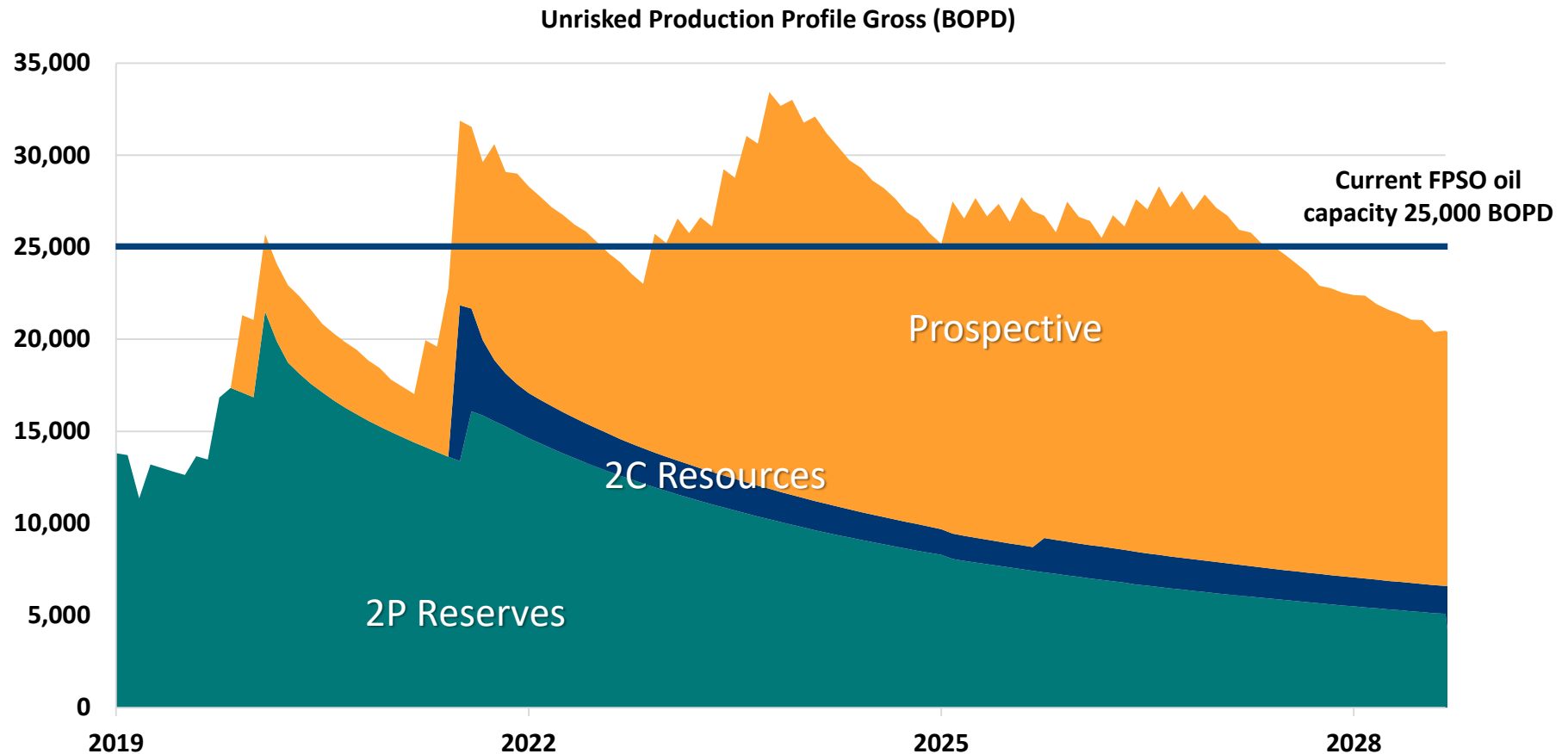


Catalysts

- Two appraisal wells in 2019/20 de-risk Dentale sub-crop and SE Etame Gamba extension, S. Tchibala development well de-risks one additional Gamba development location
- One Phase 2 appraisal well de-risks Deep Dentale and two satellite prospects are tested in Phase 2
- Three satellite prospects are tested in Phase 3
- CSP includes reactivating three shut in wells, drilling a development well and testing a satellite prospect

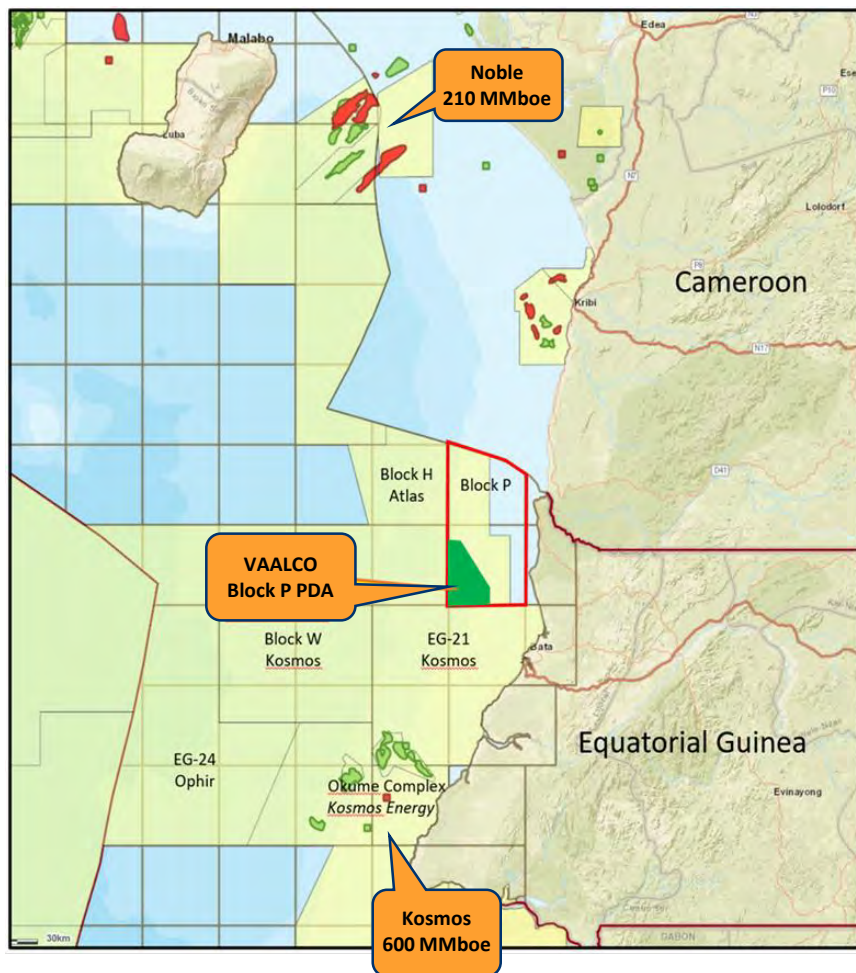
Profitable Production Growth

Well Defined and Repeatable Organic Growth



Equatorial Guinea

Significant Upside Potential



- 20+ million BOE gross resource discovery with 31% W.I as operator
- Block P suspension lifted; awaiting approval of transfer of GEPetrol's WI
- VAALCO will seek partner on a promoted basis to drill exploratory well required under terms to lift suspension
- If VAALCO does not proceed forward, \$10 million of leasehold costs will be impaired
- Timing, costs, development plan and terms are being re-evaluated
- Reviewing exploration opportunity in SW Grande with potential for 60+ million BOE gross resource
- Block P surrounded by Miocene to Cretaceous reservoirs with significant reserves

Significant Medium to Long-Term Upside Potential

Inorganic Growth

Achieving 5x Value

- Seeking to complement organic growth with value accretive M&A opportunities
- Strategic focus on producing assets in Africa
- Seeking merger candidates of similar size and similar corporate strategy
- Screening acquisition opportunities that create value through technical and operational synergies
- LSE dual-list to provide access to additional sources of capital to fund inorganic growth objectives



Stakeholder Engagement



VAALCO ENERGY, INC.

Corporate Social Responsibility

Partnering with the Communities Where We Operate

Underpinning growth is maintaining our social license to operate

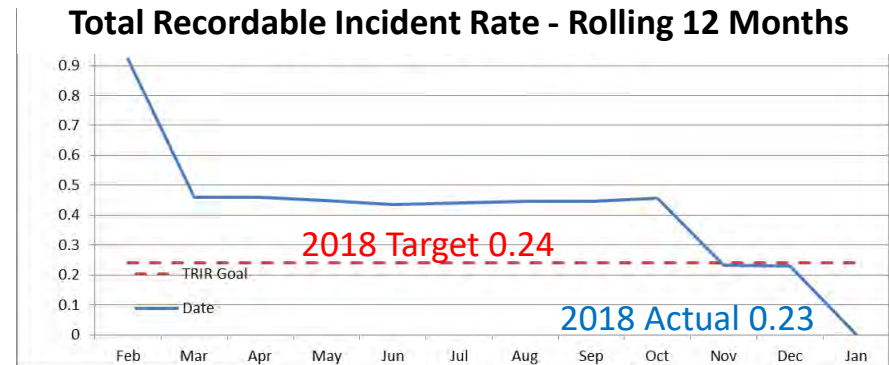
- Strong governmental relationships
 - Technical, Commercial and Policy
 - Builds ease of access to joint collaboration
- Extensive community investment
 - Education: school supplies, training, facility upgrades
 - Social and health development campaigns that support the improvement in quality of life
 - Funding projects to prevent child trafficking
 - Surgical equipment and medicine for hospitals
 - Local civil works construction projects
 - 92% Gabonese staff



HSE and Governance

Our Commitment to Society

- Health and safety record – over 1.1 million hours with no recordable incident through June 2019
- Strong government relationship and involvement in programs
- HSE activities and achievements reviewed bi-annually with government
- Long standing governance practices designed in conformance with SEC and NYSE requirements
- Majority independent Board oversight
- Code of conduct, code of ethics, employee education and monitoring for compliance with U.S. FCPA laws



Financial Overview



VAALCO ENERGY, INC.

Financial Snapshot⁽¹⁾

Delivering Strong Cash Flow and Income

US \$35.0 MM

Adjusted Net Income

248%

FY 2018

US \$56.2 MM

Adjusted EBITDAX

97%

FY 2018

US \$37.2 MM

Cash from Operations

315%

FY 2018

US\$25.04

Production cost per BO⁽²⁾

1%

FY 2018

US \$104.9 MM

Revenues

36%

FY 2018

3,751 BOPD

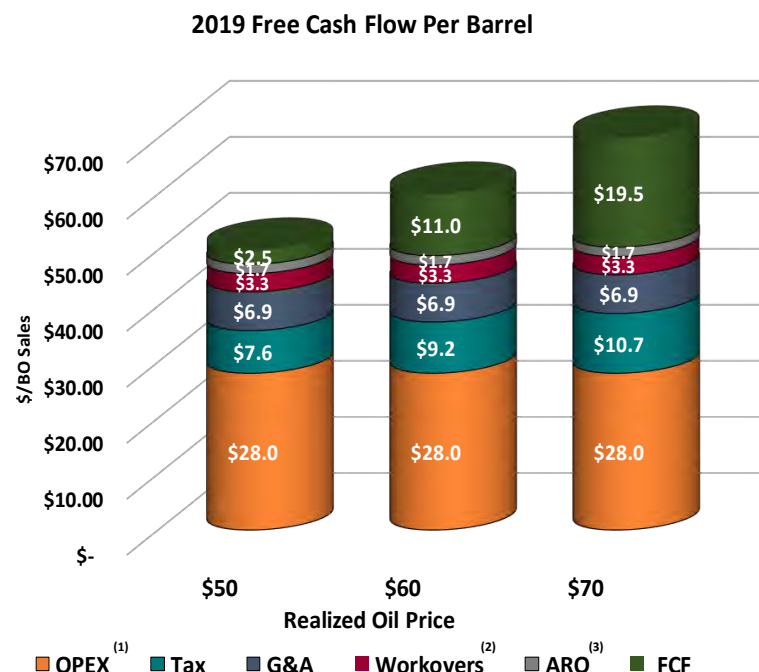
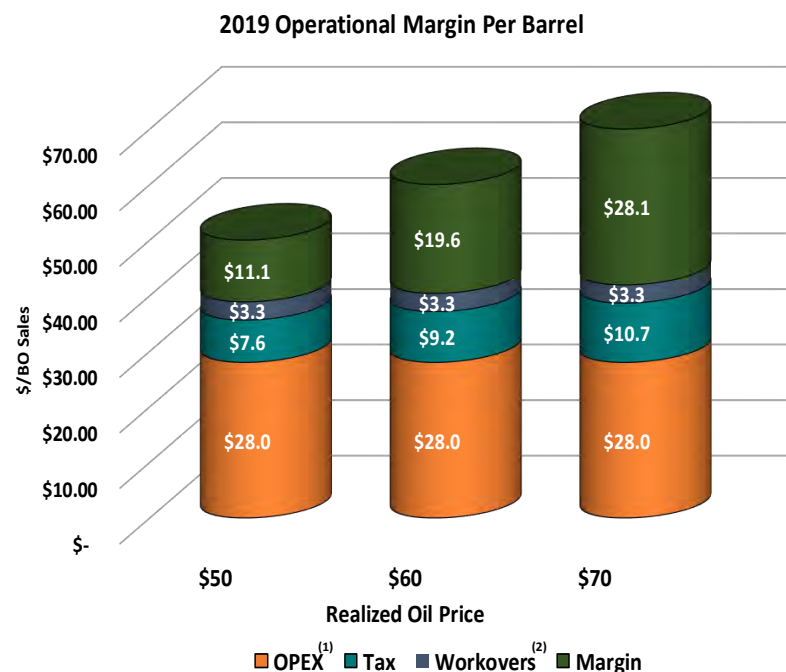
Production Volume per day

10%

FY 2018

VAALCO Free Cash Flow Overview (2019E)

Maximize Margins Through Cost Discipline



Each \$5/barrel improvement in oil price increases Free Cash Flow by >\$4 million and increases Adjusted EBITDAX by ~\$6 million

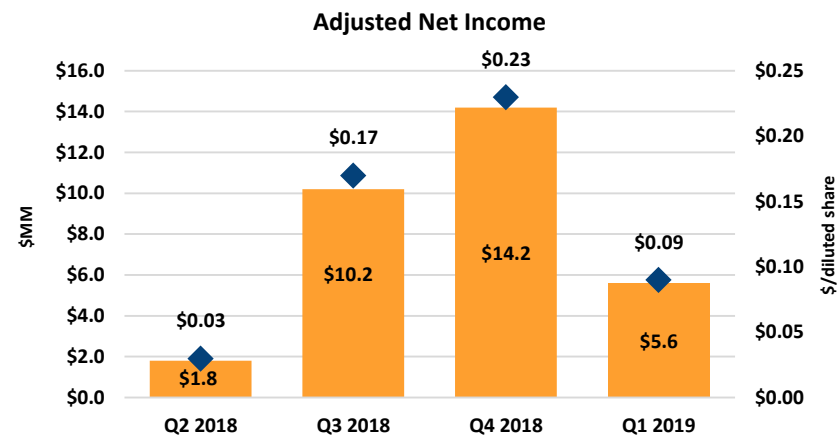
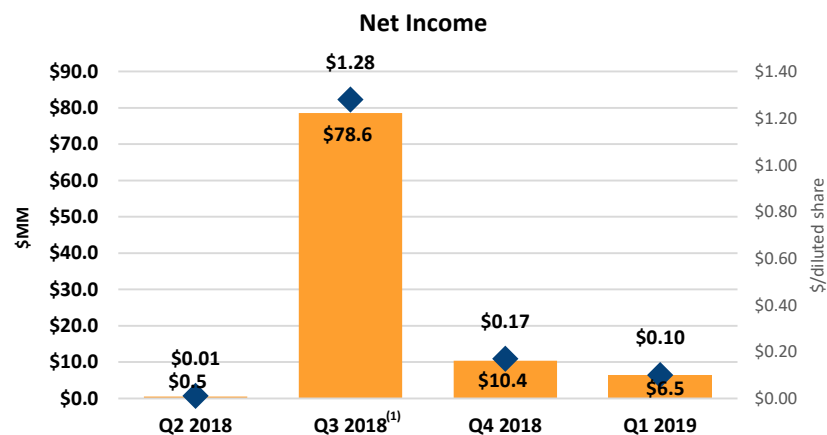
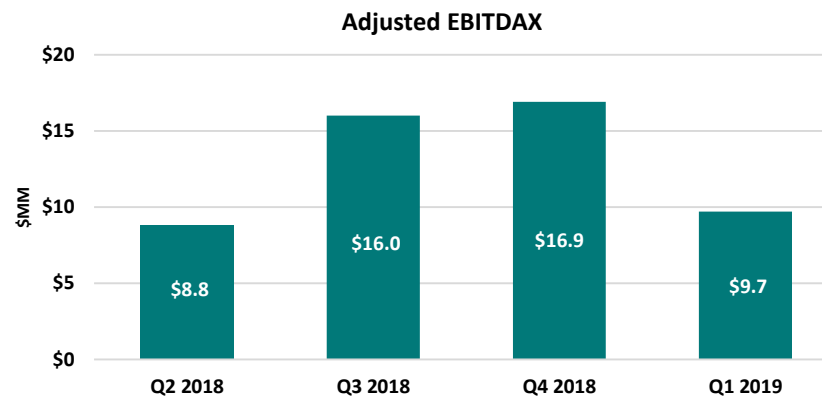
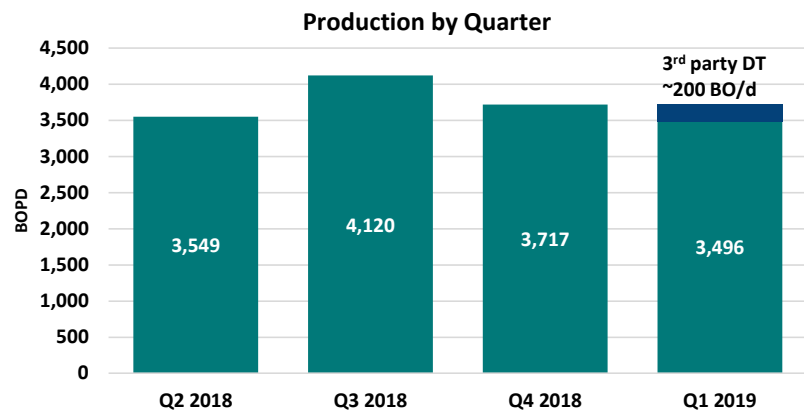
Free cash flow per barrel excludes 2019 Capex of ~\$25 - \$30 million

Operational Breakeven: ~\$37/BBL

Free Cash Flow Break-Even: ~\$47/BBL

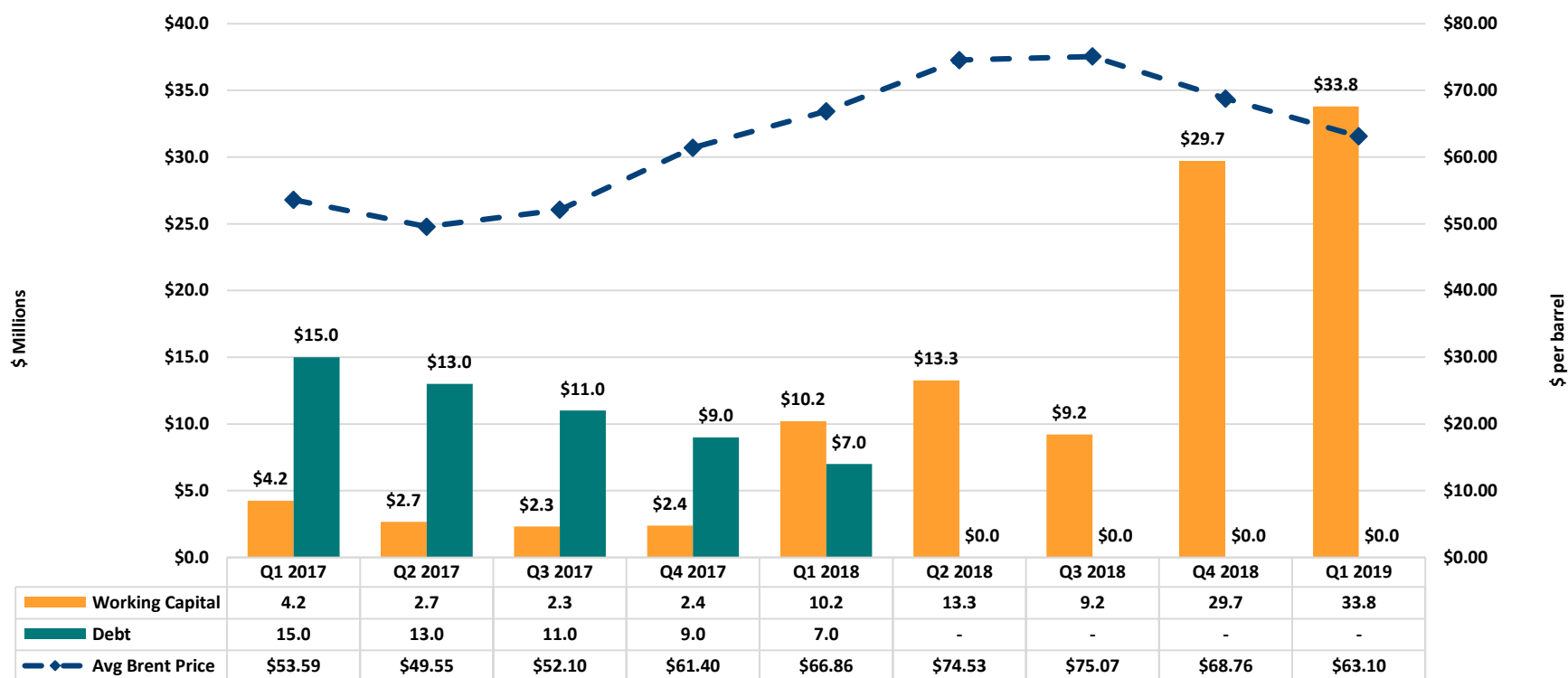
Key Performance Metrics

Profitable Results Build Financial Strength



Working Capital From Continuing Operations

Liquidity Position Continues to Improve



Hedging

Ensure Sufficient Cash Flow to Fund Future Drilling Campaigns

- June 2018: Swaps for 400,000 BBL at \$74.00 dated Brent for the June 2018 to June 2019 period
- May 2019: Swaps for 500,000 BBL at \$66.70 dated Brent for the July 2019 to June 2020 period
- Volumes represent approximately one-third of net sales for the hedged period
- As of May 7, 2019, swaps for 568,000 BBL are remaining



Share Repurchase Program

Returning Value to Shareholders

- On June 20, 2019 the Board authorized a stock repurchase program
- VAALCO can repurchase up to \$10 million of the currently outstanding shares of common stock
- The program period will last up to 12 months through open market purchases, privately-negotiated transactions, or otherwise in compliance with SEC Rule 10b-18
- Strong cash flow and overall financial position allows for share repurchase program as well as planned 2019/20 drilling program at Etame



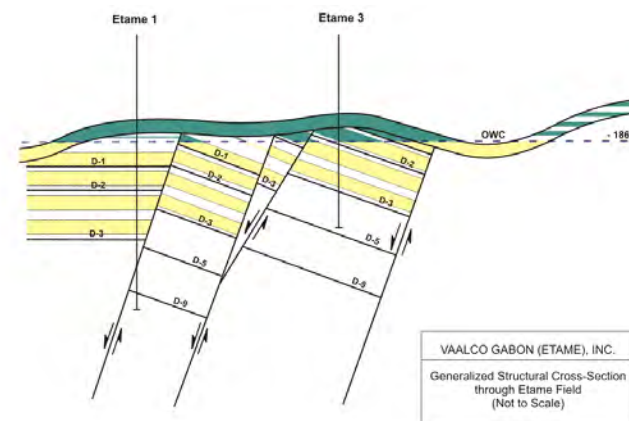
Additional Etame Technical Detail



VAALCO ENERGY, INC.

VAALCO Offshore Gabon Etame Reservoirs

- Located in Prolific South Gabon basin in shallow water (~85m)
- Numerous undrilled opportunities at moderate drilling depths (1800m TVD to 2900m TVD)
- Continuous overlying salt sheet provides an effective seal for Gamba/Dentale reservoirs
- Oil was generated from world-class lacustrine source rocks
- Gamba Sandstone reservoir characteristics:
 - Aptian age (mid-Cretaceous)
 - A nearly-continuous deposit across the entire block
 - Exceptional aquifer support
 - Porosity ranges up to 33%
 - Permeability approaches or exceeds 4 Darcies (4000 mD)
- Production rates from horizontal wells can exceed 5,000 BOPD, with limited pressure drawdown
- Recovery factors approach or exceed 50%
- The deeper Dentale formation includes a number of targets in a sand-shale sequence with favorable reservoir properties



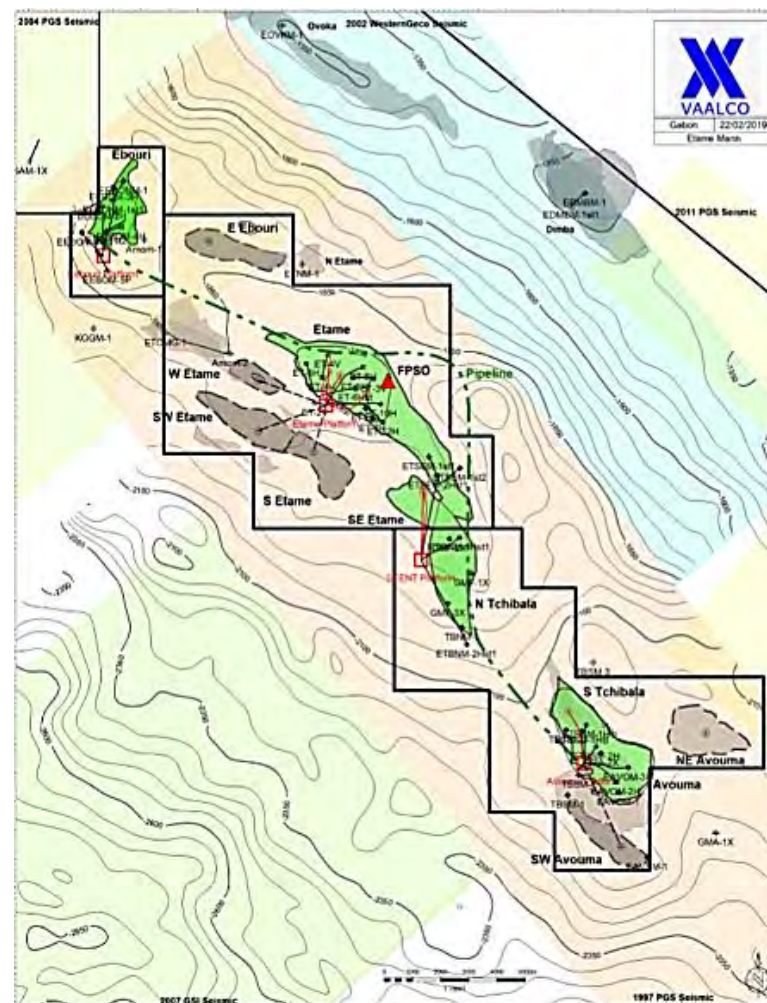
Stratigraphic Column

	Age	Lithology	Formation	Tectonic Phase
Upper Tertiary	Recent - Pleist.		Akasso	Drift - Sag
	Miocene		M'Bega	
			Mandorove	
	Eocene		Animba	
			Ozouri	
	Senonian		Pt. Clairette	
Lower Cretaceous	Turonian		Anguille	Transitional
	Cenomanian		Azile	
			Cap Lopez	
	Albian		Mediela	
	Aptian		Ezanga	
			Vembo	
			Gamba	
	Barremian		Dentale	Late Rift
			Melania	

VAALCO Etame Offshore License

- Operator with 31.1% WI and 27.1% NRI (net of royalty)
- Joint Owners: Sinopec (Addax), Sasol, PetroEnergy
- Current producing wells: 12.5 MMBO of proved and 7.7 MMBO probable gross developed reserves at year-end 2018
- Infrastructure in place for further development

Platform	Producing Wells	Gross BOPD
Etame	2	~ 2,850
SEENT	3	~ 3,500
Avouma	3	~ 4,000
Ebouri	1	~ 850
FPSO Subsea	3	~ 2,200
Total	12	~ 13,400⁽¹⁾



Fully Funded 2019/20 Work Program

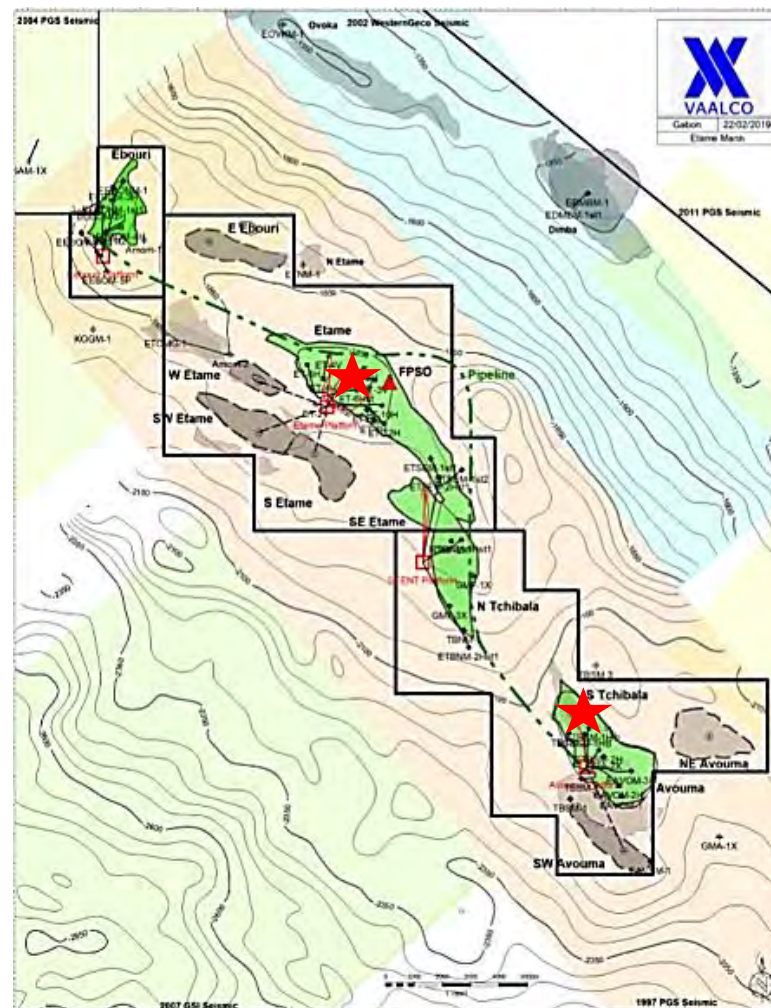
Creating Value through Development Drilling

2019 Development Drilling Locations ★

Etame 9H well: Gamba horizontal between the two highest gross producing wells in Etame Marin

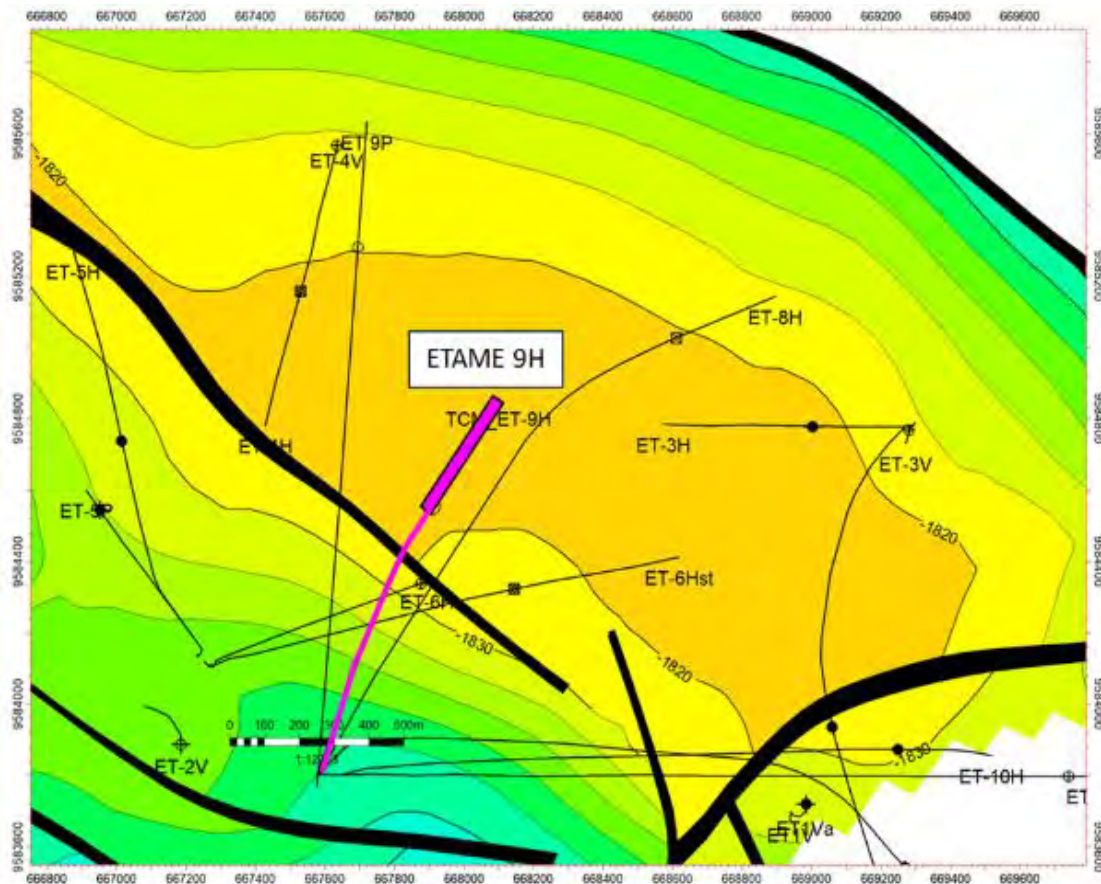
South Tchibala 3H well: Gamba horizontal well in an untapped area offsetting South Tchibala wells

2018 YE 2P development well reserves: 11.7MMBO gross/3.2MMBO net reserves



2019/20 Drilling Program:

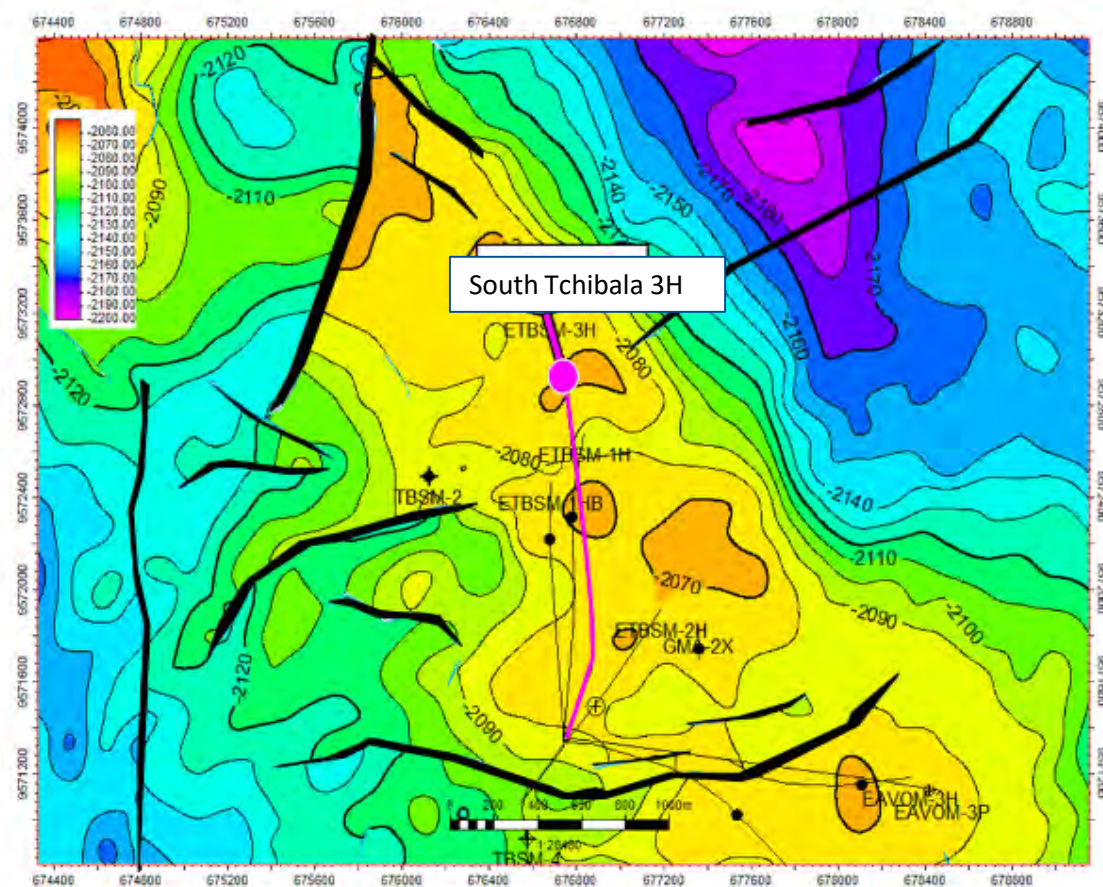
Etame Field Main Fault Block Dentale Development



- The Etame-9H is a horizontal development well offsetting the Etame-4H and Etame-6H
- Reserve potential:
6.2 MMBO gross 2P
1.7 MMBO net 2P
- Estimated development costs:
\$22.5 - \$27.5 million gross
\$7.5 – \$9.5 million net
- Expected stabilized IP rate:
2,500 – 3,500 gross BOPD
675 – 960 net BOPD

2019/20 Drilling Program:

South Tchibala North Extension Area



- Gamba reservoir north of the South Tchibala 1H is currently undeveloped
- South Tchibala 3H will be drilled as a high angle development well
- South Tchibala 3H potential:
5.5 MMBO gross 2P
1.5 MMBO net 2P
- Estimated development costs:
\$25 - \$30 million gross
\$8.5 - \$10 million net
- Expected stabilized IP rate:
3,500 – 4,500 gross BOPD
950 – 1,200 net BOPD

Fully Funded 2019/20 Work Program

Creating Value through Appraisal Drilling

2019 Appraisal Locations

SEENT Platform 4P: Gamba appraisal well bore, if successful proves 4H well and 2 additional Gamba locations, converting ~6.0MMBO prospective resources at YE 2018 to ~3.7MMBO 2P and ~2.3MMBO to contingent

SEENT Platform 4H well: Gamba horizontal development well

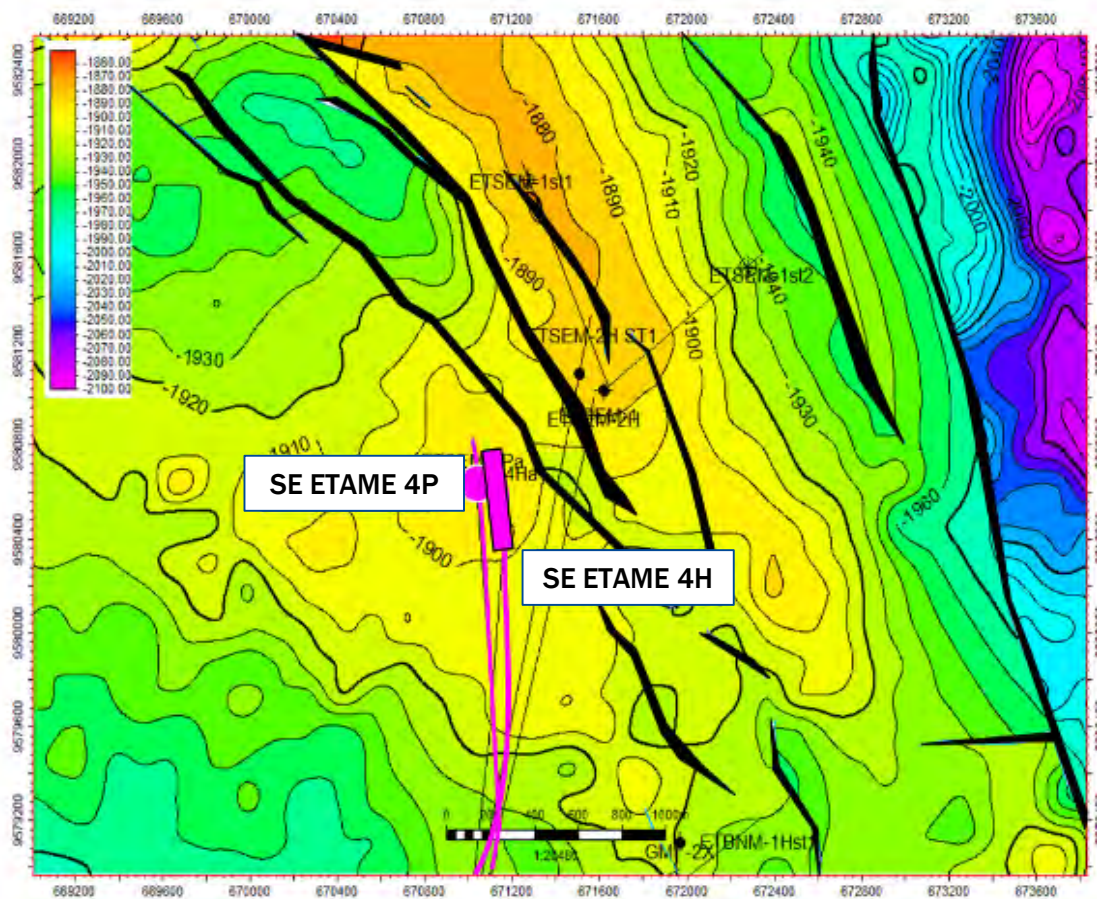
2018 YE development well reserves: ~4.2MMBO gross/ 1.1MMBO net prospective resources at YE 2018, converting ~4.0MMBO to PDP and ~0.2MMBO to contingent

Etame Platform 9P: Dentale appraisal well bore, if successful proves 3 locations, converting ~4.6MMBO prospective resources at YE 2018 to 3.2MMBO 2P and 1.4MMBO to contingent



2019/20 Drilling Program:

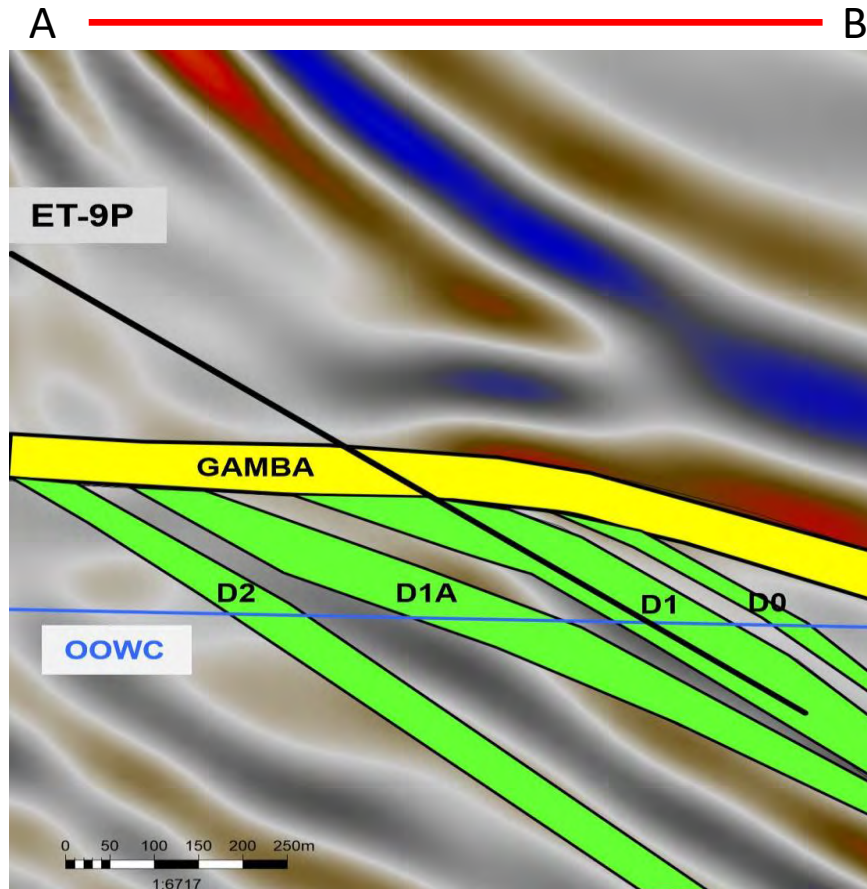
SE Etame Fault Compartment/Step Out Area



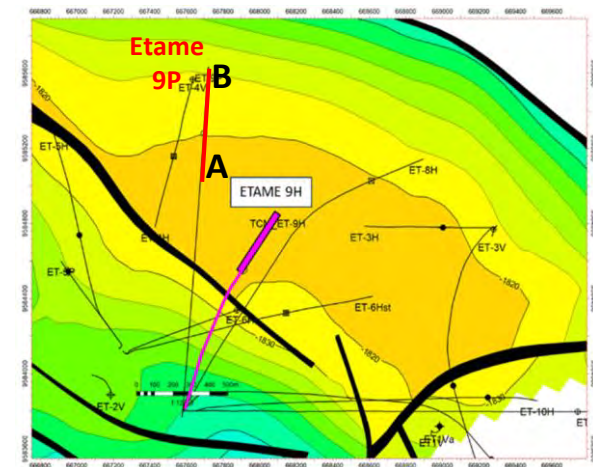
- SE Etame 4P appraisal well bore will evaluate the Step Out area, interpreted as an extension from the SE Etame 2H
- The SE Etame 4H will be drilled into the Step Out area targeting the Gamba
- SE Etame 4H potential:
4.2 MMBO gross prospective
1.1 MMBO net prospective
- Estimated development costs:
\$30 - \$35 million gross
\$9 - \$11 million net
- Expected stabilized IP rate:
3,000 – 4,200 gross BOPD
825 – 1,100 net BOPD

2019/20 Drilling Program:

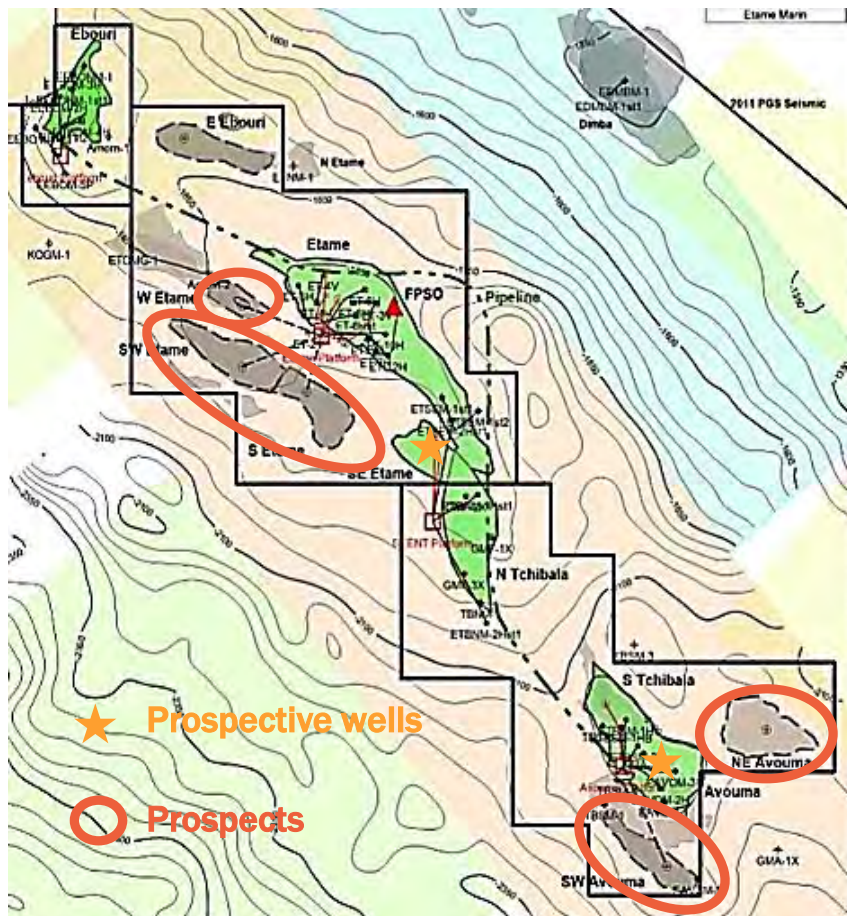
Etame Field Main Fault Sub Crop Dentale Appraisal



- Etame 9P appraisal well bore evaluates the sub crop Dentale potential
- Dentale sands beneath the Gamba reservoir at the Etame field
- These sands have been previously recognized as oil bearing in earlier drilled wellbores
- De-risks up to 3 Dentale wells
- 4.6 MMBO gross prospective resources



Additional Etame Gamba Opportunities



Probable Drilling Location:

- Etame Platform 11H well: Gamba horizontal 2P reserves 4.1 MMBO gross/1.1 MMBO net reserves

Prospective Step Out Locations:

SEENT Platform:

- Three Gamba wells (7.7 MMBO gross)

Avouma Platform, South Tchibala:

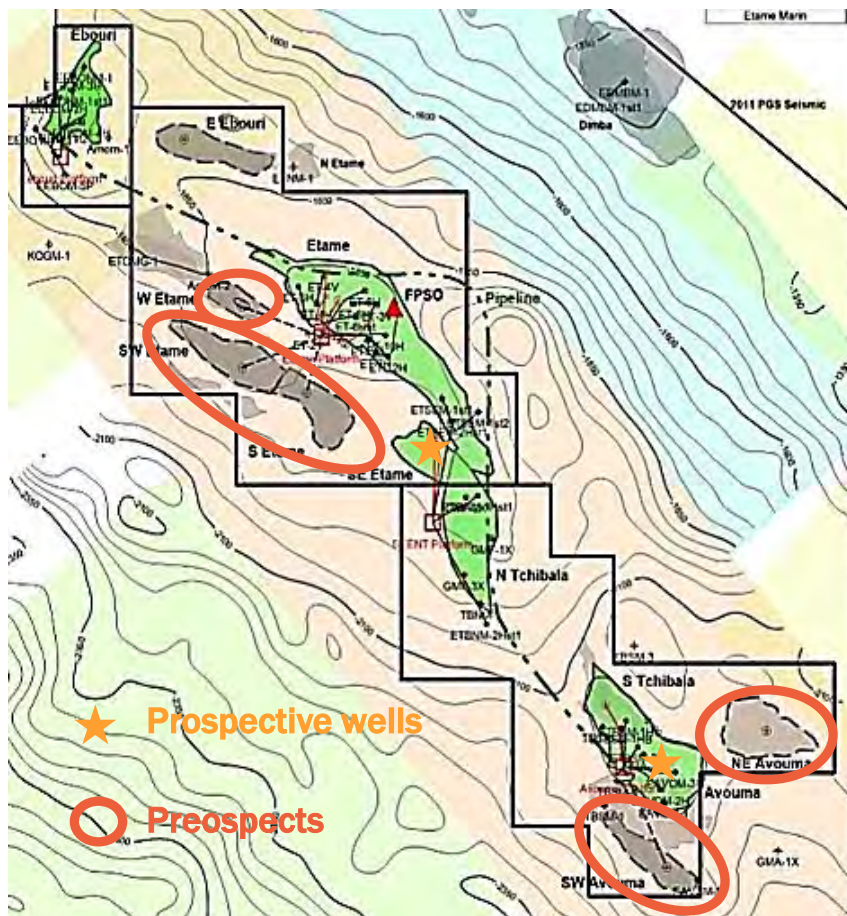
- One Gamba well (2.1 MMBO gross)

Prospects:

- Provide significant upside opportunities
- Additional opportunities (19.9 MMBO gross)
- Determine viability of additional resources on expanded acreage

**~33 MMBO of Gross Unrisked Recoverable
Prospective Resources from Gamba Opportunities**

Additional Etame Dentale Opportunities



Additional Prospective Locations:

Etame Platform:

- Six Dentale infills (10.2 MMBO gross)

SEENT Platform:

- Three Dentale infills (4.5 MMBO gross)

Avouma Platform:

- Two Dentale infills (3.5 MMBO gross)

Additional Contingent Opportunities:

SEENT Platform:

- One Dentale infill (2.6 MMBO gross)
- One Dentale stimulation (1.8 MMBO gross)

**~23 MMBO of Gross Unrisked Recoverable
Prospective & Contingent Resources from
Dentale Opportunities**

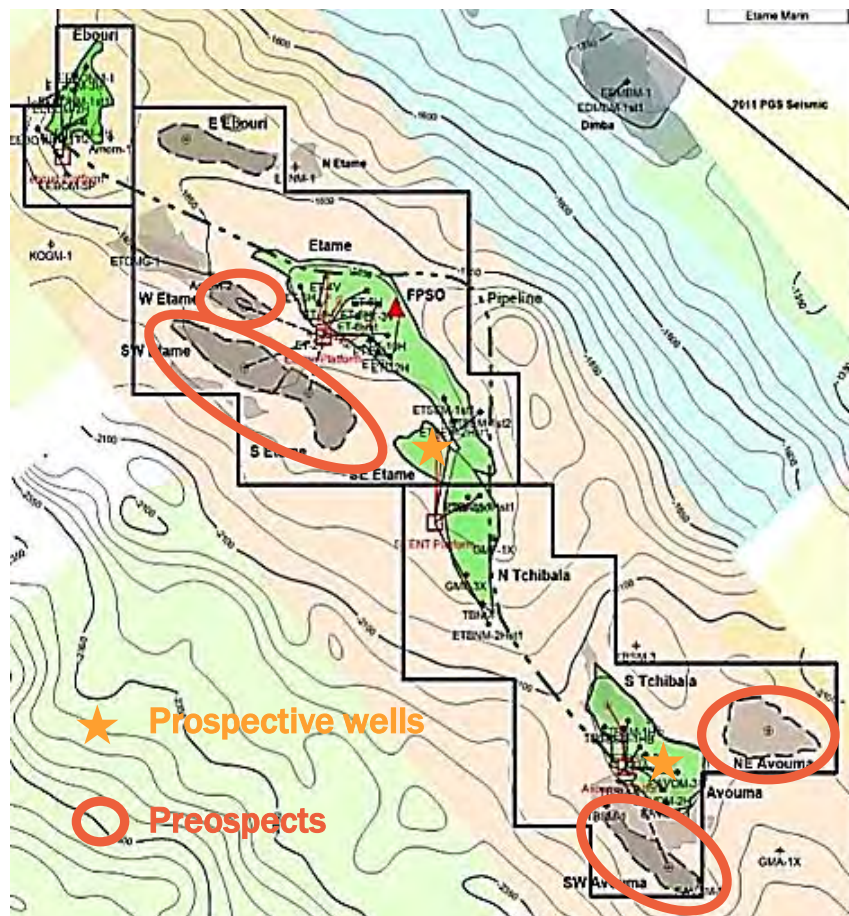
Crude Sweetening Project (CSP)

- 3 wells drilled and shut in due to H2S in Ebouri and Etame fields
 - Ebouri 3H and Ebouri 4H existing wells: 5.3 MMBO gross contingent resource
 - Initial tests of ~ 800 – 1,500 gross BOPD per well
 - Management's gross internal prospective resource estimate is 1.2 MMBO higher than the contingent resource amount
 - Etame 8H existing well: 4.3 MMBO gross prospective resources
 - East Ebouri additional drilling potential of 6.6 MMBO gross prospective resources
- CSP assessment to be conducted in 2019 as a result of the commitment made with the Etame Marin license extension
- Evaluating economic potential in current pricing environment and looking at ways to minimize costs to enhance returns
- CSP could extend total Etame field life

Lower Resource Risk with ~17 MMBO of Gross Upside Potential

Etame Marin Gross Contingent Resources

Upside Resources Beyond 2028



Etame Marin Contingent Resources (2C)

Etame Platform: (3.9 MMBO gross)

SEENT Platform: (0.5 MMBO gross)

Avouma Platform: (7.2 MMBO gross)

Ebouri Platform: (1.2 MMBO gross)

Undeveloped Locations: (3.0 MMBO gross)

VAALCO has two five-year options to extend the Etame license beyond 2028 and convert these resources to reserves

~16 MMBO of Gross Unrisked Recoverable Contingent Resources from Existing Fields at Etame

Why VAALCO Now?

Leveraging From a Strong Platform to Deliver Growth

Established operator with a proven track record in Africa

Strong management team with extensive industry experience

Solid financial footing with no debt and ample working capital

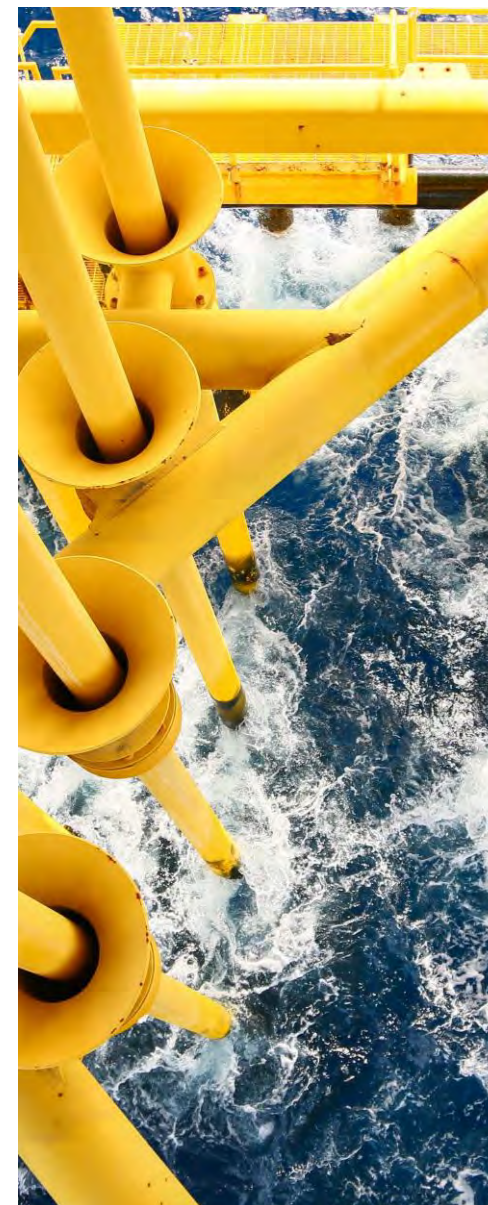
Profitable free cash flow from low risk reserve base

Material upside from existing Etame field

Fully funded active work program providing multiple catalysts

Solid foundation to pursue opportunistic inorganic growth

Focused on Delivering Long-Term, Sustainable Growth



Appendix



VAALCO ENERGY, INC.

2019 Full Year Guidance

(As of May 9, 2019)

Net Production (BOPD)	3,300 – 3,900*
-----------------------	----------------

*2nd Quarter 3,600 – 3,800

Sales Volume (BOPD)	3,400 – 3,800
---------------------	---------------

Production Expense ⁽¹⁾	\$36 - \$42 MM
-----------------------------------	----------------

2nd Quarter Guidance (\$27.00 - \$31.00 per BO) (\$26.00 - \$30.00 per BO)

Workovers	\$3.0 - \$6.0 MM
-----------	------------------

Cash G&A	\$9 - \$10 MM
----------	---------------

Stock-based	~\$3 - 5 MM
-------------	-------------

Total G&A	\$12 - \$15 MM
-----------	----------------

DD&A (\$/BO)	\$5.50 - \$6.50/BO
--------------	--------------------

CAPEX	\$20 - \$25 MM
-------	----------------

(1) Excludes workover expense

Non-GAAP Reconciliations

	Three Months Ended			Year Ended	
	March 31, 2019	March 31, 2018	December 31, 2018	2018	2017
Reconciliation of Net income to Adjusted EBITDAX					
Net income	\$ 6,501	\$ 8,659	\$ 10,424	\$ 98,232	\$ 9,651
Add back:					
Impact of discontinued operations	(5,671)	52	80	496	621
Interest expense (income), net	(187)	354	(128)	145	1,414
Income tax expense	2,753	4,042	11,346	(43,254)	10,378
Depreciation, depletion and amortization	1,553	1,124	2,307	5,596	6,457
Exploration expense	—	—	2	14	7
Non-cash or unusual items:					
Stock-based compensation	1,723	314	(1,486)	2,306	1,098
Accrued liabilities reversal	-	-	-	-	(2,614)
Unrealized derivative instruments (gain) loss	3,043	-	(5,584)	(3,520)	1,032
Equipment recovery (disposal)	37	(24)	(33)	(365)	-
Gain on revision of asset retirement obligation	-	-	-	(3,325)	-
Bad debt recovery and other	(29)	(56)	(9)	(77)	452
Adjusted EBITDAX	<u>\$ 9,723</u>	<u>\$ 14,465</u>	<u>\$ 16,919</u>	<u>\$ 56,248</u>	<u>\$ 28,496</u>

	Three Months Ended			Year Ended	
	March 31, 2019	March 31, 2018	December 31, 2018	2018	2017
Reconciliation of Net income to Adjusted Net Income					
Net income	\$ 6,501	\$ 8,659	\$ 10,424	\$ 98,232	\$ 9,651
Adjustment for discrete items:					
Discontinued operations, net of tax	(5,671)	52	80	496	621
Unrealized derivative instruments (gain) loss	3,043	—	(5,584)	(3,520)	1,032
Gain on revision of asset retirement obligation	—	—	—	(3,325)	—
Deferred income tax expense	1,742	—	9,284	(56,907)	(1,260)
Adjusted net income	<u>\$ 5,615</u>	<u>\$ 8,711</u>	<u>\$ 14,204</u>	<u>\$ 34,976</u>	<u>\$ 10,044</u>

	As of		
	March 31, 2019	March 31, 2018	December 31, 2018
Reconciliation of working capital from continuing operations			
Current assets	\$ 62,026	\$ 55,504	\$ 6,522
Current liabilities	28,258	25,799	2,459
Working capital from continuing operations ⁽¹⁾	<u>\$ 33,768</u>	<u>\$ 29,705</u>	<u>\$ 4,063</u>

⁽¹⁾ Excludes current assets and current liabilities attributable to discontinued operations and lease liabilities.

Contact

Corporate Office

9800 Richmond Avenue,
Suite 700, Houston, Texas 77042

T 713.623.0801

F 713.623.0982

E vaalco@vaalco.com

Branch Office

VAALCO Gabon SA
B.P. 1335,
Port Gentil, Gabon

T +241-(0)1-56-55-29

Investor Contacts

U.S. - Al Petrie

T 713.543.3422

E apetrie@vaalco.com

U.K. - Ben Romney / Chris Judd

T 44.0.20.7466.5000

E vaalco@buchanan.uk.com

www.vaalco.com



VAALCO ENERGY, INC.