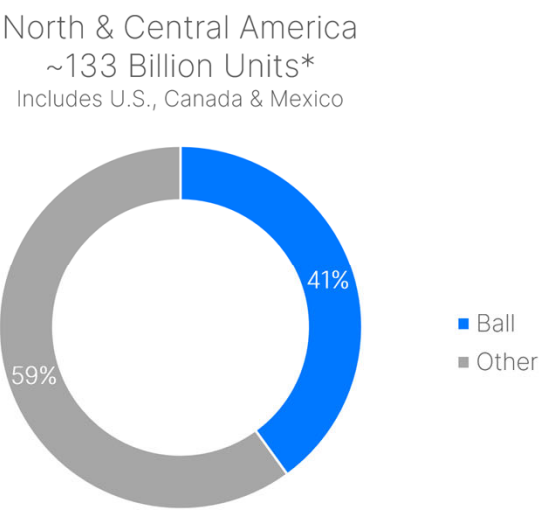


BEVERAGE PACKAGING NORTH & CENTRAL AMERICA

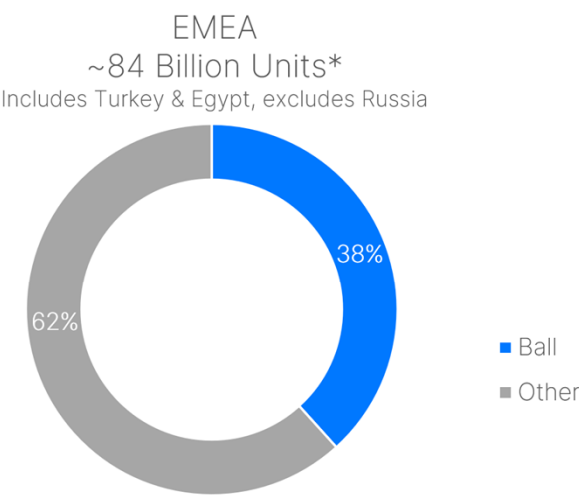
- 24 manufacturing plants*; 20 with specialty capability
- Product mix:
 - ~37% specialty
 - ~63% standard cans
- Category mix:
 - ~65% CSD & domestic beer
 - ~35% Other, craft beer, imported beer
- Currently producing 18+ can and bottle sizes



*Management estimates as of 12/31/2021. Industry positions do not include competition from other substrates or imports. Represents facilities operating as of August 2022.
**Logos may be registered trademarks of their respective owners.

BEVERAGE PACKAGING EMEA

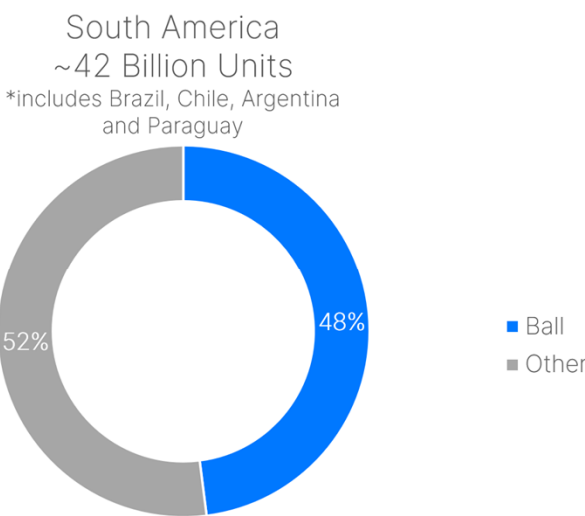
- 19 manufacturing plants*
- Product mix:
 - ~50% specialty
 - ~50% standard
- Category mix:
 - ~67% CSD/Energy/Other
 - ~33% Beer
- Capability to produce 11 sizes
- Constructing new can plant in the Czech Republic, and UK announced for 2023



*Management estimates as of 12/31/2021 including Turkey and Egypt but excluding Russia. Industry positions do not include competition from other substrates or imports. Represents facilities operating as of August 2022.
**Logos may be registered trademarks of their respective owners.

BEVERAGE PACKAGING SOUTH AMERICA

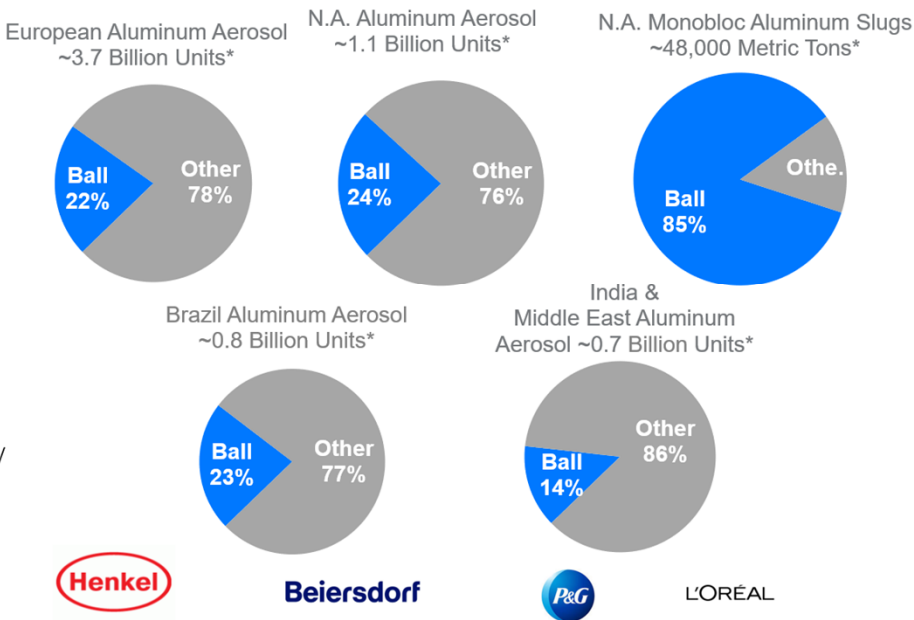
- 13 manufacturing plants*
- Product mix:
 - ~68% specialty
 - ~32% standard
- Category mix:
 - ~81% beer
 - ~19% CSD/other
- Capability to produce 8 can sizes



*Management estimates as of 12/31/2021. Industry positions do not include competition from other substrates or imports. Represents facilities operating as of August 2022.
**Logos may be registered trademarks of their respective owners.

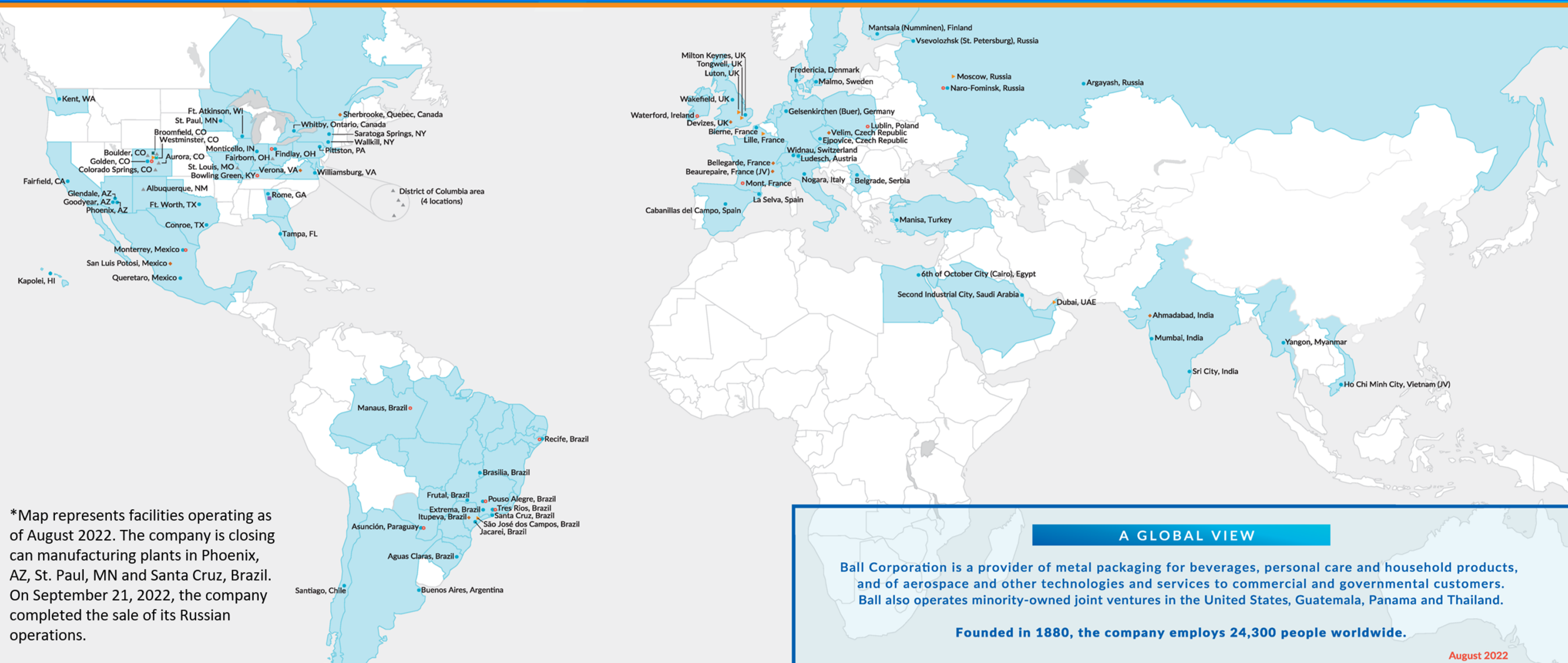
BALL AEROSOL PACKAGING

- 6 aerosol manufacturing plants
- 3 slug manufacturing plants, including 1 JV in Europe
- Product mix:
 - Beauty and Personal Care represents 80%+ of aluminum aerosol volume
- Aluminum aerosol global industry estimated to be ~8 billion units



*Management estimates as of 12/31/2021. Industry figures do not include competition from other substrates or imports.
**Logos may be registered trademarks of their respective owners.

LEVERAGING OUR GLOBAL FOOTPRINT



LEGEND

- Headquarters
- Beverage Packaging
- Beverage Ends
- Aluminum Cups
- Aluminum Aerosol Packaging
- Aerospace
- Regional Office
- Technology & Innovation Center