



NASDAQ: WISA

High-quality Wi-Fi Audio Delivering Immersive Sound

WiSA Technologies, Inc. Q4 2021 Investor Call
March 11, 2022

Forward Looking Statements



This presentation of WiSA Technologies, Inc., formerly Summit Wireless Technologies, Inc. (NASDAQ: WISA) (the “Company” or “WiSA”) contains forward-looking statements within the meaning of Section 27A of the Securities Act of 1933, as amended, and Section 21E of the Securities Exchange Act of 1934, as amended. Readers are cautioned not to place undue reliance on these forward-looking statements. Actual results may differ materially from those indicated by these forward-looking statements as a result of risks and uncertainties impacting Summit Wireless’ business including, current macroeconomic uncertainties associated with the COVID-19 pandemic, our inability to predict or measure supply chain disruptions resulting from the COVID-19 pandemic and other drivers, our the ability to predict the timing of design wins entering production and the potential future revenue associated with design wins; rate of growth; the ability to predict customer demand for existing and future products and to secure adequate manufacturing capacity; consumer demand conditions affecting customers’ end markets; the ability to hire, retain and motivate employees; the effects of competition, including price competition; technological, regulatory and legal developments; developments in the economy and financial markets and other risks detailed from time to time in the Company’s filings with the Securities and Exchange Commission, including those described in “Risk Factors” in our Annual Report on Form 10-K for the year ended December 31, 2021 filed with the SEC, as revised or updated for any material changes described in any subsequently-filed Quarterly Reports on Form 10-Q. The information in this presentation is as of the date hereof and the Company undertakes no obligations to update unless required to do so by law.

* WiSA Ready TVs, gaming PCs and console systems are "ready" to transmit audio to WiSA Certified speakers when a WiSA USB Transmitter is plugged in and a user interface is activated through an APP or product design like LG TVs.

© 2021 Summit Wireless Technologies, Inc. All rights reserved. Summit Wireless Technologies and the Summit Wireless logo are trademarks of Summit Wireless Technologies, Inc., SoundSend, The WiSA logo, WiSA, WiSA Ready, and WiSA Certified are trademarks, or certification marks of WiSA LLC. Third-party trade names, trademarks and product names are the intellectual property of their respective owners and product names are the intellectual property of their respective owners.

Historically, Immersive Audio was Confined to the Home Theater



WiSA technology enabled immersive home theater audio quality over wireless speakers

Leadership in Wireless Audio

Precise synchronization of audio and video

Extremely low latency

Transmission of multi-channel, high-bitrate, uncompressed audio streams

Guaranteed reliability of the wireless link

Synchronization of as many as 8 speakers

Strong engineering team with 10-years experience in high-quality audio over Wi-Fi



Opportunities for Market Growth

Ubiquitous fast Wi-Fi

Proliferation of multi-role speakers

Trends in audio consumption and audio codecs

WiSA in Production with Quality Audio Market Leaders



WiSA has defined and implemented the industry standard for wireless transmission of high-resolution, high-reliability wireless audio

- Unmatched market leadership in wireless audio for home theater
- Ensuring interoperability among high-quality wireless audio systems
- Working with the brand leaders in home theater audio quality

harman/kardon
by HARMAN

BANG & OLUFSEN

ONKYO

Klipsch

ENCLAVE

buchardt

VEDDAN

SAVANT

PIEGA
SWITZERLAND



Wharfedale



KEF

LITHEAUDIO

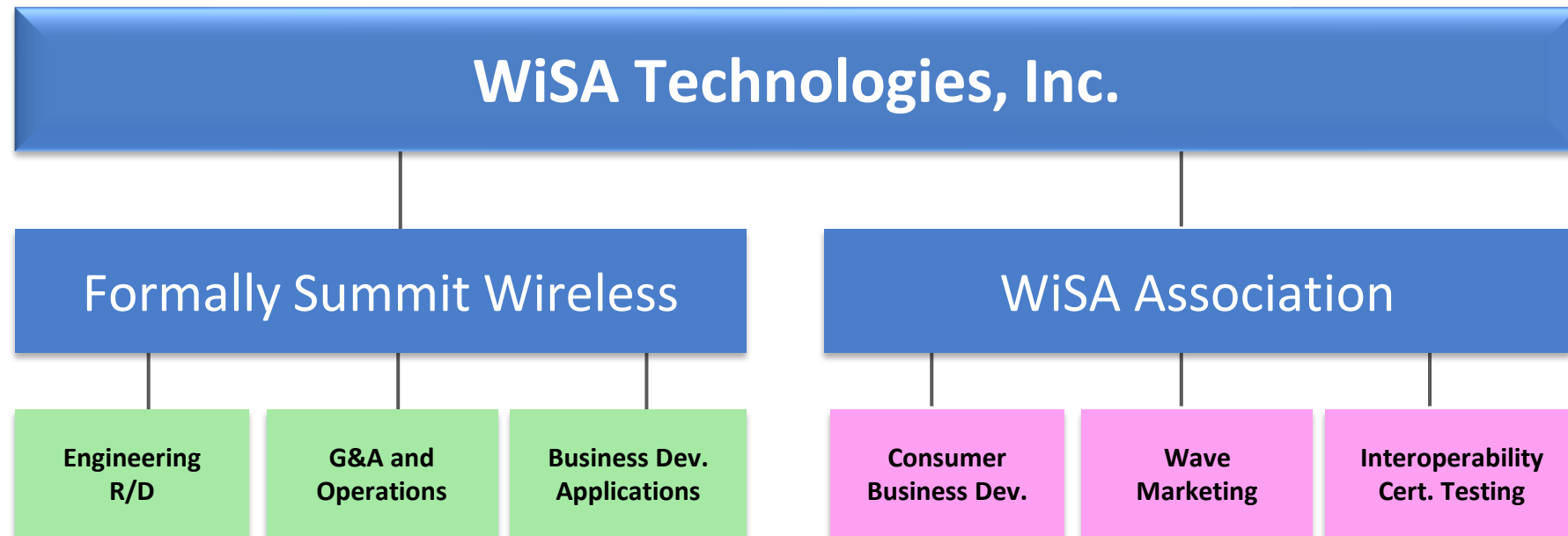
lexicon

Platin

Growth Strategy - Expanding our Role in the Category



Summit Wireless and WiSA Association now under WiSA Technologies, Inc. umbrella



Expansion of Consumer Awareness of WiSA



New branding strategy will increase visibility of cool products not branded interoperable!

LOG

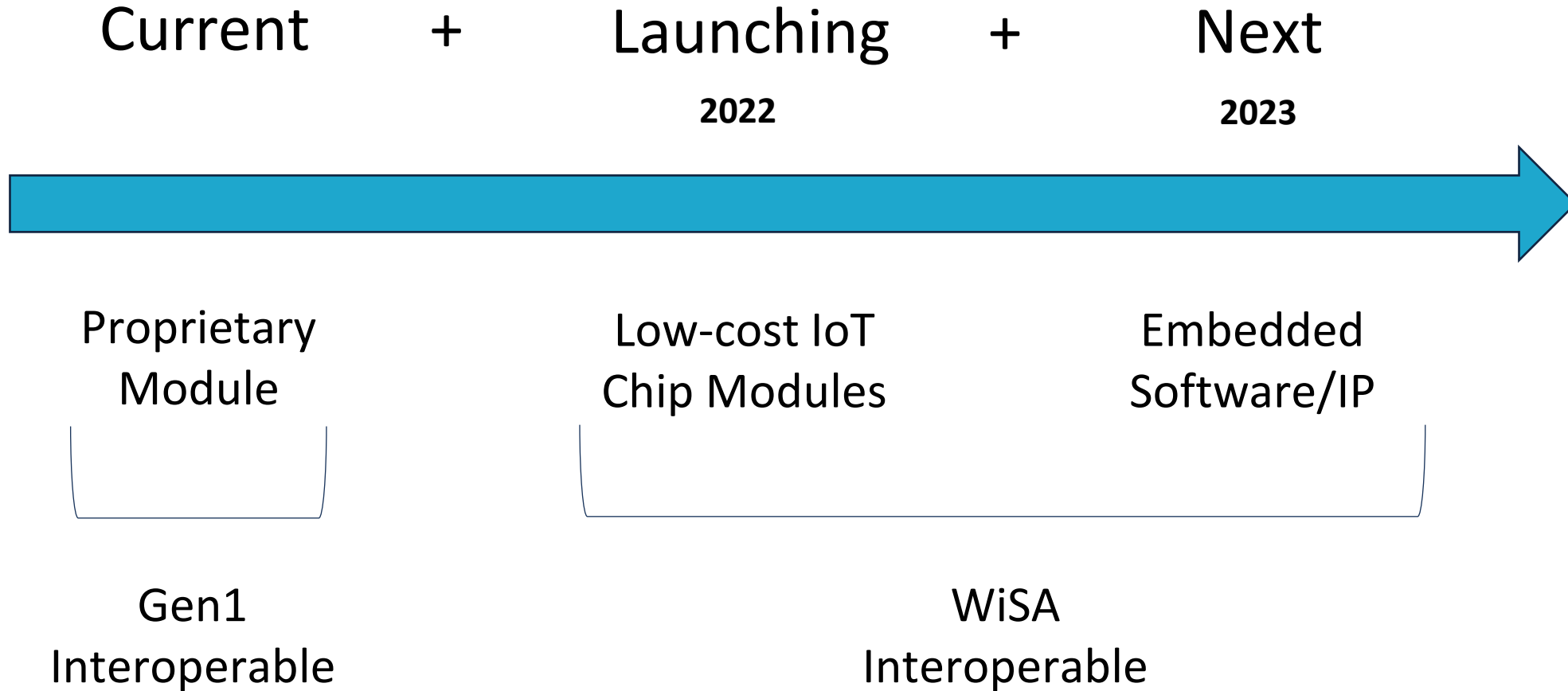


LOVESAC
STEALTHTECH



KEF
INNOVATORS IN SOUND

Moving Towards Lower Costs and Ubiquity

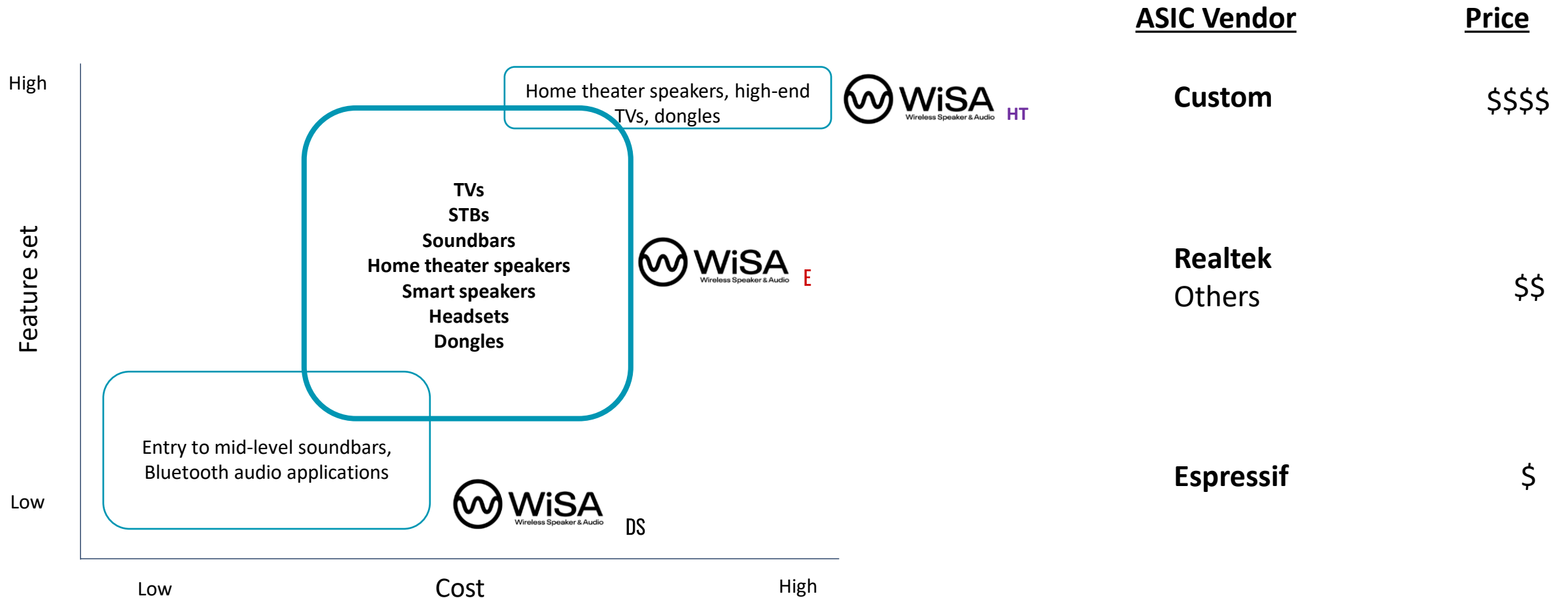


WiSA Product Families



WiSA Technologies has a 10-year history of providing feature-rich wireless spatial technology for the premium market.

WiSA Technologies' recent product and partnership announcements focus on bringing the same technical know-how to build and market wireless spatial technology for mass-market products.



Audio Market Segmentation



Audiophile

Bang & Olufsen



ONKYO
IMAGINATIVE SIGHT & SOUND

Klipsch®

WHARFEDALE

Lexicon®

KEF

LOVESAC
Designed for Life® Furniture Co.

PIEGA
S W I T Z E R L A N D

The EC LIVING
BY ELECTROCOMPANIE

Davone

SAVANT



DYNAUDIO

buchardt
DENMARK

wecler

System Audio A/S

LITHEAUDIO

LOG

VEDDAN

Sonos

\$2,086 Soundbar + rears + sub

Consumer

ENCLAVE
AUDIO

\$1,800 5.1 discrete speakers

\$1,100 5.1 discrete speakers

Platin

\$1,100 5.1 discrete speakers

\$ 950 5.1 discrete speakers

Audio Market Segmentation



Audiophile

Bang & Olufsen



ONKYO
IMAGINATIVE SIGHT & SOUND

Klipsch

WHARFEDALE

Lexicon

KEF

LOVESAC
Designed for Life® Furniture Co.

PIEGA
S W I T Z E R L A N D

The EC LIVING
BY ELECTROCOMPANIEET

Davone

SAVANT



DYNAUDIO

buchardt
DENMARK

wecler

sa System Audio A/S

LITHEAUDIO

Sonos

LOG

VEDDAN

Consumer

JBL

LG

Hisense



Bose

Martin Logan

Denon

Polk

Klipsch

Sony

Insignia

ELAC

HARMAN

LG

Vizio

Samsung

Platin

KEF

Bowers &
Wilkins

Nakamichi

Logitech

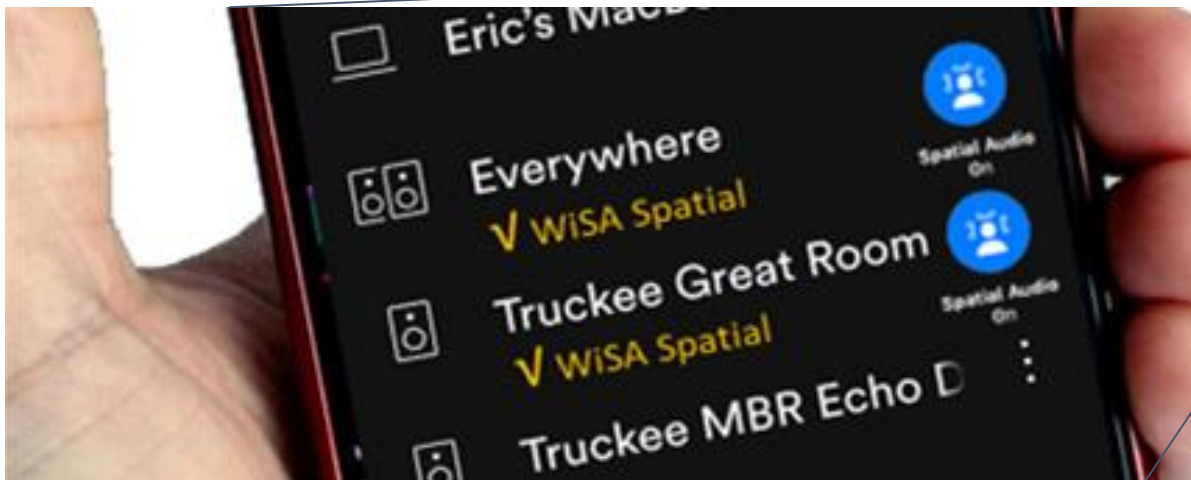
Yamaha

Definitive

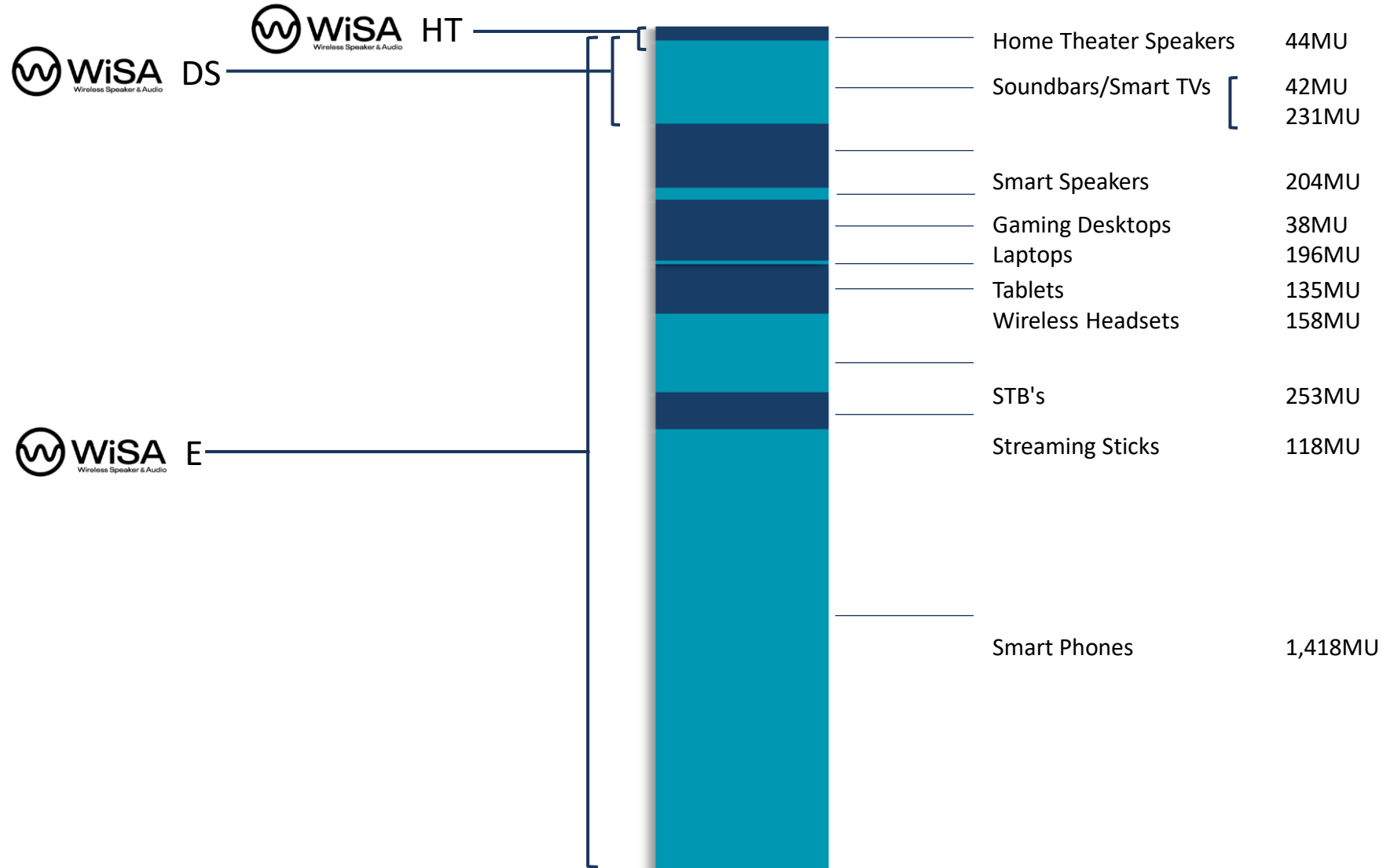
WiSA Delivers the Open Wi-Fi Transport for High-Quality Wireless Audio



- Audio source devices and speakers shared on common Wi-Fi network
- Combine multiple speakers to create spatial audio sound fields
- Seamlessly mix and match audio sources and speakers/headsets as desired



Growth Opportunities for WiSA (TAM)



Expanding WiSA's TV Application



The SoundSend app can be ported to TV Operating Systems for a seamless and elegant user experience

The app will be expanded from Android TVs to Web OS (LG) and Tizen (Samsung) in 2022



VIZIO

Hisense

Skyworth

SONY



BANG & OLUFSEN

TOSHIBA

PHILIPS

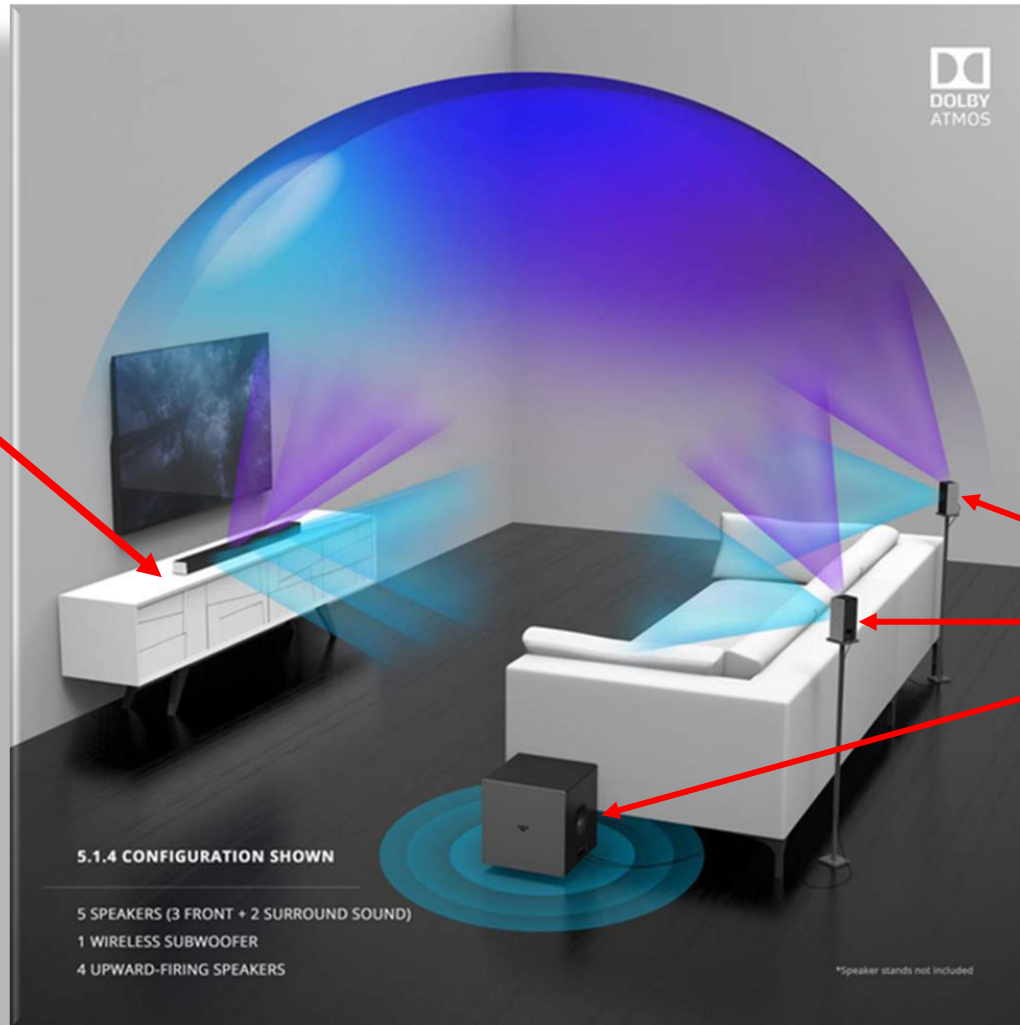
SHARP

Panasonic

WiSADs New Feature: March 2022



WiSADs Tx



Relative to Primary Competitor:

- More audio channels
- Stronger wireless performance
- Lower Price < \$15 for wireless modules

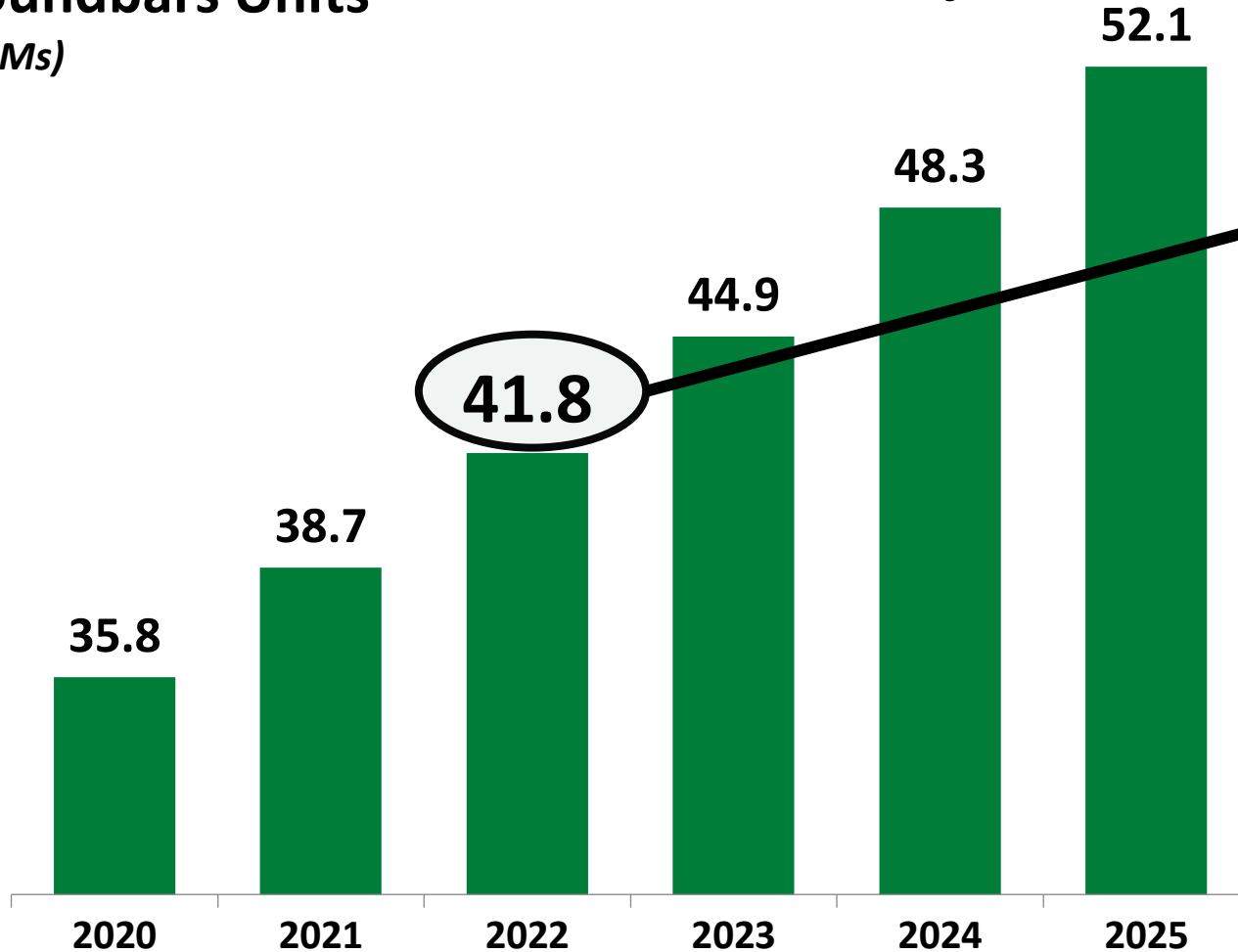
WiSADs Rx

Soundbars: Target Market of Discovery Technology



Soundbars Units*
(in Ms)

2022 Projected Soundbar SAM**



Audio Configuration

WiSADs

Soundbar units (Ms)

41.8

Market Share

5%

WiSA Systems (Ms)

2.1

Speakers per configuration

3

Transmitters per system

1

Modules (Ms)

8.4

Module ASP (\$ per unit)

\$3.00

Rev. Opportunity (Ms of \$)

\$25

* Source: Infiniti Research September 2021

** Management estimates: Factors include content availability, simplicity for the consumer, price, multiple brands

Where does WiSA Fit into the Spatial Audio Ecosystem?



Ecosystem Requirements for Spatial Audio

Content Publishing and Distribution: Spotify, Tencent, Amazon, YouTube, etc.

Wireless Medium: Wi-Fi

Spatial Audio Decode: Dolby Atmos, DTS-X, Spatial

Wireless Transport

Wireless Transport

- Precise synchronization across many disparate speakers
- Guaranteed reliability of the wireless link
- Ability to transmit multi-channel, high-bitrate audio streams
- Extremely low latency

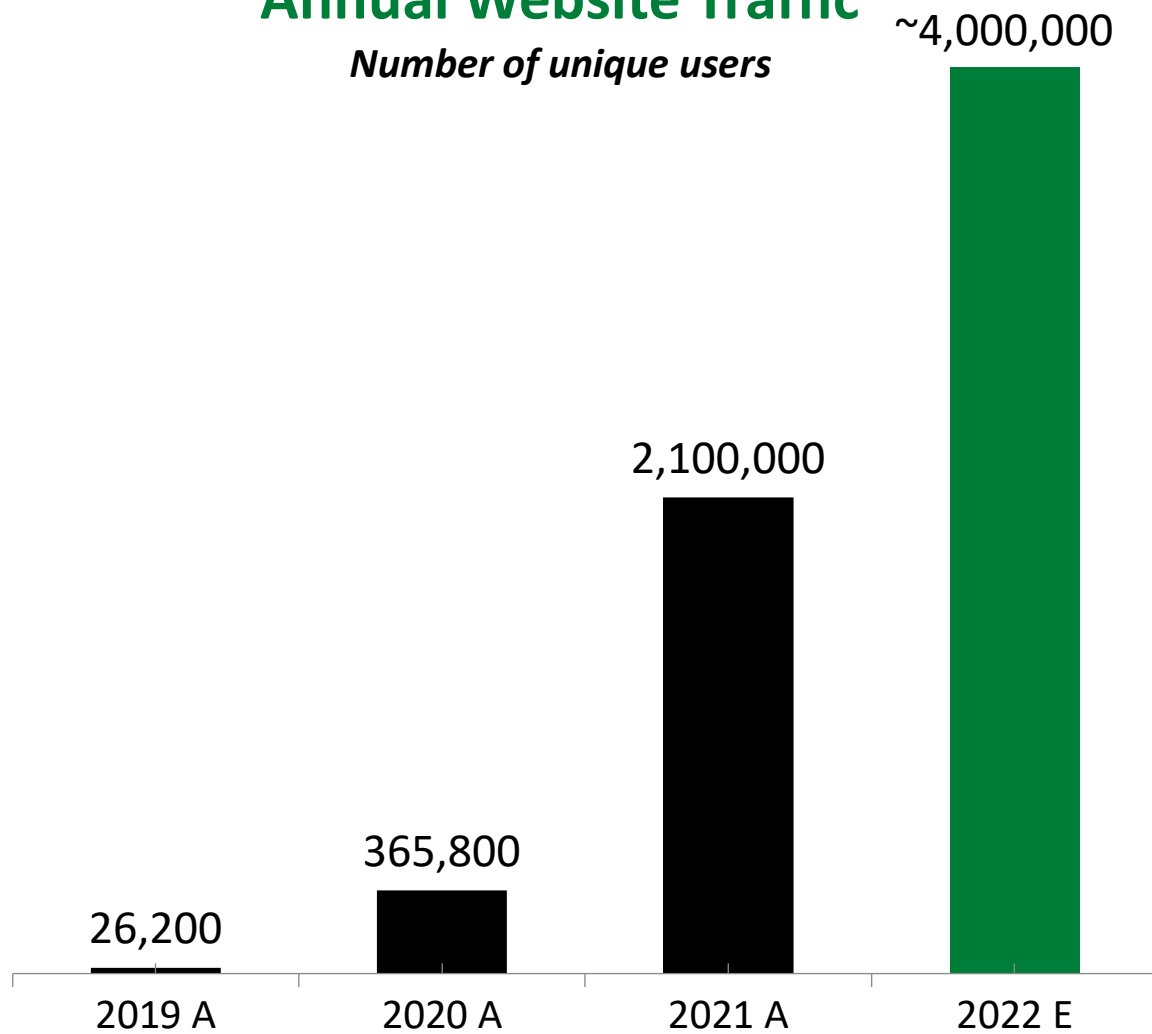


WiSA Growth Continues

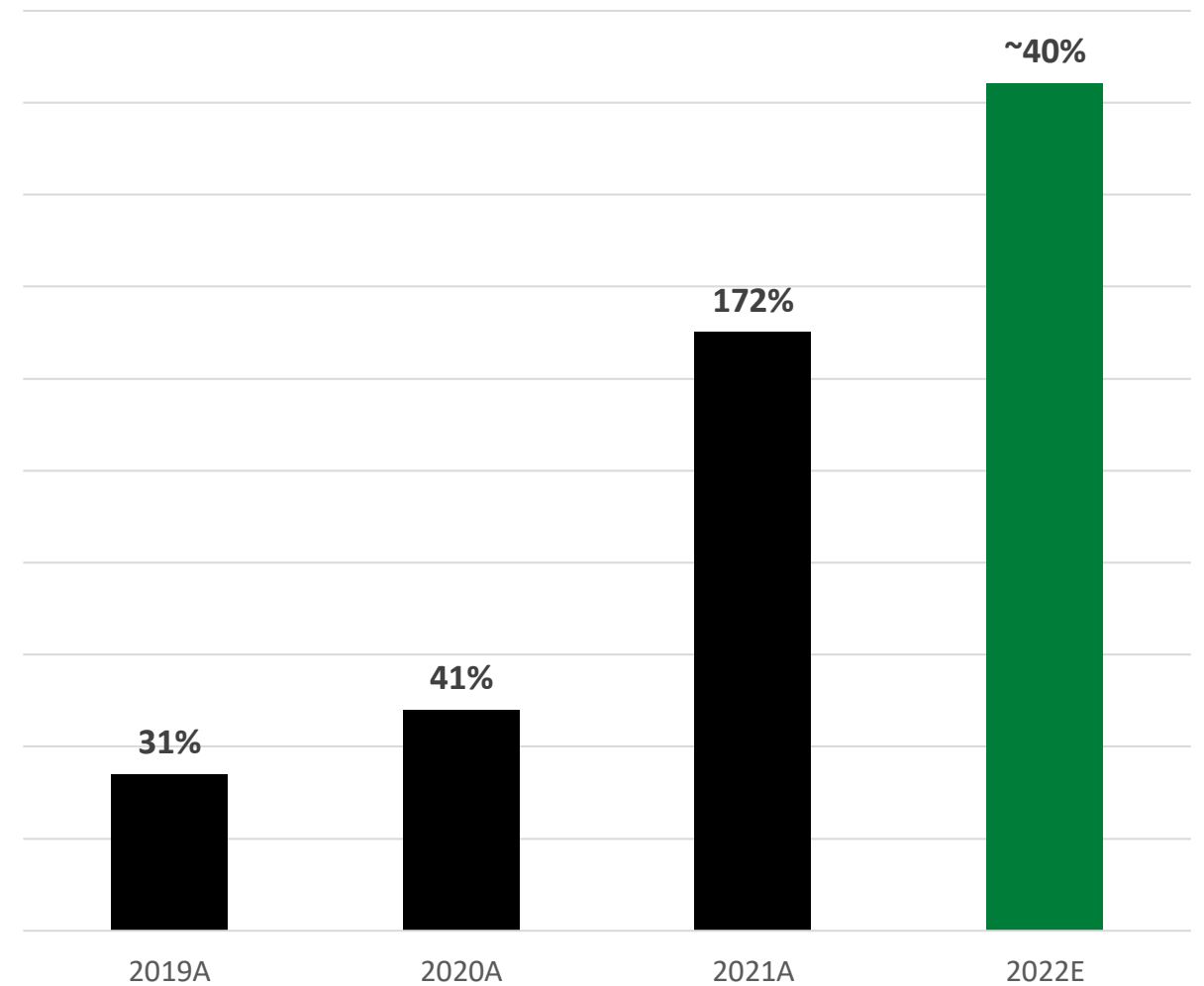


Annual Website Traffic

Number of unique users



Revenue and Growth YOY



93% Q4 2021 Revenue Growth



Q4 '21

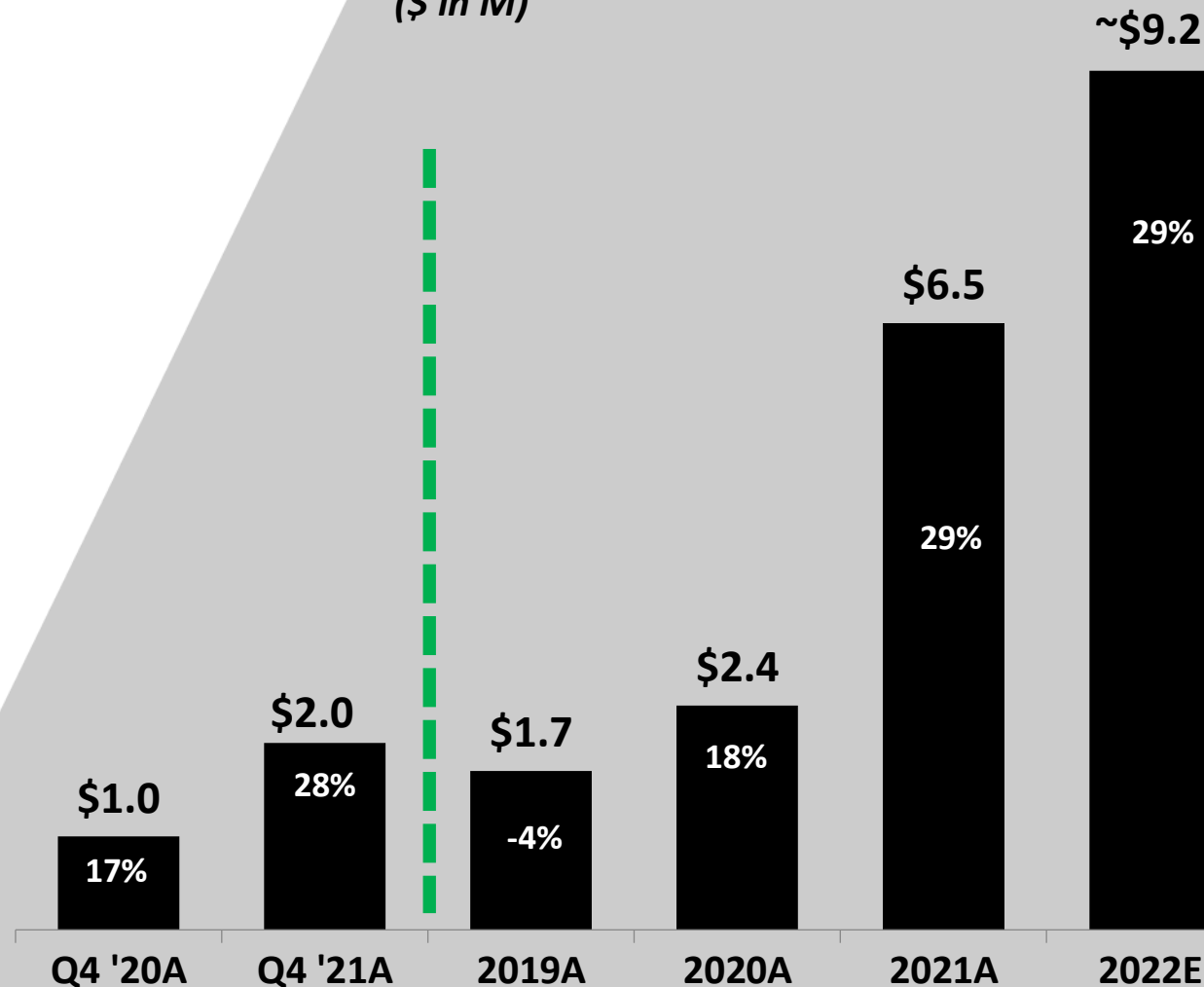
- \$2.0M revenue, up 93% vs. Q4 '20
- 30% gross margin, up from 24% in Q4 '20
- \$3.7M opex, including \$0.5M of non-cash, vs. \$3.9M, including \$0.9M of non-cash in Q4 '20
- \$3.1M net loss, vs. \$3.7M in Q4 '20
- \$13.1M cash 12/31/2021

2022 Guidance

- 30-50% full year revenue growth vs. full year 2021
- 28-30% gross margin target
- Sufficient cash through 2022

Revenue & Gross Margin

(\$ in M)





- Technology roadmap expands WiSA from Audiophile market to broad immersive audio consumer market with 1+B unit TAM
- Exit 2022 with 4 product lines contributing revenue in 2023
- Revenue ramp continues with 30-50% YOY growth expected in 2022
- Balance sheet has sufficient cash to complete development of 2.4 GHz and 5 GHz IoT solutions and operate through 2022
- We believe the sum of:
 - Explosive growth in immersive audio in the consumer market
 - The industry's only comprehensive wireless product offering for immersive audio
 - A thriving WiSA Association with its Wave initiative and trademarks
 - ... solidly positions WiSA Technologies to drive anticipated growth through 2022 and increasing shareholder value