



Investor Presentation

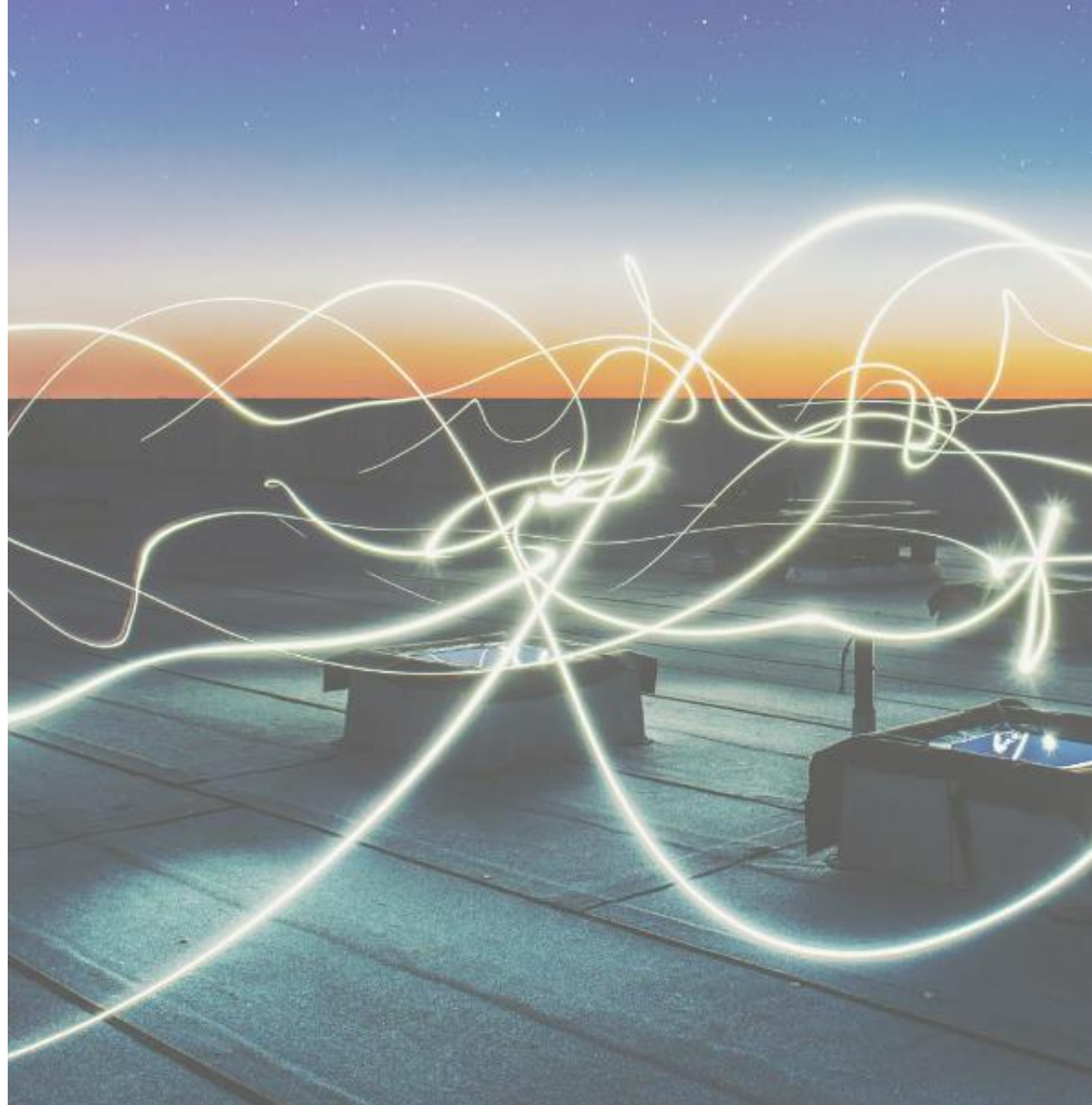
December 2019

Forward-Looking Statements

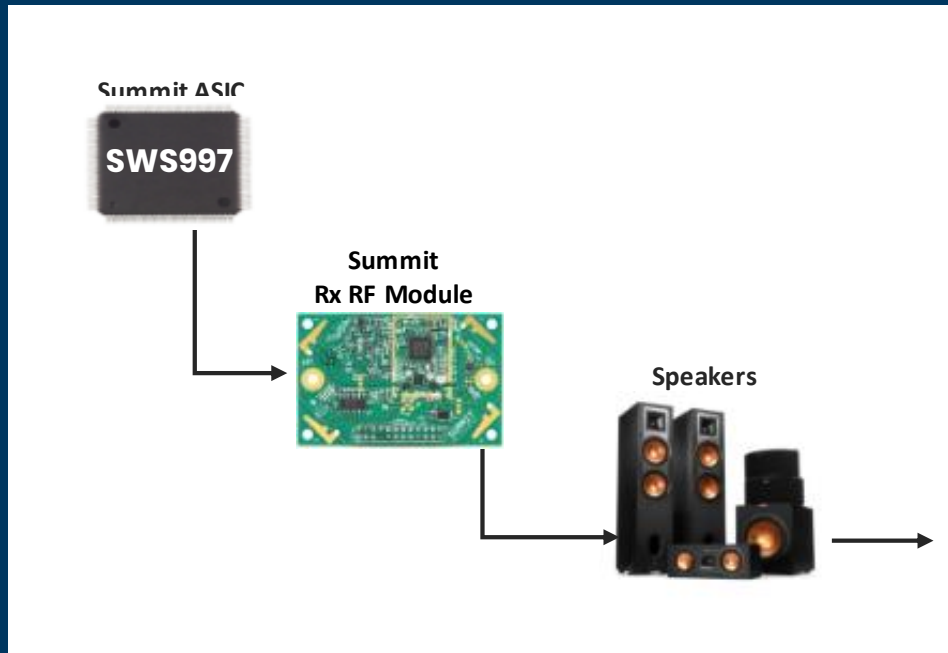
This presentation contains forward-looking statements within the meaning of Section 27A of the Securities Act of 1933, as amended, and Section 21E of the Securities Exchange Act of 1934, as amended. Readers are cautioned not to place undue reliance on these forward-looking statements. Actual results may differ materially from those indicated by these forward-looking statements as a result of risks and uncertainties impacting Summit Wireless' business, including the ability to predict the timing of design wins entering production and the potential future revenue associated with design wins; rate of growth; the ability to predict customer demand for existing and future products and to secure adequate manufacturing capacity; consumer demand conditions affecting customers' end markets; the ability to hire, retain and motivate employees; the effects of competition, including price competition; technological, regulatory and legal developments; developments in the economy and financial markets and other risks detailed from time to time in Summit Wireless' filings with the Securities and Exchange Commission.



WiSA patented technology powers top consumer electronics brands to deliver wireless immersive sound



Delivering the Wireless Immersive Sound Experience



Technology creates
Picture Perfect Sound



Interoperability standard creates
Consumer Choice

Audio is Separating From Devices

Multi-channel content needs a consumer easy solution



TVs



PCs



Smart Phones

Sound is Key to Optimizing the Experience of...



SPORTS



TV SHOWS



CONCERTS



MOVIES

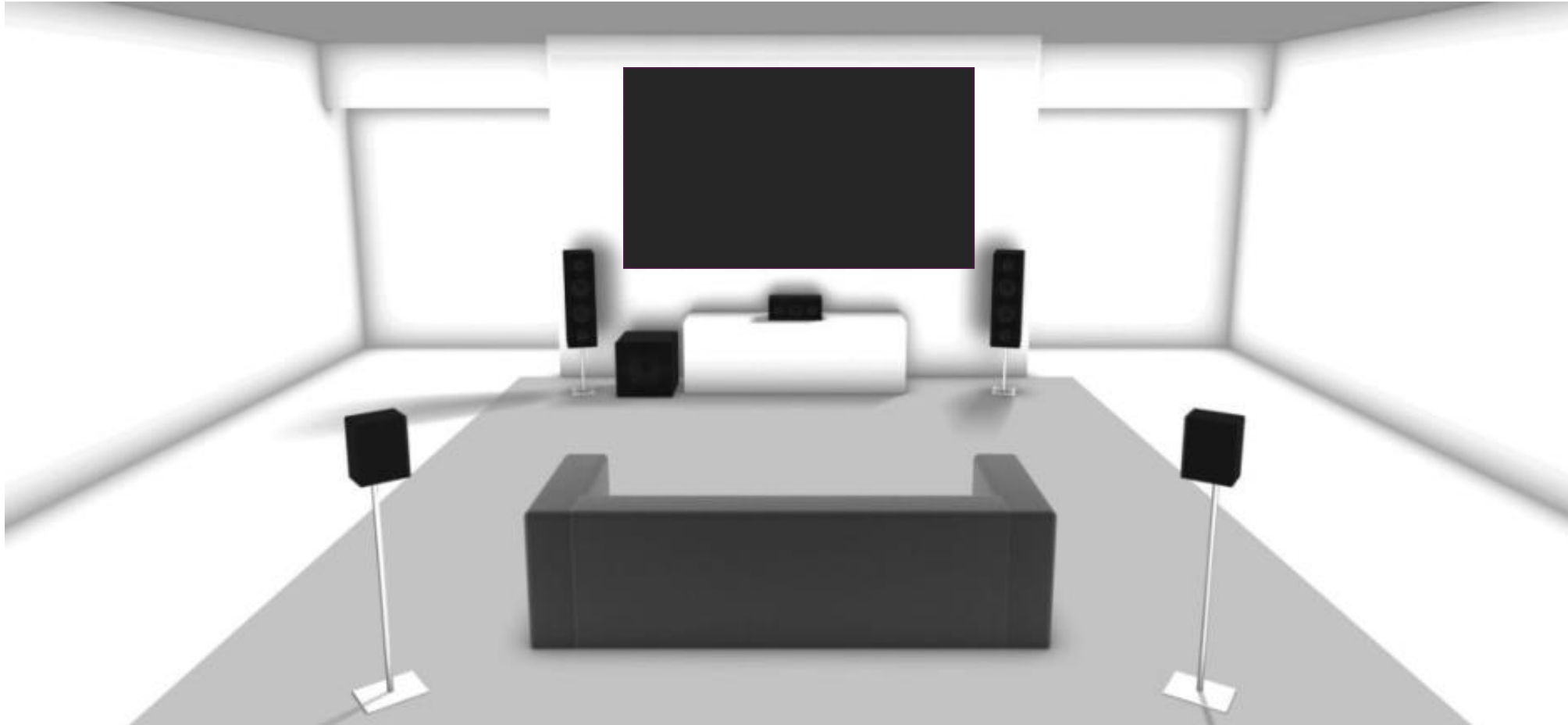


**GAMING
ESPORTS**

ALL COMING INTO THE HOME IN 5.1 OR GREATER

Paradigm Shift: Consumers Seek Simplicity

Complete Set-Up in Less than 10 Minutes



No Complex Receivers



No Difficult Installations



No Speaker Wires

Wireless Interoperability Standard

Marketing and Design



Members by Category

TV PARTNERS



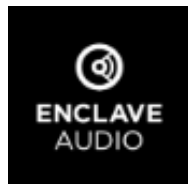
Bang & Olufsen



TRANSMIT + SPEAKER PARTNERS



Bang & Olufsen



SAVANT



DYNAUDIO

ARTISON



OTHER KEY PARTNERS

Klipsch®



Hansong

System Audio
A/S



Technical Cornerstones: Latency, Speaker Synchronization, Plug and Go



Latency

- Average Human sees: > 50ms
- Dolby wants: < 20ms
- Audiophiles want: < 15ms
- Gamers want: < 12ms

WiSA delivers: 5.2ms

Speaker Sync

WiSA delivers: 1 μ s



Plug and Go Set-up

Eliminating Adoption Costs

Traditional

TV



HDMI
WIFI
Bluetooth
Dolby

A/V Receiver



HDMI
WIFI
Bluetooth
Dolby

Installation



Installation
Cost/Time

Cost to consumer: \$1,500+

WiSA



WiSA Hub/Soundbar



\$300-\$800

WiSA "Ready"



WiSA USB Transmitter or
WiSA Xbox Transmitter



\$75-\$150

WiSA Embedded IP



\$1

WiSA Ready Simplifies Creating Immersive Sound Systems



TVs



Gaming Systems



PCs



Easily connect
to any



CERTIFIED

Easy Set Up Process Through TV User Interface

1 TV recognizes USB WiSA "Ready" Transmitter

2 WiSA loudspeakers found and assigned or reassigned

3 WiSA Logo every time consumer changes volume



Wireless loudspeakers connected in 2-3 seconds



LG Premium TVs and WiSA

LG OLED and NanoCell TVs connect seamlessly with WiSA-certified wireless speakers, from Klipsch®, so you can enjoy hi-quality, immersive surround sound in minutes.

[Learn More](#) ↻

[Buy Transmitter Dongle](#) ↻

*Transmitter dongle required and sold separately.

Fall Promotion in 300 Best Buy Storefronts

+   **Klipsch** **Axiim**





Forthcoming Launches



Citation



HK Surround



Tana



Monaco



Legend 5



Legend 40



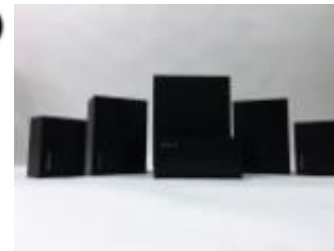
Legend 60



ENCLAVE AUDIO



CineHome Pro
CineHome II
CineHome Transmitter

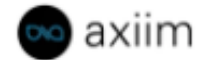


CineHome Premier

SAVANT



Sound Bar and Sub
(image not available)



Link HD Wireless

Additional products in development

Product Rollout: Currently in Market

Transmitting Devices

- LG WiSA Ready OLED and Nanocell TVs
- Primare Preamp
- Primare Network Center
- Axiim Q 4K media center
- LG Innotek USB WiSA Transmitter
- Axiim LINK USB WiSA Transmitter
- Harman Citation Soundbar
- Harman HK Streaming Box
- Enclave Audio HDMI Dongle
- Savant Home Control Soundbar
- Almando Multiplay Surround Switch

Application

- USB WiSA Transmitter required
- (All HDMI)
- (All HDMI)
- (All HDMI)
- (WiSA Ready devices)
- (WiSA Ready plus Xbox, PC/MAC)
- (All HDMI)
- (All HDMI)
- (All HDMI)
- (All HDMI)
- (All HDMI)

Product Rollout: Currently in Market

Speakers

- Axiim XM speakers
- Axiim WM speakers
- Axiim LX speaker bundles for Xbox
- Bang and Olufsen speakers
- Enclave Audio Cinehome
- Enclave audio Cinehome II
- Enclave Audio Cinehome Pro
- Harman Citation speakers
- Harman HK Surround speakers
- Klipsch Reference Wireless
- System Audio 5 Series
- System Audio 40 Series
- System Audio 60 Series
- Savant Smart Audio family of soundbar and speakers
- EC Living speaker family
- Platin Audio speaker family
- Golden Ears speaker family

New Products Reach Lower Prices for Higher Sales Velocity

Brand	Configuration w/Tx	MSRP
● Bang and Olufsen	5.1	\$25,000
● Harman Citation speakers	5.1 or SB 5.1	\$ 5,500
● Klipsch Reference Premiere	5.1	\$ 5,000
● Klipsch Reference Wireless	5.1	\$ 2,800
● Savant Smart Audio family of speakers	SB 5.1	\$ 2,600
● Harman HK Surround speakers	5.1	\$ 2,500
● Axiim WM speaker bundle	5.1	\$ 2,481
● Klipsch Reference Wireless	3.1	\$ 2,100
● Enclave Audio CineHome Pro	5.1	\$ 1,495
● Enclave Audio CineHome II	5.1	\$ 999
● Axiim LX speakers for Xbox	5.1	\$ 899
● Platin Audio speaker family	5.1	\$ 899
● Enclave Audio CineHome	5.1	\$ 799

Brands are integrating WiSA into higher velocity price points and bringing solutions to market in price points previously occupied by lesser performing systems

Sonos 5.1 (soundbar, sub, surrounds)

Bose Soundbar 700 (no sub, no surrounds)

SB = Soundbar

2020 WiSA Target Devices

Category of Product	Worldwide Shipments*	Attach Rate	Total Available Market (TAM)
TVs with HDMI ARC	200 Million	5%	\$ 600 Million
WiSA Ready TVs	20 Million	5%	\$ 60 Million
Soundbar Conversion to Immersive	35 Million	5%	\$ 100 Million
<i>*Worldwide shipments, 5.1 system design</i>			

WiSA: What people are saying...

"WiSA is on the verge of changing the way we buy, install, and use our home theater gear."

-Digital Trends on October 10, 2019

"2020 is shaping up to be the year of the wireless home theater thanks to WiSA — a wireless home theater technology — and companies like [Enclave Audio](#) which is using WiSA to create home theater systems."

-Digital Trends on October 18, 2019



DIGITAL TRENDS

Enclave Audio's CineHome Pro is the first THX-certified wireless speaker system

By Simon Cohen November 16, 2019 8:57AM PST



First 'Tuned by THX' home theater speakers need no A/V receivers — or wires

By Simon Cohen November 14, 2019 4:00AM PST



What is WiSA? The wireless home theater technology fully explained

By Simon Cohen October 10, 2019 1:45PM PST



Home / Speakers

NEWS
Enclave Audio announces the first THX Certified and WiSA Certified wireless home theater speaker system

The \$1,500 CineHome Pro system marks the first WiSA-enabled 5.1 speaker set to be THX-certified.



Enclave Cinehome II brings wireless audio to home cinema

The Enclave CineHome WiSA systems bring wireless 5.1 surround sound to your living room with prices starting at \$1,000.



Enter the Soundbar Killer: Enclave Audio Introduces New High-Definition Wireless Audio Speaker Solutions

Enclave delivers the world's first THX Certified and WiSA Certified home theater system for the ultimate 5.1 surround sound experience



Enclave's WiSA speakers add THX certified wireless sound to LG's new OLED TVs

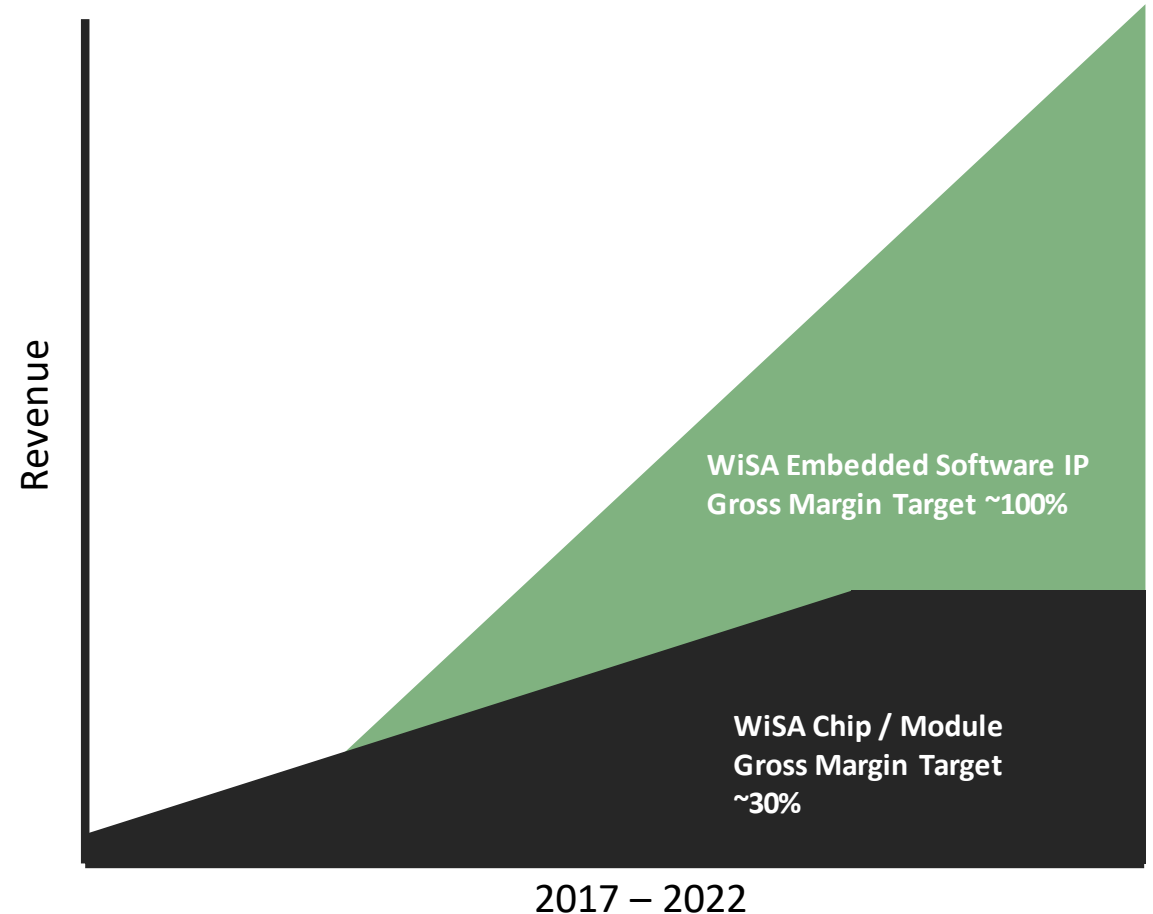
They'll connect via WiSA to LG's 2019 OLED TVs

By Jon Porter | @JonPorter | Nov 18, 2019, 9:00am EST

Immersive Sound Expands to All Smart Devices

Long Term Growth Driver

- Developing licensable IP for smart devices:
 - 200M + Smart TVs
 - 1B+ Smart Phones
 - 200M Tablets
 - 60M Gaming PCs and Consoles
 - Smart Refrigerators
- Prototype demonstrated at CES19 to over 10 tier-one consumer electronics brands



Near-Term Milestones

- **Broadening market presence with speaker brands launching their first WiSA products**
- **Expanding available market with second WiSA Ready TV Brand**
 - 8K video support
 - With and without internal speakers in the TV
- **Integrating Atmos elevation speaker types**
- **Expanding retail footprint beyond 1,000 store fronts**

Scaling to Critical Mass

New products delivering a broader range of solutions:

- USB, HDMI; dongles, hubs, AV Receivers; TVs, game consoles, PCs

Tier 1 Brands investing heavy capital resources in:

- New products
- Promoting WiSA

New, mass market price points expand the WiSA market beyond premium audio:

- Global footprint of distribution of WiSA enabled products:
- North American, Europe, Asia all have multiple brands
- US passing 1,000 store fronts and expanding rapidly

Summit Wireless Technologies Investment Rationale

<p>Paradigm Shifts Create Opportunity</p>	
<p>Global Interoperability Standard</p>	
<p>IP Portfolio + TM</p>	<p>11 patents issued/pending + WiSA™</p>
<p>Expanding Market = Long-term Growth</p>	<p>Expanding ODM design/development pipeline Increasing WiSA membership Launching WiSA Ready + WiSA Embedded platforms Increasing multi-brand cross-category marketing accelerating consumer awareness/demand</p>

CES 2020 Investor Happy Hour

Join us at our **Annual CES Investor Happy Hour**

on January 7th from 6:00pm to 8:00pm PT

at the Venetian Suite 29-234